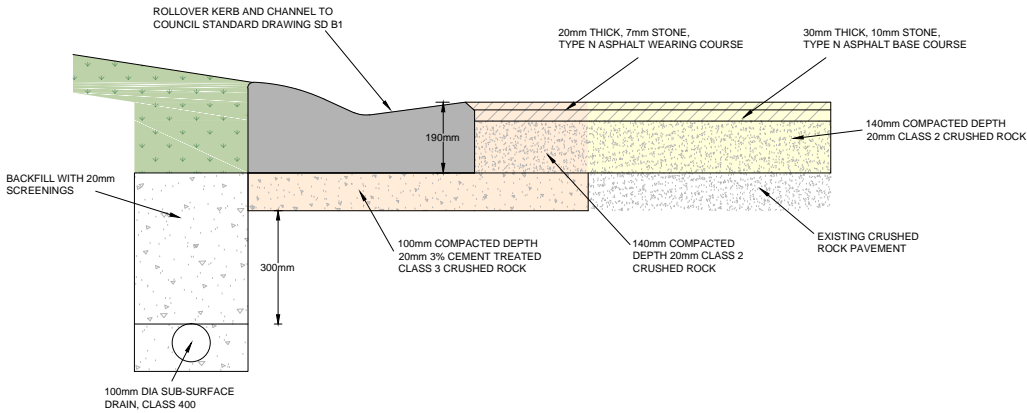


NOTES

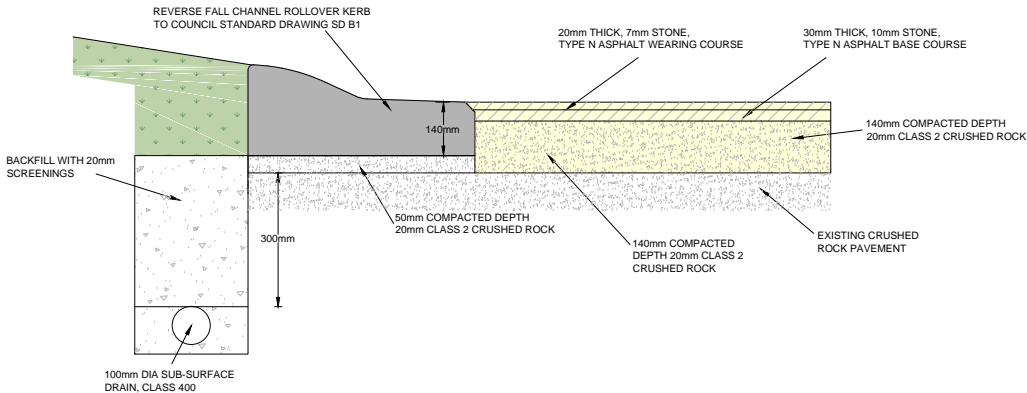
- GENERAL**
- 1. THE CONTRACTOR IS TO VERIFY THE LOCATION AND DEPTH OF ALL UTILITY SERVICES PRIOR TO CARRYING OUT WORKS BY TELEPHONING 1100 'DIAL BEFORE YOU DIG'.
 - 2. DISCREPANCIES BETWEEN PLANS AND EXISTING CONDITIONS ARE TO BE REPORTED IMMEDIATELY TO THE COUNCIL'S SUPERVISING ENGINEER.
 - 3. ALL SURPLUS EXCAVATED MATERIAL REMAINS THE PROPERTY OF THE CONTRACTOR UNLESS SPECIFIED OTHERWISE OR ADVISED BY THE COUNCIL'S SUPERVISING ENGINEER.
 - 4. "REMOVE" SHALL MEAN REMOVE OFF-SITE AND DISPOSE OF AT AN APPROVED DISPOSAL SITE AT THE CONTRACTOR'S EXPENSE, UNLESS SPECIFIED OTHERWISE.
 - 5. ON COMPLETION OF CONSTRUCTION ALL WORK AREA ARE TO BE CLEANED UP & REINSTATED TO THE SATISFACTION OF THE COUNCIL'S SUPERVISING ENGINEER.
- PAVEMENT**
- 6. ROAD CROSSFALL TO BE 1 in 36 FALLING TOWARDS THE TABLE DRAIN OR KERB AND CHANNEL UNLESS SPECIFIED OTHERWISE.
 - 7. AT NEW FILL AREAS THE TOPSOIL SHALL BE STRIPPED AND FILLING MATERIAL PLACED IN 150mm THICK LAYER AND COMPACTED TO 95% A.A.S.H.O. COMPACTION TEST, THE TOPSOIL IS THEN RE-SPREAD ON THE BATTER AREAS.
 - 8. NEW CONCRETE FOOTPATH PAVING TO BE 32 MPa STRENGTH.
 - 9. TACTILE GROUND SURFACE INDICATOR (TSGI) PAVERS ARE TO BE 300mm x 300mm x 40mm PRE-CAST CONCRETE PAVERS AND SHALL HAVE A MINIMUM LUMINANCE CONTRAST OF 30% COMPARED TO THE AMOUNT OF LIGHT REFLECTED FROM THE ADJACENT SURFACE.
- ROADSIDE**
- 10. EXISTING DRIVEWAY ENTRANCES TO BE REINSTATED AND SEALED FOR 1.0m FROM EDGE OF SEAL WITH 50mm COMPACTED DEPTH 10mm TYPE N ASPHALT ON A BASE OF 100mm COMPACTED DEPTH CLASS 2 FINE CRUSHED ROCK.
 - 11. EXISTING DRIVEWAYS ARE TO BE REINSTATED FROM BACK OF KERB OR EDGE OF SEAL AT A MAXIMUM GRADE OF 1 in 8 FOR 2.0m THEN 1 in 4 THEREAFTER WITH A TRANSITION OF 1 in 6 FOR 2.0m IS PREFERRED WHERE POSSIBLE AS PER:
 - 11.a. GRAVEL DRIVEWAY WITH 50mm COMPACTED DEPTH OF 3% CEMENT TREATED CRUSHED ROCK UNLESS SPECIFIED OTHERWISE.
 - 11.b. ASPHALT DRIVEWAYS WITH 50mm COMPACTED DEPTH 10mm NOMINAL SIZE ASPHALT ON A BASE OF 100mm COMPACTED DEPTH CLASS 2 FINE CRUSHED ROCK.
 - 11.c. CONCRETE DRIVEWAYS WITH 150mm DEPTH CONCRETE PAVING ON A BASE OF 50mm COMPACTED DEPTH CLASS 2 FINE CRUSHED ROCK.
 - 11.d. BRICK PAVEMENT DRIVEWAYS WITH SUITABLE HEAVY DUTY BRICK PAVERS ON 30mm OF BEDDING SAND ON A BASE OF 100mm COMPACTED DEPTH CLASS 2 FINE CRUSHED ROCK.
 - 12. TABLE DRAIN TO BE CLEANED, REDEFINED OR DEFINED AS NECESSARY ALONG THE HIGH SIDE OF THE ROADWAY, REFER TO TYPE OF SECTION FOR TABLE DRAIN PROFILE, MINIMUM DEPTH 300mm.

- DRAINAGE**
- 13. ALL DRAINAGE PIPES TO BE CLASS 2 RUBBER RING JOINTED SPIGOT AND SOCKET UNLESS SPECIFIED OTHERWISE.
 - 14. ALL PROPERTY STORM WATER OUTLETS WITHIN 3.0m OF THE NEW DRAIN OR KERB ARE TO BE CONNECTED TO UNDERGROUND DRAINAGE PIPES WHERE AVAILABLE, OR BACK OF KERB WHERE UNDERGROUND DRAINAGE PIPES ARE NOT AVAILABLE.
 - 15. DRAINAGE PITS GREATER THAN 1.0m IN DEPTH TO BE PROVIDED WITH STEP IRONS AT 300mm CENTRES VERTICALLY.
 - 16. A.G. DRAIN PLACED BEHIND KERB AND CHANNEL AS SHOWN ON PLAN IF WITHIN 3.0m OF ANY TREE EXCAVATION TO BE HAND DUG OR BORED TO MINIMISE ROOT DAMAGE OF TREE.
- VEGETATION**
- 17. TREE PROTECTION ZONES (TPZ) HAVE BEEN SHOWN FOR ALL TREES LOCATED CLOSE TO THE WORKS AREA. WORKS AND ANY STOCKPILES OF CONSTRUCTION EQUIPMENT AND MATERIAL ARE TO BE CONTAINED OUTSIDE THE TPZ UNLESS SPECIFICALLY APPROVED BY THIS PLAN. PRIOR APPROVAL MUST BE SOUGHT FOR ANY WORKS NOT SPECIFIED AND APPROVED BY THIS PLAN THAT ARE TO BE CONDUCTED WITHIN THE TPZ OF ANY TREE.
 - 18. ONLY TREES SHOWN TO BE REMOVED ON THIS PLAN CAN BE REMOVED. ANY DAMAGE TO THE BARK, BRANCHES, TRUNKS OR ROOTS OF OTHER TREES SHOULD BE IMMEDIATELY REPORTED TO COUNCIL'S CONSTRUCTION SURVEILLANCE OFFICER BEFORE ANY WORKS CONTINUE AROUND THE SUBJECT VEGETATION.
- ANCILLARY**
- 19. ALL EXISTING SIGNS AND POSTS REMAIN THE PROPERTY OF THE COUNCIL.



ROLLOVER KERB AND CHANNEL DETAIL

GENERALLY IN ACCORDANCE WITH YARRA RANGES SHIRE COUNCIL DRAWING SD / D5
NOT TO SCALE



REVERSE FALL CHANNEL ROLLOVER KERB DETAIL

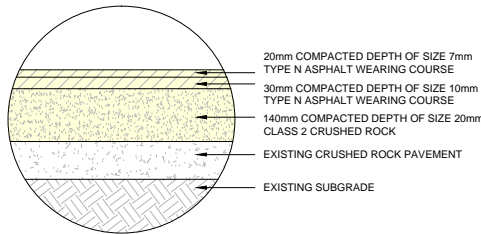
GENERALLY IN ACCORDANCE WITH YARRA RANGES SHIRE COUNCIL DRAWING SD / D5
NOT TO SCALE



WARNING
BEWARE OF UNDERGROUND SERVICES
THE LOCATION OF EXISTING UNDERGROUND SERVICES ARE APPROXIMATE ONLY AND THEIR EXACT POSITION SHOULD BE PROVEN ON SITE. NO GUARANTEE IS GIVEN THAT ALL EXISTING SERVICES ARE SHOWN.

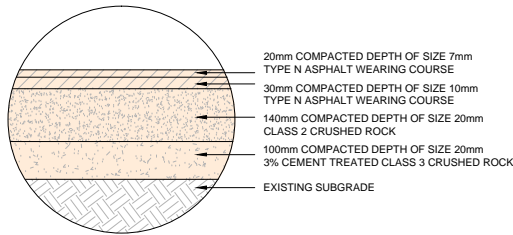
DRAWING INDEX

SHEET No.	TITLE
1	TITLE SHEET - LOCALITY PLAN, GENERAL NOTES & DRAWING INDEX
2	OVERALL PLAN
3	TYPICAL SECTIONS A-A, B-B, C-C, D-D & E-E
4	GENERAL LAYOUT PLAN



OVERLAY EXISTING PAVEMENT DETAIL

NOT TO SCALE



FULL DEPTH PAVEMENT DETAIL

NOT TO SCALE

VER	DESCRIPTION	DATE
01	FUNCTIONAL DESIGN - ISSUED FOR REVIEW	25-10-2021
00	FUNCTIONAL DESIGN - ISSUED FOR REVIEW	30-04-2021

CONSULTANT ENGINEER

PROCIVIL
CONSULTING ENGINEERING

Specialist Civil Engineering Design Consultants

Commitment | Communication | Collaboration

PROCIVIL CONSULTING PTY LTD
ABN 51 759 386 092
SUITE 9, 12 MAROONDHAW HWY, RINGWOOD VIC 3114
PO BOX 164, RINGWOOD VIC 3114
P: (03) 8644 6834
E: info@procivil.com.au
www.procivil.com.au

CIVIL ENGINEERING DESIGN
KURT CHAMBERLAIN

TECHNICAL PEER REVIEW
LUKE WHITFIELD

REGISTERED & CHARTERED PROFESSIONAL ENGINEER
CHRIS PROCTOR



ORIGINAL SCALE & SHEET SIZE
AS SHOWN @ A1

HEIGHT DATUM
AHD

COORDINATE DATUM
MGA 94 ZONE 55

SURVEY DATE
16-09-2020

AERIAL IMAGE DATE
23-12-2018

LOCAL GOVERNMENT AREA
SHIRE OF YARRA RANGES

CLIENT

CLIENT PROJECT MANAGER / CONTACT
PETROS INDOS | GRANT MCCARTHY

FUNCTIONAL DESIGN

ROAD & DRAINAGE RECONSTRUCTION WORKS
LAWRENCE COURT, HEALESVILLE

TITLE SHEET - LOCALITY PLAN, GENERAL NOTES & DRAWING INDEX

PROJECT No.
PC20008C

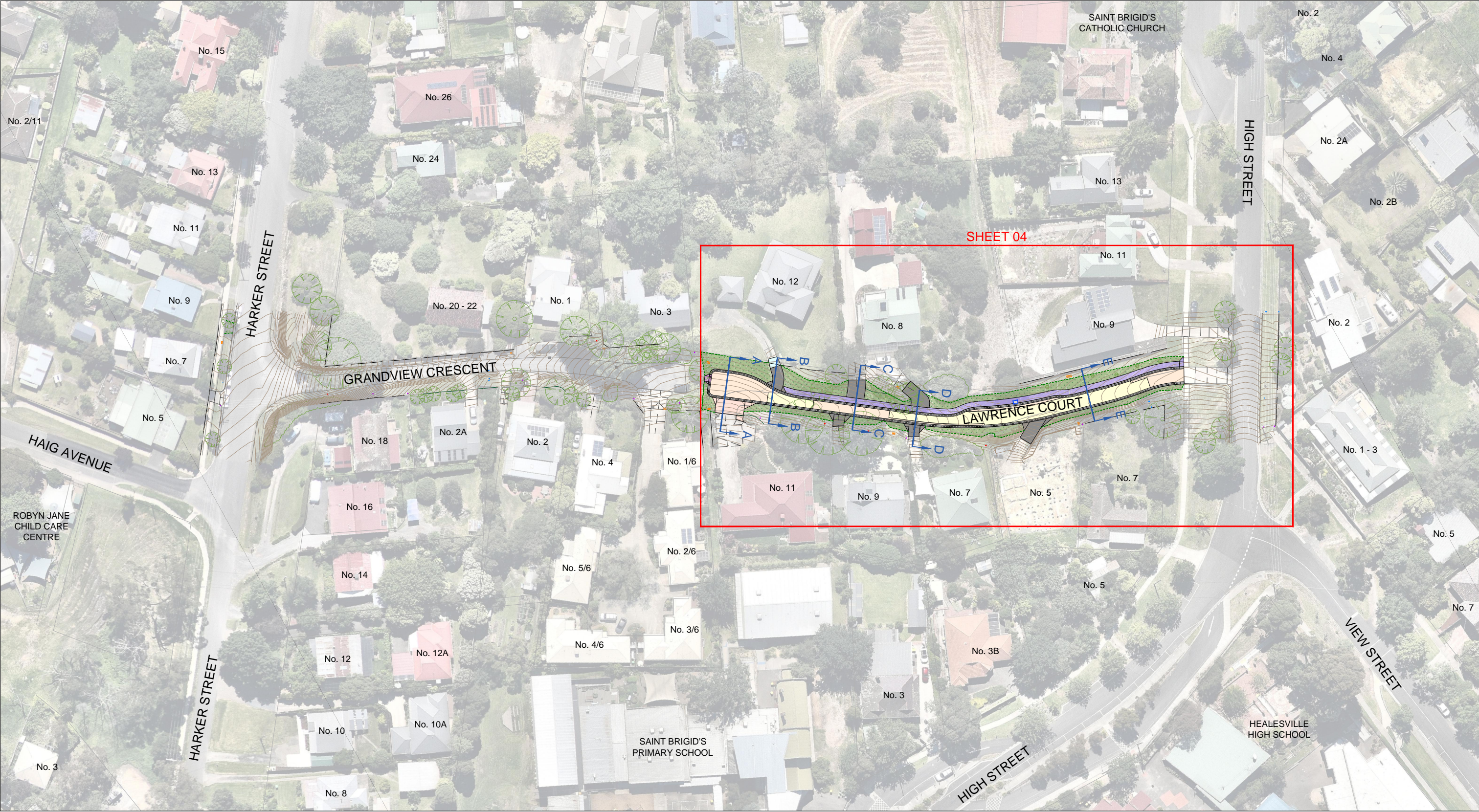
SHEET No.
01 OF 04

VERSION
01

DWG No.
PC20008C - 01 - 01



WARNING
BEWARE OF UNDERGROUND SERVICES.
THE LOCATION OF EXISTING UNDERGROUND SERVICES ARE APPROXIMATE
ONLY AND THEIR EXACT POSITION SHOULD BE PROVEN ON SITE. NO
GUARANTEE IS GIVEN THAT ALL EXISTING SERVICES ARE SHOWN.



OVERALL PLAN

10 5 0 10 20 1:500 @ A1
1:1,000 @ A3

01	FUNCTIONAL DESIGN - ISSUED FOR REVIEW	25-10-2021
00	FUNCTIONAL DESIGN - ISSUED FOR REVIEW	30-04-2021
VER	DESCRIPTION	DATE

CONSULTANT ENGINEER

PROCIVIL
CONSULTING ENGINEERING

Specialist Civil Engineering Design Consultants

Commitment | Communication | Collaboration

PROCIVIL CONSULTING PTY LTD
ABN 51 759 386 092
SUITE 9, 12 MAROONDHA HWY, RINGWOOD VIC 31134
PO BOX 164, RINGWOOD VIC 31134
P: (03) 8644 6834
E: info@procivil.com.au
www.procivil.com.au

CIVIL ENGINEERING DESIGN
KURT CHAMBERLAIN
REGISTERED & CHARTERED PROFESSIONAL ENGINEER
CHRIS PROCTOR

TECHNICAL PEER REVIEW
LUKE WHITFIELD

ORIENTATION

OR AS SHOWN

ORIGINAL SCALE & SHEET SIZE
AS SHOWN @ A1

HEIGHT DATUM
AHD

COORDINATE DATUM
MGA 94 ZONE 55

SURVEY DATE
16-09-2020

AERIAL IMAGE DATE
23-12-2018

LOCAL GOVERNMENT AREA
SHIRE OF YARRA RANGES

CLIENT

CLIENT PROJECT MANAGER / CONTACT
PETROS INDOS | GRANT MCCARTHY

FUNCTIONAL DESIGN

ROAD & DRAINAGE RECONSTRUCTION WORKS

LAWRENCE COURT, HEALESVILLE

OVERALL PLAN

PROJECT No.
PC20008C

SHEET No.
02 OF 04

VERSION
01

DWG No.
PC20008C - 02 - 01

--	--	--	--	--	--	--	--	--	--	--	--	--	--	--	--	--	--	--	--	--	--	--	--	--	--	--	--	--	--	--	--	--	--	--	--	--	--	--	--	--	--	--	--	--	--	--	--	--	--	--	--	--	--	--	--	--	--	--	--	--	--	--	--	--	--	--	--	--	--	--	--	--	--	--	--	--	--	--	--	--	--	--	--	--	--	--	--	--	--	--	--	--	--	--	--	--	--	--	--	--	--	--	--	--	--	--	--	--	--	--	--	--	--	--	--	--	--	--	--	--	--	--	--	--	--	--	--	--	--	--	--	--	--	--	--	--	--	--	--	--	--	--	--	--	--	--	--	--	--	--	--	--	--	--	--	--	--	--	--	--	--	--	--	--	--	--	--	--	--	--	--	--	--	--	--	--	--	--	--	--	--	--	--	--	--	--	--	--	--	--	--	--	--	--	--	--	--	--	--	--	--	--	--	--	--	--	--	--	--	--	--	--	--	--	--	--	--	--	--	--	--	--	--	--	--	--	--	--	--	--	--	--	--	--	--	--	--	--	--	--	--	--	--	--	--	--	--	--	--	--	--	--	--	--	--	--	--	--	--	--	--	--	--	--	--	--	--	--	--	--	--	--	--	--	--	--	--	--	--	--	--	--	--	--	--	--	--	--	--	--	--	--	--	--	--	--	--	--	--	--	--	--	--	--	--	--	--	--	--	--	--	--	--	--	--	--	--	--	--	--	--	--	--	--	--	--	--	--	--	--	--	--	--	--	--	--	--	--	--	--	--	--	--	--	--	--	--	--	--	--	--	--	--	--	--	--	--	--	--	--	--	--	--	--	--	--	--	--	--	--	--	--	--	--	--	--	--	--	--	--	--	--	--	--	--	--	--	--	--	--	--	--	--	--	--	--	--	--	--	--	--	--	--	--	--	--	--	--	--	--	--	--	--	--	--	--	--	--	--	--	--	--	--	--	--	--	--	--	--	--	--	--	--	--	--	--	--	--	--	--	--	--	--	--	--	--	--	--	--	--	--	--	--	--	--	--	--	--	--	--	--	--	--	--	--	--	--	--	--	--	--	--	--	--	--	--	--	--	--	--	--	--	--	--	--	--	--	--	--	--	--	--	--	--	--	--	--	--	--	--	--	--	--	--	--	--	--	--	--	--	--	--	--	--	--	--	--	--	--	--	--	--	--	--	--	--	--	--	--	--	--	--	--	--	--	--	--	--	--	--	--	--	--	--	--	--	--	--	--	--	--	--	--	--	--	--	--	--	--	--	--	--	--	--	--	--	--	--	--	--	--	--	--	--	--	--	--	--	--	--	--	--	--	--	--	--	--	--	--	--	--	--	--	--	--	--	--	--	--	--	--	--	--	--	--	--	--	--	--	--	--	--	--	--	--	--	--	--	--	--	--	--	--	--	--	--	--	--	--	--	--	--	--	--	--	--	--	--	--	--	--	--	--	--	--	--	--	--	--	--	--	--	--	--	--	--	--	--	--	--	--	--	--	--	--	--	--	--	--	--	--	--	--	--	--	--	--	--	--	--	--	--	--	--	--	--	--	--	--	--	--	--	--	--	--	--	--	--	--	--	--	--	--	--	--	--	--	--	--	--	--	--	--	--	--	--	--	--	--	--	--	--	--	--	--	--	--	--	--	--	--	--	--	--	--	--	--	--	--	--	--	--	--	--	--	--	--	--	--	--	--	--	--	--	--	--	--	--	--	--	--	--	--	--	--	--	--	--	--	--	--	--	--	--	--	--	--	--	--	--	--	--	--	--	--	--	--	--	--	--	--	--	--	--	--	--	--	--	--	--	--	--	--	--	--	--	--	--	--	--	--	--	--	--	--	--	--	--	--	--	--	--	--	--	--	--	--	--	--	--	--	--	--	--	--	--	--	--	--	--	--	--	--	--	--	--	--	--	--	--	--	--	--	--	--	--	--	--	--	--	--	--	--	--	--	--	--	--	--	--	--	--	--	--	--	--	--	--	--	--	--	--	--	--	--	--	--	--	--	--	--	--	--	--	--	--	--	--	--	--	--	--	--	--	--	--	--	--	--	--	--	--	--	--	--	--	--	--	--	--	--	--	--	--	--	--	--	--	--	--	--	--	--	--	--	--	--	--	--	--	--	--	--	--	--	--	--	--	--	--	--	--	--	--	--	--	--	--	--	--	--	--	--	--	--	--	--	--	--	--	--	--	--	--	--	--	--	--	--	--	--	--	--	--	--	--	--	--	--	--	--	--	--	--	--	--	--	--	--	--	--	--	--	--	--	--	--	--	--	--	--	--	--	--	--	--	--	--	--	--	--	--	--	--	--	--	--	--	--	--	--	--	--	--	--	--	--	--	--	--	--	--	--	--	--	--	--	--	--	--	--	--	--	--	--	--	--	--	--	--	--	--	--	--	--	--	--	--	--	--	--	--	--	--	--	--	--	--	--	--	--	--	--	--	--	--	--	--	--	--	--	--	--	--	--	--	--	--	--	--	--	--	--	--	--	--	--	--	--	--	--	--	--	--	--	--	--	--	--	--	--	--	--	--	--	--	--	--	--	--	--	--	--	--	--	--	--	--	--	--	--	--	--	--	--	--	--	--	--	--	--	--	--	--	--	--	--	--	--	--	--	--	--	--	--	--	--	--	--

LEGEND

- OVERLAY EXISTING PAVEMENT - 190mm THICK FLEXIBLE PAVEMENT IN ACCORDANCE WITH DETAIL ON SHEET 01

FULL DEPTH PAVEMENT - 290mm THICK FLEXIBLE PAVEMENT IN ACCORDANCE WITH DETAIL ON SHEET 01

200mm THICK COMMERCIAL CONCRETE VEHICLE CROSSING - CONSTRUCTED IN GENERAL ACCORDANCE WITH YARRA RANGES SHIRE COUNCIL STANDARD DRAWING SD / C2 & SD / C3

150mm THICK CONCRETE VEHICLE CROSSING - CONSTRUCTED IN GENERAL ACCORDANCE WITH YARRA RANGES SHIRE COUNCIL STANDARD DRAWING SD / C2

100mm MINIMUM THICKNESS CLASS 2 CRUSHED ROCK VEHICLE CROSSING - CONSTRUCTED IN GENERAL ACCORDANCE WITH YARRA RANGES SHIRE COUNCIL STANDARD DRAWING SD / C2
- 150mm THICK CONCRETE FOOTPATH - CONSTRUCTED IN GENERAL ACCORDANCE WITH YARRA RANGES SHIRE COUNCIL STANDARD DRAWING SD / B5

CONCRETE PRAM CROSSING - CONSTRUCTED IN GENERAL ACCORDANCE WITH YARRA RANGES SHIRE COUNCIL STANDARD DRAWING SD / B4

LAWN AREA TO BE REINSTATED WITH YARRA RANGES SHIRE COUNCIL APPROVED TOPSOIL AND SEED

PROPOSED PAVEMENT GRADE

NEW DRAINAGE PIT WITH PIT NUMBER AND PIPE

DIRECTION OF CHANNEL FLOW

SUBSURFACE DRAINAGE

NEW CONCRETE KERB AND CHANNEL IN ACCORDANCE WITH YARRA RANGES SHIRE COUNCIL STANDARD DRAWING SD / B1
- EXISTING DRAINAGE PIPE

PAVEMENT LINE MARKING

EXISTING WATER

EXISTING GAS

EXISTING SEWER

EXISTING TELECOMMUNICATIONS

EXISTING UNDERGROUND ELECTRICITY

EXISTING CONTOUR MAJOR (1.0m)

EXISTING CONTOUR MINOR (0.2m)

FINISHED SURFACE CONTOUR MAJOR (1.0m)

FINISHED SURFACE CONTOUR MINOR (0.2m)

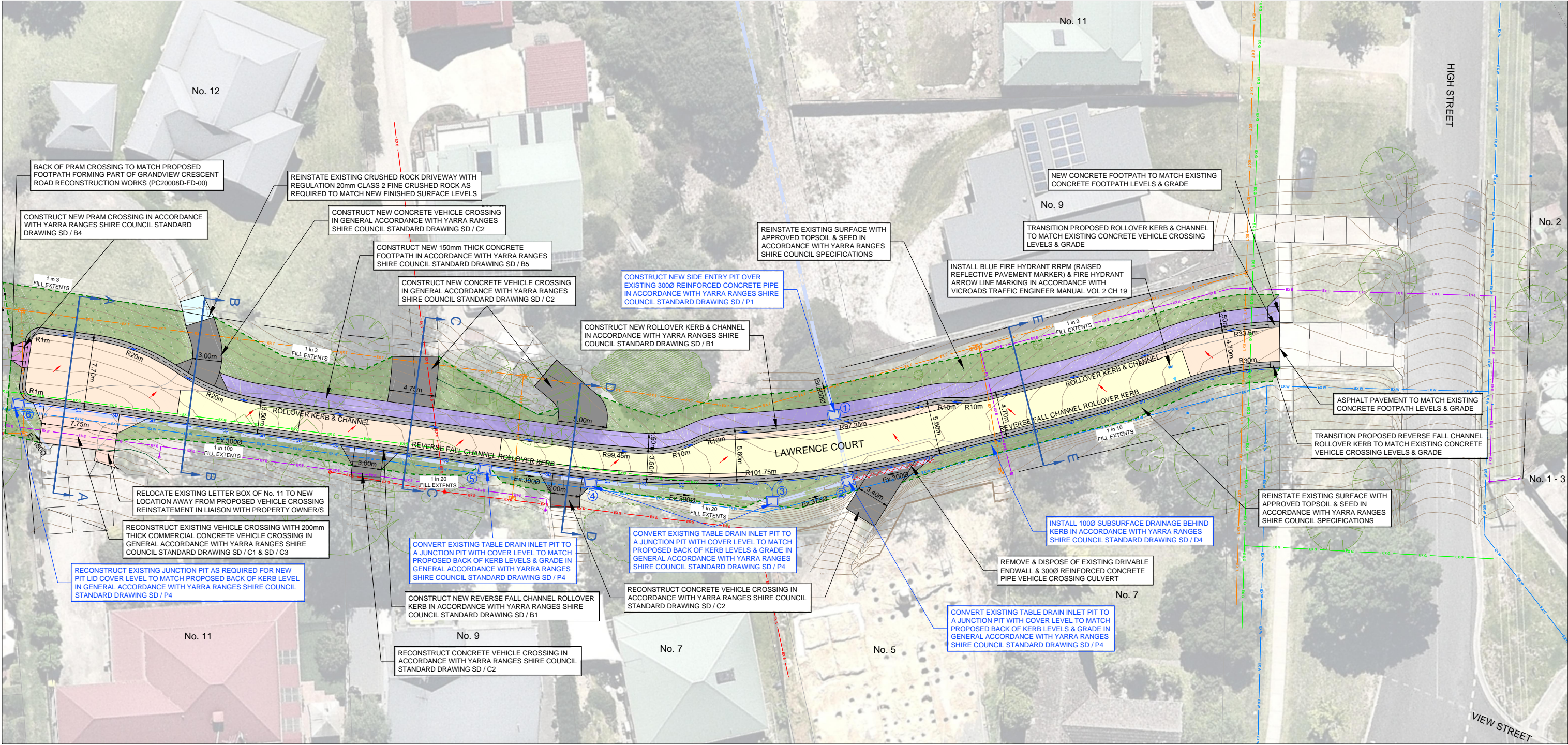
FILL BATTER EXTENT

CUT BATTER EXTENT

REMOVE EXISTING DRAINAGE PIPE






WARNING
BEWARE OF UNDERGROUND SERVICES.
THE LOCATION OF EXISTING UNDERGROUND SERVICES ARE APPROXIMATE ONLY AND THEIR EXACT POSITION SHOULD BE PROVEN ON SITE. NO GUARANTEE IS GIVEN THAT ALL EXISTING SERVICES ARE SHOWN.



GENERAL LAYOUT PLAN



		CONSULTANT ENGINEER		 PROCVIL CONSULTING ENGINEERING <i>Specialist Civil Engineering Design Consultants</i> Commitment Communication Collaboration	PROCVIL CONSULTING PTY LTD ABN 51 759 386 092 SUITE 9, 12 MAROONDHA HWY, RINGWOOD VIC 3134 PO BOX 164, RINGWOOD VIC 3134 P: (03) 8644 6834 E: info@procvil.com.au www.procvil.com.au	 OR AS SHOWN	ORIGINAL SCALE & SHEET SIZE AS SHOWN @ A1 HEIGHT DATUM AHD COORDINATE DATUM MGA 94 ZONE 55 SURVEY DATE 16-09-2020 AERIAL IMAGE DATE 23-12-2018		LOCAL GOVERNMENT AREA SHIRE OF YARRA RANGES CLIENT 		<div>FUNCTIONAL DESIGN</div> <div>ROAD & DRAINAGE RECONSTRUCTION WORKS</div> <div>LAWRENCE COURT, HEALESVILLE</div> <div>GENERAL LAYOUT PLAN</div>		PROJECT No. PC20008C SHEET No. 04 OF 04 VERSION 01 DWG No. PC20008C-04-01	
01	FUNCTIONAL DESIGN - ISSUED FOR REVIEW	25-10-2021	CIVIL ENGINEERING DESIGN KURT CHAMBERLAIN TECHNICAL PEER REVIEW LUKE WHITFIELD REGISTERED & CHARTERED PROFESSIONAL ENGINEER CHRIS PROCTOR				CLIENT PROJECT MANAGER / CONTACT PETROS INDOS GRANT MCCARTHY							
00	FUNCTIONAL DESIGN - ISSUED FOR REVIEW	30-04-2021												
VER	DESCRIPTION	DATE												