
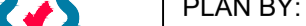




FOREST STREET, YARRA GLEN -
ROAD RECONSTRUCTION



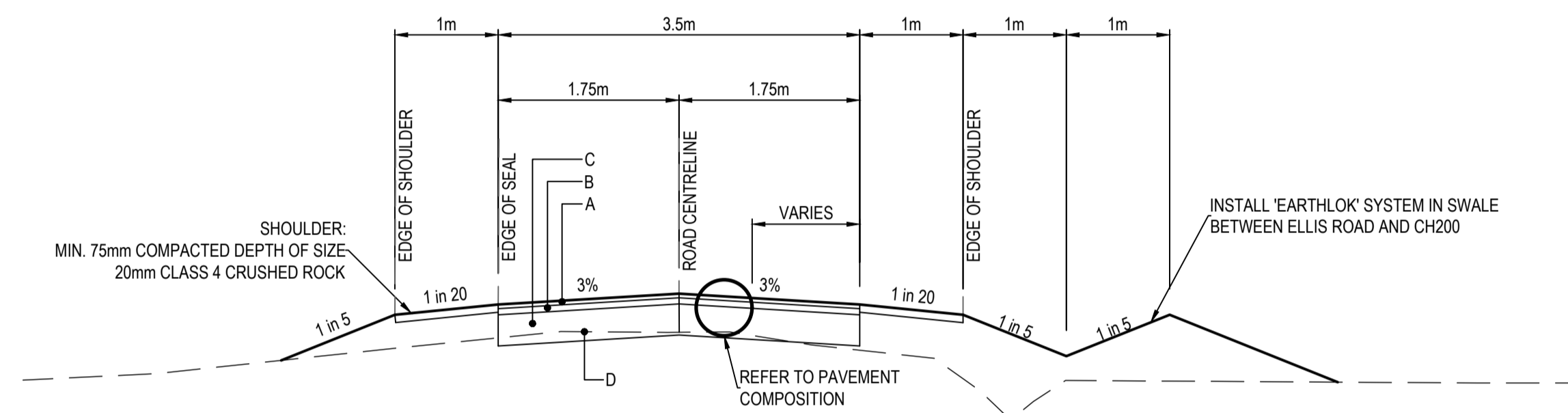
Drawing Index			
Sheet No.	Sheet Title	CAD File	Version No.
PI-C101	Overall Plan, Drawing Index and Notes	25200-C1 Public Issue.dwg	02
PI-C102	Details	25200-C1 Public Issue.dwg	02
PI-C201	Detail Plan - Sheet 1 of 8	25200-C2 Public Issue.dwg	02
PI-C202	Detail Plan - Sheet 2 of 8	25200-C2 Public Issue.dwg	02
PI-C203	Detail Plan - Sheet 3 of 8	25200-C2 Public Issue.dwg	02
PI-C204	Detail Plan - Sheet 4 of 8	25200-C2 Public Issue.dwg	02
PI-C205	Detail Plan - Sheet 5 of 8	25200-C2 Public Issue.dwg	02
PI-C206	Detail Plan - Sheet 6 of 8	25200-C2 Public Issue.dwg	02
PI-C207	Detail Plan - Sheet 7 of 8	25200-C2 Public Issue.dwg	02
PI-C208	Detail Plan - Sheet 8 of 8	25200-C2 Public Issue.dwg	02

FUNCTIONAL ISSUE
FOR REVIEW PURPOSES ONLY
NOT TO BE USED FOR CONSTRUCTION

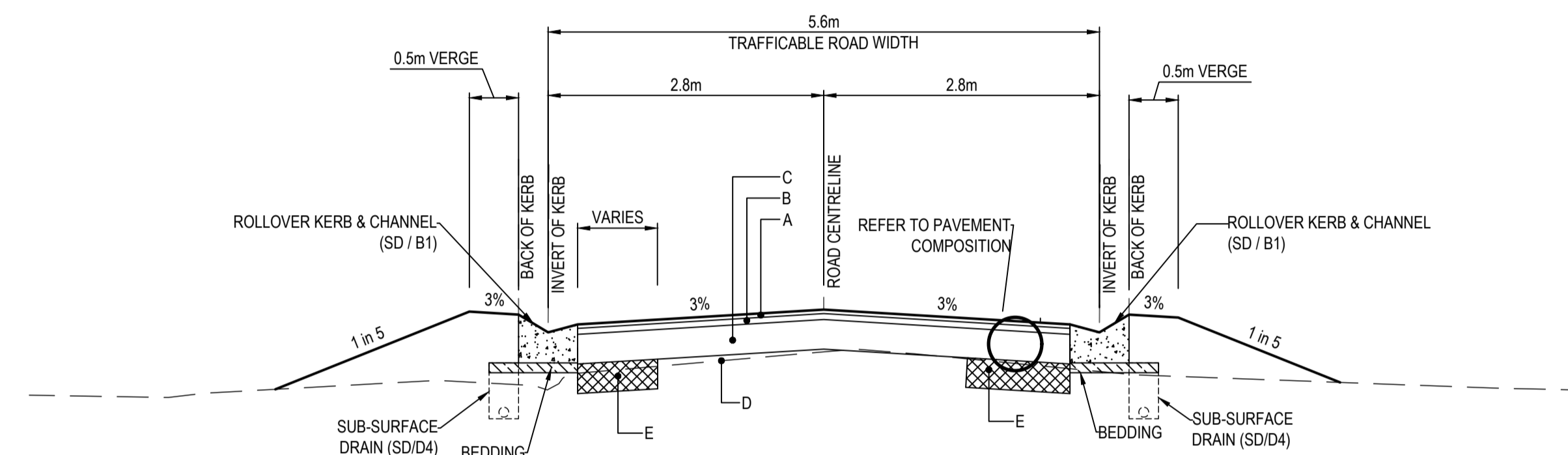
DATE	REVISION	AUTHORISED	VER.	PLAN STATUS:	SCALES:	YARRA RANGES COUNCIL																																		
18.08.20	PUBLIC ISSUE	AC	00	<div><div>WARNING</div><div>BEWARE - UNDERGROUND SERVICES</div><div>THE LOCATIONS OF EXISTING UNDERGROUND SERVICES ARE APPROXIMATE ONLY AND THEIR EXACT DEPTH AND LOCATION SHOULD BE VERIFIED AND PROVEN ON SITE BY THE APPROPRIATE SERVICE PROVIDERS PRIOR TO ANY SITE EXCAVATION. NO GUARANTEE IS GIVEN THAT ALL EXISTING SERVICES ARE SHOWN. CONTRACTOR TO TAKE PRECAUTIONS TO AVOID CONFLICTS</div></div> <div><div><div>DIAL BEFORE YOU DIG www.1100.com.au The Essential First Step</div></div><div><div><div>JCA Land Consultants</div><div>THE SUBDIVISION SPECIALISTS</div><div>Surveying - Engineering - Town Planning</div><div>Suite 9, 303 Marcondah Highway Ringwood Victoria, Australia 3134 Phone 03 9735 4888 Email jca@jcalc.com.au www.jcalc.com.au</div><div>JCA Ref: 25200</div></div><div><div><div>Quality Management System ISO 9001 trust-mark.com.au</div></div></div></div><div>AS SHOWN AT A1</div><div>SURVEY BY: JCA</div><div>PLAN BY: T.BAIL (JCA)</div><div>CHECKED BY: A.CHARNOCK (JCA)</div><div>PROJECT ENGINEER: G.McCARTHY</div><div>DATE: 24/06/2020</div><div>CAD FILE: 25200-C1 Public Issue.dwg</div><div>LEVEL DATUM A.H.D.</div><div>COORDINATE DATUM MGA</div><div></div><tr><td>21.09.20</td><td>ALIGNMENT AMENDED</td><td>AC</td><td>01</td><td colspan="5">ROAD RECONSTRUCTION FOREST STREET, YARRA GLEN</td><td>CHECKED BY XXXX</td><td>SHEET NO. PI-C101</td><td>VERSION 02</td></tr><tr><td>02.10.20</td><td>COUNCIL COMMENTS</td><td>AC</td><td>02</td><td colspan="5">OVERALL PLAN, SHEET INDEX, NOTES</td><td>APPROVED XXXX</td><td colspan="2">DRAWING NO. 2019-024</td></tr><tr><td></td><td></td><td></td><td></td><td colspan="5"></td><td>MANAGER - INFRASTRUCTURE SERVICES</td><td colspan="2"></td></tr></div>	21.09.20	ALIGNMENT AMENDED	AC	01	ROAD RECONSTRUCTION FOREST STREET, YARRA GLEN					CHECKED BY XXXX	SHEET NO. PI-C101	VERSION 02	02.10.20	COUNCIL COMMENTS	AC	02	OVERALL PLAN, SHEET INDEX, NOTES					APPROVED XXXX	DRAWING NO. 2019-024											MANAGER - INFRASTRUCTURE SERVICES		
21.09.20	ALIGNMENT AMENDED	AC	01		ROAD RECONSTRUCTION FOREST STREET, YARRA GLEN					CHECKED BY XXXX	SHEET NO. PI-C101	VERSION 02																												
02.10.20	COUNCIL COMMENTS	AC	02		OVERALL PLAN, SHEET INDEX, NOTES					APPROVED XXXX	DRAWING NO. 2019-024																													
										MANAGER - INFRASTRUCTURE SERVICES																														

FLEXIBLE PAVEMENT COMPOSITION			
PAVEMENT LAYER		LAYER THICKNESS (mm)	MATERIAL
A	ASPHALT WEARING COURSE	20	20mm COMPACTED DEPTH OF 7mm NOMINAL SIZE TYPE 'N' ASPHALT
B	ASPHALT BASE COURSE	30	30mm COMPACTED DEPTH OF 10mm NOMINAL SIZE TYPE 'N' ASPHALT
C	BASE	150	150mm COMPACTED DEPTH OF 20mm NOMINAL SIZE CLASS 2 FCR
D	SUBBASE COURSE	VARIES	EXISTING MATERIAL AS FOUND, SHAPED SPREAD AND COMPACTED, WITH 20mm CLASS 2 FCR REGULATION AS REQUIRED
E	PAVEMENT WIDENING SUBBASE (REFER PLAN FOR EXTENT)	150	150mm COMPACTED DEPTH OF 3% CEMENT TREATED CRUSHED ROCK

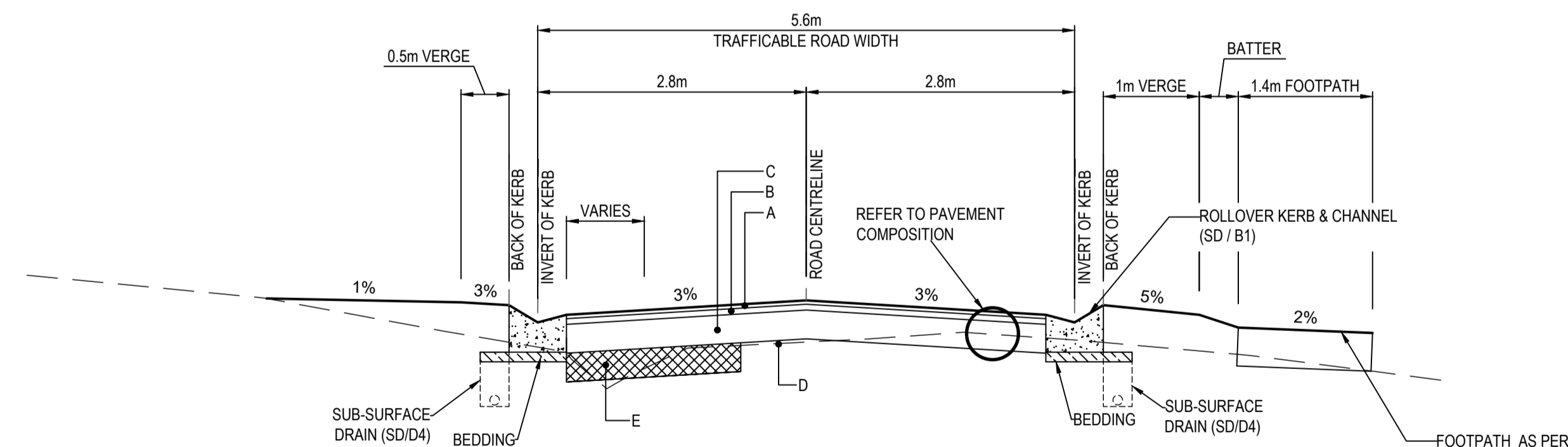
PAVEMENT COMPOSITION PROVIDED BY COUNCIL



TYPICAL CROSS SECTION - 3.5m WIDE FULL RURAL STANDARD PAVEMENT


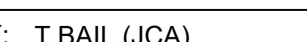
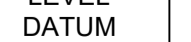



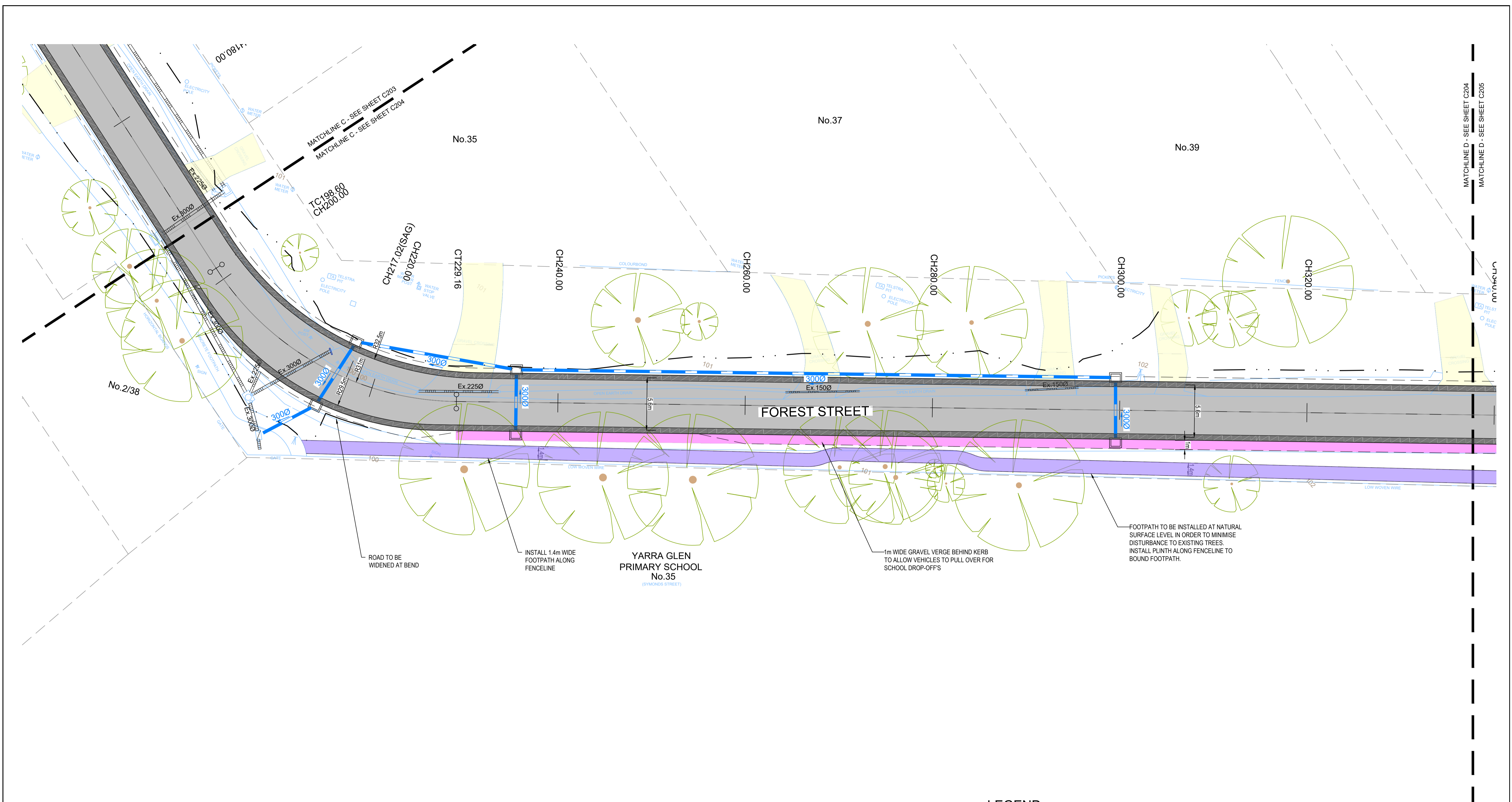
TYPICAL CROSS SECTION - 5.6m WIDE FULL
URBAN STANDARD PAVEMENT
NOT TO SCALE



TYPICAL CROSS SECTION - 5.6m WIDE FULL URBAN
STANDARD PAVEMENT ADJACENT TO SCHOOL
NOT TO SCALE

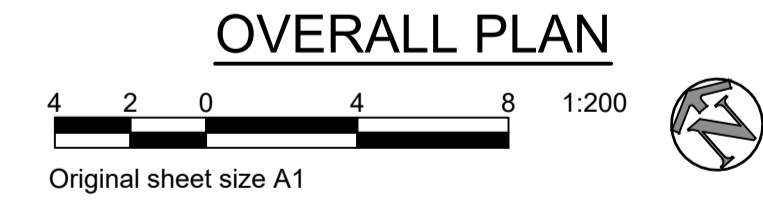
[illegible]

DATE	REVISION	AUTHORISED	VER	PLAN STATUS:	FUNCTIONAL DESIGN (NOT FOR CONSTRUCTION)	SCALES:	YARRA RANGES COUNCIL				
18.08.20	PUBLIC ISSUE	AC	00	<div><div>WARNING</div><div>BEWARE - UNDERGROUND SERVICES</div><div>THE LOCATIONS OF EXISTING UNDERGROUND SERVICES ARE APPROXIMATE ONLY AND THEIR EXACT DEPTH AND LOCATION SHOULD BE VERIFIED AND PROVEN ON SITE BY THE APPROPRIATE SERVICE PROVIDERS PRIOR TO ANY SITE EXCAVATION. NO GUARANTEE IS GIVEN THAT ALL EXISTING SERVICES ARE SHOWN. CONTRACTOR TO TAKE PRECAUTIONS TO AVOID CONFLICTS</div></div> <div><div><div>DIAL BEFORE YOU DIG www.1100.com.au</div><div>The Essential First Step</div></div><div><div><div>JCA Land Consultants THE SUBDIVISION SPECIALISTS Surveying - Engineering - Town Planning Suite 9, 303 Maroonдах Highway Ringwood Victoria, Australia 3134 Phone 03 9735 4888 Email enquiry@jca.com.au www.jca.com.au</div><div></div></div><div>JCA Ref: 25200</div></div></div>	AS SHOWN AT A1	<div>LEVEL DATUM</div> <div>A.H.D.</div> <div>COORDINATE DATUM</div> <div>MGA</div>		<div>ROAD RECONSTRUCTION</div> <div>FOREST STREET, YARRA GLEN</div> <div>DETAIL PLAN - SHEET 2 OF 8</div>	CHECKED BY	SHEET NO.	VERSION
21.09.20	ALIGNMENT AMENDED	AC	01		XXXX				PI-C202	02	
02.10.20	COUNCIL COMMENTS	AC	02		APPROVED				DRAWING NO.		
					XXXX				2019-024		
							MANAGER - INFRASTRUCTURE SERVICES				







NOTES:

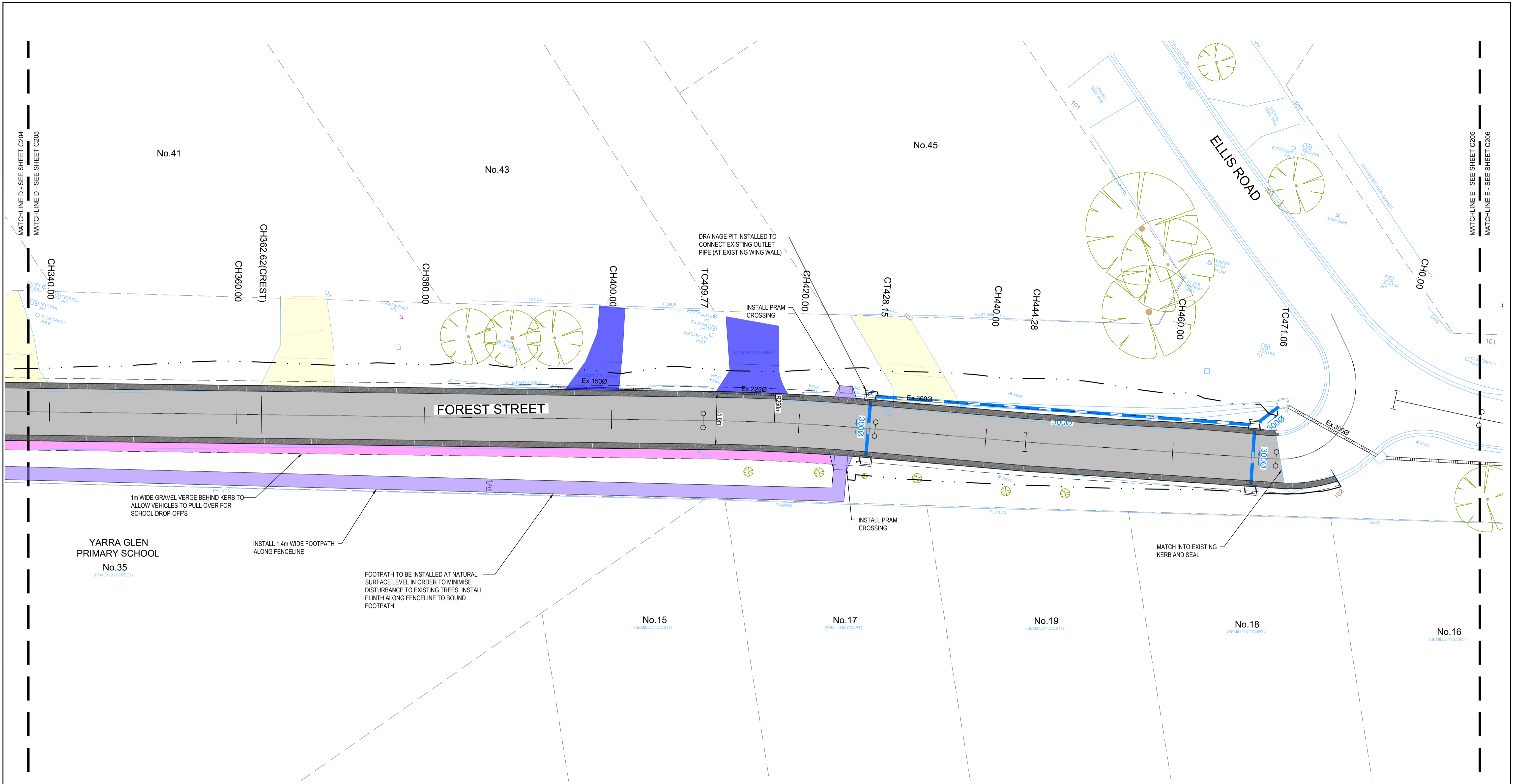
- REMOVE ALL EXISTING CROSSOVER PIPE CULVERTS AND DISPOSE OFF-SITE (UNLESS OTHERWISE NOTED);
- ALL EXISTING VEHICLE CROSSINGS TO BE RE-GRADED TO MATCH PROPOSED KERB/EDGE OF SEAL;
- BETWEEN ELLIS ROAD AND 'DEAD END' FULL WIDTH SEAL (INCLUDING OF SHOULDERS) TO BE INSTALLED AT VEHICLE CROSSINGS, TO PERMIT PASSING OF OPPOSING VEHICLES.



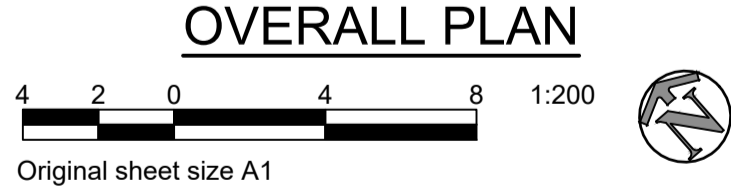
LEGEND	
	EXISTING DRAINAGE
	PROPOSED DRAINAGE
	PROPOSED KERB
	EXTENT OF NEW ROAD PAVEMENT
	EXTENT OF ASPHALT SEALED VEHICLE CROSSING (MIN 3m FROM KERB/EDGE OF ROAD)
	EXTENT OF CONCRETE VEHICLE CROSSING
	EXTENT OF REGRADED GRAVEL VEHICLE CROSSING
	EXTENT OF GRAVEL VEHICLE 'DROP-OFF' AREA
	EXTENT OF PROPOSED FOOTPATH
	EXISTING TREE

FUNCTIONAL ISSUE
FOR REVIEW PURPOSES ONLY
NOT TO BE USED FOR CONSTRUCTION

DATE		REVISION	AUTHORISED	VER.	PLAN STATUS:	SCALES:	YARRA RANGES COUNCIL					
18.08.20		PUBLIC ISSUE	AC	00	<div><div>WARNING</div><div>BEWARE - UNDERGROUND SERVICES</div><div>THE LOCATIONS OF EXISTING UNDERGROUND SERVICES ARE APPROXIMATE ONLY AND THEIR EXACT DEPTH AND LOCATION SHOULD BE VERIFIED AND PROVEN ON SITE BY THE APPROPRIATE SERVICE PROVIDERS PRIOR TO ANY SITE EXCAVATION. NO GUARANTEE IS GIVEN THAT ALL EXISTING SERVICES ARE SHOWN. CONTRACTOR TO TAKE PRECAUTIONS TO AVOID CONFLICTS.</div></div>	AS SHOWN AT A1	LEVEL DATUM A.H.D.		CHECKED BY XXXX	SHEET NO. PI-C204	VERSION 02	
21.09.20		ALIGNMENT AMENDED	AC	01		SURVEY BY: JCA						PLAN BY: T.BAIL (JCA)
02.10.20		COUNCIL COMMENTS	AC	02		CHECKED BY: A.CHARNOCK (JCA)						PROJECT ENGINEER: G.McCARTHY
						DATE: 24/06/2020						CAD FILE: 25200-C2 Public Issue.dwg
					<div><div><div>DIAL BEFORE YOU DIG www.1100.com.au The Essential First Step</div></div><div><div><div>JCA Land Consultants</div><div>THE SUBDIVISION SPECIALISTS</div><div>Surveying - Engineering - Town Planning</div><div>Suite 9, 303 Marcondah Highway Ringwood Victoria, Australia 3134 Phone 03 9735 4888 Email jca@jcalc.com.au www.jcalc.com.au</div></div><div><div><div>Quality Management System ISO 9001 trust-mark.com.au</div></div><div>JCA Ref: 25200</div></div></div></div>	COORDINATE DATUM MGA		APPROVED XXXX	DRAWING NO. 2019-024			
									MANAGER - INFRASTRUCTURE SERVICES			
DETAIL PLAN - SHEET 4 OF 8												


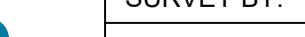



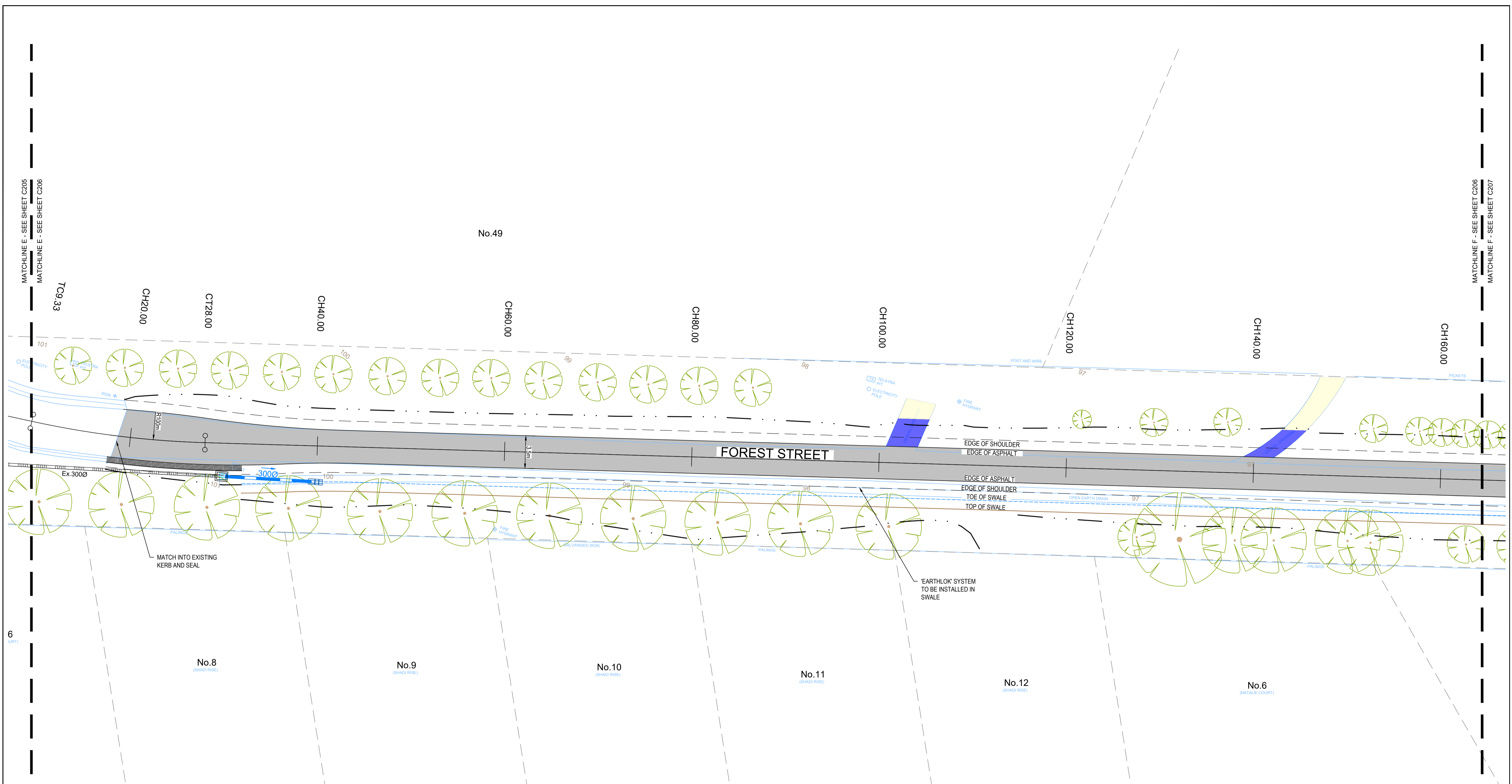
- NOTES:
- REMOVE ALL EXISTING CROSSOVER PIPE CULVERTS AND DISPOSE OFF-SITE (UNLESS OTHERWISE NOTED);
 - ALL EXISTING VEHICLE CROSSINGS TO BE RE-GRADED TO MATCH PROPOSED KERB/EDGE OF SEAL;
 - BETWEEN ELLIS ROAD AND 'DEAD END' FULL WIDTH SEAL (INCLUDING OF SHOULDERS) TO BE INSTALLED AT VEHICLE CROSSINGS, TO PERMIT PASSING OF OPPOSING VEHICLES.



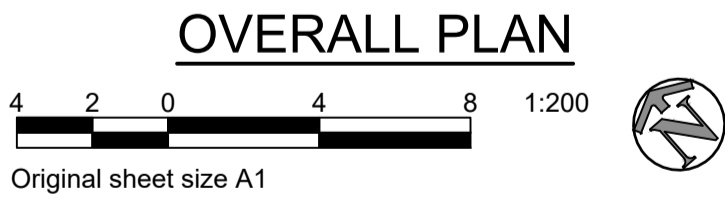
- LEGEND
- EXISTING DRAINAGE
 - PROPOSED DRAINAGE
 - PROPOSED KERB
 - EXTENT OF NEW ROAD PAVEMENT
 - EXTENT OF ASPHALT SEALED VEHICLE CROSSING (MIN 3m FROM KERB/EDGE OF ROAD)
 - EXTENT OF CONCRETE VEHICLE CROSSING
 - EXTENT OF REGRADED GRAVEL VEHICLE CROSSING
 - EXTENT OF GRAVEL VEHICLE 'DROP-OFF' AREA
 - EXTENT OF PROPOSED FOOTPATH
 - EXISTING TREE

FUNCTIONAL ISSUE
FOR REVIEW PURPOSES ONLY
NOT TO BE USED FOR CONSTRUCTION

DATE	REVISION	AUTHORISED	VER.	PLAN STATUS:	SCALES:	YARRA RANGES COUNCIL								
18.08.20	PUBLIC ISSUE	AC	00	<div><div><div>WARNING</div><div>BEWARE - UNDERGROUND SERVICES</div><div>THE LOCATIONS OF EXISTING UNDERGROUND SERVICES ARE APPROXIMATE ONLY AND THEIR EXACT DEPTH AND LOCATION SHOULD BE VERIFIED AND PROVEN ON SITE BY THE APPROPRIATE SERVICE PROVIDERS PRIOR TO ANY SITE EXCAVATION. NO GUARANTEE IS GIVEN THAT ALL EXISTING SERVICES ARE SHOWN. CONTRACTOR TO TAKE PRECAUTIONS TO AVOID CONFLICTS.</div></div><div><div>DIAL BEFORE YOU DIG www.1100.com.au The Essential First Step</div></div><div><div>JCA Land Consultants THE SUBDIVISION SPECIALISTS Surveying - Engineering - Town Planning Suite 9, 303 Marcondah Highway Ringwood Victoria, Australia 3134 Phone 03 9735 4888 Email jca@jcalc.com.au www.jcalc.com.au</div></div></div> <div>JCA Ref: 25200</div>	AS SHOWN AT A1	<div><div><div>LEVEL DATUM</div><div>A.H.D.</div><div>COORDINATE DATUM</div><div>MGA</div></div><div></div><div>ROAD RECONSTRUCTION FOREST STREET, YARRA GLEN</div><div>DETAIL PLAN - SHEET 5 OF 8</div></div>						CHECKED BY	SHEET NO.	VERSION
21.09.20	ALIGNMENT AMENDED	AC	01		SURVEY BY: JCA							XXXX	PI-C205	02
02.10.20	COUNCIL COMMENTS	AC	02		PLAN BY: T.BAIL (JCA)									
					CHECKED BY: A.CHARNOCK (JCA)									
					PROJECT ENGINEER: G.McCARTHY									
				DATE: 24/06/2020				APPROVED	DRAWING NO.					
				CAD FILE: 25200-C2 Public Issue.dwg				XXXX	2019-024					
								MANAGER - INFRASTRUCTURE SERVICES						






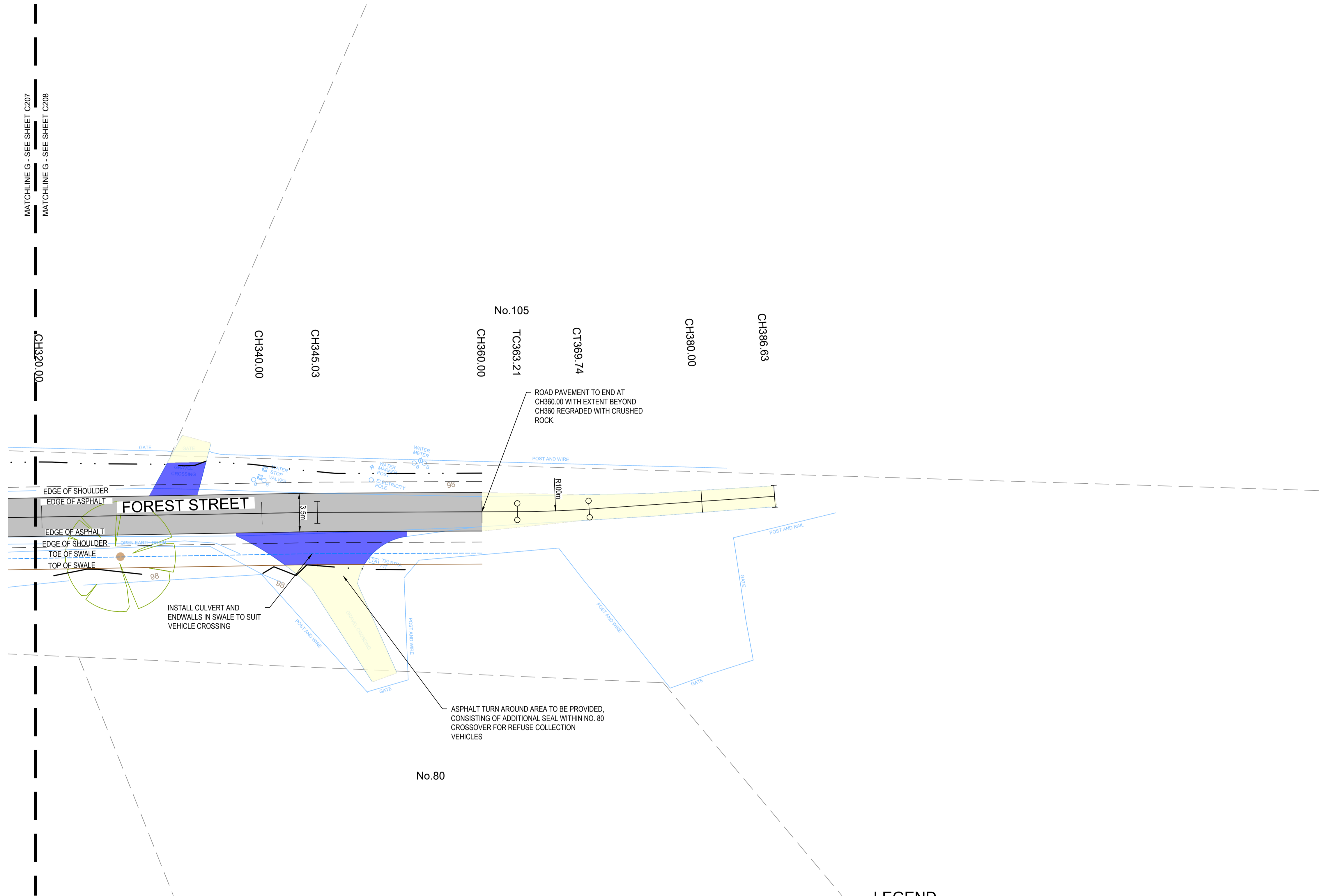
- NOTES:
- REMOVE ALL EXISTING CROSSOVER PIPE CULVERTS AND DISPOSE OFF-SITE (UNLESS OTHERWISE NOTED);
 - ALL EXISTING VEHICLE CROSSINGS TO BE RE-GRADED TO MATCH PROPOSED KERB/EDGE OF SEAL;
 - BETWEEN ELLIS ROAD AND 'DEAD END' FULL WIDTH SEAL (INCLUDING OF SHOULDERS) TO BE INSTALLED AT VEHICLE CROSSINGS, TO PERMIT PASSING OF OPPOSING VEHICLES.



- LEGEND
- EXISTING DRAINAGE
 - PROPOSED DRAINAGE
 - PROPOSED KERB
 - EXTENT OF NEW ROAD PAVEMENT
 - EXTENT OF ASPHALT SEALED VEHICLE CROSSING (MIN 3m FROM KERB/EDGE OF ROAD)
 - EXTENT OF CONCRETE VEHICLE CROSSING
 - EXTENT OF REGRADED GRAVEL VEHICLE CROSSING
 - EXTENT OF GRAVEL VEHICLE 'DROP-OFF' AREA
 - EXTENT OF PROPOSED FOOTPATH
 - EXISTING TREE

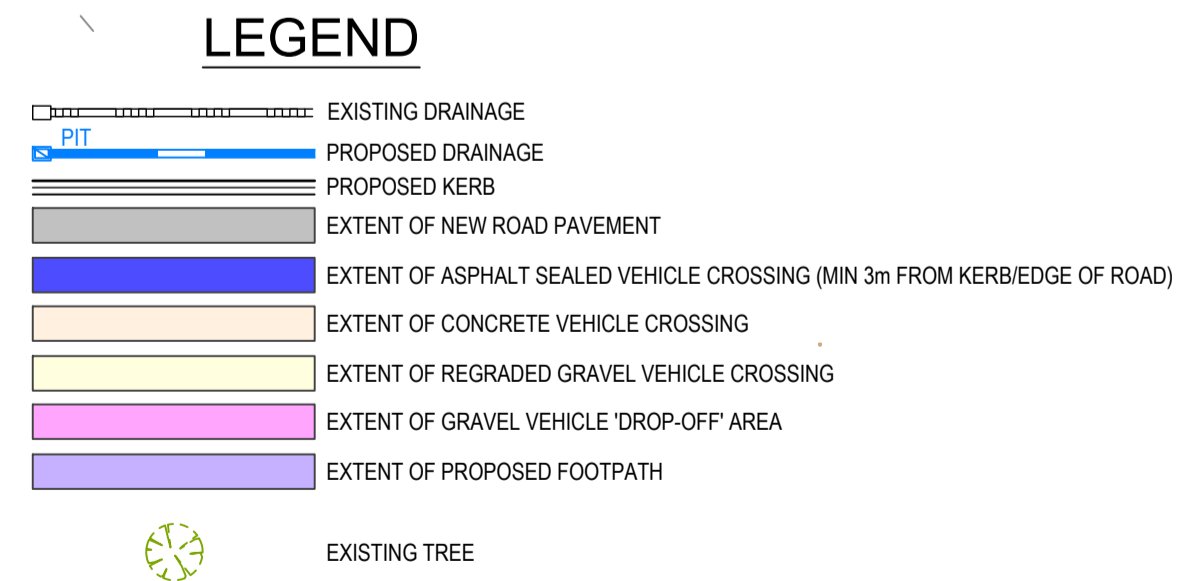
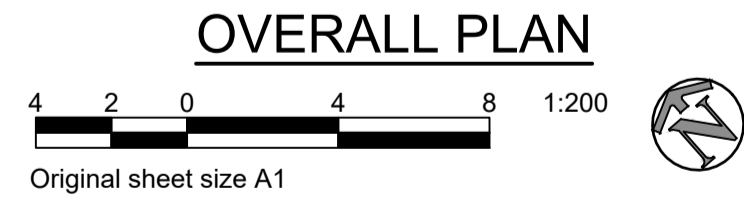
FUNCTIONAL ISSUE
FOR REVIEW PURPOSES ONLY
NOT TO BE USED FOR CONSTRUCTION

DATE	REVISION	AUTHORISED	VER.	PLAN STATUS:	SCALES:	YARRA RANGES COUNCIL						
18.08.20	PUBLIC ISSUE	AC	00	<div><div>WARNING</div><div>BEWARE - UNDERGROUND SERVICES</div><div>THE LOCATIONS OF EXISTING UNDERGROUND SERVICES ARE APPROXIMATE ONLY AND THEIR EXACT DEPTH AND LOCATION SHOULD BE VERIFIED AND PROVEN ON SITE BY THE APPROPRIATE SERVICE PROVIDERS PRIOR TO ANY SITE EXCAVATION. NO GUARANTEE IS GIVEN THAT ALL EXISTING SERVICES ARE SHOWN. CONTRACTOR TO TAKE PRECAUTIONS TO AVOID CONFLICTS.</div></div> <div><div><div>DIAL BEFORE YOU DIG www.1100.com.au</div><div>The Essential First Step</div></div><div><div><div>JCA Land Consultants</div><div>THE SUBDIVISION SPECIALISTS</div><div>Surveying - Engineering - Town Planning</div><div>Suite 9, 303 Marcondah Highway</div><div>Ringwood Victoria, Australia 3134</div><div>Phone 03 9735 4888 Email jca@jcalc.com.au www.jcalc.com.au</div></div><div>JCA Ref: 25200</div></div><div><div>AS SHOWN AT A1</div><div>SURVEY BY: JCA</div><div>PLAN BY: T.BAIL (JCA)</div><div>CHECKED BY: A.CHARNOCK (JCA)</div><div>PROJECT ENGINEER: G.McCARTHY</div><div>DATE: 24/06/2020</div><div>CAD FILE: 25200-C2 Public Issue.dwg</div></div><div><div>LEVEL DATUM A.H.D.</div><div>COORDINATE DATUM MGA</div></div><div><div><div>Yarra Ranges Council</div></div><div>ROAD RECONSTRUCTION FOREST STREET, YARRA GLEN</div><div>DETAIL PLAN - SHEET 6 OF 8</div></div><div><div>CHECKED BY XXXX</div><div>APPROVED XXXX</div><div>MANAGER - INFRASTRUCTURE SERVICES</div></div><div><div>SHEET NO. PI-C206</div><div>VERSION 02</div><div>DRAWING NO. 2019-024</div></div></div>								
21.09.20	ALIGNMENT AMENDED	AC	01									
02.10.20	COUNCIL COMMENTS	AC	02									



NOTES:





- REMOVE ALL EXISTING CROSSOVER PIPE CULVERTS AND DISPOSE OFF-SITE (UNLESS OTHERWISE NOTED);
- ALL EXISTING VEHICLE CROSSINGS TO BE RE-GRADED TO MATCH PROPOSED KERB/EDGE OF SEAL;
- BETWEEN ELLIS ROAD AND 'DEAD END' FULL WIDTH SEAL (INCLUDING OF SHOULDERS) TO BE INSTALLED AT VEHICLE CROSSINGS, TO PERMIT PASSING OF OPPOSING VEHICLES.



FUNCTIONAL ISSUE

FOR REVIEW PURPOSES ONLY

NOT TO BE USED FOR CONSTRUCTION

DATE		REVISION	AUTHORISED	VER.	PLAN STATUS:	SCALES:	YARRA RANGES COUNCIL				
18.08.20		PUBLIC ISSUE	AC	00	<div><div>WARNING</div><div>BEWARE - UNDERGROUND SERVICES</div><div>THE LOCATIONS OF EXISTING UNDERGROUND SERVICES ARE APPROXIMATE ONLY AND THEIR EXACT DEPTH AND LOCATION SHOULD BE VERIFIED AND PROVEN ON SITE BY THE APPROPRIATE SERVICE PROVIDERS PRIOR TO ANY SITE EXCAVATION. NO GUARANTEE IS GIVEN THAT ALL EXISTING SERVICES ARE SHOWN. CONTRACTOR TO TAKE PRECAUTIONS TO AVOID CONFLICTS.</div></div> <div><div><div>DIAL BEFORE YOU DIG www.1100.com.au</div><div>The Essential First Step</div></div><div><div><div>JCA Land Consultants</div><div>THE SUBDIVISION SPECIALISTS</div><div>Surveying - Engineering - Town Planning</div><div>Suite 9, 303 Marcondah Highway Ringwood Victoria, Australia 3134</div><div>Phone 03 9735 4888 Email jca@jcalc.com.au www.jcalc.com.au</div></div><div>JCA Ref: 25200</div></div><div><div><div>Quality Management System ISO 9001</div><div>trust-mark.com.au</div></div></div></div>	AS SHOWN AT A1	<div>LEVEL DATUM A.H.D.</div> <div></div> <div>COORDINATE DATUM MGA</div>	<div>ROAD RECONSTRUCTION</div> <div>FOREST STREET, YARRA GLEN</div> <div>DETAIL PLAN - SHEET 8 OF 8</div>	CHECKED BY	SHEET NO.	VERSION
21.09.20		ALIGNMENT AMENDED	AC	01		XXXX			PI-C208	02	
02.10.20		COUNCIL COMMENTS	AC	02		APPROVED			DRAWING NO.		
						XXXX			2019-024		
								MANAGER - INFRASTRUCTURE SERVICES			