

ROAD AND DRAINAGE RECONSTRUCTION WORKS

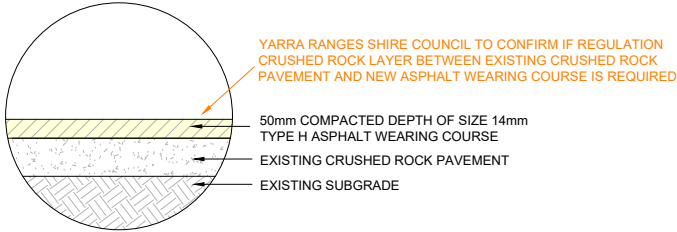
OLD COACH ROAD, MONTROSE



WARNING
BEWARE OF UNDERGROUND SERVICES
THE LOCATION OF EXISTING UNDERGROUND SERVICES ARE APPROXIMATE ONLY AND THEIR EXACT POSITION SHOULD BE PROVEN ON SITE. NO GUARANTEE IS GIVEN THAT ALL EXISTING SERVICES ARE SHOWN.

DRAWING INDEX

SHEET No.	TITLE
1	TITLE SHEET - LOCALITY PLAN, GENERAL NOTES, DETAILS & DRAWING INDEX
2	OVERALL PLAN
3	GENERAL LAYOUT PLAN
4	GENERAL LAYOUT PLAN
5	GENERAL LAYOUT PLAN
6	GENERAL LAYOUT PLAN
7	GENERAL LAYOUT PLAN



OVERLAY EXISTING PAVEMENT DETAIL
NOT TO SCALE
TO BE CONFIRMED BY YARRA RANGES SHIRE COUNCIL

NOTES

GENERAL

- THE CONTRACTOR IS TO VERIFY THE LOCATION AND DEPTH OF ALL UTILITY SERVICES PRIOR TO CARRYING OUT WORKS BY TELEPHONING 1100 "BEFORE YOU DIG AUSTRALIA".
- DISCREPANCIES BETWEEN PLANS AND EXISTING CONDITIONS ARE TO BE REPORTED IMMEDIATELY TO THE COUNCIL'S SUPERVISING ENGINEER.
- ALL SURPLUS EXCAVATED MATERIAL REMAINS THE PROPERTY OF THE CONTRACTOR UNLESS SPECIFIED OTHERWISE OR ADVISED BY THE COUNCIL'S SUPERVISING ENGINEER.
- "REMOVE" SHALL MEAN REMOVE OFF-SITE AND DISPOSE OF AT AN APPROVED DISPOSAL SITE AT THE CONTRACTOR'S EXPENSE, UNLESS SPECIFIED OTHERWISE.
- ON COMPLETION OF CONSTRUCTION ALL WORK AREA ARE TO BE CLEANED UP & REINSTATED TO THE SATISFACTION OF THE COUNCIL'S SUPERVISING ENGINEER.

PAVEMENT

- ROAD CROSSFALL TO BE 1 in 36 FALLING TOWARDS THE TABLE DRAIN OR KERB AND CHANNEL UNLESS SPECIFIED OTHERWISE.
- AT NEW FILL AREAS THE TOPSOIL SHALL BE STRIPPED AND FILLING MATERIAL PLACED IN 150mm THICK LAYER AND COMPACTED TO 95% A.A.S.H.O. COMPACTION TEST, THE TOPSOIL IS THEN RE-SPREAD ON THE BATTER AREAS.
- NEW CONCRETE FOOTPATH PAVING TO BE 32 MPa STRENGTH.
- TACTILE GROUND SURFACE INDICATOR (TGS) PAVERS ARE TO BE 300mm x 300mm x 40mm PRE-CAST CONCRETE PAVERS AND SHALL HAVE A MINIMUM LUMINANCE CONTRAST OF 30% COMPARED TO THE AMOUNT OF LIGHT REFLECTED FROM THE ADJACENT SURFACE.

ROADSIDE

- EXISTING DRIVEWAY ENTRANCES TO BE REINSTATED AND SEALED FOR 1.0m FROM EDGE OF SEAL WITH 50mm COMPACTED DEPTH 10mm TYPE N ASPHALT ON A BASE OF 100mm COMPACTED DEPTH CLASS 2 FINE CRUSHED ROCK.
- EXISTING DRIVEWAYS ARE TO BE REINSTATED FROM BACK OF KERB OR EDGE OF SEAL AT A MAXIMUM GRADE OF 1 in 8 FOR 2.0m THEN 1 in 4 THEREAFTER WITH A TRANSITION OF 1 in 6 FOR 2.0m IS PREFERRED WHERE POSSIBLE AS PER:
 - GRAVEL DRIVEWAY WITH 50mm COMPACTED DEPTH OF 3% CEMENT TREATED CRUSHED ROCK UNLESS SPECIFIED OTHERWISE.
 - ASPHALT DRIVEWAYS WITH 50mm COMPACTED DEPTH 10mm NOMINAL SIZE ASPHALT ON A BASE OF 100mm COMPACTED DEPTH CLASS 2 FINE CRUSHED ROCK.
 - CONCRETE DRIVEWAYS WITH 150mm DEPTH CONCRETE PAVING ON A BASE OF 50mm COMPACTED DEPTH CLASS 2 FINE CRUSHED ROCK.
 - BRICK PAVEMENT DRIVEWAYS WITH SUITABLE HEAVY DUTY BRICK PAVERS ON 30mm OF BEDDING SAND ON A BASE OF 100mm COMPACTED DEPTH CLASS 2 FINE CRUSHED ROCK.
- TABLE DRAIN TO BE CLEANED, REDEFINED OR DEFINED AS NECESSARY ALONG THE HIGH SIDE OF THE ROADWAY, REFER TO TYPE OF SECTION FOR TABLE DRAIN PROFILE, MINIMUM DEPTH 300mm.

DRAINAGE

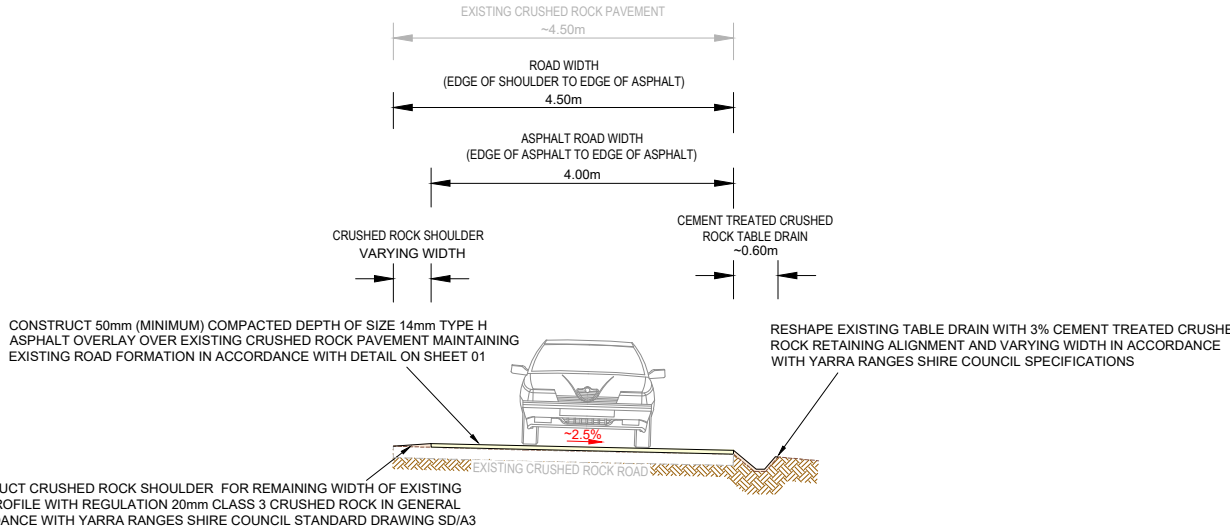
- ALL DRAINAGE PIPES TO BE CLASS 2 RUBBER RING JOINTED SPIGOT AND SOCKET UNLESS SPECIFIED OTHERWISE.
- ALL PROPERTY STORM WATER OUTLETS WITHIN 3.0m OF THE NEW DRAIN OR KERB ARE TO BE CONNECTED TO UNDERGROUND DRAINAGE PIPES WHERE AVAILABLE, OR BACK OF KERB WHERE UNDERGROUND DRAINAGE PIPES ARE NOT AVAILABLE.
- DRAINAGE PITS GREATER THAN 1.0m IN DEPTH TO BE PROVIDED WITH STEP IRONS AT 300mm CENTRES VERTICALLY.
- A.G. DRAIN PLACED BEHIND KERB AND CHANNEL AS SHOWN ON PLAN IF WITHIN 3.0m OF ANY TREE EXCAVATION TO BE HAND DUG OR BORED TO MINIMISE ROOT DAMAGE OF TREE.

VEGETATION

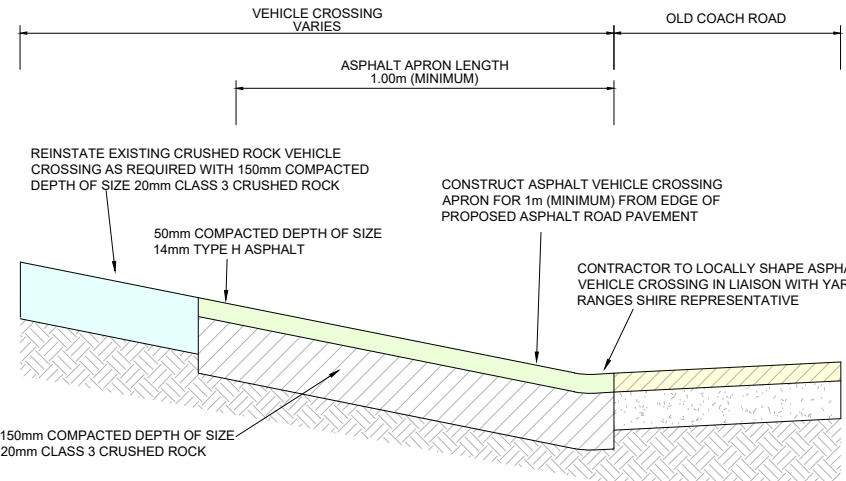
- TREE PROTECTION ZONES (TPZ) HAVE BEEN SHOWN FOR ALL TREES LOCATED CLOSE TO THE WORKS AREA. WORKS AND ANY STOCKPILES OF CONSTRUCTION EQUIPMENT AND MATERIAL ARE TO BE CONTAINED OUTSIDE THE TPZ UNLESS SPECIFICALLY APPROVED BY THIS PLAN. PRIOR APPROVAL MUST BE SOUGHT FOR ANY WORKS NOT SPECIFIED AND APPROVED BY THIS PLAN THAT ARE TO BE CONDUCTED WITHIN THE TPZ OF ANY TREE.
- ONLY TREES SHOWN TO BE REMOVED ON THIS PLAN CAN BE REMOVED. ANY DAMAGE TO THE BARK, BRANCHES, TRUNKS OR ROOTS OF OTHER TREES SHOULD BE IMMEDIATELY REPORTED TO COUNCIL'S CONSTRUCTION SURVEILLANCE OFFICER BEFORE ANY WORKS CONTINUE AROUND THE SUBJECT VEGETATION.

ANCILLARY

- ALL EXISTING SIGNS AND POSTS REMAIN THE PROPERTY OF THE COUNCIL.

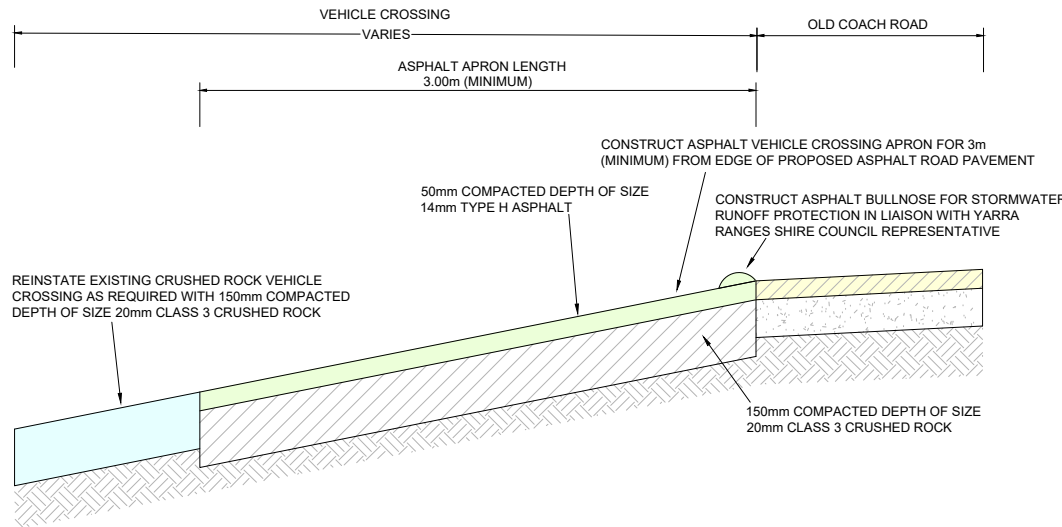


TYPICAL CROSS SECTION



ASPHALT APRON VEHICLE CROSSING DETAIL

NOT TO SCALE
TO BE CONFIRMED BY YARRA RANGES SHIRE COUNCIL



ASPHALT APRON VEHICLE CROSSING DETAIL (REVERSE FALL)

NOT TO SCALE
TO BE CONFIRMED BY YARRA RANGES SHIRE COUNCIL

VER	DESCRIPTION	DATE
01	CONCEPT DESIGN	24-08-2022
00	CONCEPT DESIGN	15-08-2022

CONSULTANT ENGINEER

PROCIVIL
CONSULTING ENGINEERING

Specialist Civil Engineering Design Consultants

Commitment | Communication | Collaboration

PROCIVIL CONSULTING PTY LTD
ABN 51 759 386 092
SUITE 20, 45-51 RINGWOOD ST, RINGWOOD VIC 3134
PO BOX 164, RINGWOOD VIC 3134
P: (03) 8644 6834
E: info@procivil.com.au
www.procivil.com.au

CIVIL ENGINEERING DESIGN
JUSTIN SIMS

TECHNICAL PEER REVIEW
KURT CHAMBERLAIN

REGISTERED & CHARTERED PROFESSIONAL ENGINEER
CHRIS PROCTOR

ORIENTATION

OR AS SHOWN

ORIGINAL SCALE & SHEET SIZE
AS SHOWN @ A1

HEIGHT DATUM
AHD

COORDINATE DATUM
MGA 2020 ZONE 55

SURVEY DATE
01-07-2022

AERIAL IMAGE DATE
28-11-2021

LOCAL GOVERNMENT AREA
SHIRE OF YARRA RANGES

CLIENT

CLIENT PROJECT MANAGER / CONTACT
GRANT MCCARTHY | YARRA RANGES SHIRE COUNCIL

CONCEPT DESIGN

ROAD AND DRAINAGE RECONSTRUCTION WORKS
OLD COACH ROAD, MONTROSE

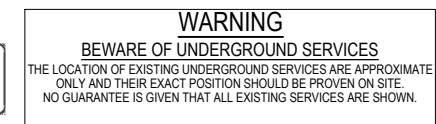
TITLE SHEET - LOCALITY PLAN, GENERAL NOTES, DETAILS & DRAWING INDEX

PROJECT No.
PC22012

SHEET No.
01 OF 07

VERSION
01

DWG No.
PC22012-01 - 01



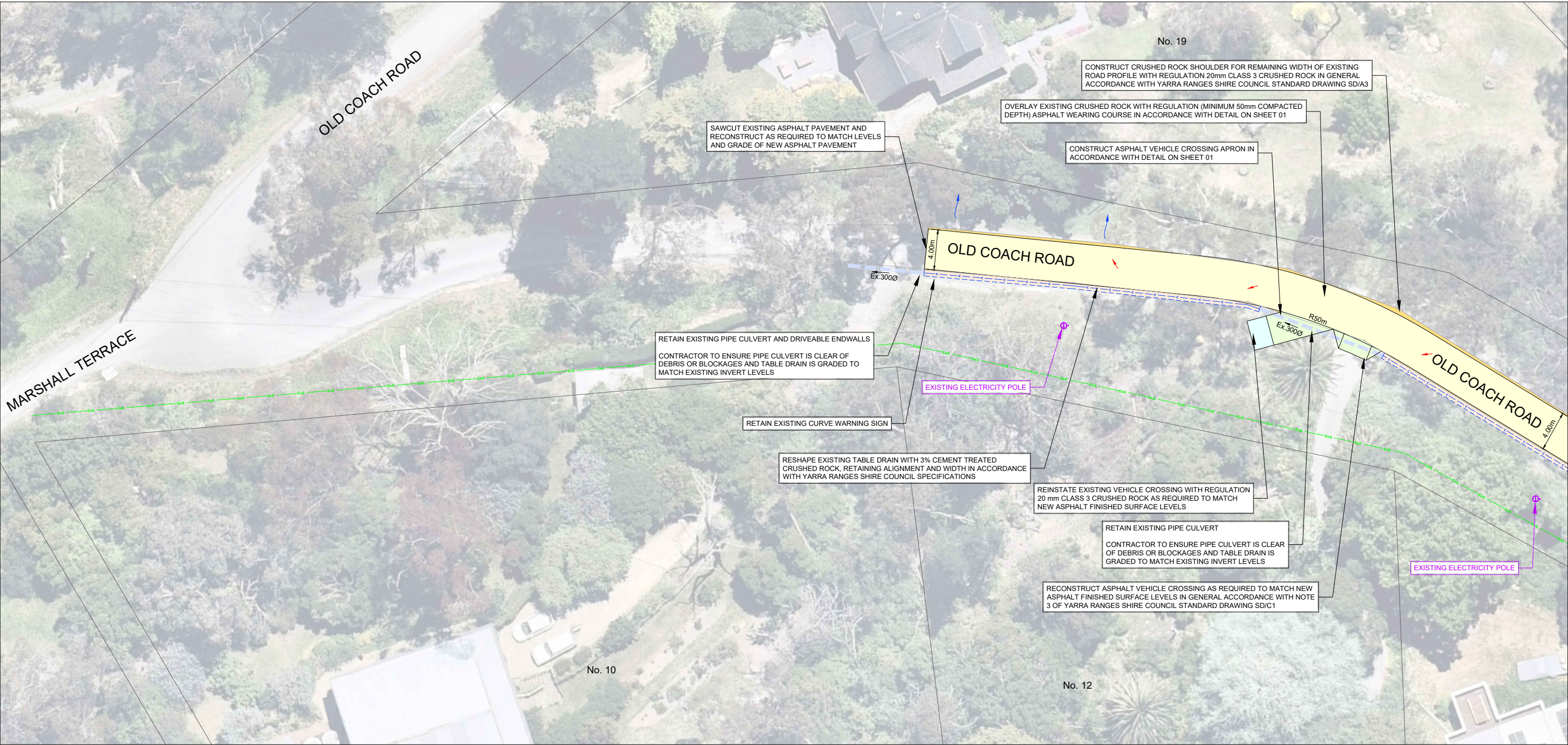
--	--	--	--	--	--	--	--	--	--	--	--	--	--	--	--	--	--	--	--	--	--	--	--	--	--	--	--	--	--	--	--	--	--	--	--	--	--	--	--	--	--	--	--	--	--	--	--	--	--	--	--	--	--	--	--	--	--	--	--	--	--	--	--	--	--	--	--	--	--	--	--	--	--	--	--	--	--	--	--	--	--	--	--	--	--	--	--	--	--	--	--	--	--	--	--	--	--	--	--	--	--	--	--	--	--	--	--	--	--	--	--	--	--	--	--	--	--	--	--	--	--	--	--	--	--	--	--	--	--	--	--	--	--	--	--	--	--	--	--	--	--	--	--	--	--	--	--	--	--	--	--	--	--	--	--	--	--	--	--	--	--	--	--	--	--	--	--	--	--	--	--	--	--	--	--	--	--	--	--	--	--	--	--	--	--	--	--	--	--	--	--	--	--	--	--	--	--	--	--	--	--	--	--	--	--	--	--	--	--	--	--	--	--	--	--	--	--	--	--	--	--	--	--	--	--	--	--	--	--	--	--	--	--	--	--	--	--	--	--	--	--	--	--	--	--	--	--	--	--	--	--	--	--	--	--	--	--	--	--	--	--	--	--	--	--	--	--	--	--	--	--	--	--	--	--	--	--	--	--	--	--	--	--	--	--	--	--	--	--	--	--	--	--	--	--	--	--	--	--	--	--	--	--	--	--	--	--	--	--	--	--	--	--	--	--	--	--	--	--	--	--	--	--	--	--	--	--	--	--	--	--	--	--	--	--	--	--	--	--	--	--	--	--	--	--	--	--	--	--	--	--	--	--	--	--	--	--	--	--	--	--	--	--	--	--	--	--	--	--	--	--	--	--	--	--	--	--	--	--	--	--	--	--	--	--	--	--	--	--	--	--	--	--	--	--	--	--	--	--	--	--	--	--	--	--	--	--	--	--	--	--	--	--	--	--	--	--	--	--	--	--	--	--	--	--	--	--	--	--	--	--	--	--	--	--	--	--	--	--	--	--	--	--	--	--	--	--	--	--	--	--	--	--	--	--	--	--	--	--	--	--	--	--	--	--	--	--	--	--	--	--	--	--	--	--	--	--	--	--	--	--	--	--	--	--	--	--	--	--	--	--	--	--	--	--	--	--	--	--	--	--	--	--	--	--	--	--	--	--	--	--	--	--	--	--	--	--	--	--	--	--	--	--	--	--	--	--	--	--	--	--	--	--	--	--	--	--	--	--	--	--	--	--	--	--	--	--	--	--	--	--	--	--	--	--	--	--	--	--	--	--	--	--	--	--	--	--	--	--	--	--	--	--	--	--	--	--	--	--	--	--	--	--	--	--	--	--	--	--	--	--	--	--	--	--	--	--	--	--	--	--	--	--	--	--	--	--	--	--	--	--	--	--	--	--	--	--	--	--	--	--	--	--	--	--	--	--	--	--	--	--	--	--	--	--	--	--	--	--	--	--	--	--	--	--	--	--	--	--	--	--	--	--	--	--	--	--	--	--	--	--	--	--	--	--	--	--	--	--	--	--	--	--	--	--	--	--	--	--	--	--	--	--	--	--	--	--	--	--	--	--	--	--	--	--	--	--	--	--	--	--	--	--	--	--	--	--	--	--	--	--	--	--	--	--	--	--	--	--	--	--	--	--	--	--	--	--	--	--	--	--	--	--	--	--	--	--	--	--	--	--	--	--	--	--	--	--	--	--	--	--	--	--	--	--	--	--	--	--	--	--	--	--	--	--	--	--	--	--	--	--	--	--	--	--	--	--	--	--	--	--	--	--	--	--	--	--	--	--	--	--	--	--	--	--	--	--	--	--	--	--	--	--	--	--	--	--	--	--	--	--	--	--	--	--	--	--	--	--	--	--	--	--	--	--	--	--	--	--	--	--	--	--	--	--	--	--	--	--	--	--	--	--	--	--	--	--	--	--	--	--	--	--	--	--	--	--	--	--	--	--	--	--	--	--	--	--	--	--	--	--	--	--	--	--	--	--	--	--	--	--	--	--	--	--	--	--	--	--	--	--	--	--	--	--	--	--	--	--	--	--	--	--	--	--	--	--	--	--	--	--	--	--	--	--	--	--	--	--	--	--	--	--	--	--	--	--	--	--	--	--	--	--	--	--	--	--	--	--	--	--	--	--	--	--	--	--	--	--	--	--	--	--	--	--	--	--	--	--	--	--	--	--	--	--	--	--	--	--	--	--	--	--	--	--	--	--	--	--	--	--	--	--	--	--	--	--	--	--	--	--	--	--	--	--	--	--	--	--	--	--	--	--	--	--	--	--	--	--	--	--	--	--	--	--	--	--	--	--	--	--	--	--	--	--	--	--	--	--	--	--	--	--	--	--	--	--	--	--	--	--	--	--	--	--	--	--	--	--	--	--	--	--	--	--	--	--	--	--	--	--	--	--	--	--	--	--	--	--	--	--	--	--	--	--	--	--	--	--	--	--	--	--	--	--	--	--	--	--	--	--	--	--	--	--	--	--	--	--	--	--	--	--	--	--	--	--	--	--	--	--	--	--	--	--	--	--	--	--	--	--	--	--	--	--	--	--	--	--	--	--	--	--	--	--	--	--	--	--	--	--	--	--	--	--	--	--	--	--	--	--	--	--	--	--	--	--	--	--	--	--	--	--	--	--	--	--	--	--	--	--	--	--	--	--	--	--	--	--	--	--	--	--	--	--	--	--	--	--	--	--	--	--	--	--	--	--	--	--	--	--	--	--	--	--	--	--	--	--	--	--	--	--	--	--	--	--	--	--	--	--	--	--	--	--	--	--	--	--	--	--	--	--	--	--	--	--	--	--	--	--	--	--	--	--	--	--	--	--	--	--	--	--	--	--	--	--	--	--	--	--	--	--	--	--	--	--	--	--	--	--	--	--	--	--	--	--	--	--	--	--	--	--	--	--	--	--	--	--	--	--	--	--	--	--	--	--	--	--	--	--	--	--	--	--	--	--	--	--	--	--	--	--	--	--	--	--	--	--	--	--	--	--	--	--	--	--	--	--	--	--	--	--	--	--	--	--	--	--	--	--	--	--	--	--	--	--	--	--	--	--	--	--	--	--	--	--	--	--	--	--	--	--	--	--	--	--	--	--	--	--	--	--	--	--	--	--	--	--	--	--	--	--	--	--	--	--	--	--	--	--	--	--	--	--	--	--	--	--	--	--	--	--	--	--	--	--	--	--	--	--	--	--	--	--	--	--	--	--	--	--	--	--	--	--	--	--	--	--	--	--	--	--	--	--	--	--	--	--	--	--	--	--	--	--	--	--	--	--	--	--	--	--	--	--	--	--	--	--	--	--	--	--	--	--	--	--	--	--	--	--	--	--	--	--	--	--	--	--	--	--	--	--	--	--	--	--	--	--	--	--	--	--	--	--	--	--	--	--	--	--	--	--	--	--

LEGEND

- ASPHALT OVERLAY WEARING COURSE - OVERLAY IN ACCORDANCE WITH DETAIL ON SHEET 01
- CONCRETE VEHICLE CROSSING - 150mm THICK 32MPa CONCRETE ON 50mm COMPACTED DEPTH SIZE 20mm CLASS 3 CRUSHED ROCK IN GENERAL ACCORDANCE WITH SECTION A-A OF YARRA RANGES SHIRE COUNCIL STANDARD DRAWING SD / C2
- CRUSHED ROCK SHOULDER - REGULATION (MINIMUM 75mm COMPACTED DEPTH) SIZE 20mm CLASS 3 CRUSHED ROCK SHOULDER CONSTRUCTED IN ACCORDANCE WITH YARRA RANGES SHIRE COUNCIL STANDARD DRAWING SD / A3
- CEMENT TREATED CRUSHED ROCK TABLE DRAIN - REGULATION (MINIMUM 100mm COMPACTED DEPTH) SIZE 20mm 3% CEMENT TREATED CLASS 3 CRUSHED ROCK
- CRUSHED ROCK VEHICLE CROSSING - REGULATION (MINIMUM 150mm COMPACTED DEPTH) SIZE 20mm CLASS 3 CRUSHED ROCK IN ACCORDANCE WITH YARRA RANGES SHIRE COUNCIL STANDARD DRAWING SD / C4
- ASPHALT VEHICLE CROSSING - 50mm COMPACTED DEPTH SIZE 14mm TYPE H ASPHALT ON 150mm CRUSHED ROCK IN ACCORDANCE WITH NOTE 3 OF YARRA RANGES SHIRE COUNCIL STANDARD DRAWING SD / C1
- PROPOSED PAVEMENT GRADE
- EXISTING DRAINAGE PIPE
- NEW DRAINAGE PIT WITH PIT NUMBER AND PIPE
- TABLE DRAIN INVERT
- EXISTING GAS
- LAWN AREA TO BE REINSTATED WITH YARRA RANGES SHIRE COUNCIL APPROVED TOPSOIL AND GRASS SEED



WARNING
BEWARE OF UNDERGROUND SERVICES
THE LOCATION OF EXISTING UNDERGROUND SERVICES ARE APPROXIMATE ONLY AND THEIR EXACT POSITION SHOULD BE PROVEN ON SITE. NO GUARANTEE IS GIVEN THAT ALL EXISTING SERVICES ARE SHOWN.



GENERAL LAYOUT PLAN



01	CONCEPT DESIGN	24-08-2022
00	CONCEPT DESIGN	15-08-2022
VER	DESCRIPTION	DATE

CONSULTANT ENGINEER

PROCIVIL
CONSULTING ENGINEERING

Specialist Civil Engineering Design Consultants
Commitment | Communication | Collaboration

PROCIVIL CONSULTING PTY LTD
ABN 51 759 386 092
SUITE 20, 45-51 RINGWOOD ST, RINGWOOD VIC 3134
PO BOX 164, RINGWOOD VIC 3134
P: (03) 8644 6834
E: info@procivil.com.au
www.procivil.com.au

CIVIL ENGINEERING DESIGN
JUSTIN SIMS

TECHNICAL PEER REVIEW
KURT CHAMBERLAIN

REGISTERED & CHARTERED PROFESSIONAL ENGINEER
CHRIS PROCTOR

ORIENTATION

OR AS SHOWN

ORIGINAL SCALE & SHEET SIZE
AS SHOWN @ A1

HEIGHT DATUM
AHD

COORDINATE DATUM
MGA 2020 ZONE 55

SURVEY DATE
01-07-2022

AERIAL IMAGE DATE
28-11-2021

LOCAL GOVERNMENT AREA
SHIRE OF YARRA RANGES

CLIENT

CLIENT PROJECT MANAGER / CONTACT
GRANT MCCARTHY | YARRA RANGES SHIRE COUNCIL













CONCEPT DESIGN

ROAD AND DRAINAGE RECONSTRUCTION WORKS
OLD COACH ROAD, MONTROSE

GENERAL LAYOUT PLAN

PROJECT No.	PC22012
SHEET No.	03 OF 07
VERSION	01
DWG No.	PC22012 -03 - 01

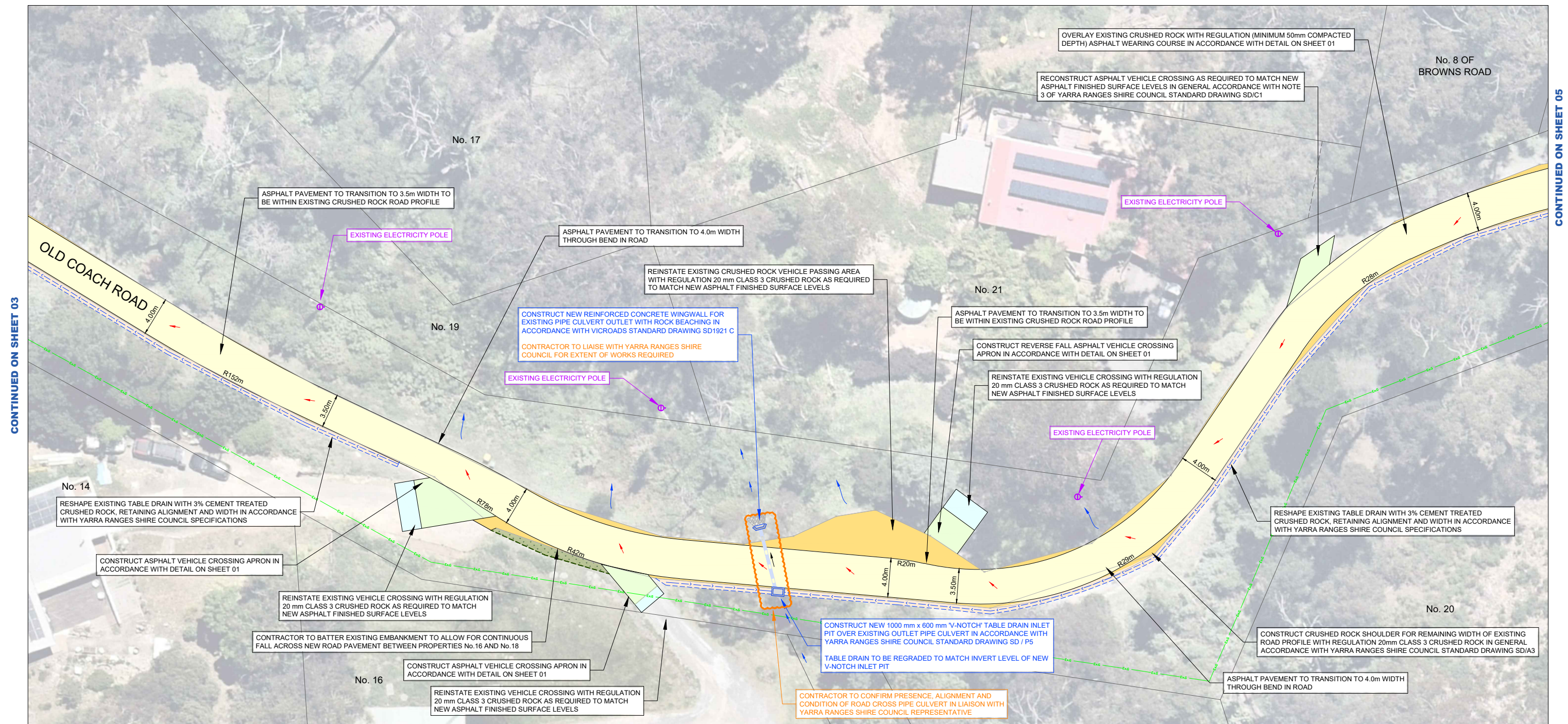
LEGEND

- | | | | |
|--|--|---|---|
|  | ASPHALT OVERLAY WEARING COURSE - OVERLAY IN ACCORDANCE WITH DETAIL ON SHEET 01 |  | CONCRETE VEHICLE CROSSING - 150mm THICK 32MPa CONCRETE ON 50mm COMPACTED DEPTH SIZE 20mm CLASS 3 CRUSHED ROCK IN GENERAL ACCORDANCE WITH SECTION A-A OF YARRA RANGES SHIRE COUNCIL STANDARD DRAWING SD / C2 |
|  | CRUSHED ROCK SHOULDER - REGULATION (MINIMUM 75mm COMPACTED DEPTH) SIZE 20mm CLASS 3 CRUSHED ROCK SHOULDER CONSTRUCTED IN ACCORDANCE WITH YARRA RANGES SHIRE COUNCIL STANDARD DRAWING SD / A3 |  | LAWN AREA TO BE REINSTATED WITH YARRA RANGES SHIRE COUNCIL APPROVED TOPSOIL AND GRASS SEED |
|  | CEMENT TREATED CRUSHED ROCK TABLE DRAIN - REGULATION (MINIMUM 100mm COMPACTED DEPTH) SIZE 20mm 3% CEMENT TREATED CLASS 3 CRUSHED ROCK |  | PROPOSED PAVEMENT GRADE |
|  | CRUSHED ROCK VEHICLE CROSSING - REGULATION (MINIMUM 150mm COMPACTED DEPTH) SIZE 20mm CLASS 3 CRUSHED ROCK IN ACCORDANCE WITH YARRA RANGES SHIRE COUNCIL STANDARD DRAWING SD / C4 |  | EXISTING DRAINAGE PIPE |
|  | ASPHALT VEHICLE CROSSING - 50mm COMPACTED DEPTH SIZE 14mm TYPE H ASPHALT ON 150mm CRUSHED ROCK IN ACCORDANCE WITH NOTE 3 OF YARRA RANGES SHIRE COUNCIL STANDARD DRAWING SD / C1 |  | NEW DRAINAGE PIT WITH PIT NUMBER AND PIPE |
| | |  | TABLE DRAIN INVERT |
| | |  | EXISTING GAS |



WARNING

BEWARE OF UNDERGROUND SERVICES
THE LOCATION OF EXISTING UNDERGROUND SERVICES ARE APPROXIMATE ONLY AND THEIR EXACT POSITION SHOULD BE PROVEN ON SITE. NO GUARANTEE IS GIVEN THAT ALL EXISTING SERVICES ARE SHOWN.



GENERAL LAYOUT PLAN

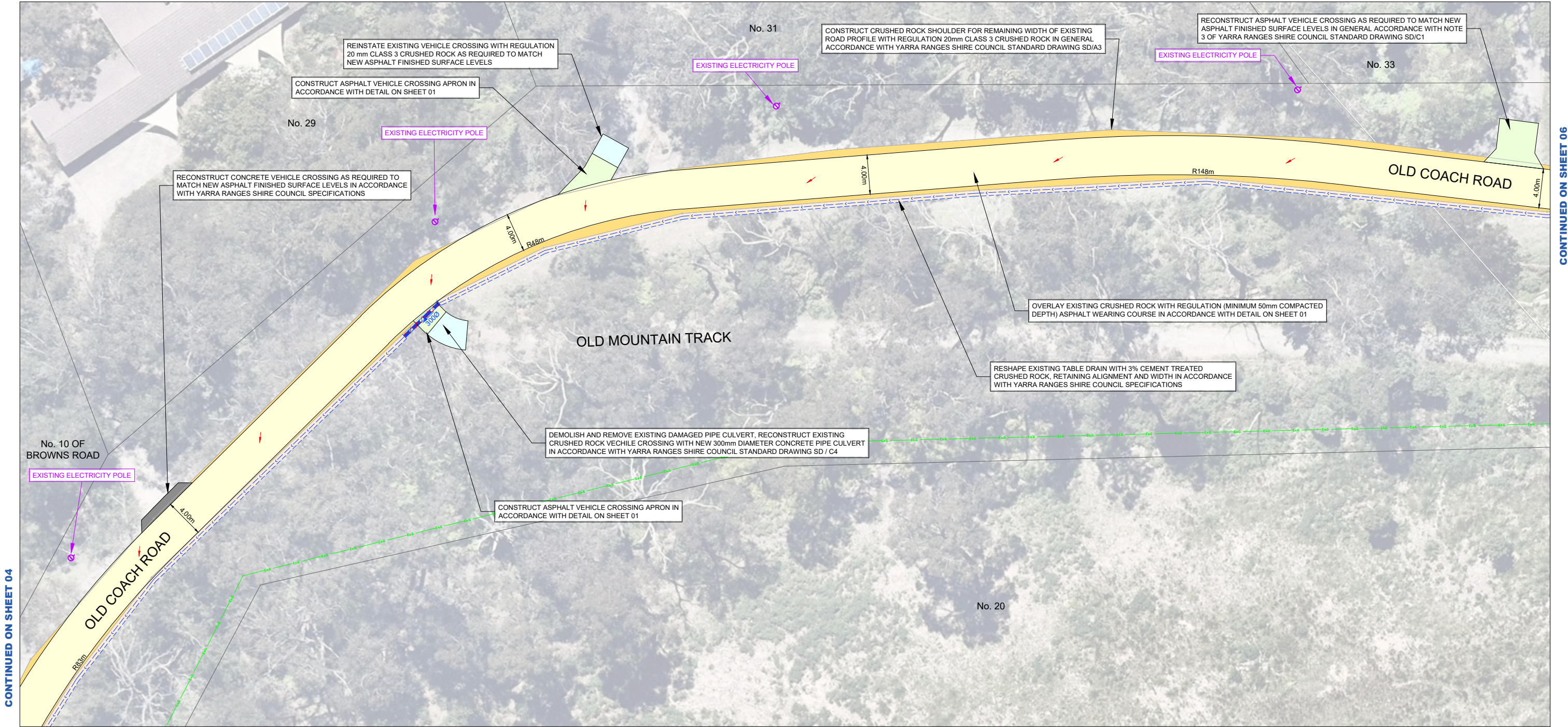
[illegible]

LEGEND

- ASPHALT OVERLAY WEARING COURSE - OVERLAY IN ACCORDANCE WITH DETAIL ON SHEET 01
- CRUSHED ROCK SHOULDER - REGULATION (MINIMUM 75mm COMPACTED DEPTH) SIZE 20mm CLASS 3 CRUSHED ROCK SHOULD BE CONSTRUCTED IN ACCORDANCE WITH YARRA RANGES SHIRE COUNCIL STANDARD DRAWING SD / A3
- CEMENT TREATED CRUSHED ROCK TABLE DRAIN - REGULATION (MINIMUM 100mm COMPACTED DEPTH) SIZE 20mm 3% CEMENT TREATED CLASS 3 CRUSHED ROCK
- CRUSHED ROCK VEHICLE CROSSING - REGULATION (MINIMUM 150mm COMPACTED DEPTH) SIZE 20mm CLASS 3 CRUSHED ROCK IN ACCORDANCE WITH YARRA RANGES SHIRE COUNCIL STANDARD DRAWING SD / C4
- ASPHALT VEHICLE CROSSING - 50mm COMPACTED DEPTH SIZE 14mm TYPE H ASPHALT ON 150mm CRUSHED ROCK IN ACCORDANCE WITH NOTE 3 OF YARRA RANGES SHIRE COUNCIL STANDARD DRAWING SD / C1
- CONCRETE VEHICLE CROSSING - 150mm THICK 32MPa CONCRETE ON 50mm COMPACTED DEPTH SIZE 20mm CLASS 3 CRUSHED ROCK IN GENERAL ACCORDANCE WITH SECTION A-A OF YARRA RANGES SHIRE COUNCIL STANDARD DRAWING SD / C2
- LAWN AREA TO BE REINSTATED WITH YARRA RANGES SHIRE COUNCIL APPROVED TOPSOIL AND GRASS SEED
- PROPOSED PAVEMENT GRADE
- EXISTING DRAINAGE PIPE
- NEW DRAINAGE PIT WITH PIT NUMBER AND PIPE
- TABLE DRAIN INVERT
- EXISTING GAS



WARNING
BEWARE OF UNDERGROUND SERVICES
THE LOCATION OF EXISTING UNDERGROUND SERVICES ARE APPROXIMATE ONLY AND THEIR EXACT POSITION SHOULD BE PROVEN ON SITE. NO GUARANTEE IS GIVEN THAT ALL EXISTING SERVICES ARE SHOWN.



GENERAL LAYOUT PLAN



01	CONCEPT DESIGN	24-08-2022
00	CONCEPT DESIGN	15-08-2022
VER	DESCRIPTION	DATE

CONSULTANT ENGINEER

PROCIVIL
CONSULTING ENGINEERING

Specialist Civil Engineering Design Consultants
Commitment | Communication | Collaboration

PROCIVIL CONSULTING PTY LTD
ABN 51 759 386 092
SUITE 20, 45-51 RINGWOOD ST, RINGWOOD VIC 31134
PO BOX 164, RINGWOOD VIC 31134
P: (03) 8644 6834
E: info@procivil.com.au
www.procivil.com.au

CIVIL ENGINEERING DESIGN
JUSTIN SIMS

TECHNICAL PEER REVIEW
KURT CHAMBERLAIN

REGISTERED & CHARTERED PROFESSIONAL ENGINEER
CHRIS PROCTOR

ORIENTATION

OR AS SHOWN

ORIGINAL SCALE & SHEET SIZE
AS SHOWN @ A1

HEIGHT DATUM
AHD

COORDINATE DATUM
MGA 2020 ZONE 55

SURVEY DATE
01-07-2022

AERIAL IMAGE DATE
28-11-2021

LOCAL GOVERNMENT AREA
SHIRE OF YARRA RANGES

CLIENT

CLIENT PROJECT MANAGER / CONTACT
GRANT MCCARTHY | YARRA RANGES SHIRE COUNCIL

CONCEPT DESIGN

ROAD AND DRAINAGE RECONSTRUCTION WORKS
OLD COACH ROAD, MONTROSE

GENERAL LAYOUT PLAN

PROJECT No.	PC22012
SHEET No.	05 OF 07
VERSION	01
DWG No.	PC22012-05 - 01

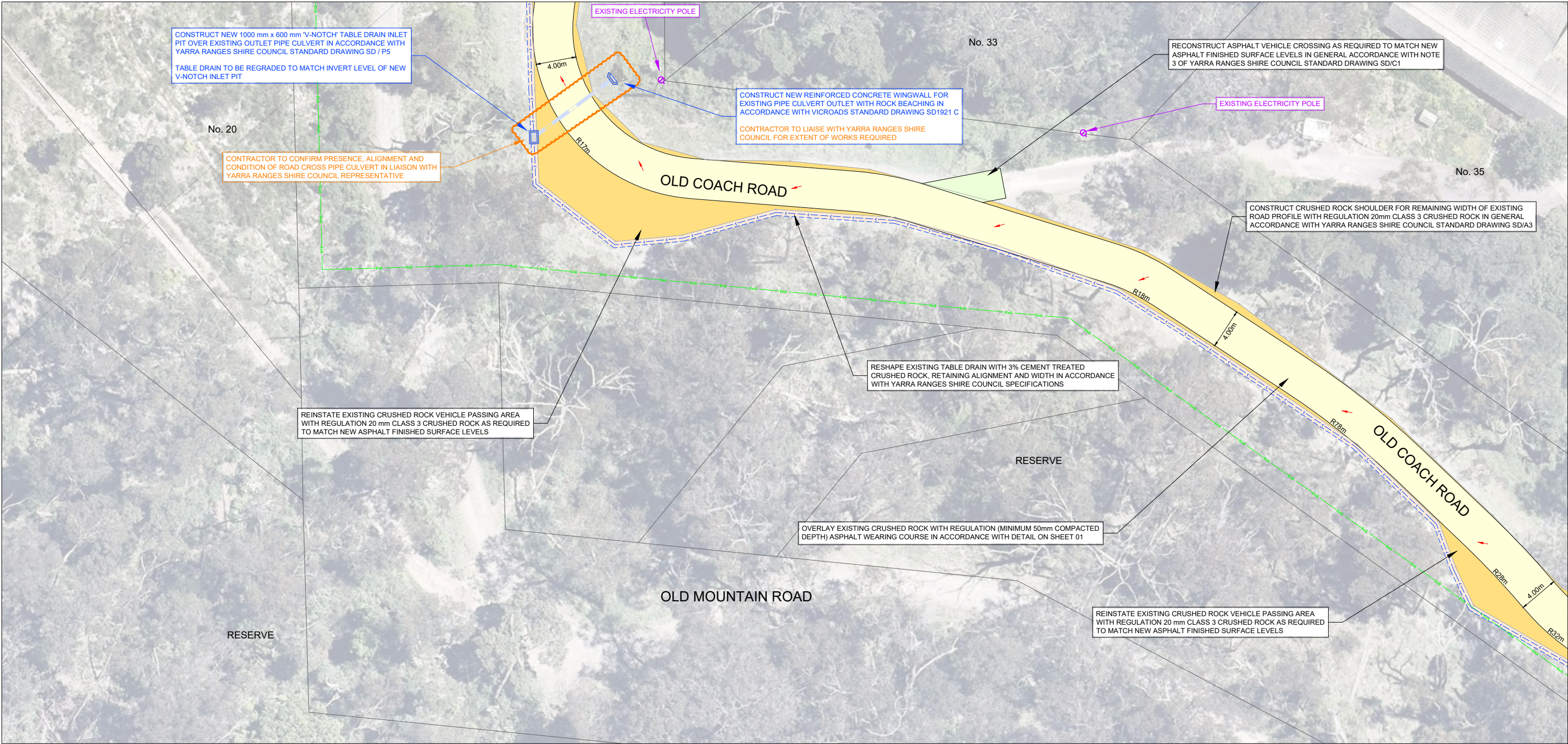
LEGEND

- ASPHALT OVERLAY WEARING COURSE - OVERLAY IN ACCORDANCE WITH DETAIL ON SHEET 01
- CRUSHED ROCK SHOULDER - REGULATION (MINIMUM 75mm COMPACTED DEPTH) SIZE 20mm CLASS 3 CRUSHED ROCK SHOULD BE CONSTRUCTED IN ACCORDANCE WITH YARRA RANGES SHIRE COUNCIL STANDARD DRAWING SD / A3
- CEMENT TREATED CRUSHED ROCK TABLE DRAIN - REGULATION (MINIMUM 100mm COMPACTED DEPTH) SIZE 20mm 3% CEMENT TREATED CLASS 3 CRUSHED ROCK
- CRUSHED ROCK VEHICLE CROSSING - REGULATION (MINIMUM 150mm COMPACTED DEPTH) SIZE 20mm CLASS 3 CRUSHED ROCK IN ACCORDANCE WITH YARRA RANGES SHIRE COUNCIL STANDARD DRAWING SD / C4
- ASPHALT VEHICLE CROSSING - 50mm COMPACTED DEPTH SIZE 14mm TYPE H ASPHALT ON 150mm CRUSHED ROCK IN ACCORDANCE WITH NOTE 3 OF YARRA RANGES SHIRE COUNCIL STANDARD DRAWING SD / C1
- CONCRETE VEHICLE CROSSING - 150mm THICK 32MPa CONCRETE ON 50mm COMPACTED DEPTH SIZE 20mm CLASS 3 CRUSHED ROCK IN GENERAL ACCORDANCE WITH SECTION A-A OF YARRA RANGES SHIRE COUNCIL STANDARD DRAWING SD / C2
- LAWN AREA TO BE REINSTATED WITH YARRA RANGES SHIRE COUNCIL APPROVED TOPSOIL AND GRASS SEED
- PROPOSED PAVEMENT GRADE
- EXISTING DRAINAGE PIPE
- NEW DRAINAGE PIT WITH PIT NUMBER AND PIPE
- TABLE DRAIN INVERT
- EXISTING GAS



WARNING
BEWARE OF UNDERGROUND SERVICES
THE LOCATION OF EXISTING UNDERGROUND SERVICES ARE APPROXIMATE ONLY AND THEIR EXACT POSITION SHOULD BE PROVEN ON SITE. NO GUARANTEE IS GIVEN THAT ALL EXISTING SERVICES ARE SHOWN.

CONTINUED ON SHEET 05



CONTINUED ON SHEET 07

GENERAL LAYOUT PLAN



01	CONCEPT DESIGN	24-08-2022
00	CONCEPT DESIGN	15-08-2022
VER	DESCRIPTION	DATE

CONSULTANT ENGINEER

PROCIVIL
CONSULTING ENGINEERING

Specialist Civil Engineering Design Consultants

Commitment | Communication | Collaboration

PROCIVIL CONSULTING PTY LTD
ABN 51 759 386 092
SUITE 20, 45-51 RINGWOOD ST, RINGWOOD VIC 3134
PO BOX 164, RINGWOOD VIC 3134
P: (03) 8644 6834
E: info@procivil.com.au
www.procivil.com.au

CIVIL ENGINEERING DESIGN
JUSTIN SIMS

TECHNICAL PEER REVIEW
KURT CHAMBERLAIN

REGISTERED & CHARTERED PROFESSIONAL ENGINEER
CHRIS PROCTOR

ORIENTATION

OR AS SHOWN

ORIGINAL SCALE & SHEET SIZE
AS SHOWN @ A1

HEIGHT DATUM
AHD

COORDINATE DATUM
MGA 2020 ZONE 55

SURVEY DATE
01-07-2022

AERIAL IMAGE DATE
28-11-2021

LOCAL GOVERNMENT AREA
SHIRE OF YARRA RANGES

CLIENT

CLIENT PROJECT MANAGER / CONTACT
GRANT MCCARTHY | YARRA RANGES SHIRE COUNCIL

CONCEPT DESIGN

ROAD AND DRAINAGE RECONSTRUCTION WORKS
OLD COACH ROAD, MONTROSE

GENERAL LAYOUT PLAN

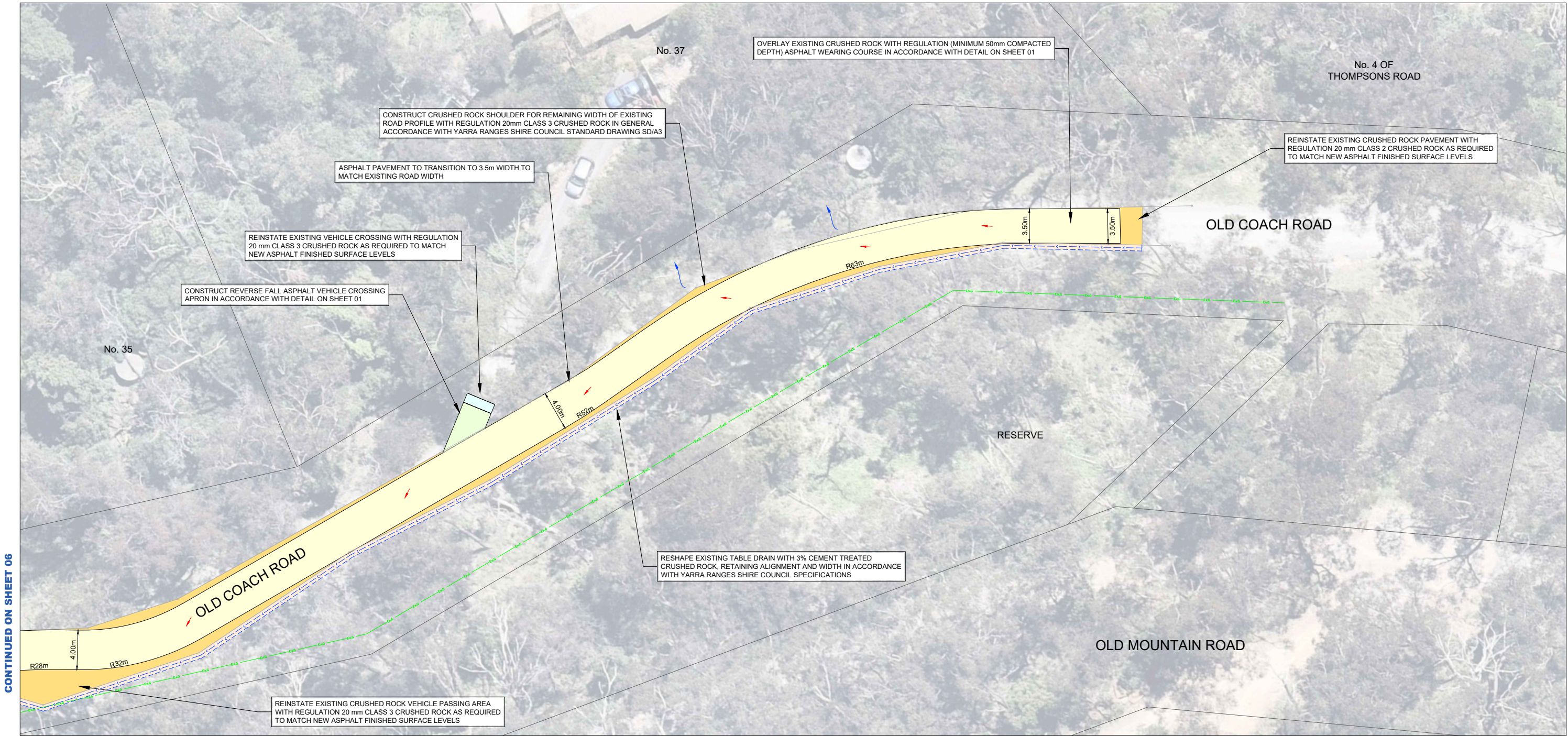
PROJECT No.	PC22012
SHEET No.	06 OF 07
VERSION	01
DWG No.	PC22012-06 - 01

LEGEND

- ASPHALT OVERLAY WEARING COURSE - OVERLAY IN ACCORDANCE WITH DETAIL ON SHEET 01
- CRUSHED ROCK SHOULDER - REGULATION (MINIMUM 75mm COMPACTED DEPTH) SIZE 20mm CLASS 3 CRUSHED ROCK SHOULD CONSTRUCTED IN ACCORDANCE WITH YARRA RANGES SHIRE COUNCIL STANDARD DRAWING SD / A3
- CEMENT TREATED CRUSHED ROCK TABLE DRAIN - REGULATION (MINIMUM 100mm COMPACTED DEPTH) SIZE 20mm 3% CEMENT TREATED CLASS 3 CRUSHED ROCK
- CRUSHED ROCK VEHICLE CROSSING - REGULATION (MINIMUM 150mm COMPACTED DEPTH) SIZE 20mm CLASS 3 CRUSHED ROCK IN ACCORDANCE WITH YARRA RANGES SHIRE COUNCIL STANDARD DRAWING SD / C4
- ASPHALT VEHICLE CROSSING - 50mm COMPACTED DEPTH SIZE 14mm TYPE H ASPHALT ON 150mm CRUSHED ROCK IN ACCORDANCE WITH NOTE 3 OF YARRA RANGES SHIRE COUNCIL STANDARD DRAWING SD / C1
- CONCRETE VEHICLE CROSSING - 150mm THICK 32MPa CONCRETE ON 50mm COMPACTED DEPTH SIZE 20mm CLASS 3 CRUSHED ROCK IN GENERAL ACCORDANCE WITH SECTION A-A OF YARRA RANGES SHIRE COUNCIL STANDARD DRAWING SD / C2
- LAWN AREA TO BE REINSTATED WITH YARRA RANGES SHIRE COUNCIL APPROVED TOPSOIL AND GRASS SEED
- PROPOSED PAVEMENT GRADE
- EXISTING DRAINAGE PIPE
- NEW DRAINAGE PIT WITH PIT NUMBER AND PIPE
- TABLE DRAIN INVERT
- EXISTING GAS



WARNING
BEWARE OF UNDERGROUND SERVICES
THE LOCATION OF EXISTING UNDERGROUND SERVICES ARE APPROXIMATE ONLY AND THEIR EXACT POSITION SHOULD BE PROVEN ON SITE. NO GUARANTEE IS GIVEN THAT ALL EXISTING SERVICES ARE SHOWN.



GENERAL LAYOUT PLAN



01	CONCEPT DESIGN	24-08-2022
00	CONCEPT DESIGN	15-08-2022
VER	DESCRIPTION	DATE

CONSULTANT ENGINEER

PROCIVIL
CONSULTING ENGINEERING

Specialist Civil Engineering Design Consultants

Commitment | Communication | Collaboration

PROCIVIL CONSULTING PTY LTD
ABN 51 759 386 092
SUITE 20, 45-51 RINGWOOD ST, RINGWOOD VIC 3134
PO BOX 164, RINGWOOD VIC 3134
P: (03) 8644 6834
E: info@procivil.com.au
www.procivil.com.au

CIVIL ENGINEERING DESIGN
JUSTIN SIMS

TECHNICAL PEER REVIEW
KURT CHAMBERLAIN

REGISTERED & CHARTERED PROFESSIONAL ENGINEER
CHRIS PROCTOR

ORIENTATION

ORIGINAL SCALE & SHEET SIZE
AS SHOWN @ A1

HEIGHT DATUM
AHD

COORDINATE DATUM
MGA 2020 ZONE 55

SURVEY DATE
01-07-2022

AERIAL IMAGE DATE
28-11-2021

LOCAL GOVERNMENT AREA
SHIRE OF YARRA RANGES

CLIENT

CLIENT PROJECT MANAGER / CONTACT
GRANT MCCARTHY | YARRA RANGES SHIRE COUNCIL

CONCEPT DESIGN

ROAD AND DRAINAGE RECONSTRUCTION WORKS
OLD COACH ROAD, MONTROSE

GENERAL LAYOUT PLAN

PROJECT No.	PC22012
SHEET No.	07 OF 07
VERSION	01
DWG No.	PC22012-07 - 01