

ROAD AND DRAINAGE RECONSTRUCTION WORKS

HENRY STREET, EVERARD GROVE AND LESTER STREET, WOORI YALLOCK



WARNING
BEWARE OF UNDERGROUND SERVICES.
THE LOCATION OF EXISTING UNDERGROUND SERVICES ARE APPROXIMATE ONLY AND THEIR EXACT POSITION SHOULD BE PROVEN ON SITE. NO GUARANTEE IS GIVEN THAT ALL EXISTING SERVICES ARE SHOWN.

DRAWING INDEX

SHEET No.	TITLE
01	TITLE SHEET - LOCALITY PLAN, GENERAL NOTES, DRAWING INDEX & DETAILS
02	OVERALL PLAN
03	GENERAL LAYOUT PLAN
04	GENERAL LAYOUT PLAN
05	GENERAL LAYOUT PLAN
06	GENERAL LAYOUT PLAN
07	GENERAL LAYOUT PLAN
08	GENERAL LAYOUT PLAN
09	GENERAL LAYOUT PLAN
10	GENERAL LAYOUT PLAN
11	GENERAL LAYOUT PLAN
12	GENERAL LAYOUT PLAN
13	SECTIONS A-A, B-B, C-C & D-D
14	SECTIONS E-E, F-F, G-G & H-H
15	SECTIONS J-J, K-K & L-L
16	SWEPT PATH ANALYSIS PLAN - EVERARD GROVE - YRSC WASTE VEHICLE
17	SWEPT PATH ANALYSIS PLAN - EVERARD GROVE - B85 CAR
18	SWEPT PATH ANALYSIS PLAN - LESTER STREET - YRSC WASTE VEHICLE - 3 POINT TURN
19	SWEPT PATH ANALYSIS PLAN - LESTER STREET - B85 CAR

GENERAL

- THE CONTRACTOR IS TO VERIFY THE LOCATION AND DEPTH OF ALL UTILITY SERVICES PRIOR TO CARRYING OUT WORKS BY TELEPHONING 1100 "DIAL BEFORE YOU DIG".
- DISCREPANCIES BETWEEN PLANS AND EXISTING CONDITIONS ARE TO BE REPORTED IMMEDIATELY TO THE COUNCIL'S SUPERVISING ENGINEER.
- ALL SURPLUS EXCAVATED MATERIAL REMAINS THE PROPERTY OF THE CONTRACTOR UNLESS SPECIFIED OTHERWISE OR ADVISED BY THE COUNCIL'S SUPERVISING ENGINEER.
- "REMOVE" SHALL MEAN REMOVE OFF-SITE AND DISPOSE OF AT AN APPROVED DISPOSAL SITE AT THE CONTRACTOR'S EXPENSE, UNLESS SPECIFIED OTHERWISE.
- ON COMPLETION OF CONSTRUCTION ALL WORK AREA ARE TO BE CLEANED UP & REINSTATED TO THE SATISFACTION OF THE COUNCIL'S SUPERVISING ENGINEER.

PAVEMENT

- ROAD CROSSFALL TO BE 1 in 36 FALLING TOWARDS THE TABLE DRAIN OR KERB AND CHANNEL UNLESS SPECIFIED OTHERWISE.
- AT NEW FILL AREAS THE TOPSOIL SHALL BE STRIPPED AND FILLING MATERIAL PLACED IN 150mm THICK LAYER AND COMPACTED TO 95% A.A.S.H.O. COMPACTION TEST, THE TOPSOIL IS THEN RE-SPREAD ON THE BATTER AREAS.
- NEW CONCRETE FOOTPATH PAVING TO BE 32 MPa STRENGTH.
- TACTILE GROUND SURFACE INDICATOR (TGSi) PAVERS ARE TO BE 300mm x 300mm x 40mm PRE-CAST CONCRETE PAVERS AND SHALL HAVE A MINIMUM LUMINANCE CONTRAST OF 30% COMPARED TO THE AMOUNT OF LIGHT REFLECTED FROM THE ADJACENT SURFACE.

ROADSIDE

- EXISTING DRIVEWAY ENTRANCES TO BE REINSTATED AND SEALED FOR 1.0m FROM EDGE OF SEAL WITH 50mm COMPACTED DEPTH 10mm TYPE N ASPHALT ON A BASE OF 100mm COMPACTED DEPTH CLASS 2 FINE CRUSHED ROCK.
- EXISTING DRIVEWAYS ARE TO BE REINSTATED FROM BACK OF KERB OR EDGE OF SEAL AT A MAXIMUM GRADE OF 1 in 8 FOR 2.0m THEN 1 in 4 THEREAFTER WITH A TRANSITION OF 1 in 6 FOR 2.0m IS PREFERRED WHERE POSSIBLE AS PER:
 - GRAVEL DRIVEWAY WITH 50mm COMPACTED DEPTH OF 3% CEMENT TREATED CRUSHED ROCK UNLESS SPECIFIED OTHERWISE.
 - ASPHALT DRIVEWAYS WITH 50mm COMPACTED DEPTH 10mm NOMINAL SIZE ASPHALT ON A BASE OF 100mm COMPACTED DEPTH CLASS 2 FINE CRUSHED ROCK.
 - CONCRETE DRIVEWAYS WITH 150mm DEPTH CONCRETE PAVING ON A BASE OF 50mm COMPACTED DEPTH CLASS 2 FINE CRUSHED ROCK.
 - BRICK PAVER DRIVEWAYS WITH SUITABLE HEAVY DUTY BRICK PAVERS ON 30mm OF BEDDING SAND ON A BASE OF 100mm COMPACTED DEPTH CLASS 2 FINE CRUSHED ROCK.
- TABLE DRAIN TO BE CLEANED, REDEFINED OR DEFINED AS NECESSARY ALONG THE HIGH SIDE OF THE ROADWAY, REFER TO TYPE OF SECTION FOR TABLE DRAIN PROFILE, MINIMUM DEPTH 300mm.

DRAINAGE

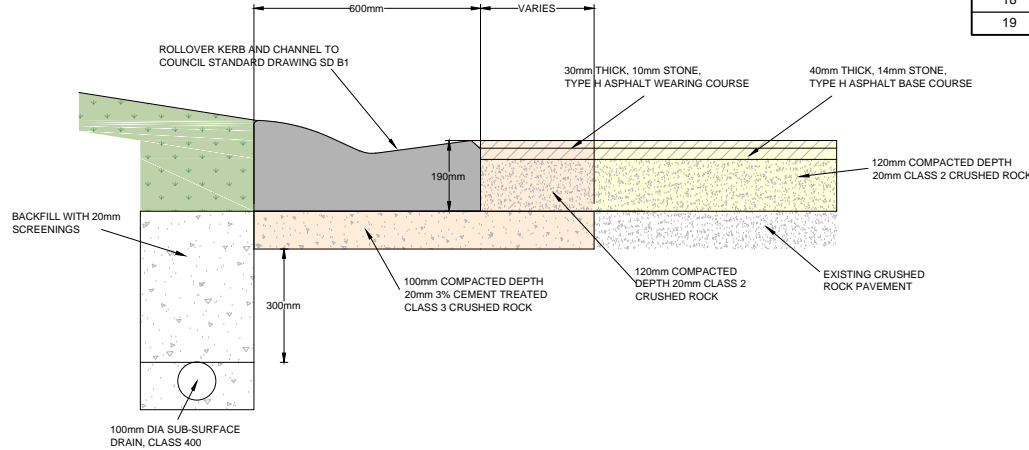
- ALL DRAINAGE PIPES TO BE CLASS 2 RUBBER RING JOINTED SPIGOT AND SOCKET UNLESS SPECIFIED OTHERWISE.
- ALL PROPERTY STORM WATER OUTLETS WITHIN 3.0m OF THE NEW DRAIN OR KERB ARE TO BE CONNECTED TO UNDERGROUND DRAINAGE PIPES WHERE AVAILABLE, OR BACK OF KERB WHERE UNDERGROUND DRAINAGE PIPES ARE NOT AVAILABLE.
- DRAINAGE PITS GREATER THAN 1.0m IN DEPTH TO BE PROVIDED WITH STEP IRONS AT 300mm CENTRES VERTICALLY.
- A.G. DRAIN PLACED BEHIND KERB AND CHANNEL AS SHOWN ON PLAN IF WITHIN 3.0m OF ANY TREE EXCAVATION TO BE HAND DUG OR BORED TO MINIMISE ROOT DAMAGE OF TREE.

VEGETATION

- TREE PROTECTION ZONES (TPZ) HAVE BEEN SHOWN FOR ALL TREES LOCATED CLOSE TO THE WORKS AREA. WORKS AND ANY STOCKPILES OF CONSTRUCTION EQUIPMENT AND MATERIAL ARE TO BE CONTAINED OUTSIDE THE TPZ UNLESS SPECIFICALLY APPROVED BY THIS PLAN. PRIOR APPROVAL MUST BE SOUGHT FOR ANY WORKS NOT SPECIFIED AND APPROVED BY THIS PLAN THAT ARE TO BE CONDUCTED WITHIN THE TPZ OF ANY TREE.
- ONLY TREES SHOWN TO BE REMOVED ON THIS PLAN CAN BE REMOVED. ANY DAMAGE TO THE BARK, BRANCHES, TRUNKS OR ROOTS OF OTHER TREES SHOULD BE IMMEDIATELY REPORTED TO COUNCIL'S CONSTRUCTION SURVEILLANCE OFFICER BEFORE ANY WORKS CONTINUE AROUND THE SUBJECT VEGETATION.

ANCILLARY

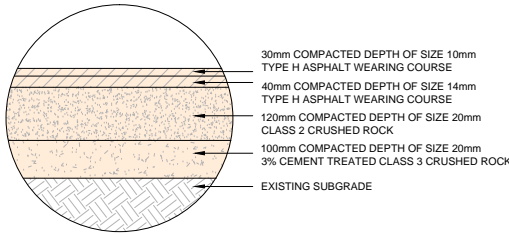
- ALL EXISTING SIGNS AND POSTS REMAIN THE PROPERTY OF THE COUNCIL.



ROLLOVER KERB AND CHANNEL DETAIL

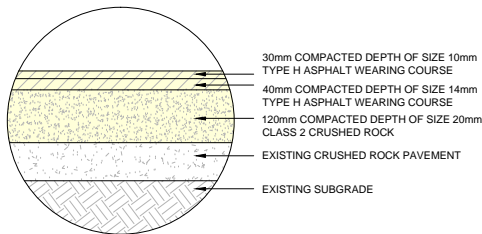
GENERALLY IN ACCORDANCE WITH YARRA RANGES SHIRE COUNCIL DRAWING SD / D5

NOT TO SCALE



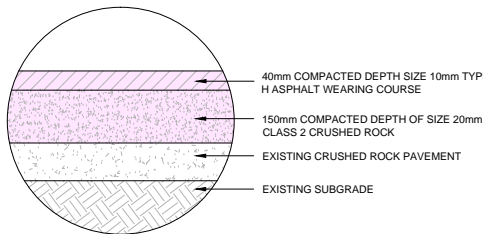
FULL DEPTH PAVEMENT DETAIL

NOT TO SCALE



OVERLAY EXISTING PAVEMENT DETAIL

NOT TO SCALE



MINOR ROAD OVERLAY EXISTING PAVEMENT DETAIL

NOT TO SCALE

VER	DESCRIPTION	DATE
03	FUNCTIONAL DESIGN - ISSUED FOR REVIEW	25-08-2022
02	FUNCTIONAL DESIGN - ISSUED FOR REVIEW	09-08-2022
01	FUNCTIONAL DESIGN - ISSUED FOR REVIEW	20-05-2022
00	FUNCTIONAL DESIGN - ISSUED FOR REVIEW	26-04-2022

CONSULTANT ENGINEER

PROCIVIL
CONSULTING ENGINEERING

Specialist Civil Engineering Design Consultants

Commitment | Communication | Collaboration

PROCIVIL CONSULTING PTY LTD
ABN 51 759 386 082
SUITE 20, 45-51 RINGWOOD ST, RINGWOOD VIC 3134
PO BOX 164, RINGWOOD VIC 3134
P: (03) 8644 6834
E: info@procivil.com.au
www.procivil.com.au

CIVIL ENGINEERING DESIGN
RACHAEL MURRAY

TECHNICAL PEER REVIEW
KURT CHAMBERLAIN

REGISTERED & CHARTERED PROFESSIONAL ENGINEER
CHRIS PROCTOR

ORIENTATION

OR AS SHOWN

ORIGINAL SCALE & SHEET SIZE
AS SHOWN @ A1

HEIGHT DATUM
AHD

COORDINATE DATUM
MGA 94 ZONE 55

SURVEY DATE
06-09-2021

AERIAL IMAGE DATE
12-12-2020

LOCAL GOVERNMENT AREA
SHIRE OF YARRA RANGES

CLIENT

Yarra Ranges Council

CLIENT PROJECT MANAGER / CONTACT
NATALIE SURSOCK | YARRA RANGES SHIRE COUNCIL

FUNCTIONAL DESIGN

ROAD AND DRAINAGE RECONSTRUCTION WORKS

HENRY STREET, EVERARD GROVE AND LESTER STREET, WOORI YALLOCK

TITLE SHEET - LOCALITY PLAN, GENERAL NOTES & DRAWING INDEX

PROJECT No.
PC21020

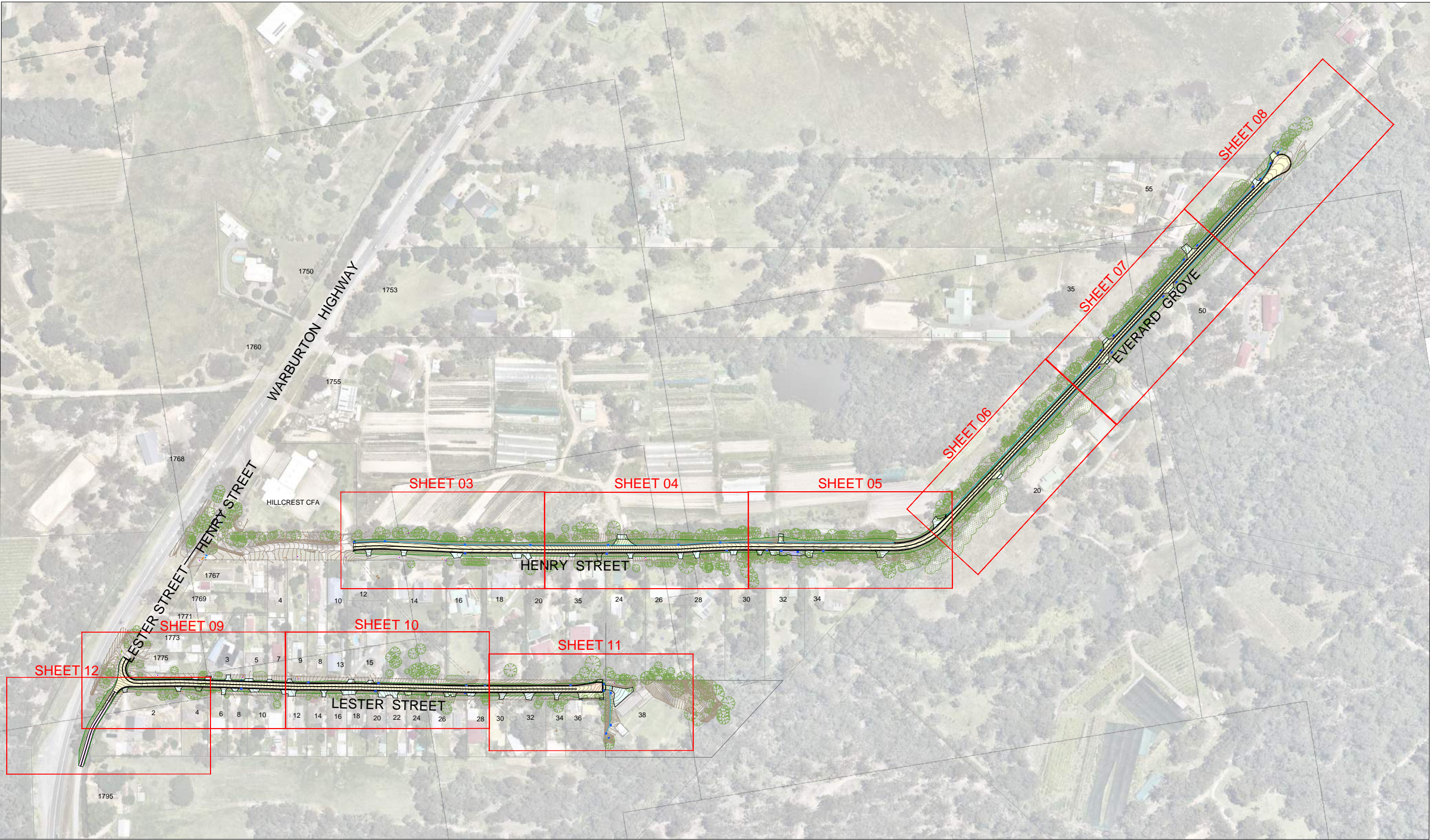
SHEET No.
01 OF 19

VERSION
03

DWG No.
PC21020 -01 - 03



WARNING
BEWARE OF UNDERGROUND SERVICES
THE LOCATION OF EXISTING UNDERGROUND SERVICES ARE APPROXIMATE ONLY AND THEIR EXACT POSITION SHOULD BE PROVEN ON SITE. NO GUARANTEE IS GIVEN THAT ALL EXISTING SERVICES ARE SHOWN.



OVERALL PLAN



VER	DESCRIPTION	DATE
03	FUNCTIONAL DESIGN - ISSUED FOR REVIEW	25-08-2022
02	FUNCTIONAL DESIGN - ISSUED FOR REVIEW	09-08-2022
01	FUNCTIONAL DESIGN - ISSUED FOR REVIEW	20-05-2022
00	FUNCTIONAL DESIGN - ISSUED FOR REVIEW	26-04-2022

CONSULTANT ENGINEER

PROCIVIL
CONSULTING ENGINEERING

Specialist Civil Engineering Design Consultants

Commitment | Communication | Collaboration

PROCIVIL CONSULTING PTY LTD
ABN 51 759 386 092
SUITE 20, 45-51 RINGWOOD ST, RINGWOOD VIC 3114
PO BOX 164, RINGWOOD VIC 3114
P: (03) 8644 6834
E: info@procivil.com.au
www.procivil.com.au

CIVIL ENGINEERING DESIGN RACHAEL MURRAY	TECHNICAL PEER REVIEW KURT CHAMBERLAIN
REGISTERED & CHARTERED PROFESSIONAL ENGINEER CHRIS PROCTOR	

ORIENTATION

OR AS SHOWN

ORIGINAL SCALE & SHEET SIZE
AS SHOWN @ A1

HEIGHT DATUM
AHD

COORDINATE DATUM
MGA 94 ZONE 55

SURVEY DATE
06-09-2021

AERIAL IMAGE DATE
12-12-2020

LOCAL GOVERNMENT AREA
SHIRE OF YARRA RANGES

CLIENT

CLIENT PROJECT MANAGER / CONTACT
NATALIE SURSOCK | YARRA RANGES SHIRE COUNCIL

FUNCTIONAL DESIGN

ROAD AND DRAINAGE RECONSTRUCTION WORKS

HENRY STREET, EVERARD GROVE AND LESTER STREET,
WOORI YALLOCK

OVERALL PLAN

PROJECT No.
PC21020

SHEET No.
02 OF 19

VERSION
03

DWG No.
PC21020 -02 - 03

LEGEND

- OVERLAY EXISTING PAVEMENT - 190mm THICK FLEXIBLE PAVEMENT IN ACCORDANCE WITH DETAIL ON SHEET 01

FULL DEPTH PAVEMENT - 290mm THICK FLEXIBLE PAVEMENT IN ACCORDANCE WITH DETAIL ON SHEET 01

40mm THICK ASPHALT PAVEMENT - CONSTRUCTED IN ACCORDANCE WITH YARRA RANGES SHIRE COUNCIL SPECIFICATIONS

50mm THICK ASPHALT VEHICLE CROSSING - CONSTRUCTED IN GENERAL ACCORDANCE WITH YARRA RANGES SHIRE COUNCIL STANDARD DRAWING SD / C2

100mm MINIMUM COMPACTED DEPTH CLASS 2 CRUSHED ROCK VEHICLE CROSSING - CONSTRUCTED IN GENERAL ACCORDANCE WITH YARRA RANGES SHIRE COUNCIL STANDARD DRAWING SD / C2

150mm MINIMUM COMPACTED DEPTH 3% CEMENT TREATED 20mm CLASS 2 CRUSHED ROCK - CONSTRUCTED IN ACCORDANCE WITH YARRA RANGES SHIRE COUNCIL SPECIFICATIONS

150mm COMPACTED DEPTH CLASS 2 CRUSHED ROCK SHOULDER - CONSTRUCTED IN ACCORDANCE WITH YARRA RANGES SHIRE COUNCIL SPECIFICATIONS

LAWN AREA TO BE REINSTATED WITH YARRA RANGES SHIRE COUNCIL APPROVED TOPSOIL AND GRASS SEED

NEW CONCRETE KERB AND CHANNEL IN ACCORDANCE WITH YARRA RANGES SHIRE COUNCIL STANDARD DRAWING SD / B1

PROPOSED PAVEMENT GRADE

NEW DRAINAGE PIT WITH PIT NUMBER AND PIPE

DIRECTION OF CHANNEL FLOW

SWALE INVERT

SUBSURFACE DRAINAGE IN ACCORDANCE WITH YARRA RANGES SHIRE COUNCIL STANDARD DRAWING SD / D4

PAVEMENT LINE MARKING

EXISTING WATER

EXISTING GAS

EXISTING SEWER

EXISTING TELECOMMUNICATIONS

EXISTING UNDERGROUND ELECTRICITY

EXISTING CONTOUR MAJOR (1.0m)

EXISTING CONTOUR MINOR (0.2m)

EXISTING DRAINAGE PIPE

FILL BATTER EXTENT

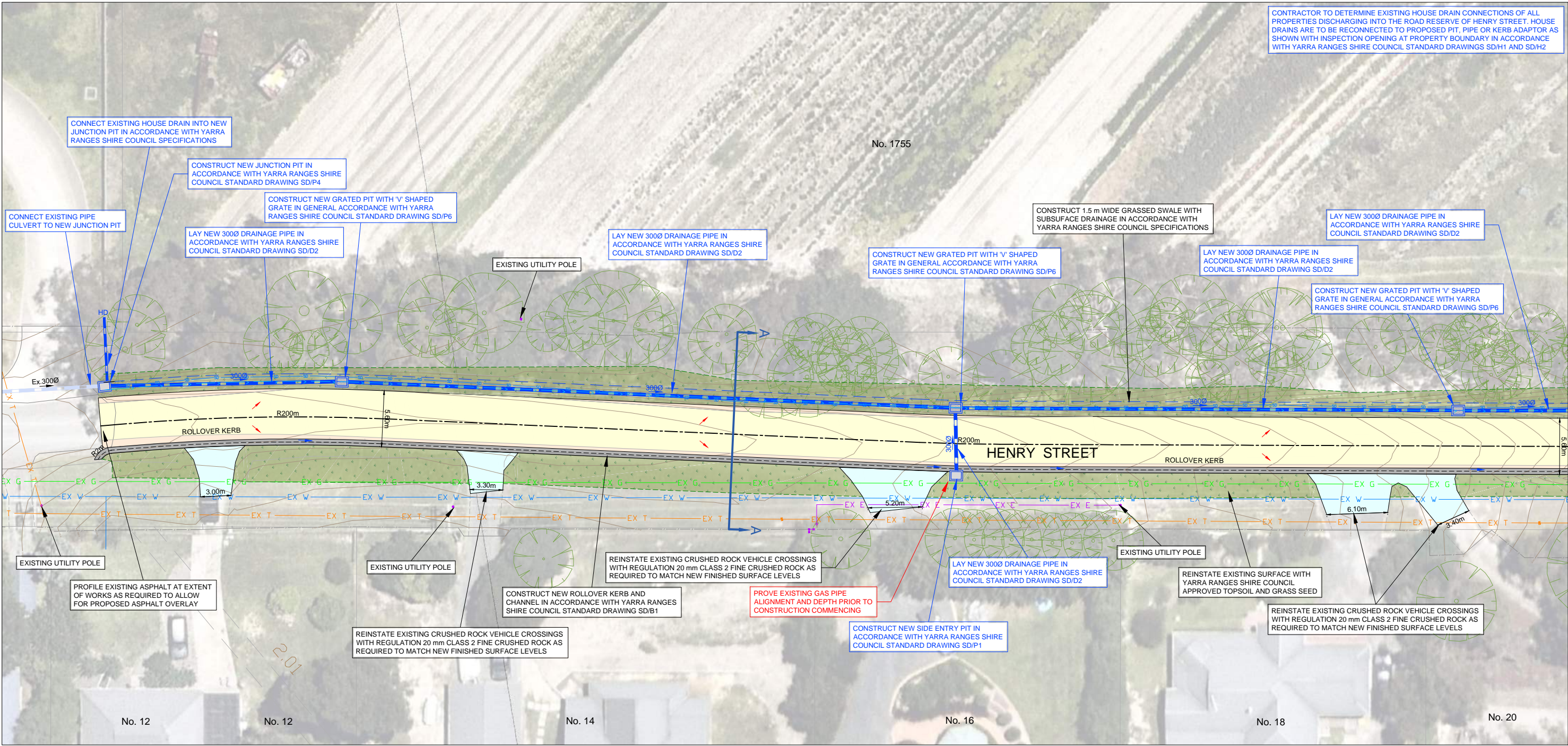
CUT BATTER EXTENT

REMOVE EXISTING DRAINAGE PIPE

EXISTING TREE FOR REMOVAL



WARNING
BEWARE OF UNDERGROUND SERVICES
THE LOCATION OF EXISTING UNDERGROUND SERVICES ARE APPROXIMATE ONLY AND THEIR EXACT POSITION SHOULD BE PROVEN ON SITE. NO GUARANTEE IS GIVEN THAT ALL EXISTING SERVICES ARE SHOWN.



GENERAL LAYOUT PLAN



VER	DESCRIPTION	DATE
03	FUNCTIONAL DESIGN - ISSUED FOR REVIEW	25-08-2022
02	FUNCTIONAL DESIGN - ISSUED FOR REVIEW	09-08-2022
01	FUNCTIONAL DESIGN - ISSUED FOR REVIEW	20-05-2022
00	FUNCTIONAL DESIGN - ISSUED FOR REVIEW	26-04-2022

CONSULTANT ENGINEER

PROCIVIL
CONSULTING ENGINEERING

Specialist Civil Engineering Design Consultants

Commitment | Communication | Collaboration

PROCIVIL CONSULTING PTY LTD
ABN 51 759 386 082
SUITE 20, 45-51 RINGWOOD ST, RINGWOOD VIC 3134
PO BOX 164, RINGWOOD VIC 3134
P: (03) 8644 6834
E: info@procivil.com.au
www.procivil.com.au

CIVIL ENGINEERING DESIGN
RACHAEL MURRAY

TECHNICAL PEER REVIEW
KURT CHAMBERLAIN

REGISTERED & CHARTERED PROFESSIONAL ENGINEER
CHRIS PROCTOR



ORIGINAL SCALE & SHEET SIZE
AS SHOWN @ A1

HEIGHT DATUM
AHD

COORDINATE DATUM
MGA 94 ZONE 55

SURVEY DATE
06-09-2021

AERIAL IMAGE DATE
12-12-2020

LOCAL GOVERNMENT AREA
SHIRE OF YARRA RANGES

CLIENT

CLIENT PROJECT MANAGER / CONTACT
NATALIE SURSOCK | YARRA RANGES SHIRE COUNCIL

FUNCTIONAL DESIGN

ROAD AND DRAINAGE RECONSTRUCTION WORKS

HENRY STREET, EVERARD GROVE AND LESTER STREET,
WOORI YALLOCK

GENERAL LAYOUT PLAN

PROJECT No.
PC21020

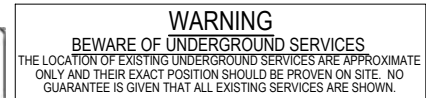
SHEET No.
03 OF 19

VERSION
03

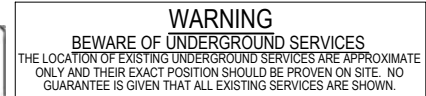
DWG No.
PC21020 -03 - 03

CONTINUED ON SHEET 04

	OVERLAY EXISTING PAVEMENT - 190mm THICK FLEXIBLE PAVEMENT IN ACCORDANCE WITH DETAIL ON SHEET 01		150mm COMPACTED DEPTH CLASS 2 CRUSHED ROCK SHOULDER - CONSTRUCTED IN ACCORDANCE WITH YARRA RANGES SHIRE COUNCIL SPECIFICATIONS		PAVEMENT LINE MARKING
	FULL DEPTH PAVEMENT - 290mm THICK FLEXIBLE PAVEMENT IN ACCORDANCE WITH DETAIL ON SHEET 01		LAWN AREA TO BE REINSTATED WITH YARRA RANGES SHIRE COUNCIL APPROVED TOPSOIL AND GRASS SEED		EXISTING WATER
	40mm THICK ASPHALT PAVEMENT - CONSTRUCTED IN ACCORDANCE WITH YARRA RANGES SHIRE COUNCIL SPECIFICATIONS		NEW CONCRETE KERB AND CHANNEL IN ACCORDANCE WITH YARRA RANGES SHIRE COUNCIL STANDARD DRAWING SD / B1		EXISTING SEWER
	50mm THICK ASPHALT VEHICLE CROSSING - CONSTRUCTED IN GENERAL ACCORDANCE WITH YARRA RANGES SHIRE COUNCIL STANDARD DRAWING SD / C2		PROPOSED PAVEMENT GRADE		EXISTING TELECOMMUNICATIONS
	100mm MINIMUM COMPACTED DEPTH CLASS 2 CRUSHED ROCK VEHICLE CROSSING - CONSTRUCTED IN GENERAL ACCORDANCE WITH YARRA RANGES SHIRE COUNCIL STANDARD DRAWING SD / C2		NEW DRAINAGE PIT WITH PIT NUMBER AND PIPE		EXISTING CONTOUR MAJOR (1.0m)
	150mm MINIMUM COMPACTED DEPTH 3% CEMENT TREATED 20mm CLASS 2 CRUSHED ROCK - CONSTRUCTED IN ACCORDANCE WITH YARRA RANGES SHIRE COUNCIL SPECIFICATIONS		DIRECTION OF CHANNEL FLOW		EXISTING CONTOUR MINOR (0.2m)
			SWALE INVERT		EXISTING DRAINAGE PIPE
			SUBSURFACE DRAINAGE IN ACCORDANCE WITH YARRA RANGES SHIRE COUNCIL STANDARD DRAWING SD / D4		FILL BATTER EXTENT
					CUT BATTER EXTENT
					REMOVE EXISTING DRAINAGE PIPE
					EXISTING TREE FOR REMOVAL

[illegible]

	OVERLAY EXISTING PAVEMENT - 190mm THICK FLEXIBLE PAVEMENT IN ACCORDANCE WITH DETAIL ON SHEET 01		150mm COMPACTED DEPTH CLASS 2 CRUSHED ROCK SHOULDER - CONSTRUCTED IN ACCORDANCE WITH YARRA RANGES SHIRE COUNCIL SPECIFICATIONS		PAVEMENT LINE MARKING
	FULL DEPTH PAVEMENT - 290mm THICK FLEXIBLE PAVEMENT IN ACCORDANCE WITH DETAIL ON SHEET 01		LAWN AREA TO BE REINSTITUTED WITH YARRA RANGES SHIRE COUNCIL APPROVED TOPSOIL AND GRASS SEED		EXISTING WATER
	40mm THICK ASPHALT PAVEMENT - CONSTRUCTED IN ACCORDANCE WITH YARRA RANGES SHIRE COUNCIL SPECIFICATIONS		NEW CONCRETE KERB AND CHANNEL IN ACCORDANCE WITH YARRA RANGES SHIRE COUNCIL STANDARD DRAWING SD / B1		EXISTING GAS
	50mm THICK ASPHALT VEHICLE CROSSING - CONSTRUCTED IN GENERAL ACCORDANCE WITH YARRA RANGES SHIRE COUNCIL STANDARD DRAWING SD / C2		PROPOSED PAVEMENT GRADE		EXISTING SEWER
	100mm MINIMUM COMPACTED DEPTH CLASS 2 CRUSHED ROCK VEHICLE CROSSING - CONSTRUCTED IN GENERAL ACCORDANCE WITH YARRA RANGES SHIRE COUNCIL STANDARD DRAWING SD / C2		NEW DRAINAGE PIT WITH PIT NUMBER AND PIPE		EXISTING TELECOMMUNICATIONS
	150mm MINIMUM COMPACTED DEPTH 3% CEMENT TREATED 20mm CLASS 2 CRUSHED ROCK - CONSTRUCTED IN ACCORDANCE WITH YARRA RANGES SHIRE COUNCIL SPECIFICATIONS		DIRECTION OF CHANNEL FLOW		EXISTING UNDERGROUND ELECTRICITY
			SWALE INVERT		EXISTING CONTOUR MAJOR (1.0m)
			SUBSURFACE DRAINAGE IN ACCORDANCE WITH YARRA RANGES SHIRE COUNCIL STANDARD DRAWING SD / D4		EXISTING CONTOUR MINOR (0.2m)
					EXISTING DRAINAGE PIPE
					FILL BATTER EXTENT
					CUT BATTER EXTENT
					REMOVE EXISTING DRAINAGE PIPE
					EXISTING TREE FOR REMOVAL



CONTRACTOR TO DETERMINE EXISTING HOUSE DRAIN CONNECTIONS OF ALL PROPERTIES DISCHARGING INTO THE ROAD RESERVE OF HENRY STREET. HOUSE DRAINS ARE TO BE RECONNECTED TO PROPOSED PIT, PIPE OR KERB ADAPTOR AS SHOWN WITH INSPECTION OPENING AT PROPERTY BOUNDARY IN ACCORDANCE WITH YARRA RANGES SHIRE COUNCIL STANDARD DRAWINGS SD/H1 AND SD/H2

CONTINUED ON SHEET 06

[illegible]

LEGEND

- OVERLAY EXISTING PAVEMENT - 190mm THICK FLEXIBLE PAVEMENT IN ACCORDANCE WITH DETAIL ON SHEET 01

FULL DEPTH PAVEMENT - 290mm THICK FLEXIBLE PAVEMENT IN ACCORDANCE WITH DETAIL ON SHEET 01

40mm THICK ASPHALT PAVEMENT - CONSTRUCTED IN ACCORDANCE WITH YARRA RANGES SHIRE COUNCIL SPECIFICATIONS

50mm THICK ASPHALT VEHICLE CROSSING - CONSTRUCTED IN GENERAL ACCORDANCE WITH YARRA RANGES SHIRE COUNCIL STANDARD DRAWING SD / C2

100mm MINIMUM COMPACTED DEPTH CLASS 2 CRUSHED ROCK VEHICLE CROSSING - CONSTRUCTED IN GENERAL ACCORDANCE WITH YARRA RANGES SHIRE COUNCIL STANDARD DRAWING SD / C2

150mm MINIMUM COMPACTED DEPTH 3% CEMENT TREATED 20mm CLASS 2 CRUSHED ROCK - CONSTRUCTED IN ACCORDANCE WITH YARRA RANGES SHIRE COUNCIL SPECIFICATIONS
- 150mm COMPACTED DEPTH CLASS 2 CRUSHED ROCK SHOULDER - CONSTRUCTED IN ACCORDANCE WITH YARRA RANGES SHIRE COUNCIL SPECIFICATIONS

LAWN AREA TO BE REINSTATED WITH YARRA RANGES SHIRE COUNCIL APPROVED TOPSOIL AND GRASS SEED

NEW CONCRETE KERB AND CHANNEL IN ACCORDANCE WITH YARRA RANGES SHIRE COUNCIL STANDARD DRAWING SD / B1

PROPOSED PAVEMENT GRADE

NEW DRAINAGE PIT WITH PIT NUMBER AND PIPE

DIRECTION OF CHANNEL FLOW

SWALE INVERT

SUBSURFACE DRAINAGE IN ACCORDANCE WITH YARRA RANGES SHIRE COUNCIL STANDARD DRAWING SD / D4
- PAVEMENT LINE MARKING

EXISTING WATER

EXISTING GAS

EXISTING SEWER

EXISTING TELECOMMUNICATIONS

EXISTING UNDERGROUND ELECTRICITY

EXISTING CONTOUR MAJOR (1.0m)

EXISTING CONTOUR MINOR (0.2m)

EXISTING DRAINAGE PIPE

FILL BATTER EXTENT

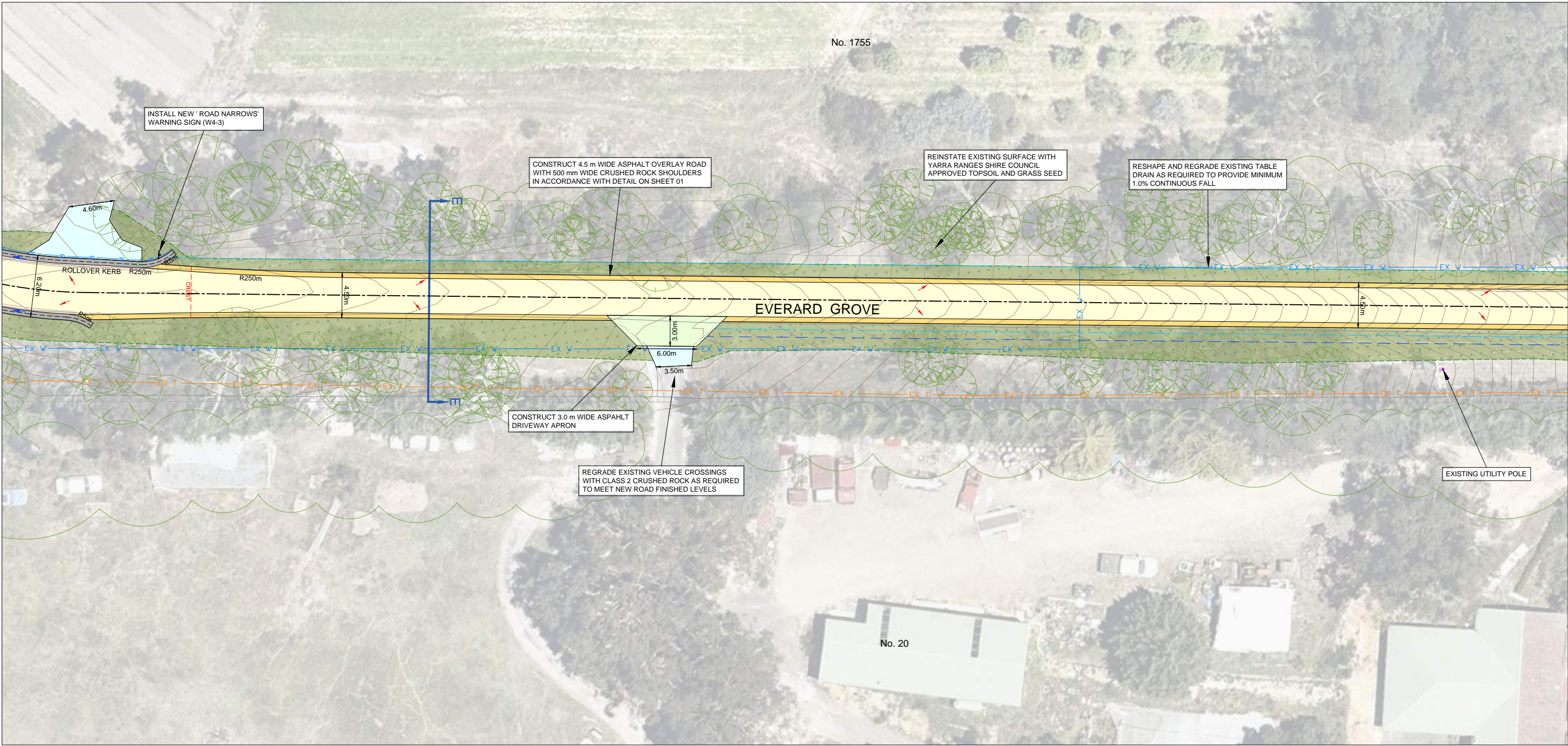
CUT BATTER EXTENT

REMOVE EXISTING DRAINAGE PIPE

EXISTING TREE FOR REMOVAL



WARNING
BEWARE OF UNDERGROUND SERVICES.
THE LOCATION OF EXISTING UNDERGROUND SERVICES ARE APPROXIMATE ONLY AND THEIR EXACT POSITION SHOULD BE PROVEN ON SITE. NO GUARANTEE IS GIVEN THAT ALL EXISTING SERVICES ARE SHOWN.



GENERAL LAYOUT PLAN



VER	DESCRIPTION	DATE
03	FUNCTIONAL DESIGN - ISSUED FOR REVIEW	25-08-2022
02	FUNCTIONAL DESIGN - ISSUED FOR REVIEW	09-08-2022
01	FUNCTIONAL DESIGN - ISSUED FOR REVIEW	20-05-2022
00	FUNCTIONAL DESIGN - ISSUED FOR REVIEW	26-04-2022

CONSULTANT ENGINEER

PROCIVIL

CONSULTING ENGINEERING

Specialist Civil Engineering Design Consultants

Commitment | Communication | Collaboration

PROCIVIL CONSULTING PTY LTD

ABN 51 759 386 082

SUITE 20, 45-51 RINGWOOD ST, RINGWOOD VIC 3134

PO BOX 164, RINGWOOD VIC 3134

P: (03) 8644 6834

E: info@procivil.com.au

www.procivil.com.au

CIVIL ENGINEERING DESIGN

RACHAEL MURRAY

TECHNICAL PEER REVIEW

KURT CHAMBERLAIN

REGISTERED & CHARTERED PROFESSIONAL ENGINEER

CHRIS PROCTOR

ORIENTATION

OR AS SHOWN

ORIGINAL SCALE & SHEET SIZE

AS SHOWN @ A1

HEIGHT DATUM

AHD

COORDINATE DATUM

MGA 94 ZONE 55

SURVEY DATE

06-09-2021

AERIAL IMAGE DATE

12-12-2020

LOCAL GOVERNMENT AREA

SHIRE OF YARRA RANGES

CLIENT

Yarra Ranges Council

CLIENT PROJECT MANAGER / CONTACT

NATALIE SURSOK | YARRA RANGES SHIRE COUNCIL

FUNCTIONAL DESIGN

ROAD AND DRAINAGE RECONSTRUCTION WORKS

HENRY STREET, EVERARD GROVE AND LESTER STREET,

WOORI YALLOCK

GENERAL LAYOUT PLAN

PROJECT No.

PC21020

SHEET No.

06 OF 19

VERSION

03

DWG No.

PC21020 -06 - 03

LEGEND

- OVERLAY EXISTING PAVEMENT - 190mm THICK FLEXIBLE PAVEMENT IN ACCORDANCE WITH DETAIL ON SHEET 01

FULL DEPTH PAVEMENT - 290mm THICK FLEXIBLE PAVEMENT IN ACCORDANCE WITH DETAIL ON SHEET 01

40mm THICK ASPHALT PAVEMENT - CONSTRUCTED IN ACCORDANCE WITH YARRA RANGES SHIRE COUNCIL SPECIFICATIONS

50mm THICK ASPHALT VEHICLE CROSSING - CONSTRUCTED IN GENERAL ACCORDANCE WITH YARRA RANGES SHIRE COUNCIL STANDARD DRAWING SD / C2

100mm MINIMUM COMPACTED DEPTH CLASS 2 CRUSHED ROCK VEHICLE CROSSING - CONSTRUCTED IN GENERAL ACCORDANCE WITH YARRA RANGES SHIRE COUNCIL STANDARD DRAWING SD / C2

150mm MINIMUM COMPACTED DEPTH 3% CEMENT TREATED 20mm CLASS 2 CRUSHED ROCK - CONSTRUCTED IN ACCORDANCE WITH YARRA RANGES SHIRE COUNCIL SPECIFICATIONS
- 150mm COMPACTED DEPTH CLASS 2 CRUSHED ROCK SHOULDER - CONSTRUCTED IN ACCORDANCE WITH YARRA RANGES SHIRE COUNCIL SPECIFICATIONS

LAWN AREA TO BE REINSTATED WITH YARRA RANGES SHIRE COUNCIL APPROVED TOPSOIL AND GRASS SEED

NEW CONCRETE KERB AND CHANNEL IN ACCORDANCE WITH YARRA RANGES SHIRE COUNCIL STANDARD DRAWING SD / B1

PROPOSED PAVEMENT GRADE

NEW DRAINAGE PIT WITH PIT NUMBER AND PIPE

DIRECTION OF CHANNEL FLOW

SWALE INVERT

SUBSURFACE DRAINAGE IN ACCORDANCE WITH YARRA RANGES SHIRE COUNCIL STANDARD DRAWING SD / D4
- PAVEMENT LINE MARKING

EXISTING WATER

EXISTING GAS

EXISTING SEWER

EXISTING TELECOMMUNICATIONS

EXISTING UNDERGROUND ELECTRICITY

EXISTING CONTOUR MAJOR (1.0m)

EXISTING CONTOUR MINOR (0.2m)

EXISTING DRAINAGE PIPE

FILL BATTER EXTENT

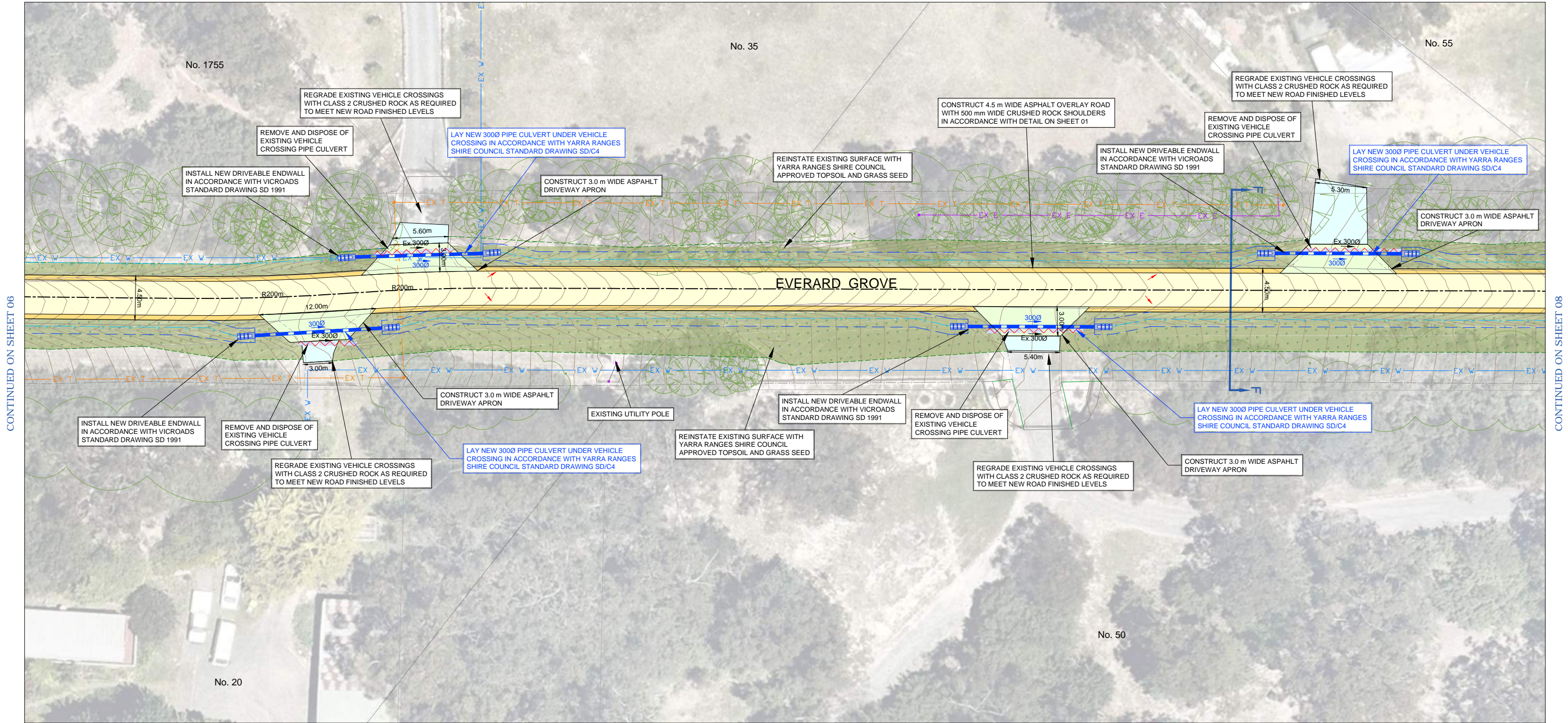
CUT BATTER EXTENT

REMOVE EXISTING DRAINAGE PIPE

EXISTING TREE FOR REMOVAL



WARNING
BEWARE OF UNDERGROUND SERVICES
THE LOCATION OF EXISTING UNDERGROUND SERVICES ARE APPROXIMATE ONLY AND THEIR EXACT POSITION SHOULD BE PROVEN ON SITE. NO GUARANTEE IS GIVEN THAT ALL EXISTING SERVICES ARE SHOWN.



GENERAL LAYOUT PLAN



VER	DESCRIPTION	DATE
03	FUNCTIONAL DESIGN - ISSUED FOR REVIEW	25-08-2022
02	FUNCTIONAL DESIGN - ISSUED FOR REVIEW	09-08-2022
01	FUNCTIONAL DESIGN - ISSUED FOR REVIEW	20-05-2022
00	FUNCTIONAL DESIGN - ISSUED FOR REVIEW	26-04-2022

CONSULTANT ENGINEER

PROCVIL
CONSULTING ENGINEERING
Specialist Civil Engineering Design Consultants
Commitment | Communication | Collaboration

PROCVIL CONSULTING PTY LTD
ABN 51 759 386 082
SUITE 20, 45-51 RINGWOOD ST, RINGWOOD VIC 3134
PO BOX 164, RINGWOOD VIC 3134
P: (03) 8644 6834
E: info@procivil.com.au
www.procivil.com.au

CIVIL ENGINEERING DESIGN
RACHAEL MURRAY

TECHNICAL PEER REVIEW
KURT CHAMBERLAIN

REGISTERED & CHARTERED PROFESSIONAL ENGINEER
CHRIS PROCTOR

ORIENTATION

OR AS SHOWN

ORIGINAL SCALE & SHEET SIZE
AS SHOWN @ A1

HEIGHT DATUM
AHD

COORDINATE DATUM
MGA 94 ZONE 55

SURVEY DATE
06-09-2021

AERIAL IMAGE DATE
12-12-2020

LOCAL GOVERNMENT AREA
SHIRE OF YARRA RANGES

CLIENT

CLIENT PROJECT MANAGER / CONTACT
NATALIE SURSOCK | YARRA RANGES SHIRE COUNCIL

FUNCTIONAL DESIGN

ROAD AND DRAINAGE RECONSTRUCTION WORKS
HENRY STREET, EVERARD GROVE AND LESTER STREET,
WOORI YALLOCK
GENERAL LAYOUT PLAN

PROJECT No.	PC21020
SHEET No.	07 OF 19
VERSION	03
DWG No.	PC21020 -07 - 03

LEGEND

- OVERLAY EXISTING PAVEMENT - 190mm THICK FLEXIBLE PAVEMENT IN ACCORDANCE WITH DETAIL ON SHEET 01

FULL DEPTH PAVEMENT - 290mm THICK FLEXIBLE PAVEMENT IN ACCORDANCE WITH DETAIL ON SHEET 01

40mm THICK ASPHALT PAVEMENT - CONSTRUCTED IN ACCORDANCE WITH YARRA RANGES SHIRE COUNCIL SPECIFICATIONS

50mm THICK ASPHALT VEHICLE CROSSING - CONSTRUCTED IN GENERAL ACCORDANCE WITH YARRA RANGES SHIRE COUNCIL STANDARD DRAWING SD / C2

100mm MINIMUM COMPACTED DEPTH CLASS 2 CRUSHED ROCK VEHICLE CROSSING - CONSTRUCTED IN GENERAL ACCORDANCE WITH YARRA RANGES SHIRE COUNCIL STANDARD DRAWING SD / C2

150mm MINIMUM COMPACTED DEPTH 3% CEMENT TREATED 20mm CLASS 2 CRUSHED ROCK - CONSTRUCTED IN ACCORDANCE WITH YARRA RANGES SHIRE COUNCIL SPECIFICATIONS
- 150mm COMPACTED DEPTH CLASS 2 CRUSHED ROCK SHOULDER - CONSTRUCTED IN ACCORDANCE WITH YARRA RANGES SHIRE COUNCIL SPECIFICATIONS

LAWN AREA TO BE REINSTATED WITH YARRA RANGES SHIRE COUNCIL APPROVED TOPSOIL AND GRASS SEED

NEW CONCRETE KERB AND CHANNEL IN ACCORDANCE WITH YARRA RANGES SHIRE COUNCIL STANDARD DRAWING SD / B1

PROPOSED PAVEMENT GRADE

NEW DRAINAGE PIT WITH PIT NUMBER AND PIPE

DIRECTION OF CHANNEL FLOW

SWALE INVERT

SUBSURFACE DRAINAGE IN ACCORDANCE WITH YARRA RANGES SHIRE COUNCIL STANDARD DRAWING SD / D4
- PAVEMENT LINE MARKING

EXISTING WATER

EXISTING GAS

EXISTING SEWER

EXISTING TELECOMMUNICATIONS

EXISTING UNDERGROUND ELECTRICITY

EXISTING CONTOUR MAJOR (1.0m)

EXISTING CONTOUR MINOR (0.2m)

EXISTING DRAINAGE PIPE

FILL BATTER EXTENT

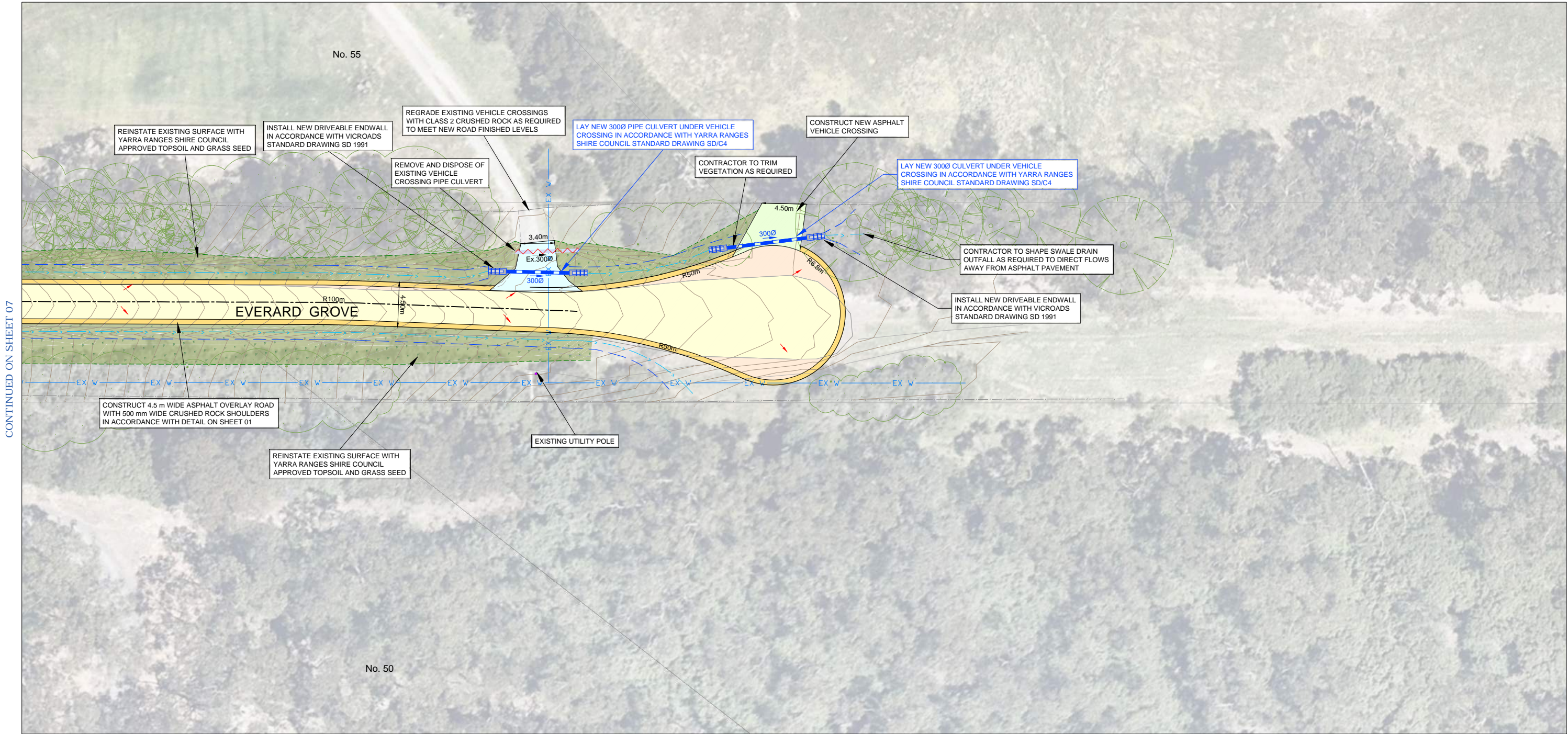
CUT BATTER EXTENT

REMOVE EXISTING DRAINAGE PIPE

EXISTING TREE FOR REMOVAL



WARNING
BEWARE OF UNDERGROUND SERVICES
THE LOCATION OF EXISTING UNDERGROUND SERVICES ARE APPROXIMATE ONLY AND THEIR EXACT POSITION SHOULD BE PROVEN ON SITE. NO GUARANTEE IS GIVEN THAT ALL EXISTING SERVICES ARE SHOWN.



GENERAL LAYOUT PLAN



VER	DESCRIPTION	DATE
03	FUNCTIONAL DESIGN - ISSUED FOR REVIEW	25-08-2022
02	FUNCTIONAL DESIGN - ISSUED FOR REVIEW	09-08-2022
01	FUNCTIONAL DESIGN - ISSUED FOR REVIEW	20-05-2022
00	FUNCTIONAL DESIGN - ISSUED FOR REVIEW	26-04-2022

CONSULTANT ENGINEER

PROCIVIL

CONSULTING ENGINEERING

Specialist Civil Engineering Design Consultants

Commitment | Communication | Collaboration

PROCIVIL CONSULTING PTY LTD

ABN 51 759 386 082

SUITE 20, 45-51 RINGWOOD ST, RINGWOOD VIC 3134

PO BOX 164, RINGWOOD VIC 3134

P: (03) 8644 6834

E: info@procivil.com.au

www.procivil.com.au

CIVIL ENGINEERING DESIGN

RACHAEL MURRAY

TECHNICAL PEER REVIEW

KURT CHAMBERLAIN

REGISTERED & CHARTERED PROFESSIONAL ENGINEER

CHRIS PROCTOR

ORIENTATION

OR AS SHOWN

ORIGINAL SCALE & SHEET SIZE

AS SHOWN @ A1

HEIGHT DATUM

AHD

COORDINATE DATUM

MGA 94 ZONE 55

SURVEY DATE

06-09-2021

AERIAL IMAGE DATE

12-12-2020

LOCAL GOVERNMENT AREA

SHIRE OF YARRA RANGES

CLIENT

Yarra Ranges Council

CLIENT PROJECT MANAGER / CONTACT

NATALIE SURSOCK | YARRA RANGES SHIRE COUNCIL

FUNCTIONAL DESIGN

ROAD AND DRAINAGE RECONSTRUCTION WORKS

HENRY STREET, EVERARD GROVE AND LESTER STREET,

WOORI YALLOCK

GENERAL LAYOUT PLAN

PROJECT No.	PC21020
SHEET No.	08 OF 19
VERSION	03
DWG No.	PC21020 -08 - 03

LEGEND

- OVERLAY EXISTING PAVEMENT - 190mm THICK FLEXIBLE PAVEMENT IN ACCORDANCE WITH DETAIL ON SHEET 01

FULL DEPTH PAVEMENT - 290mm THICK FLEXIBLE PAVEMENT IN ACCORDANCE WITH DETAIL ON SHEET 01

40mm THICK ASPHALT PAVEMENT - CONSTRUCTED IN ACCORDANCE WITH YARRA RANGES SHIRE COUNCIL SPECIFICATIONS

50mm THICK ASPHALT VEHICLE CROSSING - CONSTRUCTED IN GENERAL ACCORDANCE WITH YARRA RANGES SHIRE COUNCIL STANDARD DRAWING SD / C2

100mm MINIMUM COMPACTED DEPTH CLASS 2 CRUSHED ROCK VEHICLE CROSSING - CONSTRUCTED IN GENERAL ACCORDANCE WITH YARRA RANGES SHIRE COUNCIL STANDARD DRAWING SD / C2

150mm MINIMUM COMPACTED DEPTH 3% CEMENT TREATED 20mm CLASS 2 CRUSHED ROCK - CONSTRUCTED IN ACCORDANCE WITH YARRA RANGES SHIRE COUNCIL SPECIFICATIONS

150mm COMPACTED DEPTH CLASS 2 CRUSHED ROCK SHOULDER - CONSTRUCTED IN ACCORDANCE WITH YARRA RANGES SHIRE COUNCIL SPECIFICATIONS

LAWN AREA TO BE REINSTATED WITH YARRA RANGES SHIRE COUNCIL APPROVED TOPSOIL AND GRASS SEED

NEW CONCRETE KERB AND CHANNEL IN ACCORDANCE WITH YARRA RANGES SHIRE COUNCIL STANDARD DRAWING SD / B1

PROPOSED PAVEMENT GRADE

NEW DRAINAGE PIT WITH PIT NUMBER AND PIPE

DIRECTION OF CHANNEL FLOW

SWALE INVERT

SUBSURFACE DRAINAGE IN ACCORDANCE WITH YARRA RANGES SHIRE COUNCIL STANDARD DRAWING SD / D4

PAVEMENT LINE MARKING

EXISTING WATER

EXISTING GAS

EXISTING SEWER

EXISTING TELECOMMUNICATIONS

EXISTING UNDERGROUND ELECTRICITY

EXISTING CONTOUR MAJOR (1.0m)

EXISTING CONTOUR MINOR (0.2m)

EXISTING DRAINAGE PIPE

FILL BATTER EXTENT

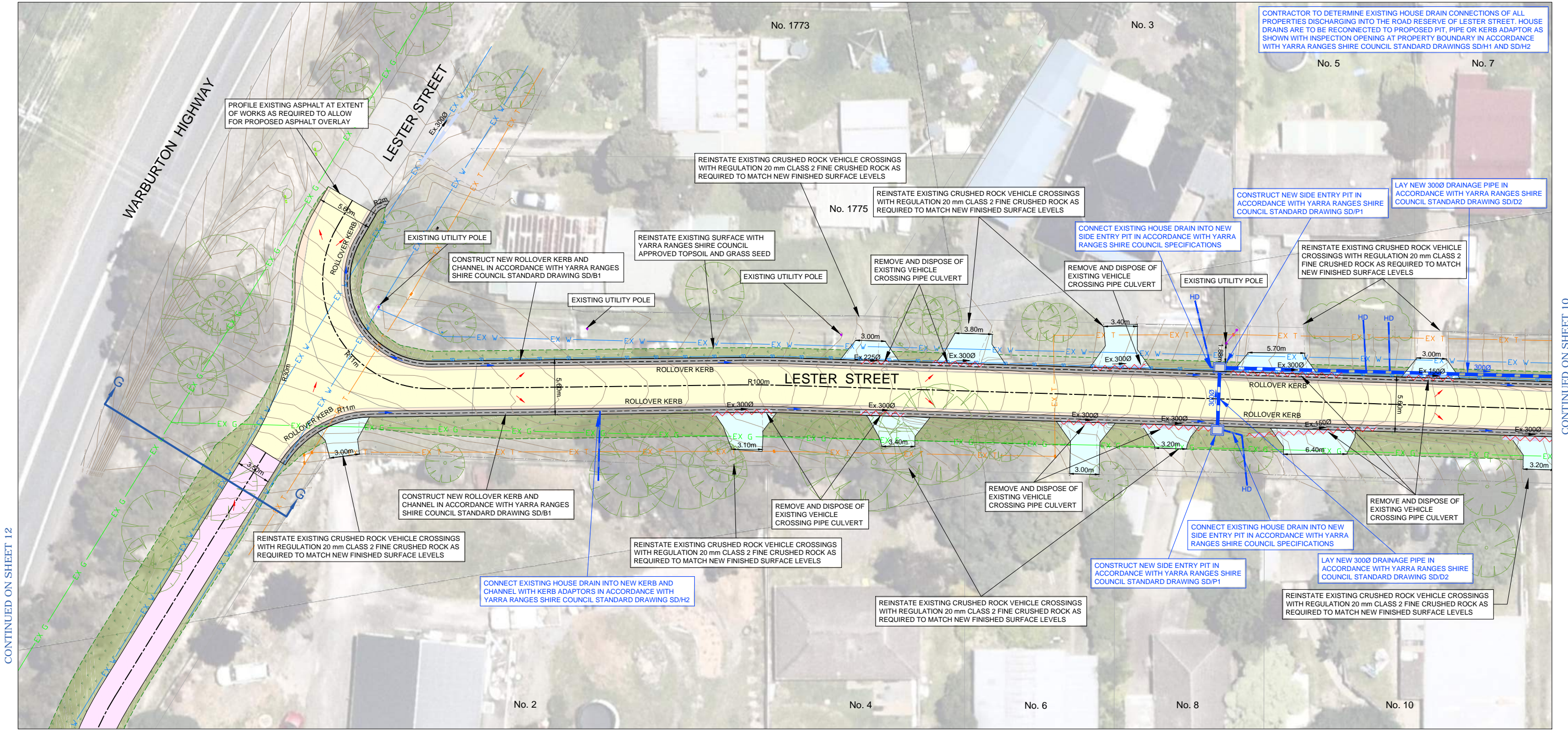
CUT BATTER EXTENT

REMOVE EXISTING DRAINAGE PIPE

EXISTING TREE FOR REMOVAL



WARNING
BEWARE OF UNDERGROUND SERVICES.
THE LOCATION OF EXISTING UNDERGROUND SERVICES ARE APPROXIMATE ONLY AND THEIR EXACT POSITION SHOULD BE PROVEN ON SITE. NO GUARANTEE IS GIVEN THAT ALL EXISTING SERVICES ARE SHOWN.



GENERAL LAYOUT PLAN



VER	DESCRIPTION	DATE
03	FUNCTIONAL DESIGN - ISSUED FOR REVIEW	25-08-2022
02	FUNCTIONAL DESIGN - ISSUED FOR REVIEW	09-08-2022
01	FUNCTIONAL DESIGN - ISSUED FOR REVIEW	20-05-2022
00	FUNCTIONAL DESIGN - ISSUED FOR REVIEW	26-04-2022

CONSULTANT ENGINEER

PROCIVIL
CONSULTING ENGINEERING
Specialist Civil Engineering Design Consultants
Commitment | Communication | Collaboration

PROCIVIL CONSULTING PTY LTD
ABN 51 759 386 082
SUITE 20, 45-51 RINGWOOD ST, RINGWOOD VIC 31134
PO BOX 164, RINGWOOD VIC 31134
P: (03) 8644 6834
E: info@procivil.com.au
www.procivil.com.au

CIVIL ENGINEERING DESIGN
RACHAEL MURRAY
TECHNICAL PEER REVIEW
KURT CHAMBERLAIN
REGISTERED & CHARTERED PROFESSIONAL ENGINEER
CHRIS PROCTOR

ORIENTATION

OR AS SHOWN

ORIGINAL SCALE & SHEET SIZE
AS SHOWN @ A1

HEIGHT DATUM
AHD

COORDINATE DATUM
MGA 94 ZONE 55

SURVEY DATE
06-09-2021

AERIAL IMAGE DATE
12-12-2020

LOCAL GOVERNMENT AREA
SHIRE OF YARRA RANGES

CLIENT

CLIENT PROJECT MANAGER / CONTACT
NATALIE SURSOCK | YARRA RANGES SHIRE COUNCIL

FUNCTIONAL DESIGN

ROAD AND DRAINAGE RECONSTRUCTION WORKS
HENRY STREET, EVERARD GROVE AND LESTER STREET,
WOORI YALLOCK
GENERAL LAYOUT PLAN

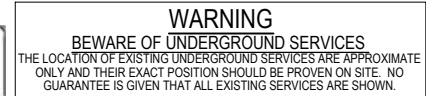
PROJECT No.
PC21020

SHEET No.
09 OF 19

VERSION
03

DWG No.
PC21020 -09 - 03

	OVERLAY EXISTING PAVEMENT - 190mm THICK FLEXIBLE PAVEMENT IN ACCORDANCE WITH DETAIL ON SHEET 01		150mm COMPACTED DEPTH CLASS 2 CRUSHED ROCK SHOULDER - CONSTRUCTED IN ACCORDANCE WITH YARRA RANGES SHIRE COUNCIL SPECIFICATIONS		PAVEMENT LINE MARKING
	FULL DEPTH PAVEMENT - 290mm THICK FLEXIBLE PAVEMENT IN ACCORDANCE WITH DETAIL ON SHEET 01		LAWN AREA TO BE REINSTATED WITH YARRA RANGES SHIRE COUNCIL APPROVED TOPSOIL AND GRASS SEED		EXISTING WATER
	40mm THICK ASPHALT PAVEMENT - CONSTRUCTED IN ACCORDANCE WITH YARRA RANGES SHIRE COUNCIL SPECIFICATIONS		NEW CONCRETE KERB AND CHANNEL IN ACCORDANCE WITH YARRA RANGES SHIRE COUNCIL STANDARD DRAWING SD / B1		EXISTING GAS
	50mm THICK ASPHALT VEHICLE CROSSING - CONSTRUCTED IN GENERAL ACCORDANCE WITH YARRA RANGES SHIRE COUNCIL STANDARD DRAWING SD / C2		PROPOSED PAVEMENT GRADE		EXISTING SEWER
	100mm MINIMUM COMPACTED DEPTH CLASS 2 CRUSHED ROCK VEHICLE CROSSING - CONSTRUCTED IN GENERAL ACCORDANCE WITH YARRA RANGES SHIRE COUNCIL STANDARD DRAWING SD / C2		NEW DRAINAGE PIT WITH PIT NUMBER AND PIPE		EXISTING TELECOMMUNICATIONS
	150mm MINIMUM COMPACTED DEPTH 3% CEMENT TREATED 20mm CLASS 2 CRUSHED ROCK - CONSTRUCTED IN ACCORDANCE WITH YARRA RANGES SHIRE COUNCIL SPECIFICATIONS		DIRECTION OF CHANNEL FLOW		EXISTING UNDERGROUND ELECTRICITY
			SWALE INVERT		EXISTING CONTOUR MAJOR (1.0m)
			SUBSURFACE DRAINAGE IN ACCORDANCE WITH YARRA RANGES SHIRE COUNCIL STANDARD DRAWING SD / D4		EXISTING CONTOUR MINOR (0.2m)
					EXISTING DRAINAGE PIPE
					FILL BATTER EXTENT
					CUT BATTER EXTENT
					REMOVE EXISTING DRAINAGE PIPE
					EXISTING TREE FOR REMOVAL



4 2 0 4 8 1:200 @ A1
1:400 @ A3

--	--	--	--	--	--	--	--	--	--	--	--	--	--	--	--	--	--	--	--	--	--	--	--	--	--	--	--	--	--	--	--	--	--	--	--	--	--	--	--	--	--	--	--	--	--	--	--	--	--	--	--	--	--	--	--	--	--	--	--	--	--	--	--	--	--	--	--	--	--	--	--	--	--	--	--	--	--	--	--	--	--	--	--	--	--	--	--	--	--	--	--	--	--	--	--	--	--	--	--	--	--	--	--	--	--	--	--	--	--	--	--	--	--	--	--	--	--	--	--	--	--	--	--	--	--	--	--	--	--	--	--	--	--	--	--	--	--	--	--	--	--	--	--	--	--	--	--	--	--	--	--	--	--	--	--	--	--	--	--	--	--	--	--	--	--	--	--	--	--	--	--	--	--	--	--	--	--	--	--	--	--	--	--	--	--	--	--	--	--	--	--	--	--	--	--	--	--	--	--	--	--	--	--	--	--	--	--	--	--	--	--	--	--	--	--	--	--	--	--	--	--	--	--	--	--	--	--	--	--	--	--	--	--	--	--	--	--	--	--	--	--	--	--	--	--	--	--	--	--	--	--	--	--	--	--	--	--	--	--	--	--	--	--	--	--	--	--	--	--	--	--	--	--	--	--	--	--	--	--	--	--	--	--	--	--	--	--	--	--	--	--	--	--	--	--	--	--	--	--	--	--	--	--	--	--	--	--	--	--	--	--	--	--	--	--	--	--	--	--	--	--	--	--	--	--	--	--	--	--	--	--	--	--	--	--	--	--	--	--	--	--	--	--	--	--	--	--	--	--	--	--	--	--	--	--	--	--	--	--	--	--	--	--	--	--	--	--	--	--	--	--	--	--	--	--	--	--	--	--	--	--	--	--	--	--	--	--	--	--	--	--	--	--	--	--	--	--	--	--	--	--	--	--	--	--	--	--	--	--	--	--	--	--	--	--	--	--	--	--	--	--	--	--	--	--	--	--	--	--	--	--	--	--	--	--	--	--	--	--	--	--	--	--	--	--	--	--	--	--	--	--	--	--	--	--	--	--	--	--	--	--	--	--	--	--	--	--	--	--	--	--	--	--	--	--	--	--	--	--	--	--	--	--	--	--	--	--	--	--	--	--	--	--	--	--	--	--	--	--	--	--	--	--	--	--	--	--	--	--	--	--	--	--	--	--	--	--	--	--	--	--	--	--	--	--	--	--	--	--	--	--	--	--	--	--	--	--	--	--	--	--	--	--	--	--	--	--	--	--	--	--	--	--	--	--	--	--	--	--	--	--	--	--	--	--	--	--	--	--	--	--	--	--	--	--	--	--	--	--	--	--	--	--	--	--	--	--	--	--	--	--	--	--	--	--	--	--	--	--	--	--	--	--	--	--	--	--	--	--	--	--	--	--	--	--	--	--	--	--	--	--	--	--	--	--	--	--	--	--	--	--	--	--	--	--	--	--	--	--	--	--	--	--	--	--	--	--	--	--	--	--	--	--	--	--	--	--	--	--	--	--	--	--	--	--	--	--	--	--	--	--	--	--	--	--	--	--	--	--	--	--	--	--	--	--	--	--	--	--	--	--	--	--	--	--	--	--	--	--	--	--	--	--	--	--	--	--	--	--	--	--	--	--	--	--	--	--	--	--	--	--	--	--	--	--	--	--	--	--	--	--	--	--	--	--	--	--	--	--	--	--	--	--	--	--	--	--	--	--	--	--	--	--	--	--	--	--	--	--	--	--	--	--	--	--	--	--	--	--	--	--	--	--	--	--	--	--	--	--	--	--	--	--	--	--	--	--	--	--	--	--	--	--	--	--	--	--	--	--	--	--	--	--	--	--	--	--	--	--	--	--	--	--	--	--	--	--	--	--	--	--	--	--	--	--	--	--	--	--	--	--	--	--	--	--	--	--	--	--	--	--	--	--	--	--	--	--	--	--	--	--	--	--	--	--	--	--	--	--	--	--	--	--	--	--	--	--	--	--	--	--	--	--	--	--	--	--	--	--	--	--	--	--	--	--	--	--	--	--	--	--	--	--	--	--	--	--	--	--	--	--	--	--	--	--	--	--	--	--	--	--	--	--	--	--	--	--	--	--	--	--	--	--	--	--	--	--	--	--	--	--	--	--	--	--	--	--	--	--	--	--	--	--	--	--	--	--	--	--	--	--	--	--	--	--	--	--	--	--	--	--	--	--	--	--	--	--	--	--	--	--	--	--	--	--	--	--	--	--	--	--	--	--	--	--	--	--	--	--	--	--	--	--	--	--	--	--	--	--	--	--	--	--	--	--	--	--	--	--	--	--	--	--	--	--	--	--	--	--	--	--	--	--	--	--	--	--	--	--	--	--	--	--	--	--	--	--	--	--	--	--	--	--	--	--	--	--	--	--	--	--	--	--	--	--	--	--	--	--	--	--	--	--	--	--	--	--	--	--	--	--	--	--	--	--	--	--	--	--	--	--	--	--	--	--	--	--	--	--	--	--	--	--	--	--	--	--	--	--	--	--	--	--	--	--	--	--	--	--	--	--	--	--	--	--	--	--	--	--	--	--	--	--	--	--	--	--	--	--	--	--	--	--	--	--	--	--	--	--	--	--	--	--	--	--	--	--	--	--	--	--	--	--	--	--	--	--	--	--	--	--	--	--	--	--	--	--	--	--	--	--	--	--

LEGEND

- OVERLAY EXISTING PAVEMENT - 190mm THICK FLEXIBLE PAVEMENT IN ACCORDANCE WITH DETAIL ON SHEET 01

FULL DEPTH PAVEMENT - 290mm THICK FLEXIBLE PAVEMENT IN ACCORDANCE WITH DETAIL ON SHEET 01

40mm THICK ASPHALT PAVEMENT - CONSTRUCTED IN ACCORDANCE WITH YARRA RANGES SHIRE COUNCIL SPECIFICATIONS

50mm THICK ASPHALT VEHICLE CROSSING - CONSTRUCTED IN GENERAL ACCORDANCE WITH YARRA RANGES SHIRE COUNCIL STANDARD DRAWING SD / C2

100mm MINIMUM COMPACTED DEPTH CLASS 2 CRUSHED ROCK VEHICLE CROSSING - CONSTRUCTED IN GENERAL ACCORDANCE WITH YARRA RANGES SHIRE COUNCIL STANDARD DRAWING SD / C2

150mm MINIMUM COMPACTED DEPTH 3% CEMENT TREATED 20mm CLASS 2 CRUSHED ROCK - CONSTRUCTED IN ACCORDANCE WITH YARRA RANGES SHIRE COUNCIL SPECIFICATIONS

150mm COMPACTED DEPTH CLASS 2 CRUSHED ROCK SHOULDER - CONSTRUCTED IN ACCORDANCE WITH YARRA RANGES SHIRE COUNCIL SPECIFICATIONS

LAWN AREA TO BE REINSTATED WITH YARRA RANGES SHIRE COUNCIL APPROVED TOPSOIL AND GRASS SEED

NEW CONCRETE KERB AND CHANNEL IN ACCORDANCE WITH YARRA RANGES SHIRE COUNCIL STANDARD DRAWING SD / B1

PROPOSED PAVEMENT GRADE

NEW DRAINAGE PIT WITH PIT NUMBER AND PIPE

DIRECTION OF CHANNEL FLOW

SWALE INVERT

SUBSURFACE DRAINAGE IN ACCORDANCE WITH YARRA RANGES SHIRE COUNCIL STANDARD DRAWING SD / D4

PAVEMENT LINE MARKING

EXISTING WATER

EXISTING GAS

EXISTING SEWER

EXISTING TELECOMMUNICATIONS

EXISTING UNDERGROUND ELECTRICITY

EXISTING CONTOUR MAJOR (1.0m)

EXISTING CONTOUR MINOR (0.2m)

EXISTING DRAINAGE PIPE

FILL BATTER EXTENT

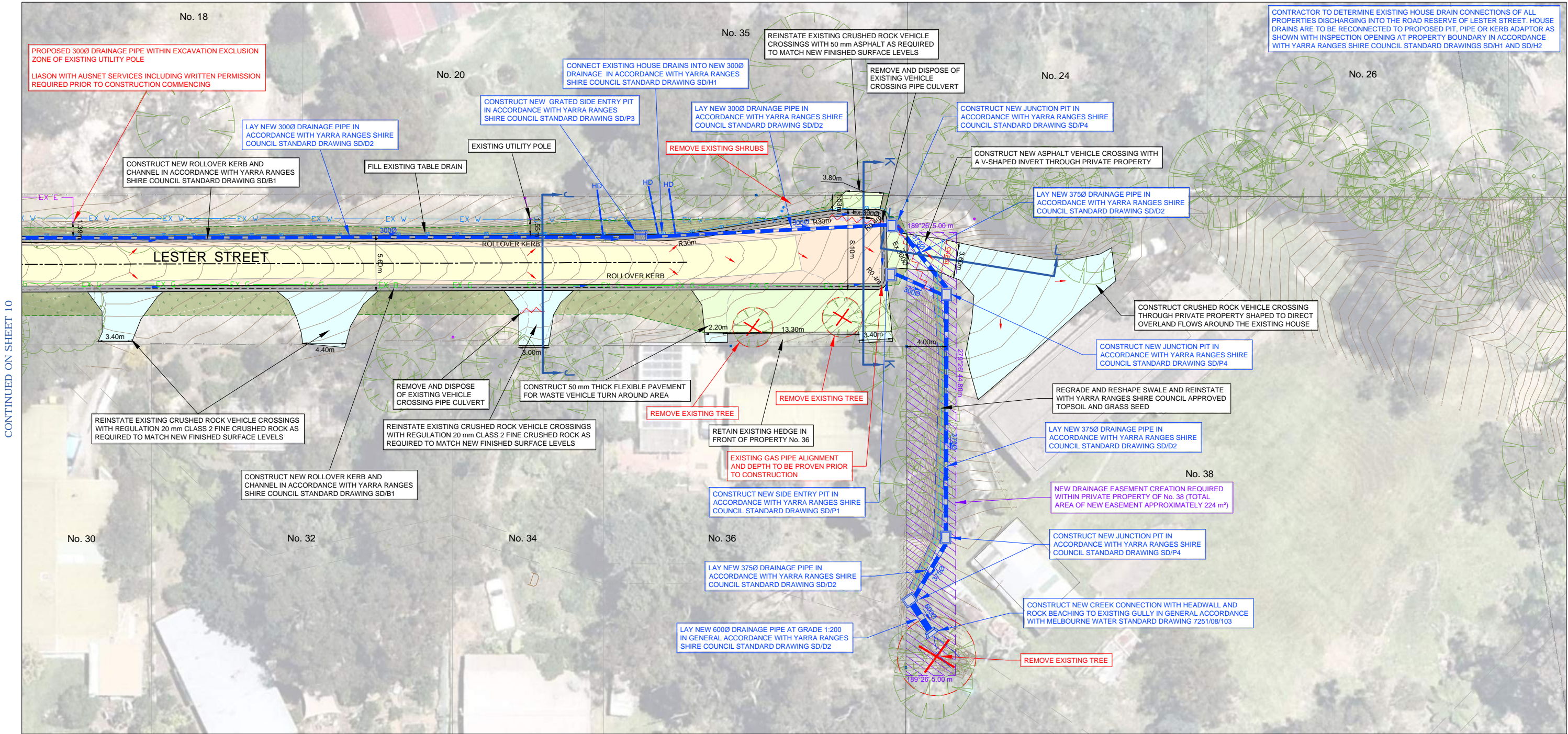
CUT BATTER EXTENT

REMOVE EXISTING DRAINAGE PIPE

EXISTING TREE FOR REMOVAL



WARNING
BEWARE OF UNDERGROUND SERVICES.
THE LOCATION OF EXISTING UNDERGROUND SERVICES ARE APPROXIMATE ONLY AND THEIR EXACT POSITION SHOULD BE PROVEN ON SITE. NO GUARANTEE IS GIVEN THAT ALL EXISTING SERVICES ARE SHOWN.



GENERAL LAYOUT PLAN



VER	DESCRIPTION	DATE
03	FUNCTIONAL DESIGN - ISSUED FOR REVIEW	25-08-2022
02	FUNCTIONAL DESIGN - ISSUED FOR REVIEW	09-08-2022
01	FUNCTIONAL DESIGN - ISSUED FOR REVIEW	20-05-2022
00	FUNCTIONAL DESIGN - ISSUED FOR REVIEW	26-04-2022

CONSULTANT ENGINEER

PROCIVIL
CONSULTING ENGINEERING
Specialist Civil Engineering Design Consultants
Commitment | Communication | Collaboration

PROCIVIL CONSULTING PTY LTD
ABN 51 759 386 092
SUITE 20, 45-51 RINGWOOD ST, RINGWOOD VIC 3134
PO BOX 164, RINGWOOD VIC 3134
P: (03) 8644 6834
E: info@procivil.com.au
www.procivil.com.au

CIVIL ENGINEERING DESIGN
RACHAEL MURRAY
REGISTERED & CHARTERED PROFESSIONAL ENGINEER
CHRIS PROCTOR

TECHNICAL PEER REVIEW
KURT CHAMBERLAIN

ORIENTATION

OR AS SHOWN

ORIGINAL SCALE & SHEET SIZE
AS SHOWN @ A1

HEIGHT DATUM
AHD

COORDINATE DATUM
MGA 94 ZONE 55

SURVEY DATE
06-09-2021

AERIAL IMAGE DATE
12-12-2020

LOCAL GOVERNMENT AREA
SHIRE OF YARRA RANGES

CLIENT

CLIENT PROJECT MANAGER / CONTACT
NATALIE SURSOCK | YARRA RANGES SHIRE COUNCIL

FUNCTIONAL DESIGN

ROAD AND DRAINAGE RECONSTRUCTION WORKS
HENRY STREET, EVERARD GROVE AND LESTER STREET,
WOORI YALLOCK
GENERAL LAYOUT PLAN

PROJECT No.
PC21020

SHEET No.
11 OF 19

VERSION
03

DWG No.
PC21020 -11 - 03

LEGEND

- OVERLAY EXISTING PAVEMENT - 190mm THICK FLEXIBLE PAVEMENT IN ACCORDANCE WITH DETAIL ON SHEET 01

FULL DEPTH PAVEMENT - 290mm THICK FLEXIBLE PAVEMENT IN ACCORDANCE WITH DETAIL ON SHEET 01

40mm THICK ASPHALT PAVEMENT - CONSTRUCTED IN ACCORDANCE WITH YARRA RANGES SHIRE COUNCIL SPECIFICATIONS

50mm THICK ASPHALT VEHICLE CROSSING - CONSTRUCTED IN GENERAL ACCORDANCE WITH YARRA RANGES SHIRE COUNCIL STANDARD DRAWING SD / C2

100mm MINIMUM COMPACTED DEPTH CLASS 2 CRUSHED ROCK VEHICLE CROSSING - CONSTRUCTED IN GENERAL ACCORDANCE WITH YARRA RANGES SHIRE COUNCIL STANDARD DRAWING SD / C2

150mm MINIMUM COMPACTED DEPTH 3% CEMENT TREATED 20mm CLASS 2 CRUSHED ROCK - CONSTRUCTED IN ACCORDANCE WITH YARRA RANGES SHIRE COUNCIL SPECIFICATIONS
- 150mm COMPACTED DEPTH CLASS 2 CRUSHED ROCK SHOULDER - CONSTRUCTED IN ACCORDANCE WITH YARRA RANGES SHIRE COUNCIL SPECIFICATIONS

LAWN AREA TO BE REINSTATED WITH YARRA RANGES SHIRE COUNCIL APPROVED TOPSOIL AND GRASS SEED

NEW CONCRETE KERB AND CHANNEL IN ACCORDANCE WITH YARRA RANGES SHIRE COUNCIL STANDARD DRAWING SD / B1

PROPOSED PAVEMENT GRADE

NEW DRAINAGE PIT WITH PIT NUMBER AND PIPE

DIRECTION OF CHANNEL FLOW

SWALE INVERT

SUBSURFACE DRAINAGE IN ACCORDANCE WITH YARRA RANGES SHIRE COUNCIL STANDARD DRAWING SD / D4
- PAVEMENT LINE MARKING

EXISTING WATER

EXISTING GAS

EXISTING SEWER

EXISTING TELECOMMUNICATIONS

EXISTING UNDERGROUND ELECTRICITY

EXISTING CONTOUR MAJOR (1.0m)

EXISTING CONTOUR MINOR (0.2m)

EXISTING DRAINAGE PIPE

FILL BATTER EXTENT

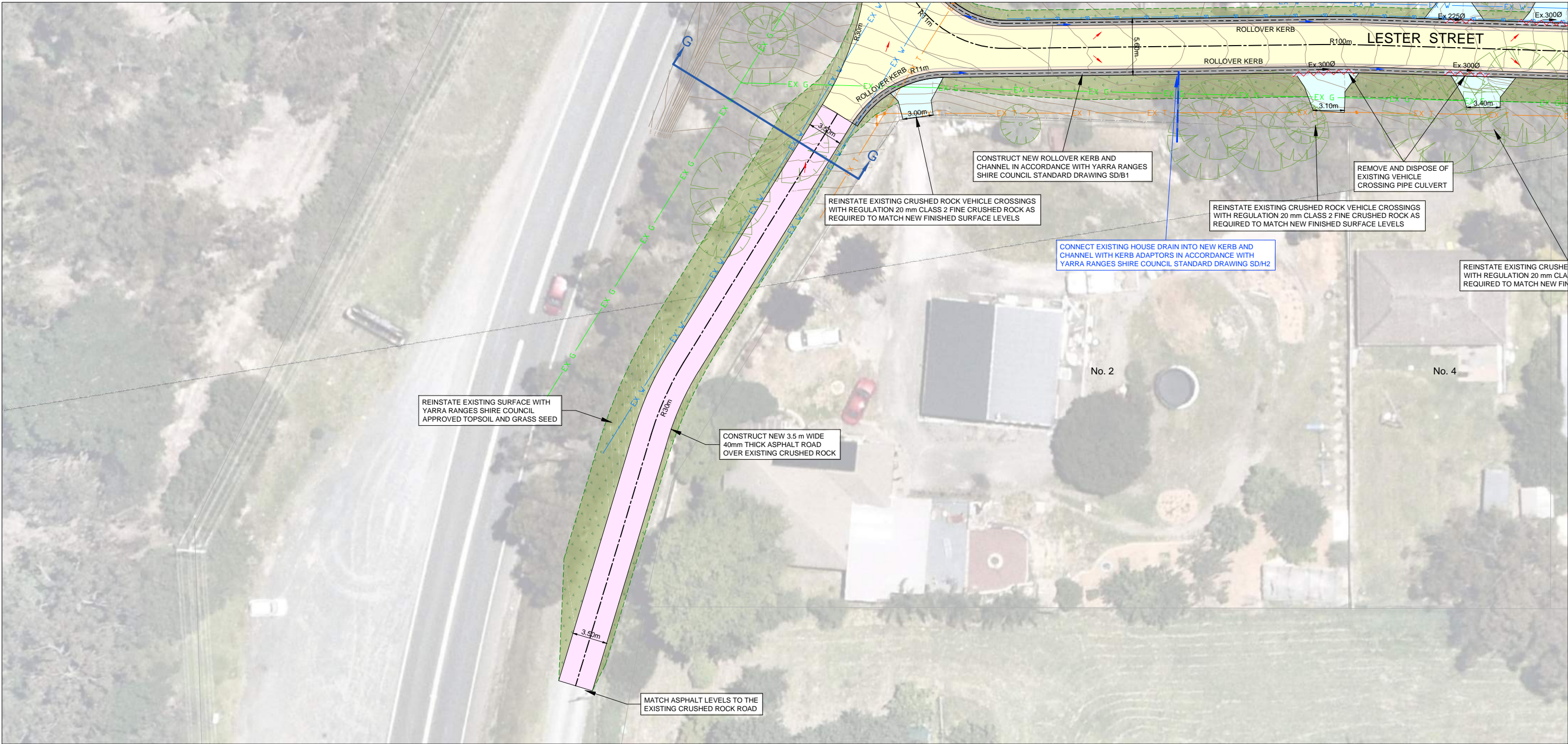
CUT BATTER EXTENT

REMOVE EXISTING DRAINAGE PIPE

EXISTING TREE FOR REMOVAL



WARNING
BEWARE OF UNDERGROUND SERVICES.
THE LOCATION OF EXISTING UNDERGROUND SERVICES ARE APPROXIMATE ONLY AND THEIR EXACT POSITION SHOULD BE PROVEN ON SITE. NO GUARANTEE IS GIVEN THAT ALL EXISTING SERVICES ARE SHOWN.



GENERAL LAYOUT PLAN



03	FUNCTIONAL DESIGN - ISSUED FOR REVIEW	25-08-2022
02	FUNCTIONAL DESIGN - ISSUED FOR REVIEW	09-08-2022
01	FUNCTIONAL DESIGN - ISSUED FOR REVIEW	20-05-2022
00	FUNCTIONAL DESIGN - ISSUED FOR REVIEW	26-04-2022
VER	DESCRIPTION	DATE

CONSULTANT ENGINEER

PROCIVIL
CONSULTING ENGINEERING
Specialist Civil Engineering Design Consultants
Commitment | Communication | Collaboration

PROCIVIL CONSULTING PTY LTD
ABN 51 759 386 082
SUITE 20, 45-51 RINGWOOD ST, RINGWOOD VIC 3134
PO BOX 164, RINGWOOD VIC 3134
P: (03) 8644 6834
E: info@procivil.com.au
www.procivil.com.au

CIVIL ENGINEERING DESIGN
RACHAEL MURRAY
REGISTERED & CHARTERED PROFESSIONAL ENGINEER
CHRIS PROCTOR

TECHNICAL PEER REVIEW
KURT CHAMBERLAIN

ORIENTATION

OR AS SHOWN

ORIGINAL SCALE & SHEET SIZE
AS SHOWN @ A1

HEIGHT DATUM
AHD

COORDINATE DATUM
MGA 94 ZONE 55

SURVEY DATE
06-09-2021

AERIAL IMAGE DATE
12-12-2020

LOCAL GOVERNMENT AREA
SHIRE OF YARRA RANGES

CLIENT

CLIENT PROJECT MANAGER / CONTACT
NATALIE SURSOCK | YARRA RANGES SHIRE COUNCIL

FUNCTIONAL DESIGN

ROAD AND DRAINAGE RECONSTRUCTION WORKS
HENRY STREET, EVERARD GROVE AND LESTER STREET,
WOORI YALLOCK
GENERAL LAYOUT PLAN

PROJECT No.
PC21020

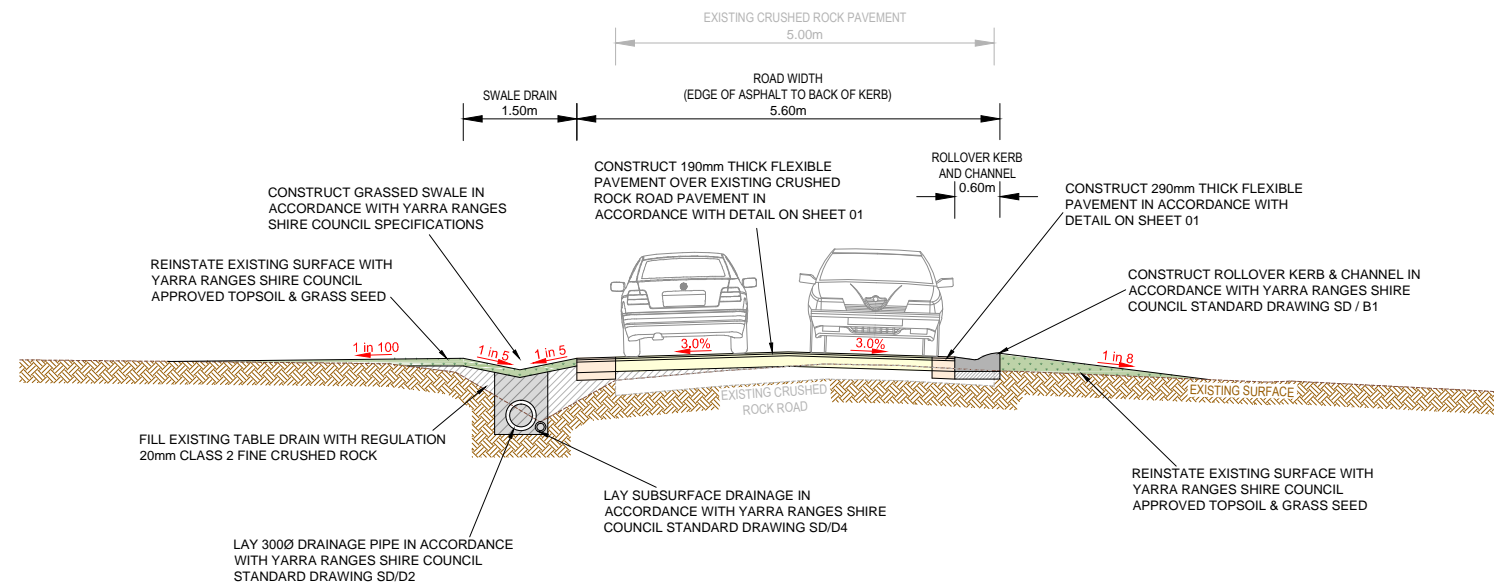
SHEET No.
12 OF 19

VERSION
03

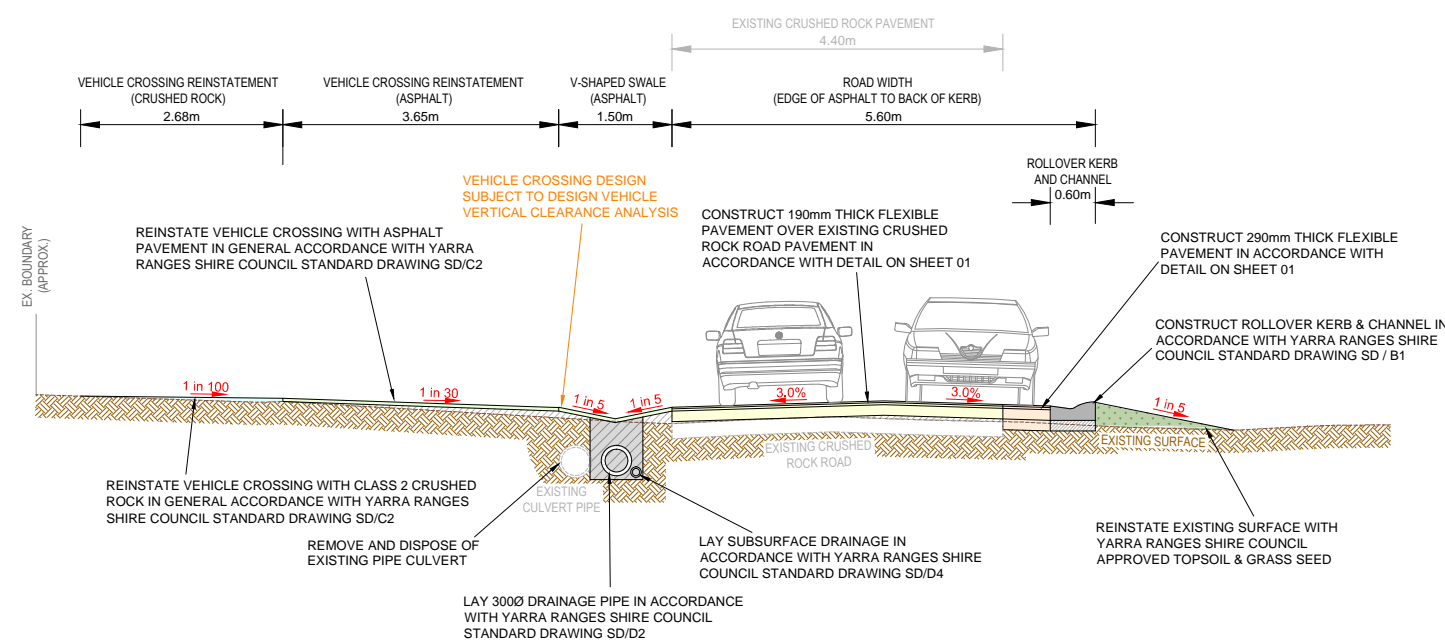
DWG No.
PC21020 -12 - 03



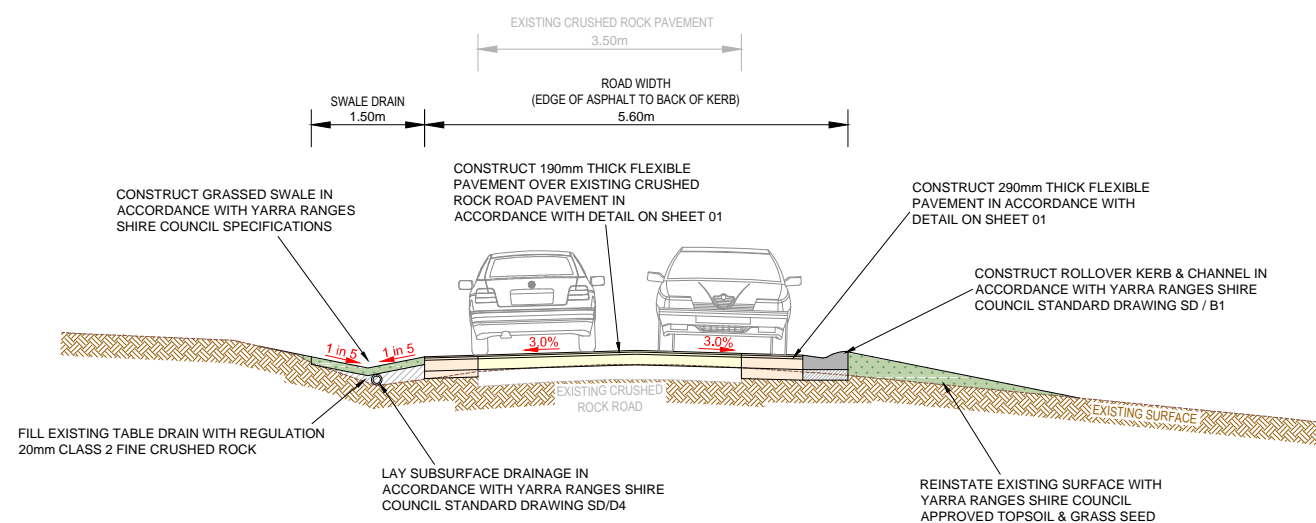
WARNING
BEWARE OF UNDERGROUND SERVICES
THE LOCATION OF EXISTING UNDERGROUND SERVICES ARE APPROXIMATE ONLY AND THEIR EXACT POSITION SHOULD BE PROVEN ON SITE. NO GUARANTEE IS GIVEN THAT ALL EXISTING SERVICES ARE SHOWN.



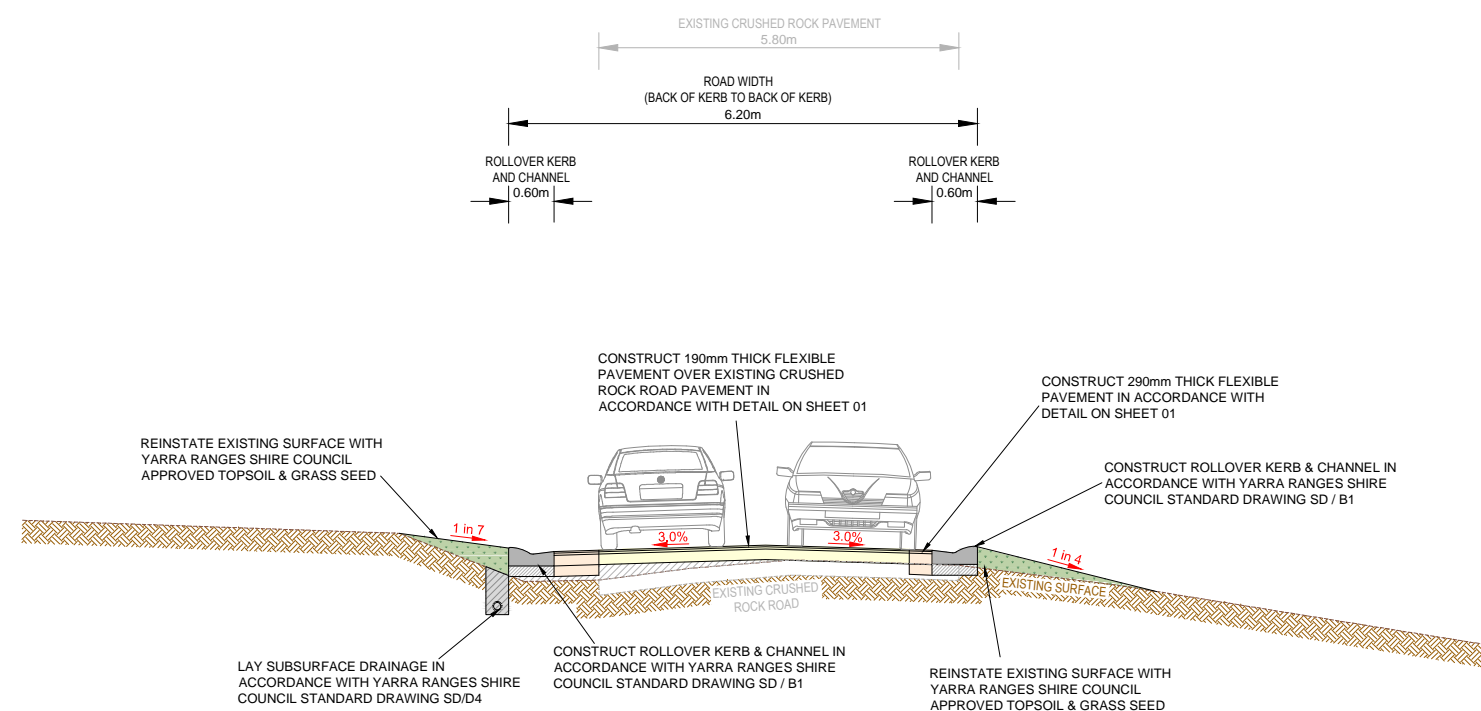
SECTION A-A



SECTION B-B



SECTION C-C



SECTION D-D



VER	DESCRIPTION	DATE
03	FUNCTIONAL DESIGN - ISSUED FOR REVIEW	25-08-2022
02	FUNCTIONAL DESIGN - ISSUED FOR REVIEW	09-08-2022
01	FUNCTIONAL DESIGN - ISSUED FOR REVIEW	20-05-2022
00	FUNCTIONAL DESIGN - ISSUED FOR REVIEW	26-04-2022

CONSULTANT ENGINEER

PROCIVIL
CONSULTING ENGINEERING

Specialist Civil Engineering Design Consultants

Commitment | Communication | Collaboration

PROCIVIL CONSULTING PTY LTD
ABN 51 759 386 082
SUITE 20, 45-51 RINGWOOD ST, RINGWOOD VIC 3134
PO BOX 164, RINGWOOD VIC 3134
P: (03) 8644 6834
E: info@procivil.com.au
www.procivil.com.au

CIVIL ENGINEERING DESIGN
RACHAEL MURRAY

TECHNICAL PEER REVIEW
KURT CHAMBERLAIN

REGISTERED & CHARTERED PROFESSIONAL ENGINEER
CHRIS PROCTOR

ORIENTATION

OR AS SHOWN

ORIGINAL SCALE & SHEET SIZE
AS SHOWN @ A1

HEIGHT DATUM
AHD

COORDINATE DATUM
MGA 94 ZONE 55

SURVEY DATE
06-09-2021

AERIAL IMAGE DATE
12-12-2020

LOCAL GOVERNMENT AREA
SHIRE OF YARRA RANGES

CLIENT

CLIENT PROJECT MANAGER / CONTACT
NATALIE SURSOCK | YARRA RANGES SHIRE COUNCIL

FUNCTIONAL DESIGN

ROAD AND DRAINAGE RECONSTRUCTION WORKS

HENRY STREET, EVERARD GROVE AND LESTER STREET,
WOORI YALLOCK

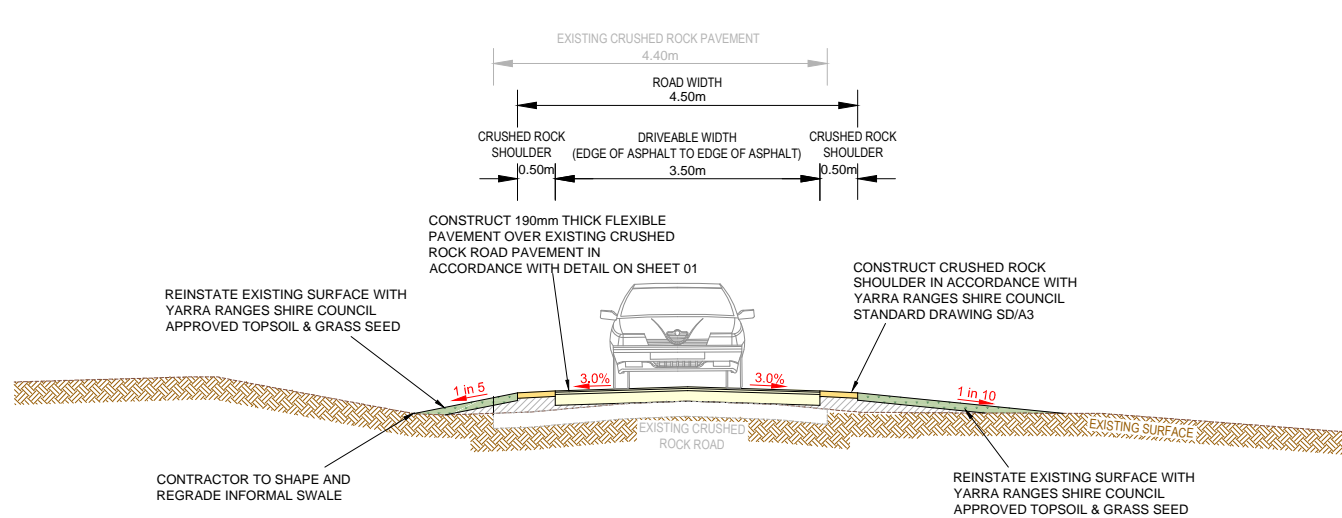
SECTIONS A-A, B-B, C-C & D-D

PROJECT No.
PC21020

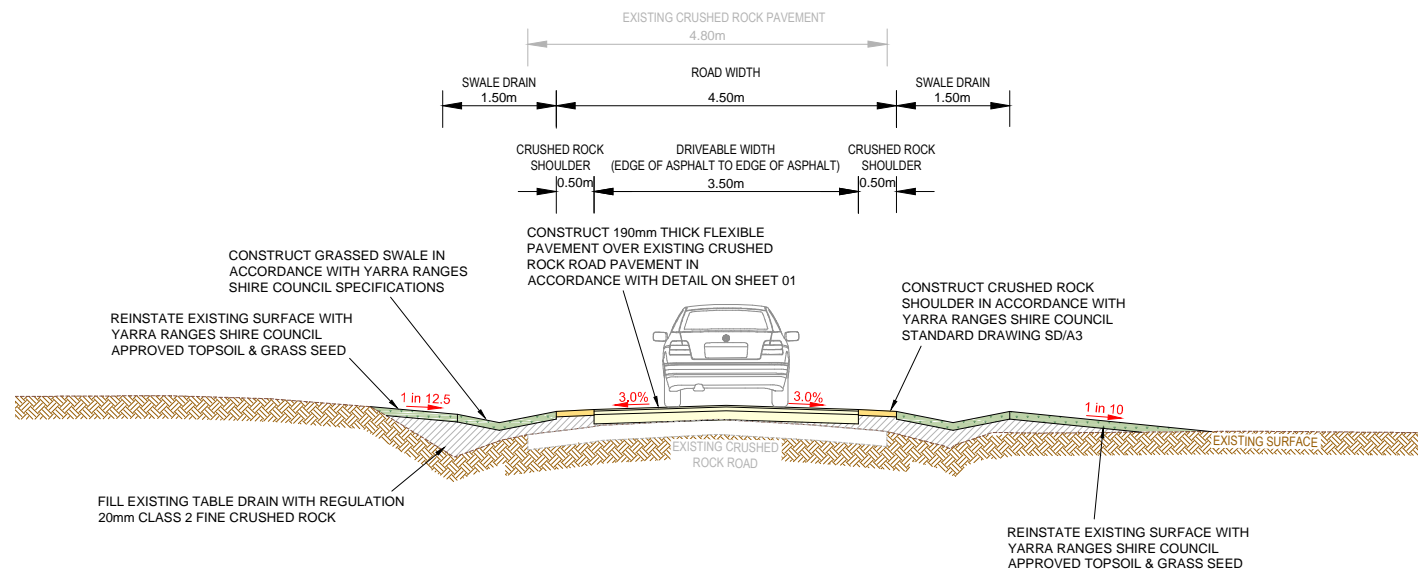
SHEET No.
13 OF 19

VERSION
03

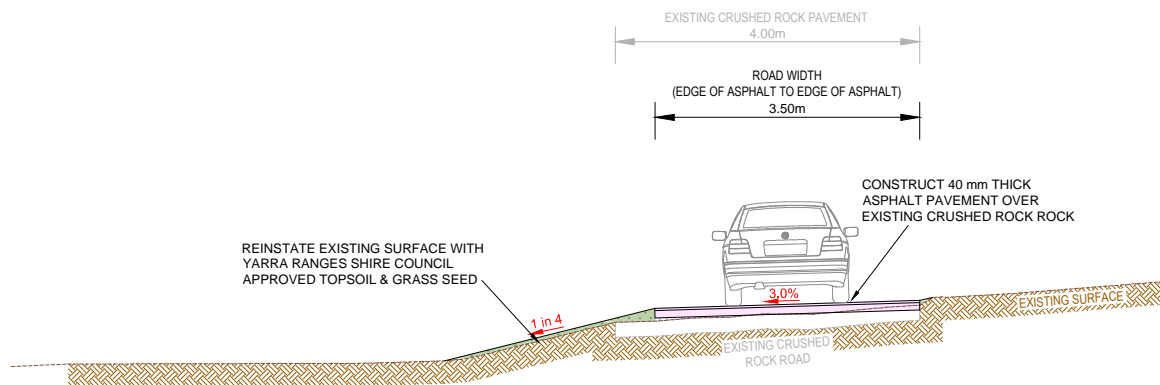
DWG No.
PC21020 -13 - 03



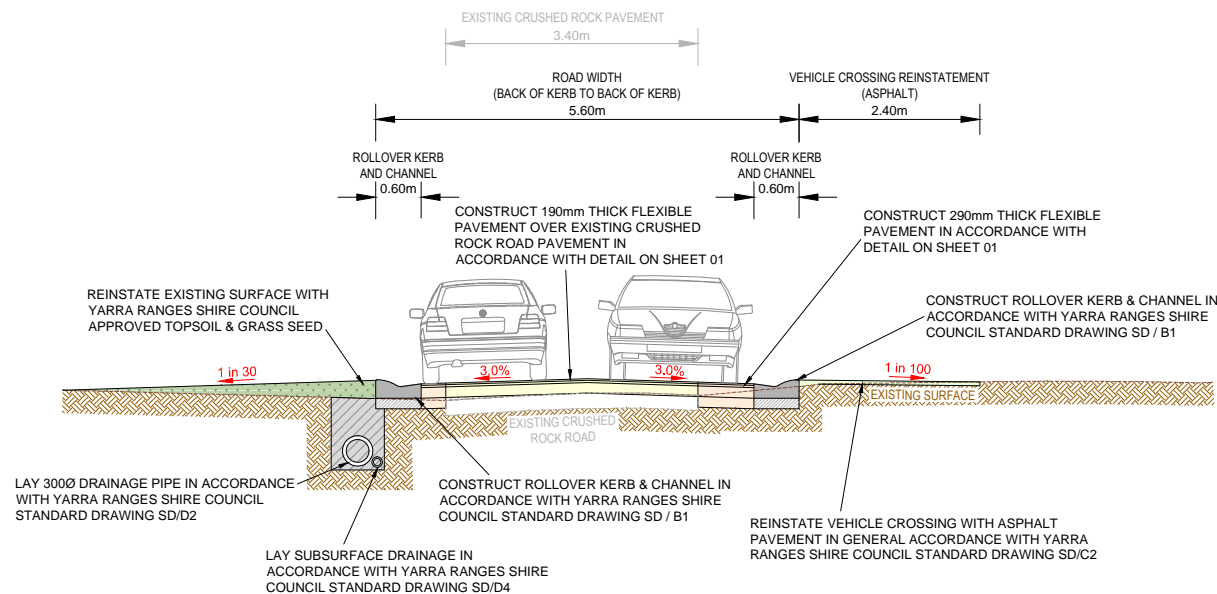
SECTION E-E



SECTION F-F



SECTION G-G



SECTION H-H



VER	DESCRIPTION	DATE
03	FUNCTIONAL DESIGN - ISSUED FOR REVIEW	25-08-2022
02	FUNCTIONAL DESIGN - ISSUED FOR REVIEW	09-08-2022
01	FUNCTIONAL DESIGN - ISSUED FOR REVIEW	20-05-2022
00	FUNCTIONAL DESIGN - ISSUED FOR REVIEW	26-04-2022

CONSULTANT ENGINEER

PROCIVIL
CONSULTING ENGINEERING

Specialist Civil Engineering Design Consultants

Commitment | Communication | Collaboration

PROCIVIL CONSULTING PTY LTD
ABN 51 759 386 082
SUITE 20, 45-51 RINGWOOD ST, RINGWOOD VIC 3134
PO BOX 164, RINGWOOD VIC 3134
P: (03) 8644 6834
E: info@procivil.com.au
www.procivil.com.au

CIVIL ENGINEERING DESIGN
RACHAEL MURRAY

TECHNICAL PEER REVIEW
KURT CHAMBERLAIN

REGISTERED & CHARTERED PROFESSIONAL ENGINEER
CHRIS PROCTOR

ORIENTATION

OR AS SHOWN

ORIGINAL SCALE & SHEET SIZE
AS SHOWN @ A1

HEIGHT DATUM
AHD

COORDINATE DATUM
MGA 94 ZONE 55

SURVEY DATE
06-09-2021

AERIAL IMAGE DATE
12-12-2020

LOCAL GOVERNMENT AREA
SHIRE OF YARRA RANGES

CLIENT

Yarra Ranges Council

CLIENT PROJECT MANAGER / CONTACT
NATALIE SURSOCK | YARRA RANGES SHIRE COUNCIL

FUNCTIONAL DESIGN

ROAD AND DRAINAGE RECONSTRUCTION WORKS

HENRY STREET, EVERARD GROVE AND LESTER STREET,
WOORI YALLOCK

SECTIONS E-E, F-F, G-G & H-H

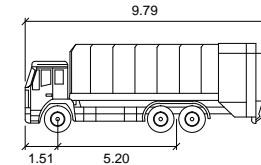
PROJECT No.
PC21020

SHEET No.
14 OF 19

VERSION
03

DWG No.
PC21020 -14 - 03

[illegible]

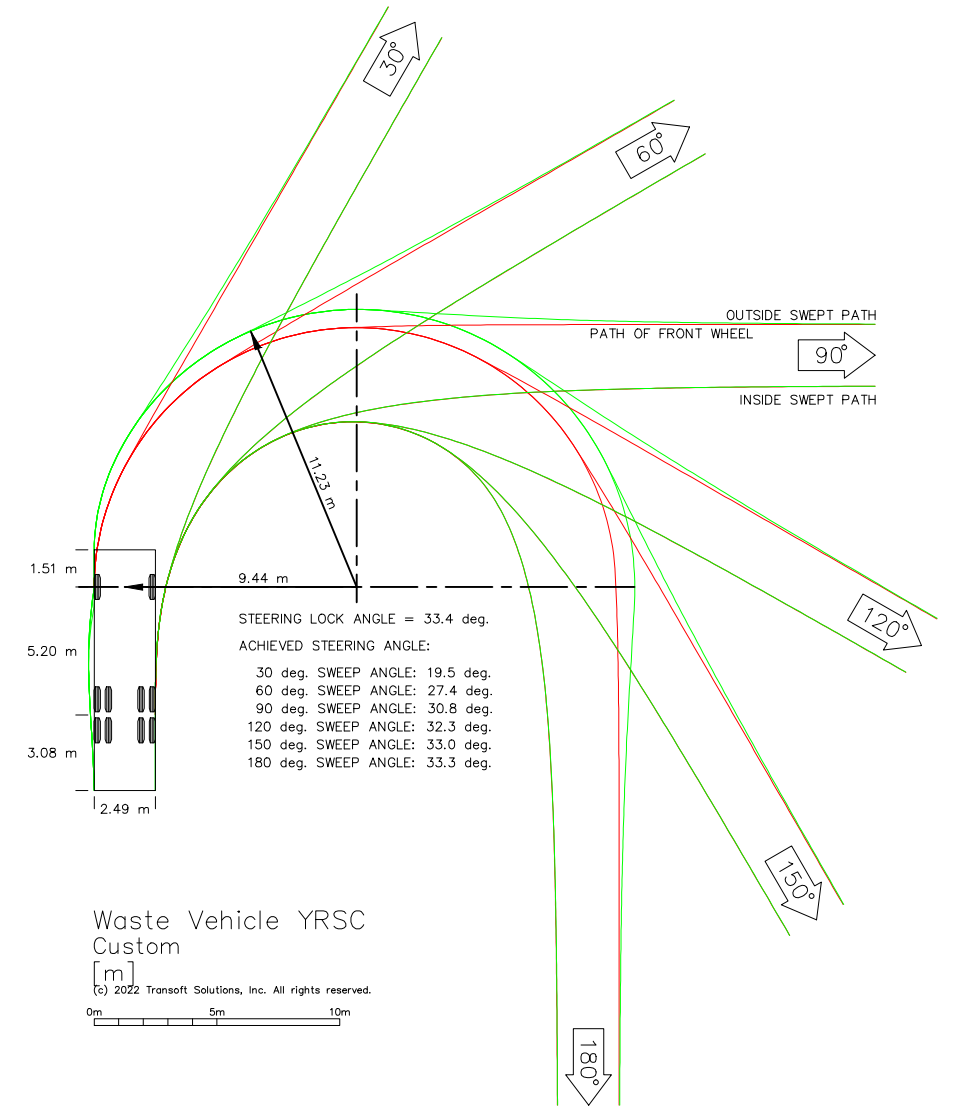


Waste Vehicle YRSC

	meters
Width	: 2.49
Track	: 2.50
Lock to Lock Time	: 6.0
Steering Angle	: 33.4




VEHICLE CROSSING SWEEP PATH SHOWN WITH YARRA RANGES SHIRE COUNCIL WASTE VEHICLE COMPLETING A THREE (3) POINT TURN WITHIN THE PROPOSED TURNING AREA AND THE VEHICLE CROSSING OF No. 55 OF EVERARD GROVE

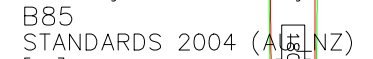
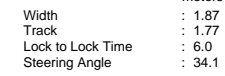
THIS MOVEMENT CAN BE COMPLETED WITHIN THE EXTENTS OF THE ROAD RESERVE



SWEPT PATH ANALYSIS PLAN - EVERARD GROVE - YRSC WASTE VEHICLE

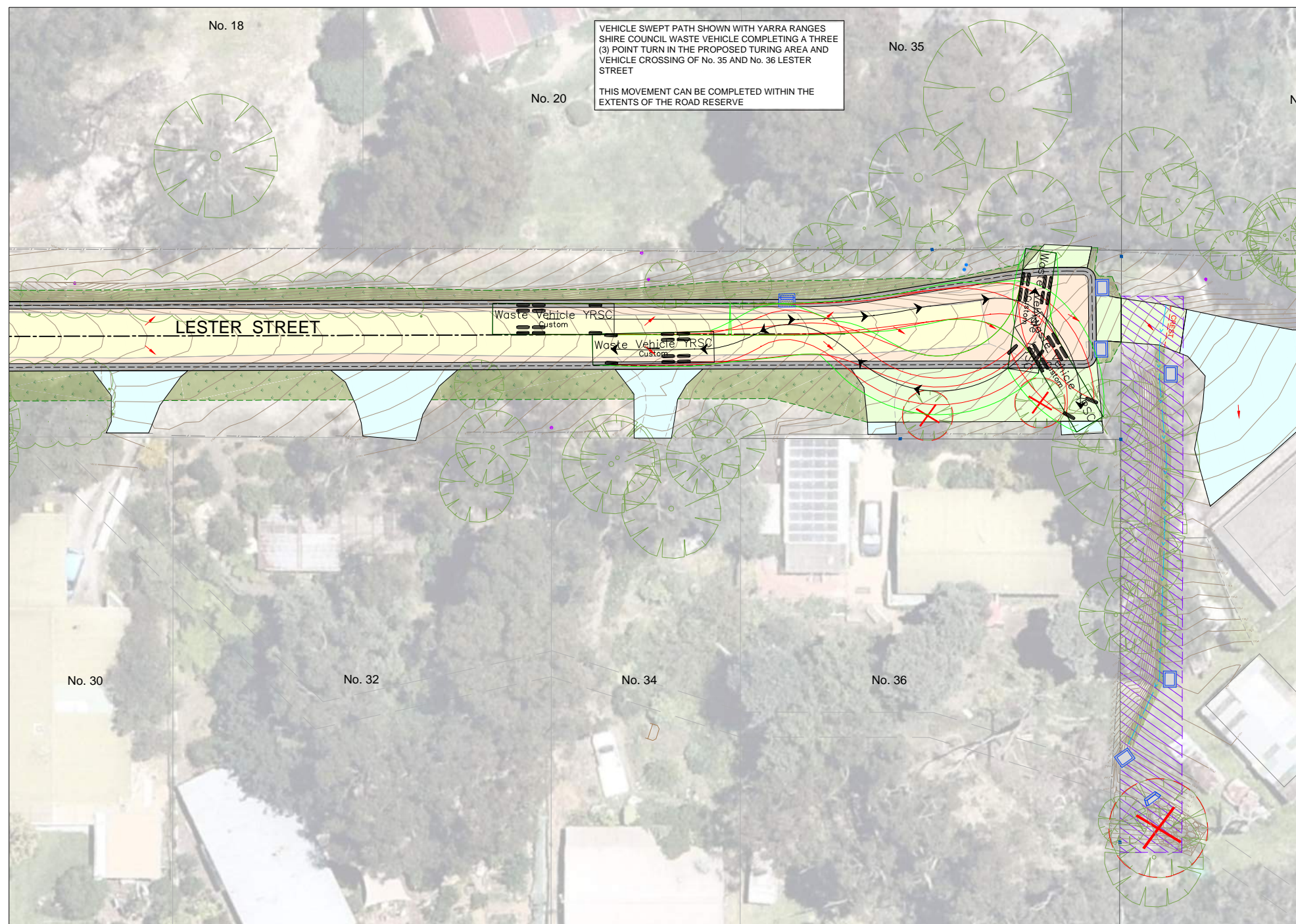
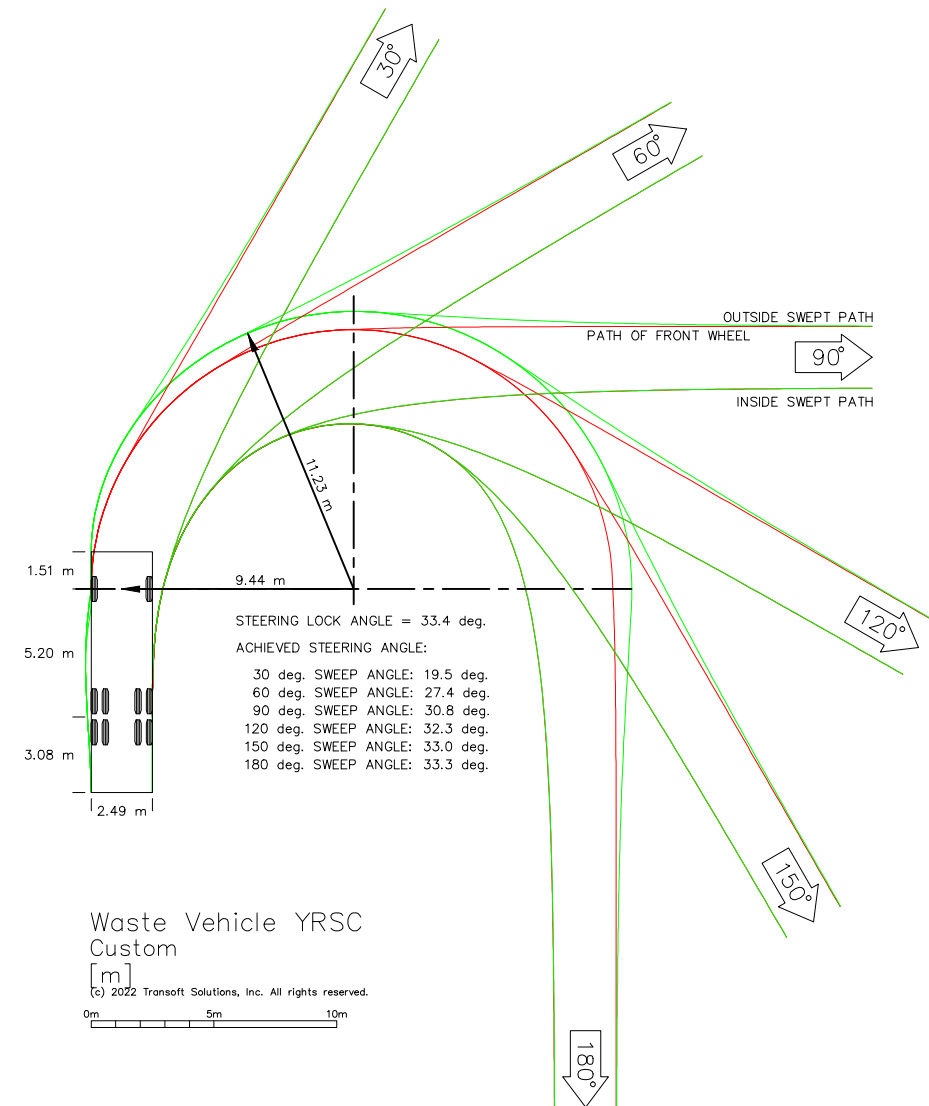


			<div>CONSULTANT ENGINEER</div> <div><div>PROCIVIL CONSULTING ENGINEERING <i>Specialist Civil Engineering Design Consultants</i> Commitment Communication Collaboration</div></div>		<div>PROCIVIL CONSULTING PTY LTD ABN 51 759 386 082 SUITE 20, 45-51 RINGWOOD ST, RINGWOOD VIC 3134 PO BOX 164, RINGWOOD VIC 3134 P: (03) 8644 6834 E: info@procivil.com.au www.procivil.com.au</div> <div><div>CIVIL ENGINEERING DESIGN RACHAEL MURRAY</div><div>TECHNICAL PEER REVIEW KURT CHAMBERLAIN</div></div> <div>REGISTERED & CHARTERED PROFESSIONAL ENGINEER CHRIS PROCTOR</div>		<div>ORIENTATION</div> <div></div> <div>OR AS SHOWN</div>		<div>ORIGINAL SCALE & SHEET SIZE AS SHOWN @ A1</div> <div>HEIGHT DATUM AHD</div> <div>COORDINATE DATUM MGA 94 ZONE 55</div> <div>SURVEY DATE 06-09-2021</div> <div>AERIAL IMAGE DATE 12-12-2020</div>		<div>LOCAL GOVERNMENT AREA SHIRE OF YARRA RANGES</div> <div>CLIENT </div> <div>CLIENT PROJECT MANAGER / CONTACT NATALIE SURSOCK YARRA RANGES SHIRE COUNCIL</div>		<div>FUNCTIONAL DESIGN</div> <div>ROAD AND DRAINAGE RECONSTRUCTION WORKS</div> <div>HENRY STREET, EVERARD GROVE AND LESTER STREET, WOORI YALLOCK</div> <div>SWEPT PATH ANALYSIS PLAN - EVERARD GROVE - YRSC WASTE VEHICLE</div>				<div>PROJECT No. PC21020</div> <div>SHEET No. 16 OF 19</div> <div>VERSION 03</div> <div>DWG No. PC21020 -16 - 03</div>	
03	FUNCTIONAL DESIGN - ISSUED FOR REVIEW		25-08-2022															
02	FUNCTIONAL DESIGN - ISSUED FOR REVIEW		09-08-2022															
01	FUNCTIONAL DESIGN - ISSUED FOR REVIEW		20-05-2022															
00	FUNCTIONAL DESIGN - ISSUED FOR REVIEW		26-04-2022															
VER	DESCRIPTION		DATE															



4 2 0 4 8 1:200 @ A1
1:400 @ A3

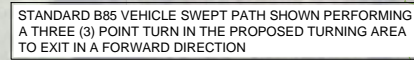
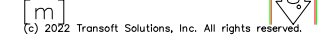
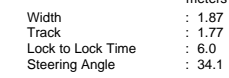
[illegible]



4 2 0 4 8

1:200 @ A1
1:400 @ A3

[illegible]

[illegible]