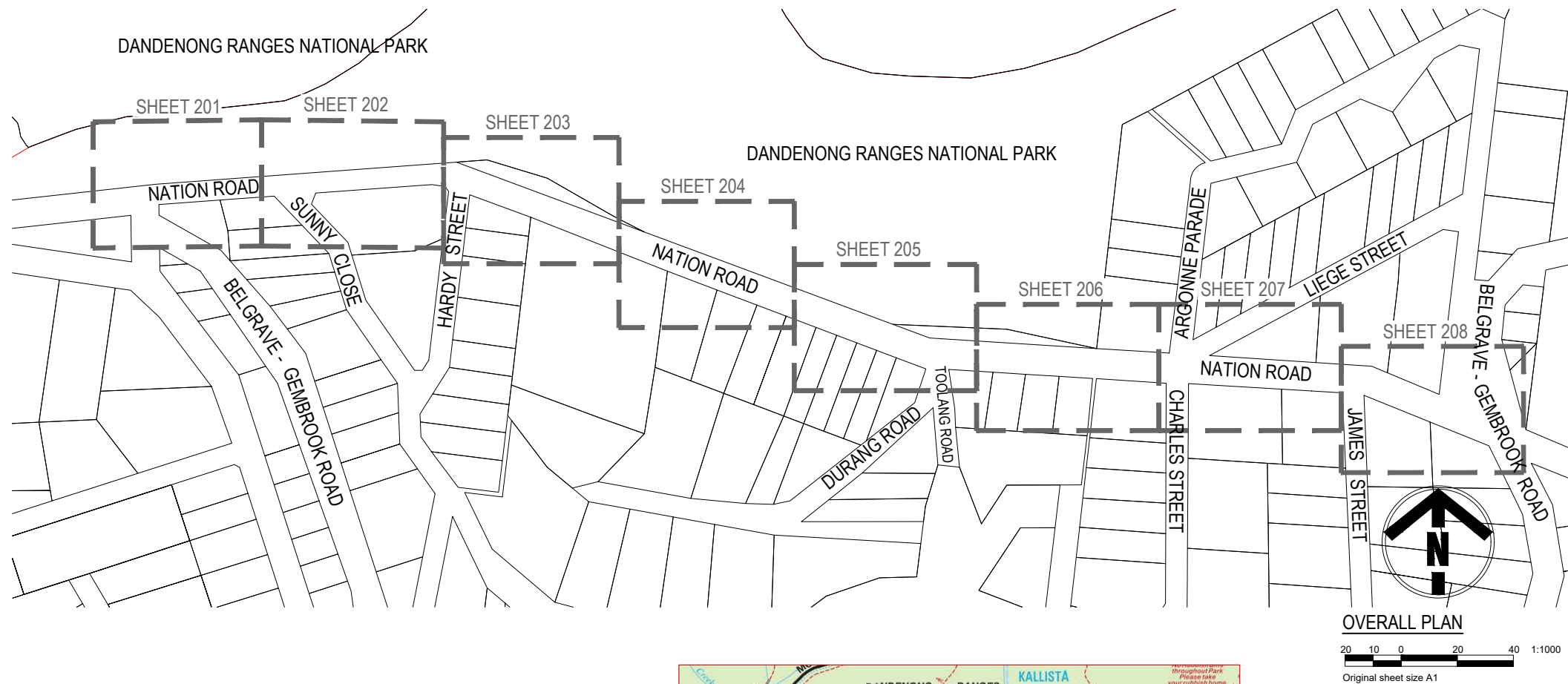


NATION ROAD, SELBY ROAD RECONSTRUCTION

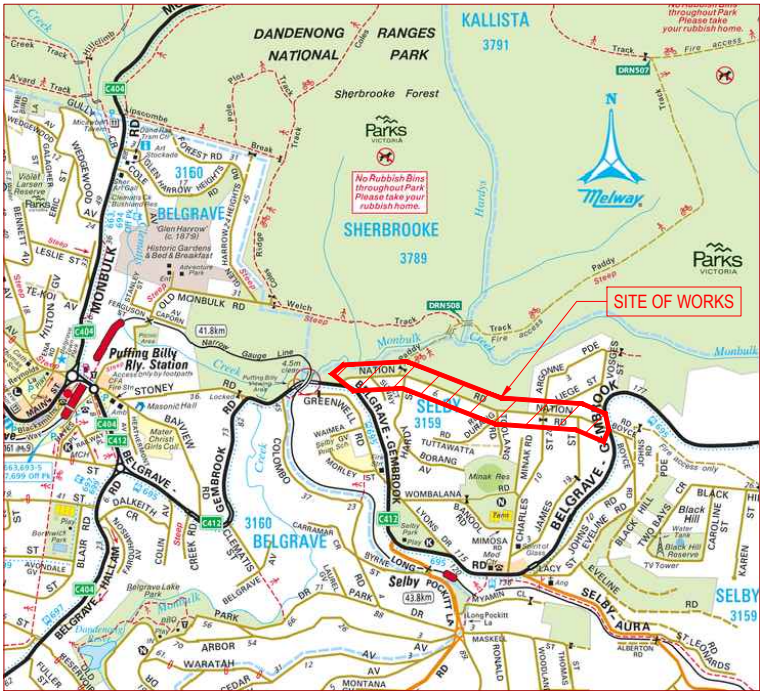


PROJECT WORKS BREAKDOWN

ROAD UPGRADE OF NATION ROAD AND INTERSECTIONS

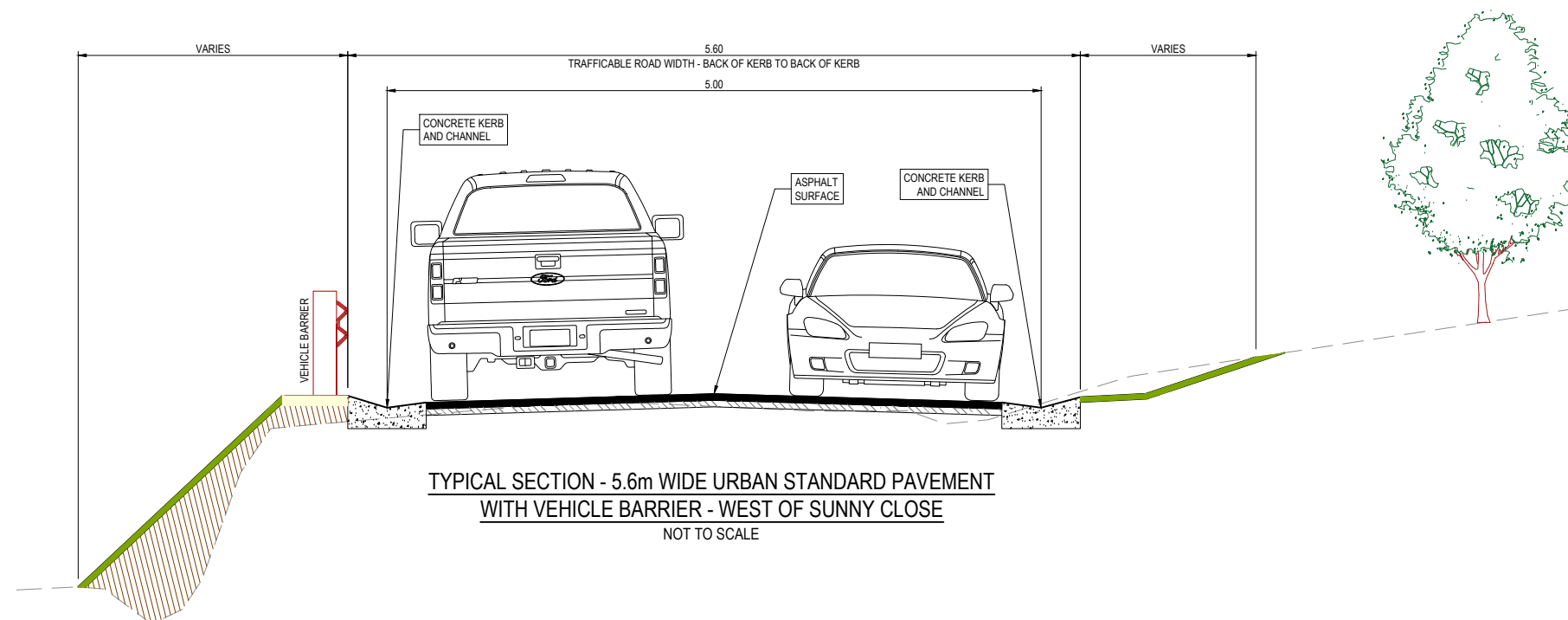
- WORKS TO INCLUDE:
- ASPHALT SURFACE PAVEMENT WITH CONCRETE KERB AND CHANNEL
 - RECONSTRUCTION AND/OR REGRADING OF EXISTING VEHICLE CROSSINGS TO MATCH NEW ROAD LEVEL
 - FORMALISATION OF INTERSECTIONS ALONG NATION ROAD
 - NEW PIPE DRAINAGE AND IMPROVEMENTS TO EXISTING DRAINAGE SYSTEM
 - UPGRADE OF DRAINAGE OUTLETS INTO NATIONAL PARK TO MINIMISE IMPACT OF STORMWATER RUNOFF


DRAWING INDEX			
SHEET NO.	TITLE	CAD FILE	VERSION NO.
C101	OVERALL PLAN, DRAWING INDEX, NOTES	26274-C1.dwg	01
C102	TYPICAL CROSS SECTIONS / PAVEMENT COMPOSITION	26274-C1.dwg	01
C201	DETAIL PLAN	26274-C2.dwg	01
C202	DETAIL PLAN	26274-C2.dwg	01
C203	DETAIL PLAN	26274-C2.dwg	01
C204	DETAIL PLAN	26274-C2.dwg	01
C205	DETAIL PLAN	26274-C2.dwg	01
C206	DETAIL PLAN	26274-C2.dwg	01
C207	DETAIL PLAN	26274-C2.dwg	01
C208	DETAIL PLAN	26274-C2.dwg	01



CONSULTATION ISSUE
FOR REVIEW PURPOSES ONLY
NOT TO BE USED FOR CONSTRUCTION

DATE	REVISION	AUTHORISED	VER.	PLAN STATUS:	SCALES:	YARRA RANGES COUNCIL																																																																																																																																																																																																																																																																																																																																																																																																																																																																																																																																																																																																																																																																																																																																																																																																																																																																																																																																																																																																																																																																																																																																																																																																																																																																																																																																																																																																																																																								
08.12.21	CONSULTATION ISSUE	AG	00	<div><div><div>WARNING</div><div>BEWARE - UNDERGROUND SERVICES</div><div>THE LOCATIONS OF EXISTING UNDERGROUND SERVICES ARE APPROXIMATE ONLY AND THEIR EXACT DEPTH AND LOCATION SHOULD BE VERIFIED AND PROVEN ON SITE BY THE APPROPRIATE SERVICE PROVIDERS PRIOR TO ANY SITE EXCAVATION. NO GUARANTEE IS GIVEN THAT ALL EXISTING SERVICES ARE SHOWN. CONTRACTOR TO TAKE PRECAUTIONS TO AVOID CONFLICTS.</div></div><div><div><div>www.dialbeforeyoudig.com.au</div><div></div><div>DIAL 1100 BEFORE YOU DIG</div></div><div><div><div>JCA Land Consultants</div><div>THE SUBDIVISION SPECIALISTS</div><div>Surveying - Engineering - Town Planning</div><div>Suite 9, 303 MaroonDAH Highway</div><div>Ringwood Victoria, Australia 3134</div><div>Email: jca@jca.com.au www.jca.com.au</div><div>Phone: 03 9735 4888</div></div><div>JCA Ref: 26274</div></div></div><div>AS SHOWN AT A1</div><th>LEVEL DATUM</th><th rowspan="5"></th><th rowspan="5">ROAD RECONSTRUCTION NATION ROAD, SELBY</th><th>CHECKED BY</th><th>SHEET NO.</th><th>VERSION</th></div>	LEVEL DATUM		ROAD RECONSTRUCTION NATION ROAD, SELBY	CHECKED BY	SHEET NO.	VERSION																																																																																																																																																																																																																																																																																																																																																																																																																																																																																																																																																																																																																																																																																																																																																																																																																																																																																																																																																																																																																																																																																																																																																																																																																																																																																																																																																																																																																																																				
09.12.21	CONSULTATION ISSUE - COUNCIL COMMENTS	AG	01		XXXX			C101	01																																																																																																																																																																																																																																																																																																																																																																																																																																																																																																																																																																																																																																																																																																																																																																																																																																																																																																																																																																																																																																																																																																																																																																																																																																																																																																																																																																																																																																																					



DATE	REVISION	AUTHORISED	VER.	PLAN STATUS:					SCALES:							
08.12.21	CONSULTATION ISSUE	AG	00						AS SHOWN AT A1							
09.12.21	CONSULTATION ISSUE - COUNCIL COMMENTS	AG	01						SURVEY BY: JCA	LEVEL DATUM		YARRA RANGES COUNCIL ROAD RECONSTRUCTION NATION ROAD, SELBY TYPICAL CROSS SECTIONS / PAVEMENT COMPOSITION		CHECKED BY	SHEET NO.	VERSION
								PLAN BY: A.CHARNOCK (JCA)	A.H.D.	XXXX				C102	01	
								CHECKED BY: A.GOULDING (JCA)		APPROVED				DRAWING NO.		
								PROJECT ENGINEER: G.McCARTHY		XXXX				2020-XXX		
								DATE: 31/07/2020	COORDINATE DATUM				MANAGER -			
								CAD FILE: 26274-C1.dwg	MGA				INFRASTRUCTURE SERVICES			



LEGEND


- ASPHALT WORKS
- CONCRETE CROSSING
- GRAVEL CROSSING
- PROPOSED KERB
- DEMOLITION
- PROPOSED DRAINAGE PIPE/PIT
- PROPOSED KERB / EDGE OF CONCRETE
- PROPOSED VEHICLE BARRIER
- EXISTING OVERHEAD CABLE
- EXISTING POWER POLE
- EXISTING TREE TO BE REMOVED

CONTINUED ON SHEET C202












- GENERAL NOTES:**
- EXISTING DRIVEWAY CULVERTS TO BE REMOVED AND REPLACED WITH NEW DRAINAGE SYSTEM
 - KERB OUTLETS AT REGULAR INTERVALS TO CONTROL RUNOFF INTO NATIONAL PARK
 - EXISTING BITUMEN AND GRAVEL CROSSINGS TO BE RE-GRADED TO SUIT NEW KERB

DETAIL PLAN
4 2 0 4 8 1:200
Original sheet size A1

CONSULTATION ISSUE
FOR REVIEW PURPOSES ONLY
NOT TO BE USED FOR CONSTRUCTION

DATE	REVISION	AUTHORISED	VER.	PLAN STATUS:	SCALES:	YARRA RANGES COUNCIL																																																																																																																																																																																																																																																																																																																																																																																																																																																																																																																																																																																																																																																																																																																																																																																																																																																																																																																																																																																																																																																																																																																																																																																																																																																																																														
08.12.21	CONSULTATION ISSUE	AG	00	<div><div><div>WARNING</div><div>BEWARE - UNDERGROUND SERVICES</div><div>THE LOCATIONS OF EXISTING UNDERGROUND SERVICES ARE APPROXIMATE ONLY AND THEIR EXACT DEPTH AND LOCATION SHOULD BE VERIFIED AND PROVEN ON SITE BY THE APPROPRIATE SERVICE PROVIDERS PRIOR TO ANY SITE EXCAVATION. NO GUARANTEE IS GIVEN THAT ALL EXISTING SERVICES ARE SHOWN. CONTRACTOR TO TAKE PRECAUTIONS TO AVOID CONFLICTS.</div></div><div><div><div><div>www.dialbeforeyoudig.com.au</div><div><div><div><div><div></div><div>DIAL 1100</div><div>BEFORE YOU DIG</div></div></div><div><div><div><div>JCA Land Consultants</div><div>THE SUBDIVISION SPECIALISTS</div><div>Surveying - Engineering - Town Planning</div><div>Suite 9, 303 Marcondah Highway</div><div>Ringwood Victoria, Australia 3134</div><div>Phone 03 9735 4888 Email jca@jcalc.com.au www.jcalc.com.au</div></div></div><div><div><div>Quality Management System ISO 9001</div><div>trust-mark.com.au</div></div></div></div><div>JCA Ref: 26274</div></div></div><div>SURVEY BY: JCA</div><div>PLAN BY: A.CHARNOCK (JCA)</div><div>CHECKED BY: A.GOULDING (JCA)</div><div>PROJECT ENGINEER: G.McCARTHY</div><div>DATE: 31/07/2020</div><div>CAD FILE: 26274-C2.dwg</div></div><div><div>LEVEL DATUM</div><div>A.H.D.</div><div>COORDINATE DATUM</div><div>MGA</div></div><div></div><div><div>ROAD RECONSTRUCTION</div><div>NATION ROAD, SELBY</div><div>DETAIL PLAN</div></div><div><div>CHECKED BY</div><div>XXXX</div><div>APPROVED</div><div>XXXX</div><div>MANAGER - INFRASTRUCTURE SERVICES</div></div><div><div>SHEET NO.</div><div>C201</div><div>DRAWING NO.</div><div>2020-XXX</div></div><div><div>VERSION</div><div>01</div></div></div></div></div>																																																																																																																																																																																																																																																																																																																																																																																																																																																																																																																																																																																																																																																																																																																																																																																																																																																																																																																																																																																																																																																																																																																																																																																																																																																																																																
09.12.21	CONSULTATION ISSUE - COUNCIL COMMENTS	AG	01																																																																																																																																																																																																																																																																																																																																																																																																																																																																																																																																																																																																																																																																																																																																																																																																																																																																																																																																																																																																																																																																																																																																																																																																																																																																																																	

[illegible][illegible]


- ### LEGEND
- | | |
|---|----------------------------------|
|  | ASPHALT WORKS |
|  | CONCRETE CROSSING |
|  | GRAVEL CROSSING |
|  | PROPOSED KERB |
|  | DEMOLITION |
|  | PROPOSED DRAINAGE PIPE/PIP |
|  | PROPOSED KERB / EDGE OF CONCRETE |
|  | PROPOSED VEHICLE BARRIER |
|  | EXISTING OVERHEAD CABLE |
|  | EXISTING POWER POLE |
|  | EXISTING TREE TO BE REMOVED |

- EXISTING DRIVEWAY CULVERTS TO BE REMOVED AND REPLACED WITH NEW DRAINAGE SYSTEM
- KERB OUTLETS AT REGULAR INTERVALS TO CONTROL RUNOFF INTO NATIONAL PARK
- EXISTING BITUMEN AND GRAVEL CROSSINGS TO BE RE-GRADED TO SUIT NEW KERB

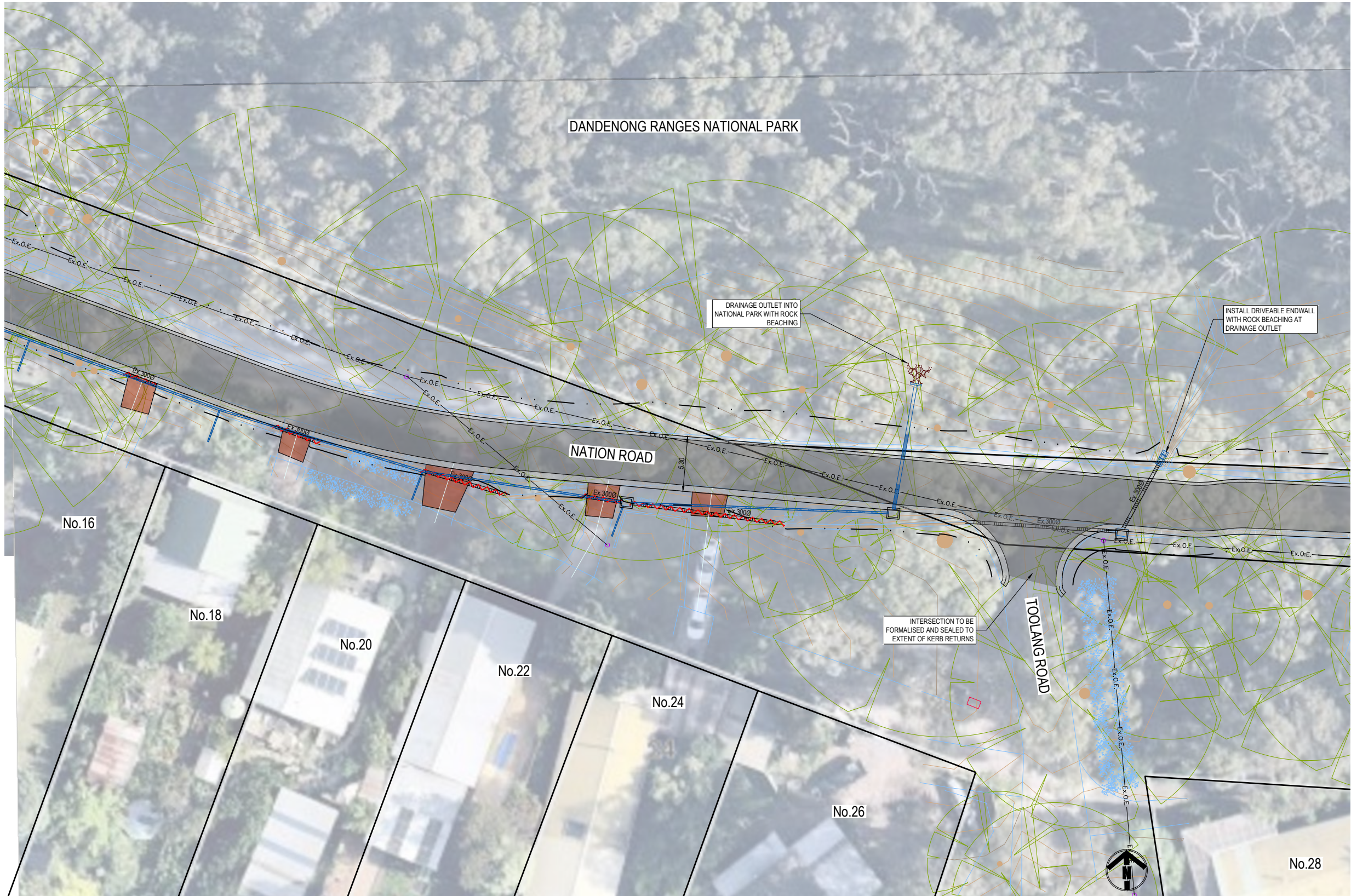
4 2 0 4 8 1:200

Original sheet size A1

CONSULTATION ISSUE
FOR REVIEW PURPOSES ONLY
NOT TO BE USED FOR CONSTRUCTION

DATE	REVISION	AUTHORISED	VER.	PLAN STATUS:	SCALES:	YARRA RANGES COUNCIL							
08.12.21	CONSULTATION ISSUE	AG	00	<div><div><div>WARNING</div><div>BEWARE - UNDERGROUND SERVICES</div><div>THE LOCATIONS OF EXISTING UNDERGROUND SERVICES ARE APPROXIMATE ONLY AND THEIR EXACT DEPTH AND LOCATION SHOULD BE VERIFIED AND PROVEN ON SITE BY THE APPROPRIATE SERVICE PROVIDERS PRIOR TO ANY SITE EXCAVATION. NO GUARANTEE IS GIVEN THAT ALL EXISTING SERVICES ARE SHOWN. CONTRACTOR TO TAKE PRECAUTIONS TO AVOID CONFLICTS</div></div><div><div><div>www.dialbeforeyoudig.com.au</div><div></div></div><div><div><div>JCA Land Consultants</div><div><div><div><div>THE SUBDIVISION SPECIALISTS</div><div>Surveying - Engineering - Town Planning</div><div>Suite 9, 303 Maroonдах Highway</div><div>Ringwood Victoria, Australia 3134</div><div>Phone 03 9735 4888 Email jca@jcalc.com.au www.jcalc.com.au</div></div></div><div><div><div><div><div><div></div><div></div></div><div><div></div><div></div></div></div><div><div></div><div></div></div><div><div></div><div></div></div></div><div><div>Quality Management System</div><div>ISO 9001</div><div>trust-mark.com.au</div></div></div></div><div>JCA Ref: 26274</div></div></div></div></div></div>	AS SHOWN AT A1	<div><div>LEVEL DATUM</div><div>A.H.D.</div><div><div><div><div></div><div></div></div><div><div></div><div></div></div></div><div><div>Yarra Ranges Council</div></div></div><div>COORDINATE DATUM</div><div>MGA</div></div>	<div><div>ROAD RECONSTRUCTION</div><div>NATION ROAD, SELBY</div><div>DETAIL PLAN</div></div>	<div><div>CHECKED BY</div><div>XXXX</div><div>APPROVED</div><div>XXXX</div><div>MANAGER -</div><div>INFRASTRUCTURE SERVICES</div></div>	<div><div>SHEET NO.</div><div>C204</div><div>DRAWING NO.</div><div>2020-XXX</div></div>	<div><div>VERSION</div><div>01</div></div>			
09.12.21	CONSULTATION ISSUE - COUNCIL COMMENTS	AG	01		SURVEY BY: JCA						PLAN BY: A.CHARNOCK (JCA)	CHECKED BY: A.GOULDING (JCA)	PROJECT ENGINEER: G.McCARTHY
					DATE: 31/07/2020						CAD FILE: 26274-C2.dwg		

CONTINUED ON SHEET C204

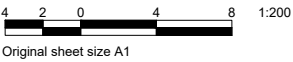


LEGEND	
	ASPHALT WORKS
	CONCRETE CROSSING
	GRAVEL CROSSING
	PROPOSED KERB
	DEMOLITION
	PROPOSED DRAINAGE PIPE/PIT
	PROPOSED KERB / EDGE OF CONCRETE
	PROPOSED VEHICLE BARRIER
	EXISTING OVERHEAD CABLE
	EXISTING POWER POLE
	EXISTING TREE TO BE REMOVED

CONTINUED ON SHEET C206

- GENERAL NOTES:
- EXISTING DRIVEWAY CULVERTS TO BE REMOVED AND REPLACED WITH NEW DRAINAGE SYSTEM
 - KERB OUTLETS AT REGULAR INTERVALS TO CONTROL RUNOFF INTO NATIONAL PARK
 - EXISTING BITUMEN AND GRAVEL CROSSINGS TO BE RE-GRADED TO SUIT NEW KERB

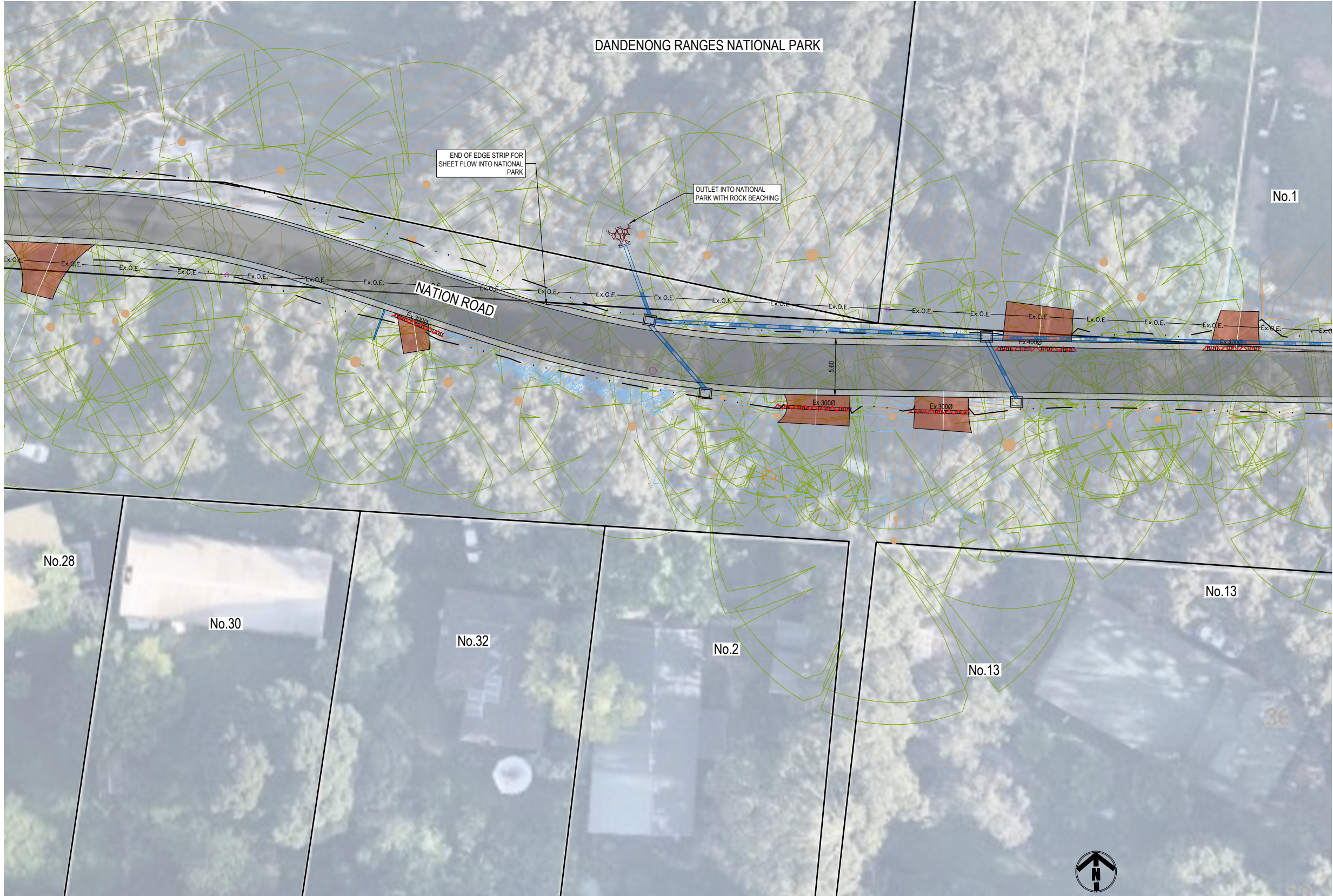
DETAIL PLAN



CONSULTATION ISSUE
FOR REVIEW PURPOSES ONLY
NOT TO BE USED FOR CONSTRUCTION

DATE	REVISION	AUTHORISED	VER.	PLAN STATUS:	YARRA RANGES COUNCIL			
08.12.21	CONSULTATION ISSUE	AG	00	CONSULTATION ISSUE (NOT FOR CONSTRUCTION)	ROAD RECONSTRUCTION NATION ROAD, SELBY			
09.12.21	CONSULTATION ISSUE - COUNCIL COMMENTS	AG	01		DETAIL PLAN			
					CHECKED BY: XXXX			
					SHEET NO. C205			
				<div><div>WARNING BEWARE - UNDERGROUND SERVICES THE LOCATIONS OF EXISTING UNDERGROUND SERVICES ARE APPROXIMATE ONLY AND THEIR EXACT DEPTH AND LOCATION SHOULD BE VERIFIED AND PROVEN ON SITE BY THE APPROPRIATE SERVICE PROVIDERS PRIOR TO ANY SITE EXCAVATION. NO GUARANTEE IS GIVEN THAT ALL EXISTING SERVICES ARE SHOWN. CONTRACTOR TO TAKE PRECAUTIONS TO AVOID CONFLICTS.</div><div>DIAL 1100 BEFORE YOU DIG</div><div>JCA Land Consultants THE SUBDIVISION SPECIALISTS Surveying - Engineering - Town Planning Suite 9, 303 Marondah Highway Ringwood Victoria, Australia 3134 Phone 03 9735 4888 Email jca@jca.com.au www.jca.com.au</div></div>	APPROVED: XXXX			
					DRAWING NO. 2020-XXX			
					MANAGER - INFRASTRUCTURE SERVICES			
					VERSION 01			

CONTINUED ON SHEET C205



CONTINUED ON SHEET C207

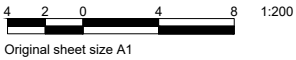
LEGEND

- ASPHALT WORKS
- CONCRETE CROSSING
- GRAVEL CROSSING
- PROPOSED KERB
- DEMOLITION
- PROPOSED DRAINAGE PIPE/PIT
- PROPOSED KERB / EDGE OF CONCRETE
- PROPOSED VEHICLE BARRIER
- EXISTING OVERHEAD CABLE
- EXISTING POWER POLE
- EXISTING TREE TO BE REMOVED


- GENERAL NOTES:**
- EXISTING DRIVEWAY CULVERTS TO BE REMOVED AND REPLACED WITH NEW DRAINAGE SYSTEM
 - KERB OUTLETS AT REGULAR INTERVALS TO CONTROL RUNOFF INTO NATIONAL PARK
 - EXISTING BITUMEN AND GRAVEL CROSSINGS TO BE RE-GRADED TO SUIT NEW KERB



DETAIL PLAN



CONSULTATION ISSUE
FOR REVIEW PURPOSES ONLY
NOT TO BE USED FOR CONSTRUCTION

DATE		REVISION	AUTHORISED	VER.	PLAN STATUS:	CONSULTATION ISSUE (NOT FOR CONSTRUCTION)				SCALES:		YARRA RANGES COUNCIL									
08.12.21		CONSULTATION ISSUE	AG	00	<div><div><div>WARNING</div><div>BEWARE - UNDERGROUND SERVICES</div><div>THE LOCATIONS OF EXISTING UNDERGROUND SERVICES ARE APPROXIMATE ONLY AND THEIR EXACT DEPTH AND LOCATION SHOULD BE VERIFIED AND PROVEN ON SITE BY THE APPROPRIATE SERVICE PROVIDERS PRIOR TO ANY SITE EXCAVATION. NO GUARANTEE IS GIVEN THAT ALL EXISTING SERVICES ARE SHOWN. CONTRACTOR TO TAKE PRECAUTIONS TO AVOID CONFLICTS.</div></div><div><div>www.dialbeforeyoudig.com.au</div><div><div><div></div><div>DIAL 1100</div><div>BEFORE YOU DIG</div></div></div><div><div><div>JCA Land Consultants</div><div>THE SUBDIVISION SPECIALISTS</div><div>Surveying - Engineering - Town Planning</div><div>Suite 9, 303 Marondah Highway</div><div>Ringwood Victoria, Australia 3134</div><div>Phone 03 9735 4888 Email jca@jca.com.au www.jca.com.au</div></div><div>JCA Ref: 26274</div></div></div></div>	AS SHOWN AT A1		SURVEY BY: JCA		<div>LEVEL DATUM</div> <div>A.H.D.</div> <div>COORDINATE DATUM</div> <div>MGA</div>	<div></div>	ROAD RECONSTRUCTION				CHECKED BY	SHEET NO.	VERSION			
09.12.21		CONSULTATION ISSUE - COUNCIL COMMENTS	AG	01		NATION ROAD, SELBY						XXXX	C206	01							
												APPROVED	DRAWING NO.								
												XXXX	2020-XXX								
												MANAGER - INFRASTRUCTURE SERVICES									

CONTINUED ON SHEET C206

CONTINUED ON SHEET C208



LEGEND

- ASPHALT WORKS
- CONCRETE CROSSING
- GRAVEL CROSSING
- PROPOSED KERB
- DEMOLITION
- PROPOSED DRAINAGE PIPE/PIT
- PROPOSED KERB / EDGE OF CONCRETE
- PROPOSED VEHICLE BARRIER
- EXISTING OVERHEAD CABLE
- EXISTING POWER POLE
- EXISTING TREE TO BE REMOVED




- GENERAL NOTES:**
- EXISTING DRIVEWAY CULVERTS TO BE REMOVED AND REPLACED WITH NEW DRAINAGE SYSTEM
 - KERB OUTLETS AT REGULAR INTERVALS TO CONTROL RUNOFF INTO NATIONAL PARK
 - EXISTING BITUMEN AND GRAVEL CROSSINGS TO BE RE-GRADED TO SUIT NEW KERB

DETAIL PLAN

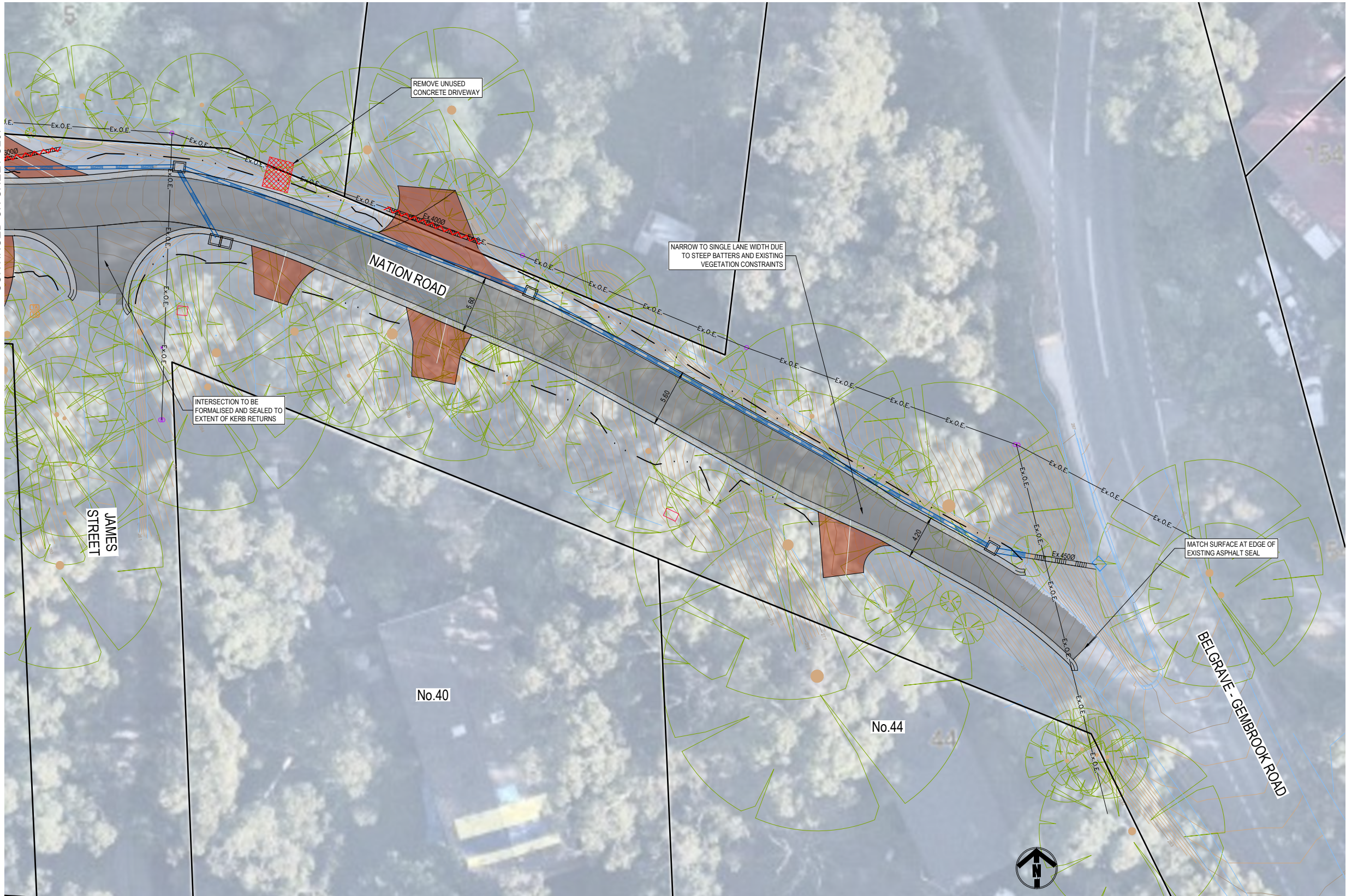
4 2 0 4 8 1:200

Original sheet size A1

CONSULTATION ISSUE
FOR REVIEW PURPOSES ONLY
NOT TO BE USED FOR CONSTRUCTION

DATE	REVISION	AUTHORISED	VER.	PLAN STATUS:	SCALES:	YARRA RANGES COUNCIL					
08.12.21	CONSULTATION ISSUE	AG	00	<div><div><div>WARNING</div><div>BEWARE - UNDERGROUND SERVICES</div><div>THE LOCATIONS OF EXISTING UNDERGROUND SERVICES ARE APPROXIMATE ONLY AND THEIR EXACT DEPTH AND LOCATION SHOULD BE VERIFIED AND PROVEN ON SITE BY THE APPROPRIATE SERVICE PROVIDERS PRIOR TO ANY SITE EXCAVATION. NO GUARANTEE IS GIVEN THAT ALL EXISTING SERVICES ARE SHOWN. CONTRACTOR TO TAKE PRECAUTIONS TO AVOID CONFLICTS.</div></div><div><div><div><div>www.dialbeforeyoudig.com.au</div><div></div></div><div><div><div>JCA Land Consultants</div><div>THE SUBDIVISION SPECIALISTS</div><div>Surveying - Engineering - Town Planning</div><div>Suite 9, 303 Marcondah Highway</div><div>Ringswood Victoria, Australia 3134</div><div>Phone 03 9735 4888 Email jca@jca.com.au www.jca.com.au</div></div><div><div></div><div>Quality Management System ISO 9001 trustmark.com.au</div></div></div><div>JCA Ref: 26274</div></div></div></div>	AS SHOWN AT A1	ROAD RECONSTRUCTION NATION ROAD, SELBY					
09.12.21	CONSULTATION ISSUE - COUNCIL COMMENTS	AG	01		SURVEY BY: JCA	LEVEL DATUM		CHECKED BY XXXX	SHEET NO. C207	VERSION 01	
					PLAN BY: A.CHARNOCK (JCA)	A.H.D.					
					CHECKED BY: A.GOULDING (JCA)	COORDINATE DATUM					
				PROJECT ENGINEER: G.McCARTHY	MGA						
				DATE: 31/07/2020			APPROVED XXXX	DRAWING NO. 2020-XXX			
				CAD FILE: 26274-C2.dwg			MANAGER - INFRASTRUCTURE SERVICES				

CONTINUED ON SHEET C207



LEGEND

- ASPHALT WORKS
- CONCRETE CROSSING
- GRAVEL CROSSING
- PROPOSED KERB
- DEMOLITION
- PROPOSED DRAINAGE PIPE/PIT
- PROPOSED KERB / EDGE OF CONCRETE
- PROPOSED VEHICLE BARRIER
- EXISTING OVERHEAD CABLE
- EXISTING POWER POLE
- EXISTING TREE TO BE REMOVED



- GENERAL NOTES:**
- EXISTING DRIVEWAY CULVERTS TO BE REMOVED AND REPLACED WITH NEW DRAINAGE SYSTEM
 - KERB OUTLETS AT REGULAR INTERVALS TO CONTROL RUNOFF INTO NATIONAL PARK
 - EXISTING BITUMEN AND GRAVEL CROSSINGS TO BE RE-GRADED TO SUIT NEW KERB

DETAIL PLAN

4 2 0 4 8 1:200

Original sheet size A1

CONSULTATION ISSUE
FOR REVIEW PURPOSES ONLY
NOT TO BE USED FOR CONSTRUCTION

DATE	REVISION	AUTHORISED	VER.	PLAN STATUS:	SCALES:	LEVEL DATUM	COORDINATE DATUM	YARRA RANGES COUNCIL		
08.12.21	CONSULTATION ISSUE	AG	00	CONSULTATION ISSUE (NOT FOR CONSTRUCTION) WARNING BEWARE - UNDERGROUND SERVICES THE LOCATIONS OF EXISTING UNDERGROUND SERVICES ARE APPROXIMATE ONLY AND THEIR EXACT DEPTH AND LOCATION SHOULD BE VERIFIED AND PROVEN ON SITE BY THE APPROPRIATE SERVICE PROVIDERS PRIOR TO ANY SITE EXCAVATION. NO GUARANTEE IS GIVEN THAT ALL EXISTING SERVICES ARE SHOWN. CONTRACTOR TO TAKE PRECAUTIONS TO AVOID CONFLICTS.  	AS SHOWN AT A1	A.H.D.	ROAD RECONSTRUCTION NATION ROAD, SELBY	CHECKED BY	SHEET NO.	VERSION
09.12.21	CONSULTATION ISSUE - COUNCIL COMMENTS	AG	01		SURVEY BY: JCA			XXXX	C208	01
					PLAN BY: A.CHARNOCK (JCA)			APPROVED	DRAWING NO.	
					CHECKED BY: A.GOULding (JCA)			XXXX	2020-XXX	
					PROJECT ENGINEER: G.McCARTHY			MANAGER - INFRASTRUCTURE SERVICES		
					DATE: 31/07/2020					
					CAD FILE: 26274-C2.dwg					