

NOTES

- GENERAL**
- THE CONTRACTOR IS TO VERIFY THE LOCATION AND DEPTH OF ALL UTILITY SERVICES PRIOR TO CARRYING OUT WORKS BY TELEPHONING 1100 "DIAL BEFORE YOU DIG".
 - DISCREPANCIES BETWEEN PLANS AND EXISTING CONDITIONS ARE TO BE REPORTED IMMEDIATELY TO THE COUNCIL'S SUPERVISING ENGINEER.
 - ALL SURPLUS EXCAVATED MATERIAL REMAINS THE PROPERTY OF THE CONTRACTOR UNLESS SPECIFIED OTHERWISE OR ADVISED BY THE COUNCIL'S SUPERVISING ENGINEER.
 - "REMOVE" SHALL MEAN REMOVE OFF-SITE AND DISPOSE OF AT AN APPROVED DISPOSAL SITE AT THE CONTRACTOR'S EXPENSE, UNLESS SPECIFIED OTHERWISE.
 - ON COMPLETION OF CONSTRUCTION ALL WORK AREA ARE TO BE CLEANED UP & REINSTATED TO THE SATISFACTION OF THE COUNCIL'S SUPERVISING ENGINEER.
- PAVEMENT**
- ROAD CROSSFALL TO BE 1 in 36 FALLING TOWARDS THE TABLE DRAIN OR KERB AND CHANNEL UNLESS SPECIFIED OTHERWISE.
 - AT NEW FILL AREAS THE TOPSOIL SHALL BE STRIPPED AND FILLING MATERIAL PLACED IN 150mm THICK LAYER AND COMPACTED TO 95% A.A.S.H.O. COMPACTION TEST, THE TOPSOIL IS THEN RE-SPREAD ON THE BATTER AREAS.
 - NEW CONCRETE FOOTPATH PAVING TO BE 32 MPa STRENGTH.
 - TACTILE GROUND SURFACE INDICATOR (TGSi) PAVERS ARE TO BE 300mm x 300mm x 40mm PRE-CAST CONCRETE PAVERS AND SHALL HAVE A MINIMUM LUMINANCE CONTRAST OF 30% COMPARED TO THE AMOUNT OF LIGHT REFLECTED FROM THE ADJACENT SURFACE.
- ROADSIDE**
- EXISTING DRIVEWAY ENTRANCES TO BE REINSTATED AND SEALED FOR 1.0m FROM EDGE OF SEAL WITH 50mm COMPACTED DEPTH 10mm TYPE N ASPHALT ON A BASE OF 100mm COMPACTED DEPTH CLASS 2 FINE CRUSHED ROCK.
 - EXISTING DRIVEWAYS ARE TO BE REINSTATED FROM BACK OF KERB OR EDGE OF SEAL AT A MAXIMUM GRADE OF 1 in 8 FOR 2.0m THEN 1 in 4 THEREAFTER WITH A TRANSITION OF 1 in 6 FOR 2.0m IS PREFERRED WHERE POSSIBLE AS PER:
 - GRAVEL DRIVEWAY WITH 50mm COMPACTED DEPTH OF 3% CEMENT TREATED CRUSHED ROCK UNLESS SPECIFIED OTHERWISE.
 - ASPHALT DRIVEWAYS WITH 50mm COMPACTED DEPTH 10mm NOMINAL SIZE ASPHALT ON A BASE OF 100mm COMPACTED DEPTH CLASS 2 FINE CRUSHED ROCK.
 - CONCRETE DRIVEWAYS WITH 150mm DEPTH CONCRETE PAVING ON A BASE OF 50mm COMPACTED DEPTH CLASS 2 FINE CRUSHED ROCK.
 - BRICK PAVER DRIVEWAYS WITH SUITABLE HEAVY DUTY BRICK PAVERS ON 30mm OF BEDDING SAND ON A BASE OF 100mm COMPACTED DEPTH CLASS 2 FINE CRUSHED ROCK.
 - TABLE DRAIN TO BE CLEANED, REDEFINED OR DEFINED AS NECESSARY ALONG THE HIGH SIDE OF THE ROADWAY, REFER TO TYPE OF SECTION FOR TABLE DRAIN PROFILE, MINIMUM DEPTH 300mm.

02	FUNCTIONAL DESIGN - ISSUED FOR REVIEW	25-11-2021
01	DRAFT FUNCTIONAL DESIGN - ISSUED FOR REVIEW	25-10-2021
00	FUNCTIONAL DESIGN - ISSUED FOR REVIEW	30-04-2021
VER	DESCRIPTION	DATE

CONSULTANT ENGINEER

PROCIVIL
CONSULTING ENGINEERING

Specialist Civil Engineering Design Consultants

Commitment | Communication | Collaboration

PROCIVIL CONSULTING PTY LTD
ABN 51 759 386 082
SUITE 9, 12 MAROONDAH HWY, RINGWOOD VIC 3134
PO BOX 164, RINGWOOD VIC 3134
P: (03) 8644 6834
E: info@procivil.com.au
www.procivil.com.au

CIVIL ENGINEERING DESIGN
LUKE WHITFIELD

TECHNICAL PEER REVIEW
KURT CHAMBERLAIN

REGISTERED & CHARTERED PROFESSIONAL ENGINEER
CHRIS PROCTOR

ORIENTATION

OR AS SHOWN

ORIGINAL SCALE & SHEET SIZE
AS SHOWN @ A1

HEIGHT DATUM
AHD

COORDINATE DATUM
MGA 94 ZONE 55

SURVEY DATE
12-10-2021

AERIAL IMAGE DATE
23-12-2018

LOCAL GOVERNMENT AREA
SHIRE OF YARRA RANGES

CLIENT

CLIENT PROJECT MANAGER / CONTACT
PETROS INDOS | GRANT MCCARTHY

FUNCTIONAL DESIGN

ROAD & DRAINAGE RECONSTRUCTION WORKS
ELAMO ROAD, HEALESVILLE
(BETWEEN 21-49 ELAMO ROAD)

TITLE SHEET - LOCALITY PLAN, GENERAL NOTES, DETAILS & DRAWING INDEX

PROJECT No.
PC20010C

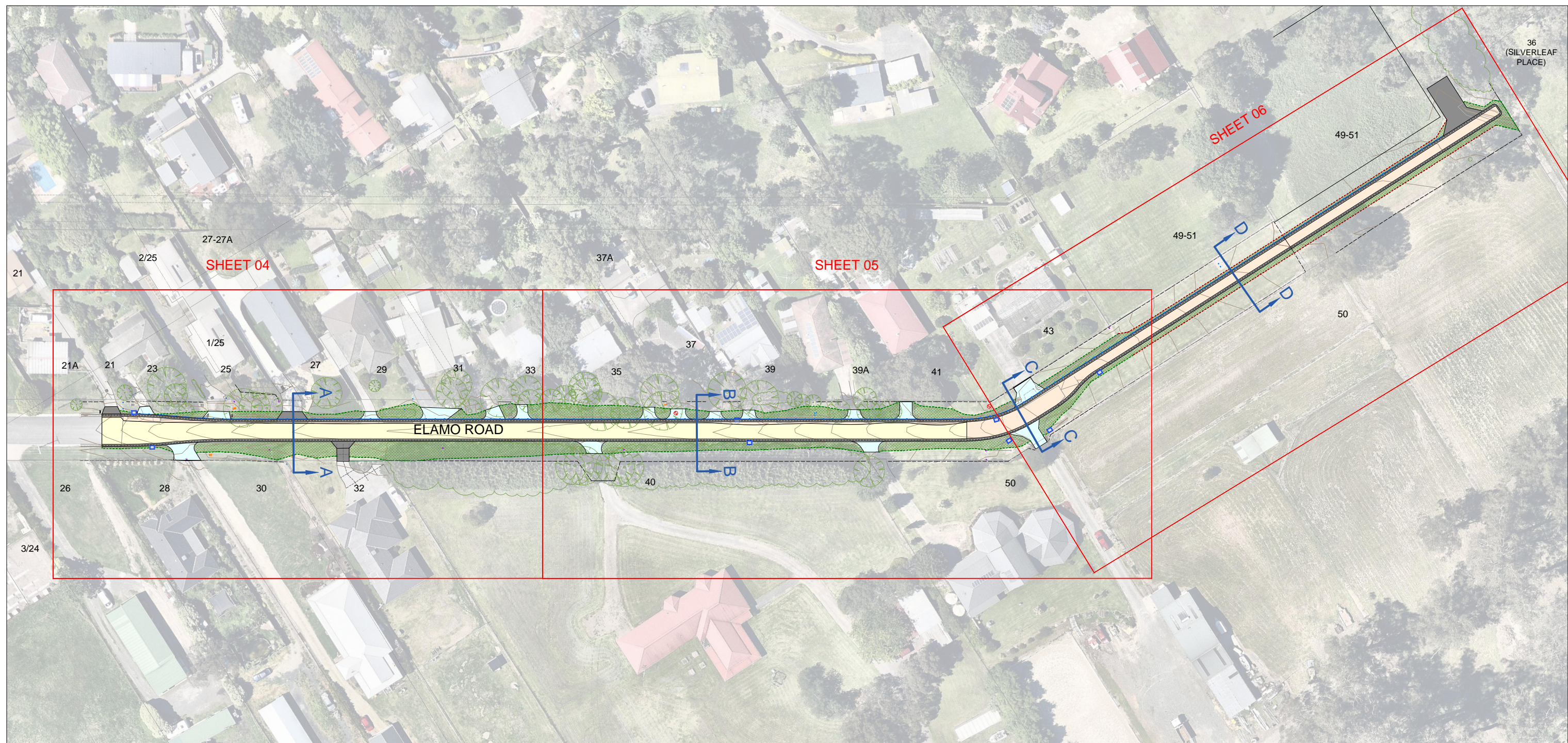
SHEET No.
01 OF 07

VERSION
02

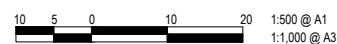
DWG No.
PC20010C-01-02



WARNING
BEWARE OF UNDERGROUND SERVICES
THE LOCATION OF EXISTING UNDERGROUND SERVICES ARE APPROXIMATE
ONLY AND THEIR EXACT POSITION SHOULD BE PROVEN ON SITE. NO
GUARANTEE IS GIVEN THAT ALL EXISTING SERVICES ARE SHOWN.



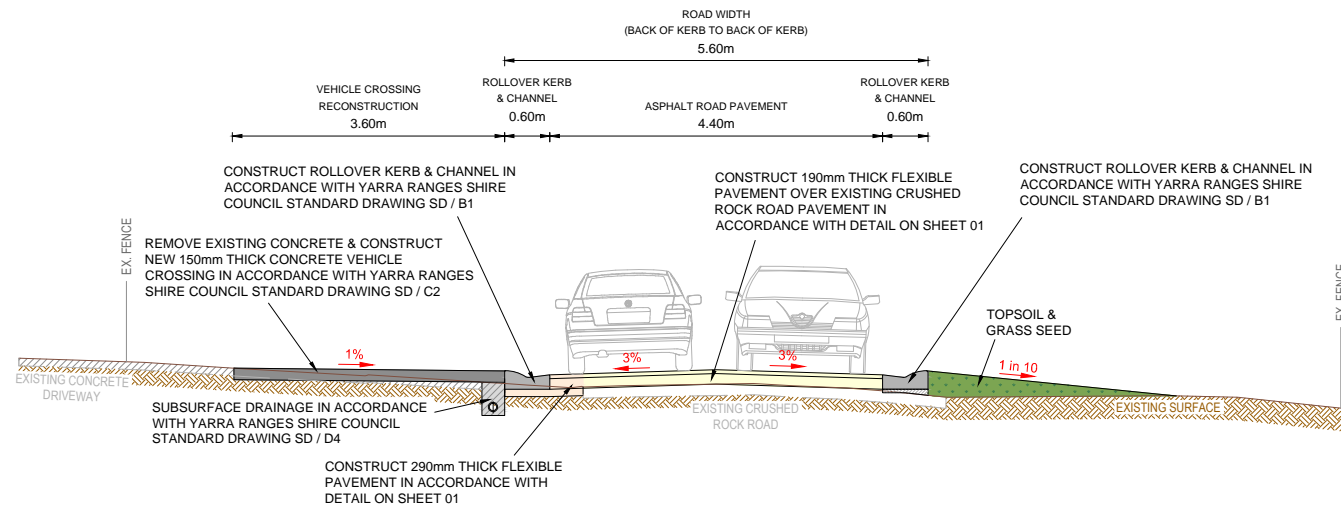
OVERALL PLAN



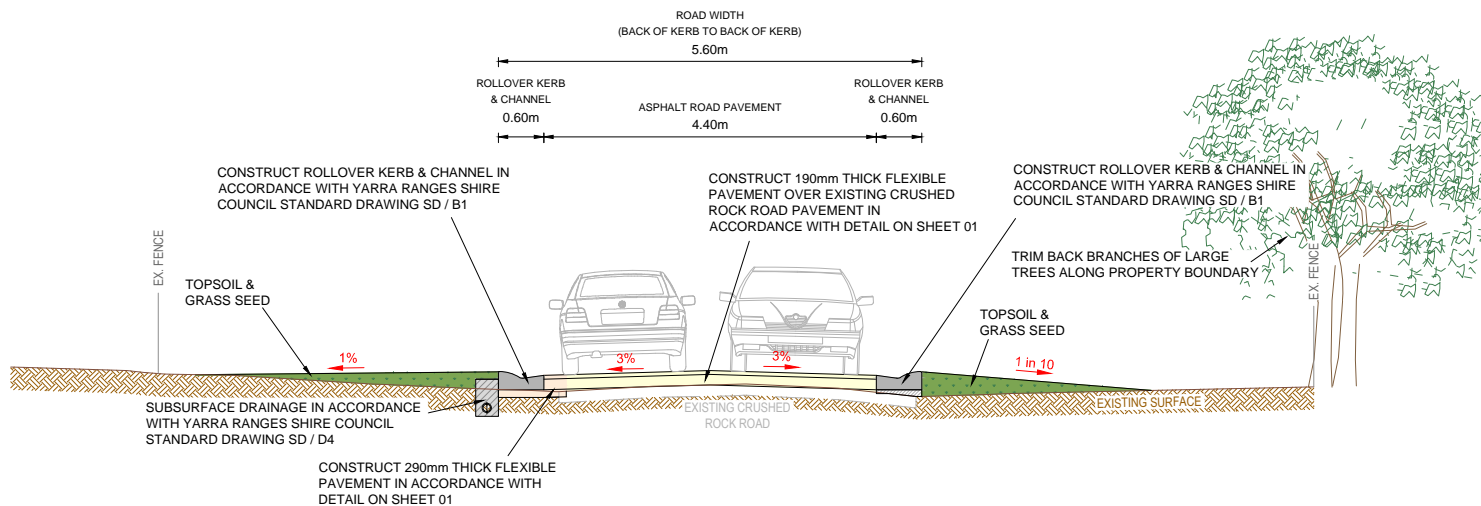
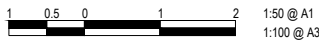
		CONSULTANT ENGINEER		PROCIVIL CONSULTING ENGINEERING		PROCIVIL CONSULTING PTY LTD ABN 51 759 386 092 SUITE 9, 12 MAROONDAH HWY, RINGWOOD VIC 31134 PO BOX 164, RINGWOOD VIC 31134 P: (03) 8644 6834 E: info@procivil.com.au www.procivil.com.au		ORIENTATION		ORIGINAL SCALE & SHEET SIZE AS SHOWN @ A1		LOCAL GOVERNMENT AREA SHIRE OF YARRA RANGES		FUNCTIONAL DESIGN		PROJECT No. PC20010C	
				Specialist Civil Engineering Design Consultants		CIVIL ENGINEERING DESIGN LUKE WHITFIELD		TECHNICAL PEER REVIEW KURT CHAMBERLAIN		HEIGHT DATUM AHD		CLIENT		ROAD & DRAINAGE RECONSTRUCTION WORKS		SHEET No. 02 OF 07	
				Commitment Communication Collaboration		REGISTERED & CHARTERED PROFESSIONAL ENGINEER CHRIS PROCTOR		OR AS SHOWN		COORDINATE DATUM MGA 94 ZONE 55		Yarra Ranges Council		ELAMO ROAD, HEALESVILLE (BETWEEN 21-49 ELAMO ROAD)		VERSION 02	
										SURVEY DATE 12-10-2021		CLIENT PROJECT MANAGER / CONTACT PETROS INDOS GRANT MCCARTHY		OVERALL PLAN		DWG No. PC20010C-02-02	
										AERIAL IMAGE DATE 23-12-2018							



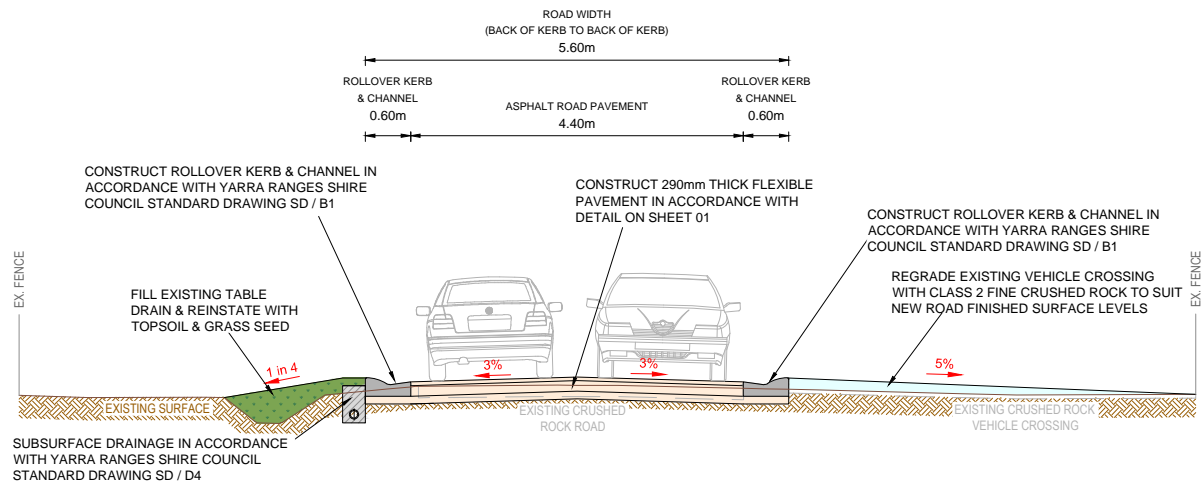
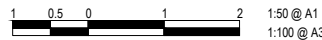
WARNING
BEWARE OF UNDERGROUND SERVICES
THE LOCATION OF EXISTING UNDERGROUND SERVICES ARE APPROXIMATE ONLY AND THEIR EXACT POSITION SHOULD BE PROVEN ON SITE. NO GUARANTEE IS GIVEN THAT ALL EXISTING SERVICES ARE SHOWN.



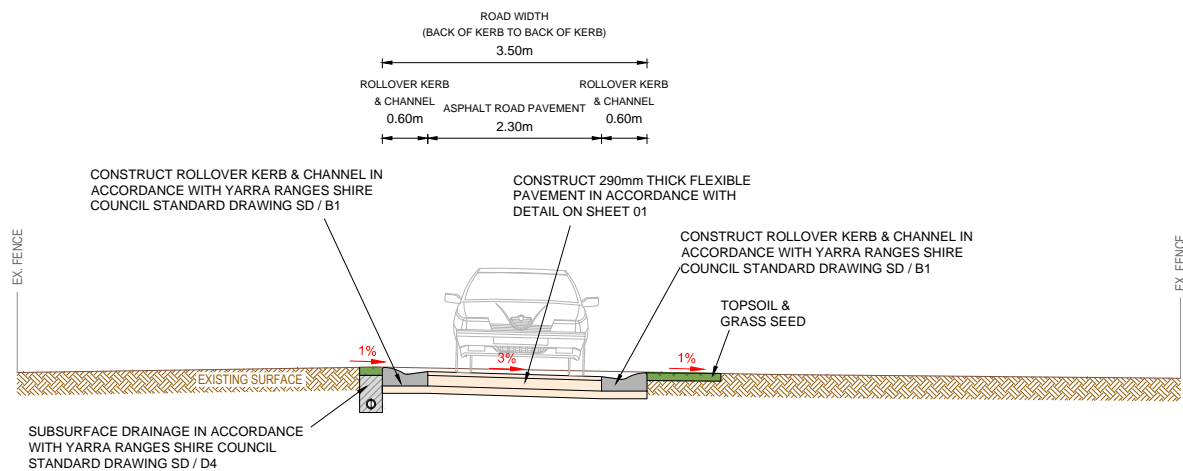
SECTION A-A



SECTION B-B



SECTION C-C



SECTION D-D



VER	DESCRIPTION	DATE
02	FUNCTIONAL DESIGN - ISSUED FOR REVIEW	25-11-2021
01	DRAFT FUNCTIONAL DESIGN - ISSUED FOR REVIEW	25-10-2021
00	FUNCTIONAL DESIGN - ISSUED FOR REVIEW	30-04-2021

CONSULTANT ENGINEER

PROCIVIL
CONSULTING ENGINEERING

Specialist Civil Engineering Design Consultants

Commitment | Communication | Collaboration

PROCIVIL CONSULTING PTY LTD
ABN 51 759 386 082
SUITE 9, 12 MAROONDAA HWY, RINGWOOD VIC 3134
PO BOX 164, RINGWOOD VIC 3134
P: (03) 8644 6834
E: info@procivil.com.au
www.procivil.com.au

CIVIL ENGINEERING DESIGN LUKE WHITFIELD	TECHNICAL PEER REVIEW KURT CHAMBERLAIN
REGISTERED & CHARTERED PROFESSIONAL ENGINEER CHRIS PROCTOR	

ORIENTATION

OR AS SHOWN

ORIGINAL SCALE & SHEET SIZE
AS SHOWN @ A1

HEIGHT DATUM
AHD

COORDINATE DATUM
MGA 94 ZONE 55

SURVEY DATE
12-10-2021

AERIAL IMAGE DATE
23-12-2018

LOCAL GOVERNMENT AREA
SHIRE OF YARRA RANGES

CLIENT

CLIENT PROJECT MANAGER / CONTACT
PETROS INDOS | GRANT MCCARTHY

FUNCTIONAL DESIGN

ROAD & DRAINAGE RECONSTRUCTION WORKS

ELAMO ROAD, HEALESVILLE
(BETWEEN 21-49 ELAMO ROAD)

SECTIONS A-A, B-B & C-C

PROJECT No.
PC20010C

SHEET No.
03 OF 07

VERSION
02

DWG No.
PC20010C-03-02

LEGEND

- OVERLAY EXISTING PAVEMENT - 190mm THICK FLEXIBLE PAVEMENT IN ACCORDANCE WITH DETAIL ON SHEET 01

FULL DEPTH PAVEMENT - 290mm THICK FLEXIBLE PAVEMENT IN ACCORDANCE WITH DETAIL ON SHEET 01

LAWN AREA TO BE REINSTATED WITH YARRA RANGES SHIRE COUNCIL APPROVED TOPSOIL AND SEED

150mm MINIMUM THICKNESS CONCRETE VEHICLE CROSSING GENERALLY IN ACCORDANCE WITH YARRA RANGES SHIRE COUNCIL STANDARD DRAWING SD / C2

100mm MINIMUM THICKNESS CLASS 2 CRUSHED ROCK VEHICLE CROSSING GENERALLY IN ACCORDANCE WITH YARRA RANGES SHIRE COUNCIL STANDARD DRAWING SD / C2
- PROPOSED PAVEMENT GRADE

EXISTING DRAINAGE PIPE

2

NEW DRAINAGE PIT WITH PIT NUMBER AND PIPE

DIRECTION OF CHANNEL FLOW

SD

SUBSURFACE DRAINAGE IN ACCORDANCE WITH YARRA RANGES SHIRE COUNCIL STANDARD DRAWING SD / D4

SWALE INVERT

PAVEMENT LINE MARKING

NEW CONCRETE KERB AND CHANNEL IN ACCORDANCE WITH YARRA RANGES SHIRE COUNCIL STANDARD DRAWING SD / B1

NEW CONCRETE SLEEPER RETAINING WALL GENERALLY IN ACCORDANCE WITH YARRA RANGES SHIRE COUNCIL STANDARD DRAWING SD / F5
- EX W

EXISTING WATER

EX G

EXISTING GAS

EX S

EXISTING SEWER

EX T

EXISTING TELECOMMUNICATIONS

EX E

EXISTING UNDERGROUND ELECTRICITY

46

EXISTING CONTOUR MAJOR (1.0m)

46

EXISTING CONTOUR MINOR (0.2m)

46

FINISHED SURFACE CONTOUR MAJOR (1.0m)

46

FINISHED SURFACE CONTOUR MINOR (0.2m)

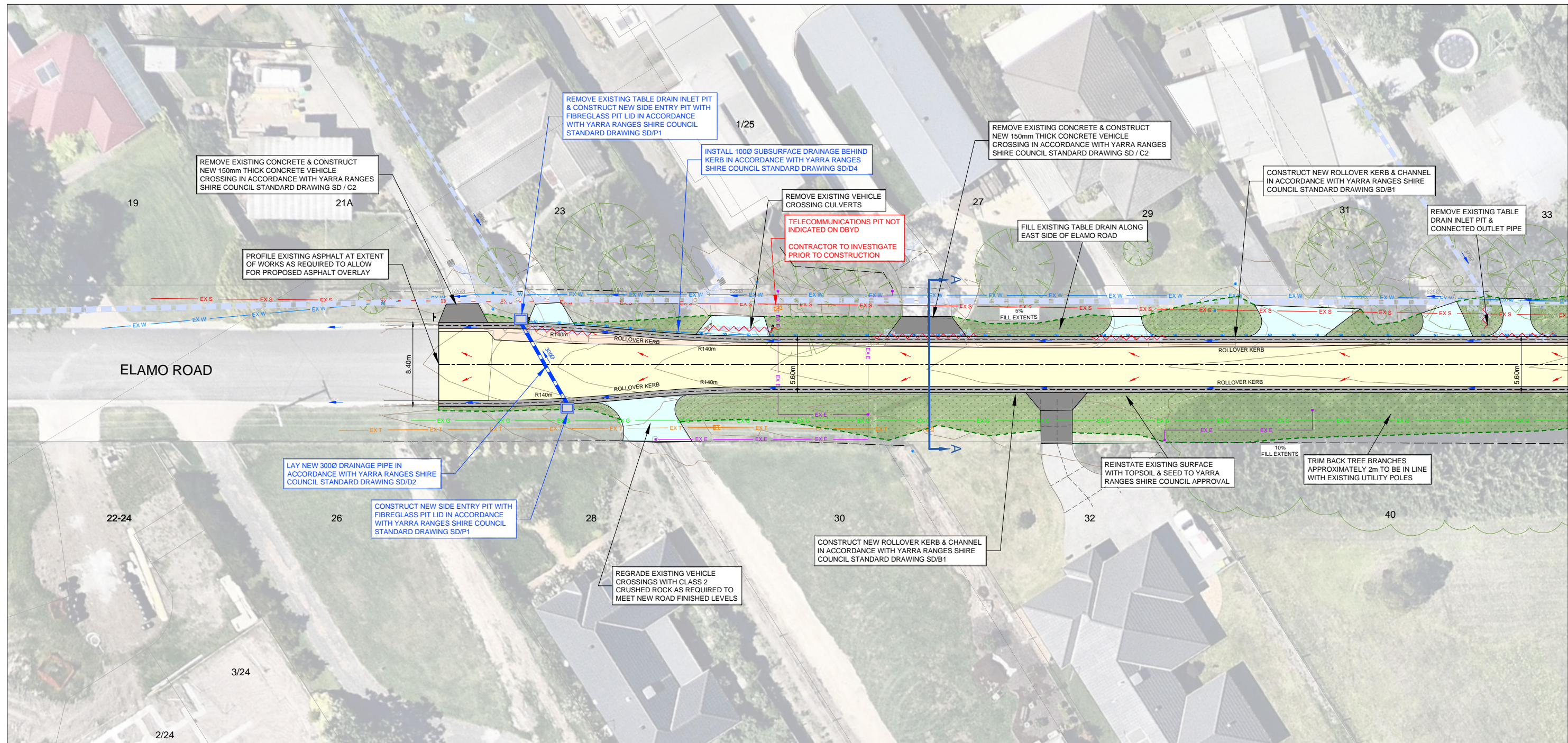
FILL BATTER EXTENT

CUT BATTER EXTENT

REMOVE EXISTING DRAINAGE PIPE



WARNING
BEWARE OF UNDERGROUND SERVICES.
THE LOCATION OF EXISTING UNDERGROUND SERVICES ARE APPROXIMATE ONLY AND THEIR EXACT POSITION SHOULD BE PROVEN ON SITE. NO GUARANTEE IS GIVEN THAT ALL EXISTING SERVICES ARE SHOWN.



GENERAL LAYOUT PLAN



		CONSULTANT ENGINEER		PROCVIL CONSULTING ENGINEERING		PROCVIL CONSULTING PTY LTD ABN 51 759 386 092 SUITE 9, 12 MAROONDAH HWY, RINGWOOD VIC 3134 PO BOX 164, RINGWOOD VIC 3134 P: (03) 8644 6834 E: info@procivil.com.au www.procivil.com.au		ORIENTATION		ORIGINAL SCALE & SHEET SIZE AS SHOWN @ A1		LOCAL GOVERNMENT AREA SHIRE OF YARRA RANGES		FUNCTIONAL DESIGN		PROJECT No. PC20010C	
				Specialist Civil Engineering Design Consultants		CIVIL ENGINEERING DESIGN LUKE WHITFIELD		TECHNICAL PEER REVIEW KURT CHAMBERLAIN		HEIGHT DATUM AHD		CLIENT Yarra Ranges Council		ROAD & DRAINAGE RECONSTRUCTION WORKS		SHEET No. 04 OF 07	
				Commitment Communication Collaboration		REGISTERED & CHARTERED PROFESSIONAL ENGINEER CHRIS PROCTOR		OR AS SHOWN		COORDINATE DATUM MGA 94 ZONE 55				ELAMO ROAD, HEALESVILLE (BETWEEN 21-49 ELAMO ROAD)		VERSION 02	
										SURVEY DATE 12-10-2021		CLIENT PROJECT MANAGER / CONTACT PETROS INDOS GRANT MCCARTHY		GENERAL LAYOUT PLAN		DWG No. PC20010C-04-02	
										AERIAL IMAGE DATE 23-12-2018							

LEGEND

- OVERLAY EXISTING PAVEMENT - 190mm THICK FLEXIBLE PAVEMENT IN ACCORDANCE WITH DETAIL ON SHEET 01

FULL DEPTH PAVEMENT - 290mm THICK FLEXIBLE PAVEMENT IN ACCORDANCE WITH DETAIL ON SHEET 01

LAWN AREA TO BE REINSTATED WITH YARRA RANGES SHIRE COUNCIL APPROVED TOPSOIL AND SEED

150mm MINIMUM THICKNESS CONCRETE VEHICLE CROSSING GENERALLY IN ACCORDANCE WITH YARRA RANGES SHIRE COUNCIL STANDARD DRAWING SD / C2

100mm MINIMUM THICKNESS CLASS 2 CRUSHED ROCK VEHICLE CROSSING GENERALLY IN ACCORDANCE WITH YARRA RANGES SHIRE COUNCIL STANDARD DRAWING SD / C2
- PROPOSED PAVEMENT GRADE

EXISTING DRAINAGE PIPE

2

NEW DRAINAGE PIT WITH PIT NUMBER AND PIPE

DIRECTION OF CHANNEL FLOW

SD

SUBSURFACE DRAINAGE IN ACCORDANCE WITH YARRA RANGES SHIRE COUNCIL STANDARD DRAWING SD / D4

SWALE INVERT

PAVEMENT LINE MARKING

NEW CONCRETE KERB AND CHANNEL IN ACCORDANCE WITH YARRA RANGES SHIRE COUNCIL STANDARD DRAWING SD / B1

NEW CONCRETE SLEEPER RETAINING WALL GENERALLY IN ACCORDANCE WITH YARRA RANGES SHIRE COUNCIL STANDARD DRAWING SD / F5
- EX W

EXISTING WATER

EX G

EXISTING GAS

EX S

EXISTING SEWER

EX T

EXISTING TELECOMMUNICATIONS

EX E

EXISTING UNDERGROUND ELECTRICITY

46

EXISTING CONTOUR MAJOR (1.0m)

46

EXISTING CONTOUR MINOR (0.2m)

46

FINISHED SURFACE CONTOUR MAJOR (1.0m)

46

FINISHED SURFACE CONTOUR MINOR (0.2m)

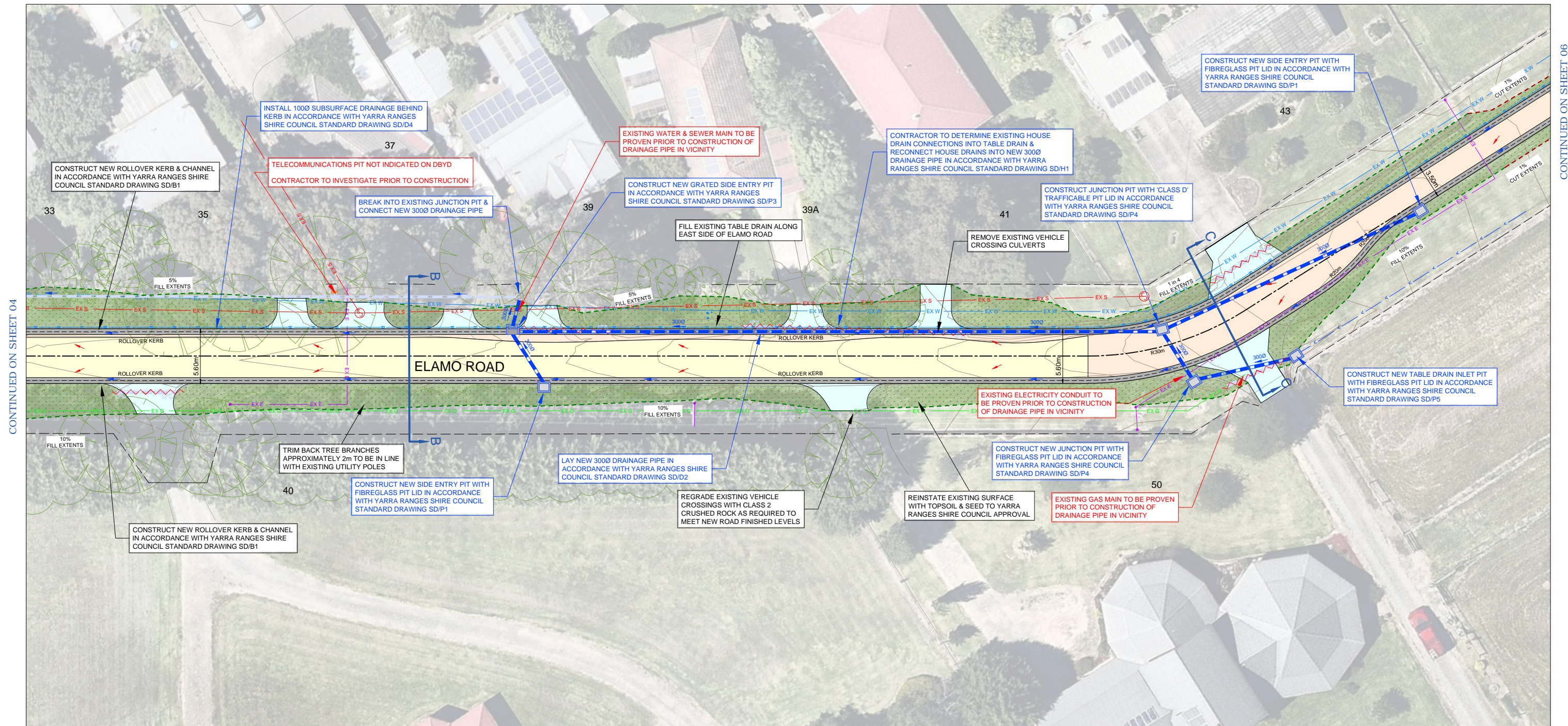
FILL BATTER EXTENT

CUT BATTER EXTENT

REMOVE EXISTING DRAINAGE PIPE



WARNING
BEWARE OF UNDERGROUND SERVICES.
THE LOCATION OF EXISTING UNDERGROUND SERVICES ARE APPROXIMATE ONLY AND THEIR EXACT POSITION SHOULD BE PROVEN ON SITE. NO GUARANTEE IS GIVEN THAT ALL EXISTING SERVICES ARE SHOWN.



GENERAL LAYOUT PLAN



--	--	--	--	--	--	--	--	--	--	--	--	--	--	--	--	--	--	--	--	--	--	--	--	--	--	--	--	--	--	--	--	--	--	--	--	--	--	--	--	--	--	--	--	--	--	--	--	--	--	--	--	--	--	--	--	--	--	--	--	--	--	--	--	--	--	--	--	--	--	--	--	--	--	--	--	--	--	--	--	--	--	--	--	--	--	--	--	--	--	--	--	--	--	--	--	--	--	--	--	--	--	--	--	--	--	--	--	--	--	--	--	--	--	--	--	--	--	--	--	--	--	--	--	--	--	--	--	--	--	--	--	--	--	--	--	--	--	--	--	--	--	--	--	--	--	--	--	--	--	--	--	--	--	--	--	--	--	--	--	--	--	--	--	--	--	--	--	--	--	--	--	--	--	--	--	--	--	--	--	--	--	--	--	--	--	--	--	--	--	--	--	--	--	--	--	--	--	--	--	--	--	--	--	--	--	--	--	--	--	--	--	--	--	--	--	--	--	--	--	--	--	--	--	--	--	--	--	--	--	--	--	--	--	--	--	--	--	--	--	--	--	--	--	--	--	--	--	--	--	--	--	--	--	--	--	--	--	--	--	--	--	--	--	--	--	--	--	--	--	--	--	--	--	--	--	--	--	--	--	--	--	--	--	--	--	--	--	--	--	--	--	--	--	--	--	--	--	--	--	--	--	--	--	--	--	--	--	--	--	--	--	--	--	--	--	--	--	--	--	--	--	--	--	--	--	--	--	--	--	--	--	--	--	--	--	--	--	--	--	--	--	--	--	--	--	--	--	--	--	--	--	--	--	--	--	--	--	--	--	--	--	--	--	--	--	--	--	--	--	--	--	--	--	--	--	--	--	--	--	--	--	--	--	--	--	--	--	--	--	--	--	--	--	--	--	--	--	--	--	--	--	--	--	--	--	--	--	--	--	--	--	--	--	--	--	--	--	--	--	--	--	--	--	--	--	--	--	--	--	--	--	--	--	--	--	--	--	--	--	--	--	--	--	--	--	--	--	--	--	--	--	--	--	--	--	--	--	--	--	--	--	--	--	--	--	--	--	--	--	--	--	--	--	--	--	--	--	--	--	--	--	--	--	--	--	--	--	--	--	--	--	--	--	--	--	--	--	--	--	--	--	--	--	--	--	--	--	--	--	--	--	--	--	--	--	--	--	--	--	--	--	--	--	--	--	--	--	--	--	--	--	--	--	--	--	--	--	--	--	--	--	--	--	--	--	--	--	--	--	--	--	--	--	--	--	--	--	--	--	--	--	--	--	--	--	--	--	--	--	--	--	--	--	--	--	--	--	--	--	--	--	--	--	--	--	--	--	--	--	--	--	--	--	--	--	--	--	--	--	--	--	--	--	--	--	--	--	--	--	--	--	--	--	--	--	--	--	--	--	--	--	--	--	--	--	--	--	--	--	--	--	--	--	--	--	--	--	--	--	--	--	--	--	--	--	--	--	--	--	--	--	--	--	--	--	--	--	--	--	--	--	--	--	--	--	--	--	--	--	--	--	--	--	--	--	--	--	--	--	--	--	--	--	--	--	--	--	--	--	--	--	--	--	--	--	--	--	--	--	--	--	--	--	--	--	--	--	--	--	--	--	--	--	--	--	--	--	--	--	--	--	--	--	--	--	--	--	--	--	--	--	--	--	--	--	--	--	--	--	--	--	--	--	--	--	--	--	--	--	--	--	--	--	--	--	--	--	--	--	--	--	--	--	--	--	--	--	--	--	--	--	--	--	--	--	--	--	--	--	--	--	--	--	--	--	--	--	--	--	--	--	--	--	--	--	--	--	--	--	--	--	--	--	--	--	--	--	--	--	--	--	--	--	--	--	--	--	--	--	--	--	--	--	--	--	--	--	--	--	--	--	--	--	--	--	--	--	--	--	--	--	--	--	--	--	--	--	--	--	--	--	--	--	--	--	--	--	--	--	--	--	--	--	--	--	--	--	--	--	--	--	--	--	--	--	--	--	--	--	--	--	--	--	--	--	--	--	--	--	--	--	--	--	--	--	--	--	--	--	--	--	--	--	--	--	--	--	--	--	--	--	--	--	--	--	--	--	--	--	--	--	--	--	--	--	--	--	--	--	--	--	--	--	--	--	--	--	--	--	--	--	--	--	--	--	--	--	--	--	--	--	--	--	--	--	--	--	--	--	--	--	--	--	--	--	--	--	--	--	--	--	--	--	--	--	--	--	--	--	--	--	--	--	--	--	--	--	--	--	--	--	--	--	--	--	--	--	--	--	--	--	--	--	--	--	--	--	--	--	--	--	--	--	--	--	--	--	--	--	--	--	--	--	--	--	--	--	--	--	--	--	--	--	--	--	--	--	--	--	--	--	--	--	--	--	--	--	--	--	--	--	--	--	--	--	--	--	--	--	--	--	--	--	--	--	--	--	--	--	--	--	--	--	--	--	--	--	--	--	--	--	--	--	--	--	--	--	--	--	--	--	--	--	--	--	--	--	--	--	--	--	--	--	--	--	--	--	--	--	--	--	--	--	--	--	--	--	--	--	--	--	--	--	--	--	--	--	--	--	--	--	--	--	--	--	--	--	--	--	--	--	--	--	--	--	--	--	--	--	--	--	--	--	--	--	--	--	--	--	--	--	--	--	--	--	--	--	--	--	--	--	--	--	--	--	--	--	--	--	--	--	--	--	--	--	--	--	--	--	--	--	--	--	--	--	--	--	--	--	--	--	--	--	--	--	--	--	--	--	--	--	--	--	--	--	--	--	--	--	--	--	--	--	--	--	--	--	--	--	--	--	--	--	--	--	--	--	--	--	--	--	--	--	--	--	--	--	--	--	--	--	--	--	--	--	--	--	--	--	--	--	--	--	--	--	--	--	--	--	--	--	--	--	--	--	--	--	--	--	--	--	--	--	--	--	--	--	--	--	--	--	--	--	--	--	--	--	--	--	--	--	--	--	--	--	--	--	--	--	--	--	--	--	--	--	--	--	--	--	--	--	--	--	--	--	--	--	--	--	--	--	--	--	--	--	--	--	--	--	--	--	--	--	--	--	--	--	--	--	--	--	--	--	--	--	--	--	--	--	--	--	--	--	--	--	--	--	--	--	--	--	--	--

LEGEND

- OVERLAY EXISTING PAVEMENT - 190mm THICK FLEXIBLE PAVEMENT IN ACCORDANCE WITH DETAIL ON SHEET 01

FULL DEPTH PAVEMENT - 290mm THICK FLEXIBLE PAVEMENT IN ACCORDANCE WITH DETAIL ON SHEET 01

LAWN AREA TO BE REINSTATED WITH YARRA RANGES SHIRE COUNCIL APPROVED TOPSOIL AND SEED

150mm MINIMUM THICKNESS CONCRETE VEHICLE CROSSING GENERALLY IN ACCORDANCE WITH YARRA RANGES SHIRE COUNCIL STANDARD DRAWING SD / C2

100mm MINIMUM THICKNESS CLASS 2 CRUSHED ROCK VEHICLE CROSSING GENERALLY IN ACCORDANCE WITH YARRA RANGES SHIRE COUNCIL STANDARD DRAWING SD / C2
- PROPOSED PAVEMENT GRADE

EXISTING DRAINAGE PIPE

2

NEW DRAINAGE PIT WITH PIT NUMBER AND PIPE

DIRECTION OF CHANNEL FLOW

SD

SUBSURFACE DRAINAGE IN ACCORDANCE WITH YARRA RANGES SHIRE COUNCIL STANDARD DRAWING SD / D4

SWALE INVERT

PAVEMENT LINE MARKING

NEW CONCRETE KERB AND CHANNEL IN ACCORDANCE WITH YARRA RANGES SHIRE COUNCIL STANDARD DRAWING SD / B1

NEW CONCRETE SLEEPER RETAINING WALL GENERALLY IN ACCORDANCE WITH YARRA RANGES SHIRE COUNCIL STANDARD DRAWING SD / F5
- EX W

EXISTING WATER

EX G

EXISTING GAS

EX S

EXISTING SEWER

EX T

EXISTING TELECOMMUNICATIONS

EX E

EXISTING UNDERGROUND ELECTRICITY

46

EXISTING CONTOUR MAJOR (1.0m)

46

EXISTING CONTOUR MINOR (0.2m)

46

FINISHED SURFACE CONTOUR MAJOR (1.0m)

46

FINISHED SURFACE CONTOUR MINOR (0.2m)

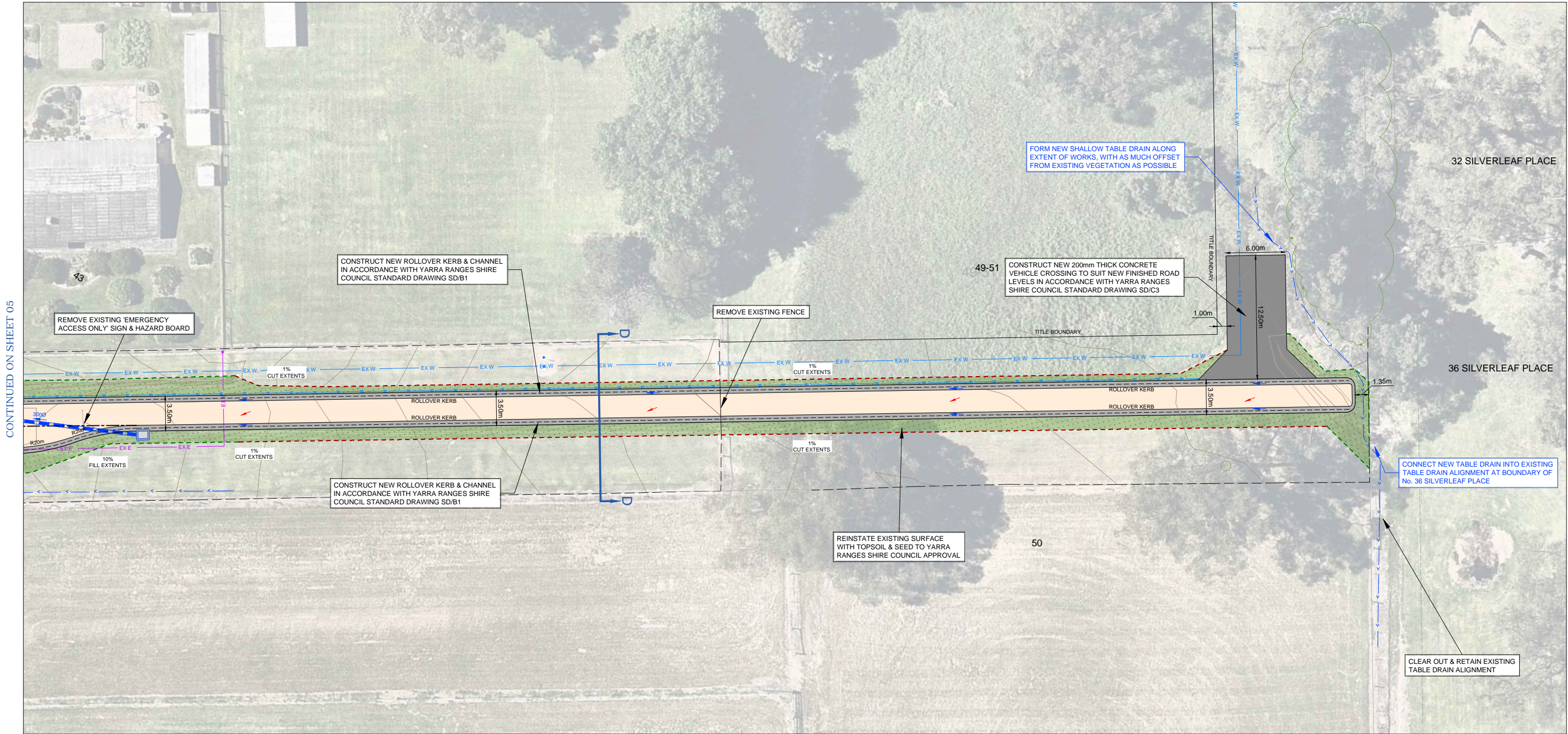
FILL BATTER EXTENT

CUT BATTER EXTENT

REMOVE EXISTING DRAINAGE PIPE



WARNING
BEWARE OF UNDERGROUND SERVICES.
THE LOCATION OF EXISTING UNDERGROUND SERVICES ARE APPROXIMATE ONLY AND THEIR EXACT POSITION SHOULD BE PROVEN ON SITE. NO GUARANTEE IS GIVEN THAT ALL EXISTING SERVICES ARE SHOWN.



GENERAL LAYOUT PLAN



REV	DESCRIPTION	DATE
02	FUNCTIONAL DESIGN - ISSUED FOR REVIEW	25-11-2021
01	DRAFT FUNCTIONAL DESIGN - ISSUED FOR REVIEW	25-10-2021
00	FUNCTIONAL DESIGN - ISSUED FOR REVIEW	30-04-2021

CONSULTANT ENGINEER

PROCIVIL
CONSULTING ENGINEERING

Specialist Civil Engineering Design Consultants

Commitment | Communication | Collaboration

PROCIVIL CONSULTING PTY LTD
ABN 51 759 386 082
SUITE 9, 12 MAROONDAH HWY, RINGWOOD VIC 3134
PO BOX 164, RINGWOOD VIC 3134
P: (03) 8644 6834
E: info@procivil.com.au
www.procivil.com.au

CIVIL ENGINEERING DESIGN LUKE WHITFIELD	TECHNICAL PEER REVIEW KURT CHAMBERLAIN
REGISTERED & CHARTERED PROFESSIONAL ENGINEER CHRIS PROCTOR	

ORIENTATION

OR AS SHOWN

ORIGINAL SCALE & SHEET SIZE
AS SHOWN @ A1

HEIGHT DATUM
AHD

COORDINATE DATUM
MGA 94 ZONE 55

SURVEY DATE
12-10-2021

AERIAL IMAGE DATE
23-12-2018

LOCAL GOVERNMENT AREA
SHIRE OF YARRA RANGES

CLIENT

CLIENT PROJECT MANAGER / CONTACT
PETROS INDOS | GRANT MCCARTHY

FUNCTIONAL DESIGN

ROAD & DRAINAGE RECONSTRUCTION WORKS

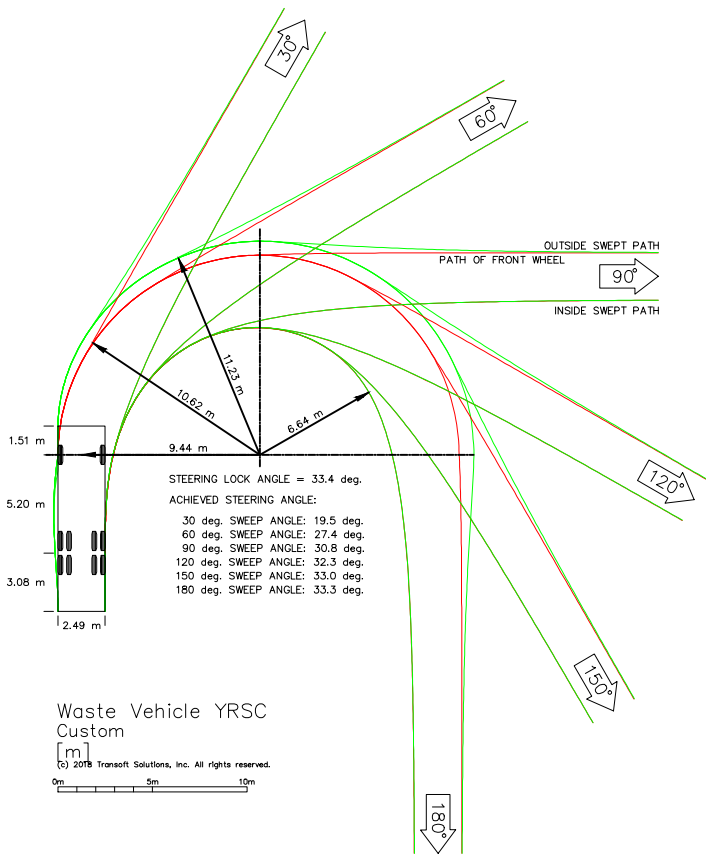
ELAMO ROAD, HEALESVILLE
(BETWEEN 21-49 ELAMO ROAD)

GENERAL LAYOUT PLAN

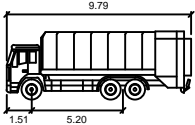
PROJECT No.	PC20010C
SHEET No.	06 OF 07
VERSION	02
DWG No.	PC20010C-06-02



WARNING
BEWARE OF UNDERGROUND SERVICES
THE LOCATION OF EXISTING UNDERGROUND SERVICES ARE APPROXIMATE
ONLY AND THEIR EXACT POSITION SHOULD BE PROVEN ON SITE. NO
GUARANTEE IS GIVEN THAT ALL EXISTING SERVICES ARE SHOWN.



Waste Vehicle YRSC
Custom
[m]
© 2018 Transoft Solutions, Inc. All rights reserved.



Waste Vehicle YRSC
meters
Width : 2.49
Track : 2.50
Lock to Lock Time : 6.0
Steering Angle : 33.4



SWEPT PATH ANALYSIS PLAN - YRSC WASTE VEHICLE



REV	DESCRIPTION	DATE
02	FUNCTIONAL DESIGN - ISSUED FOR REVIEW	25-11-2021
01	DRAFT FUNCTIONAL DESIGN - ISSUED FOR REVIEW	25-10-2021
00	FUNCTIONAL DESIGN - ISSUED FOR REVIEW	30-04-2021

CONSULTANT ENGINEER

PROCIVIL
CONSULTING ENGINEERING

Specialist Civil Engineering Design Consultants

Commitment | Communication | Collaboration

PROCIVIL CONSULTING PTY LTD
ABN 51 759 386 082
SUITE 9, 12 MAROONDAH HWY, RINGWOOD VIC 31134
PO BOX 164, RINGWOOD VIC 31134
P: (03) 8644 6834
E: info@procivil.com.au
www.procivil.com.au

CIVIL ENGINEERING DESIGN
LUKE WHITFIELD

TECHNICAL PEER REVIEW
KURT CHAMBERLAIN

REGISTERED & CHARTERED PROFESSIONAL ENGINEER
CHRIS PROCTOR

ORIENTATION

OR AS SHOWN

ORIGINAL SCALE & SHEET SIZE
AS SHOWN @ A1

HEIGHT DATUM
AHD

COORDINATE DATUM
MGA 94 ZONE 55

SURVEY DATE
12-10-2021

AERIAL IMAGE DATE
23-12-2018

LOCAL GOVERNMENT AREA
SHIRE OF YARRA RANGES

CLIENT

CLIENT PROJECT MANAGER / CONTACT
PETROS INDOS | GRANT MCCARTHY

FUNCTIONAL DESIGN

ROAD & DRAINAGE RECONSTRUCTION WORKS

ELAMO ROAD, HEALESVILLE
(BETWEEN 21-49 ELAMO ROAD)

SWEPT PATH ANALYSIS PLAN - YRSC WASTE VEHICLE

PROJECT No.
PC20010C

SHEET No.
07 OF 07

VERSION
02

DWG No.
PC20010C-07-02