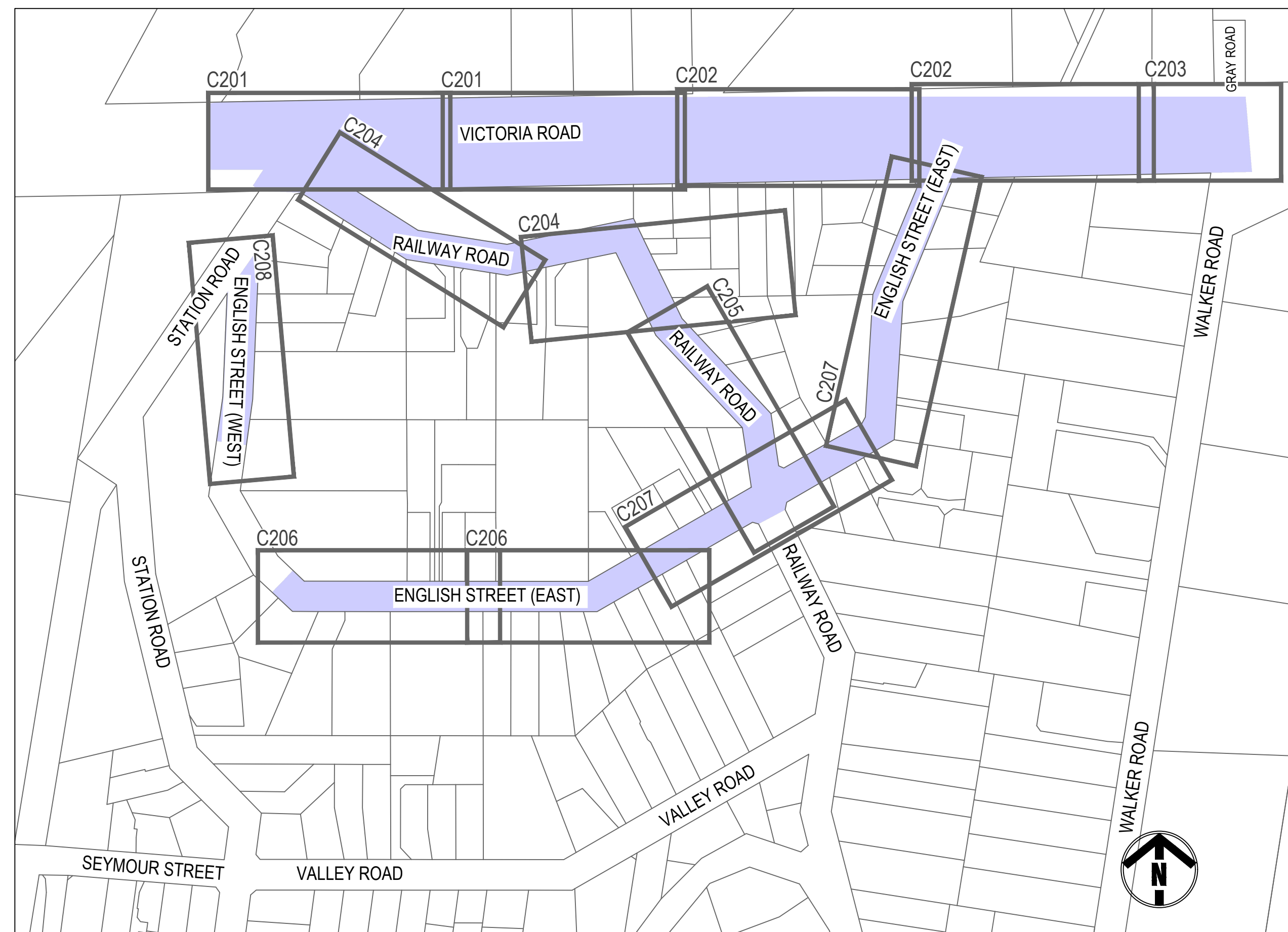
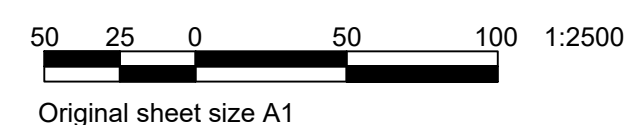


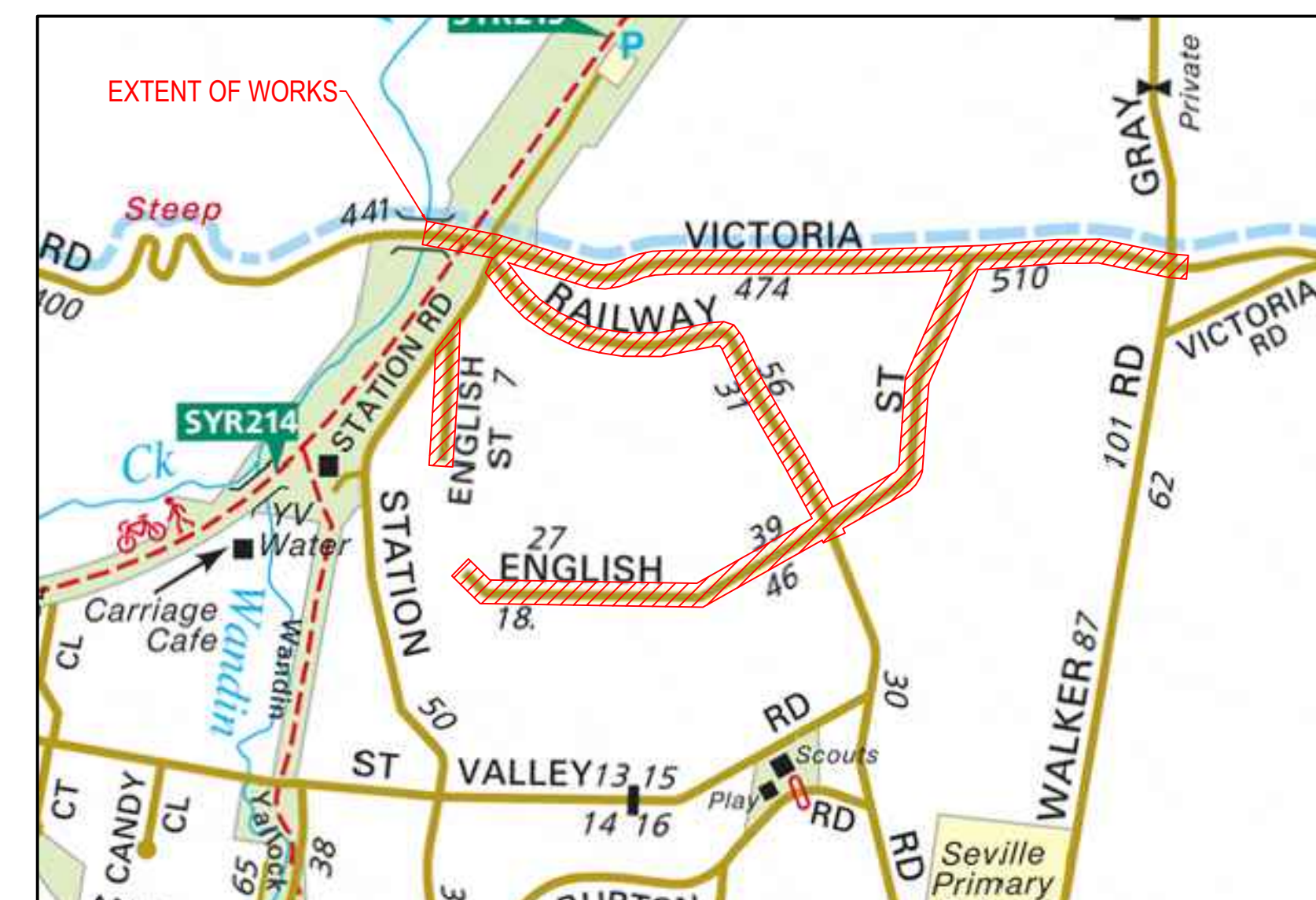
# VICTORIA ROAD, RAILWAY ROAD, AND ENGLISH STREET, SEVILLE ROAD CONSTRUCTION WORKS



## OVERALL PLAN



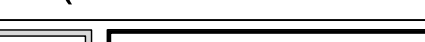
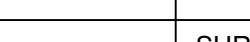
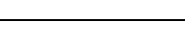
DRAWING INDEX	
SHEET NO.	TITLE
C101	OVERALL PLAN, DRAWING INDEX, AND NOTES
C201	DETAIL PLAN - No. 440 VICTORIA ROAD - No. 472 VICTORIA ROAD
C202	DETAIL PLAN - No. 474 VICTORIA ROAD - No. 507 VICTORIA ROAD
C203	DETAIL PLAN - VICTORIA ROAD / WALKER ROAD / GRAY ROAD INTERSECTION
C204	DETAIL PLAN - No. 78 STATION ROAD - No. 54 RAILWAY ROAD
C205	DETAIL PLAN - No. 54 RAILWAY ROAD - No. 46 RAILWAY ROAD
C206	DETAIL PLAN - No. 14 ENGLISH STREET - No. 46 ENGLISH STREET
C207	DETAIL PLAN - No. 39 ENGLISH STREET - No. 76 ENGLISH STREET
C208	DETAIL PLAN - No. 76 STATION ROAD - No. 11 ENGLISH STREET



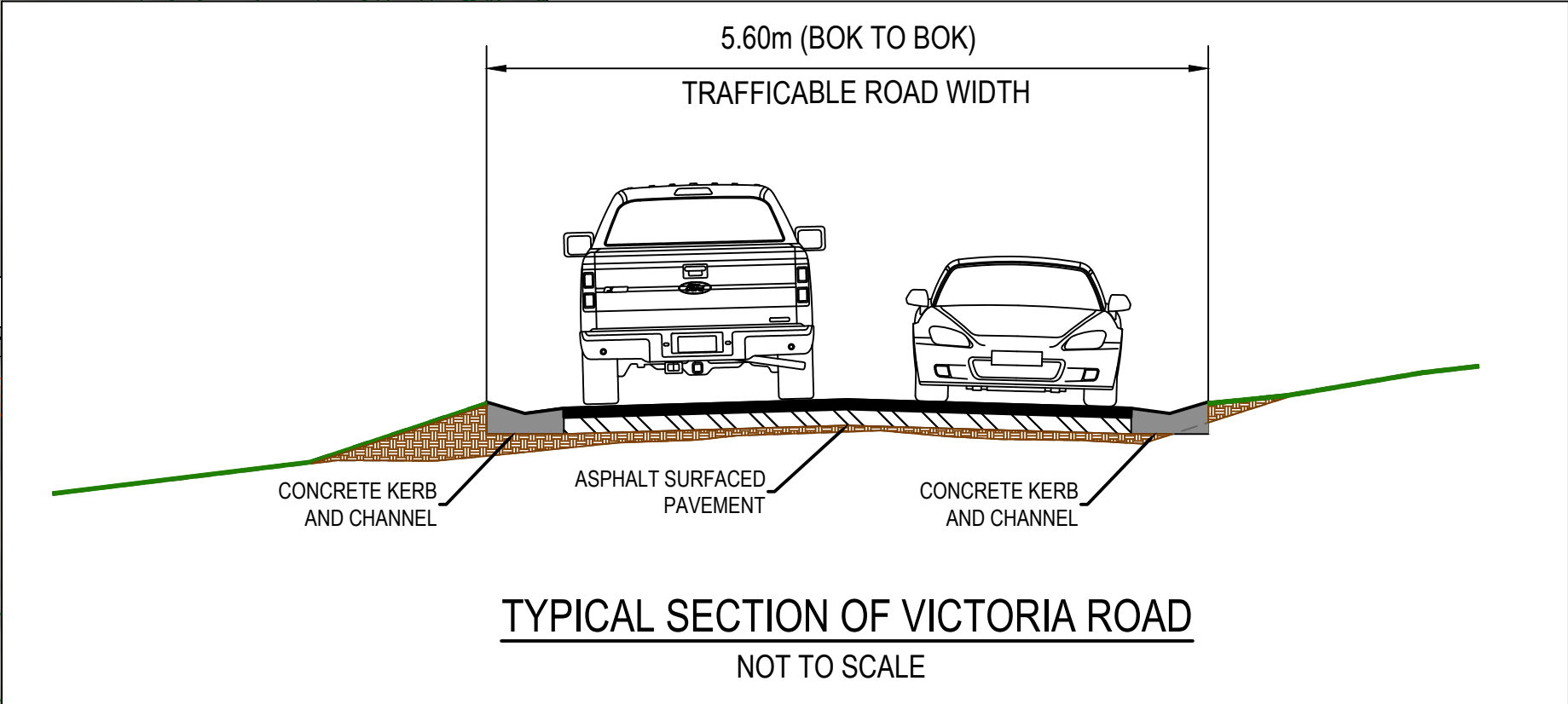
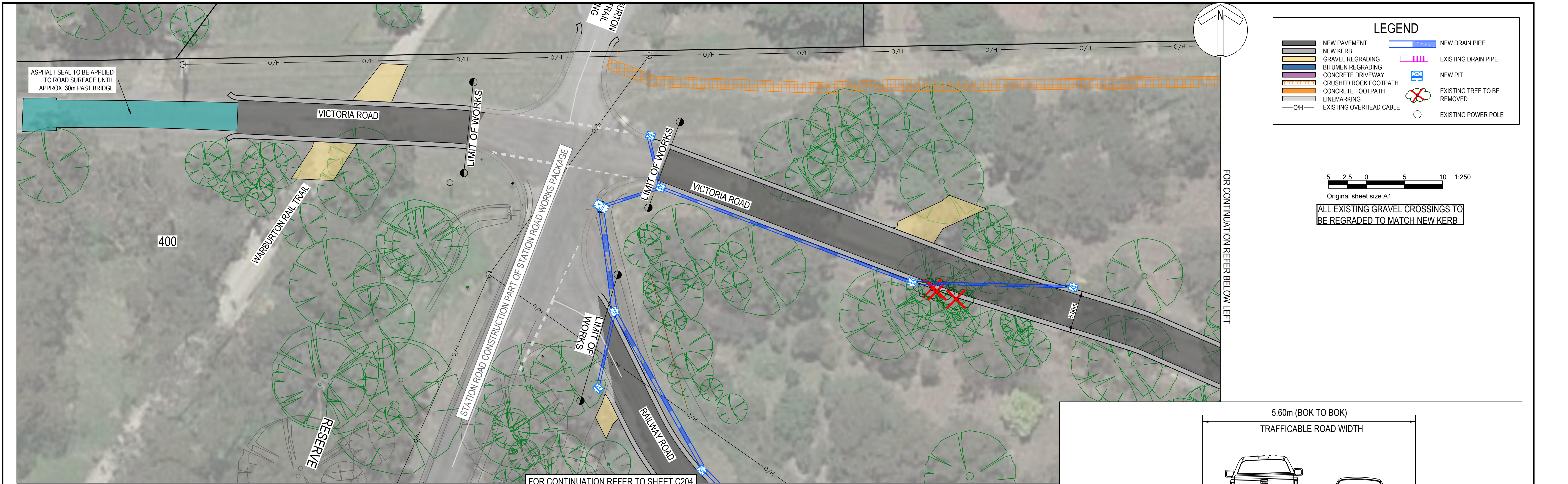
## PROJECT SUMMARY

WORKS TO INCLUDE:

- PAVEMENT AND KERB CONSTRUCTION ON VICTORIA ROAD, RAILWAY ROAD AND ENGLISH STREET.
- NARROW SECTIONS ALONG RAILWAY ROAD AND ENGLISH STREET TO PROTECT NATIVE VEGETATION AND TO IMPROVE DRIVEWAY ACCESS
- DRAINAGE OUTLETS CONSTRUCTED ON NORTH SIDE OF VICTORIA ROAD ARE PROPOSED TO DISPERSE STORMWATER WITHIN THE ROADSIDE AREA BY CONSTRUCTING EARTH MOUNDS

DATE		REVISION	AUTHORISED	VER.	PLAN STATUS:	SCALES:			YARRA RANGES COUNCIL						
01.02.2022		COMMUNITY CONSULTATION	AC	00	<div><div><div>WARNING</div><div>BEWARE - UNDERGROUND SERVICES</div><div>THE LOCATIONS OF EXISTING UNDERGROUND SERVICES ARE APPROXIMATE ONLY AND THEIR EXACT DEPTH AND LOCATION SHOULD BE VERIFIED AND PROVEN ON SITE BY THE APPROPRIATE SERVICE PROVIDERS PRIOR TO ANY SITE EXCAVATION. NO GUARANTEE IS GIVEN THAT ALL EXISTING SERVICES ARE SHOWN. CONTRACTOR TO TAKE PRECAUTIONS TO AVOID CONFLICTS</div></div><div><div>www.dialbeforeyoudig.com.au</div><div></div></div><div><div>JCA LAND CONSULTANTS</div><div>The Subdivision Specialists</div><div>Suite 5, 523 Macedonah Highway, Ringwood VIC 3154 Ph 03 9130 4488 E info@jca.com.au www.jca.com.au</div></div><div><div></div></div></div>	AS SHOWN AT A1			<div><div>LEVEL DATUM A.H.D.</div><div></div></div> <div>COORDINATE DATUM MGA</div>		<div>ROAD CONSTRUCTION VICTORIA ROAD, RAILWAY ROAD, AND ENGLISH STREET SEVILLE OVERALL PLAN, DRAWING INDEX, AND NOTES</div>		CHECKED BY XX	SHEET NO. C101	VERSION 01
03.02.2022		COUNCIL AMENDMENTS	AC	01		SURVEY BY: JCA	COORDINATE DATUM MGA	APPROVED XX					DRAWING NO. 26665_C1_CC.dwg		
						PLAN BY: Z.GLUYAS (JCA)		MANAGER - INFRASTRUCTURE SERVICES					JCA Ref: 26665		
						CHECKED BY: A.CHARNOCK (JCA)									
						PROJECT ENGINEER: G.McCARTHY									
					DATE: 01.02.2022										
					CAD FILE: 26665_C1_CC.dwg										





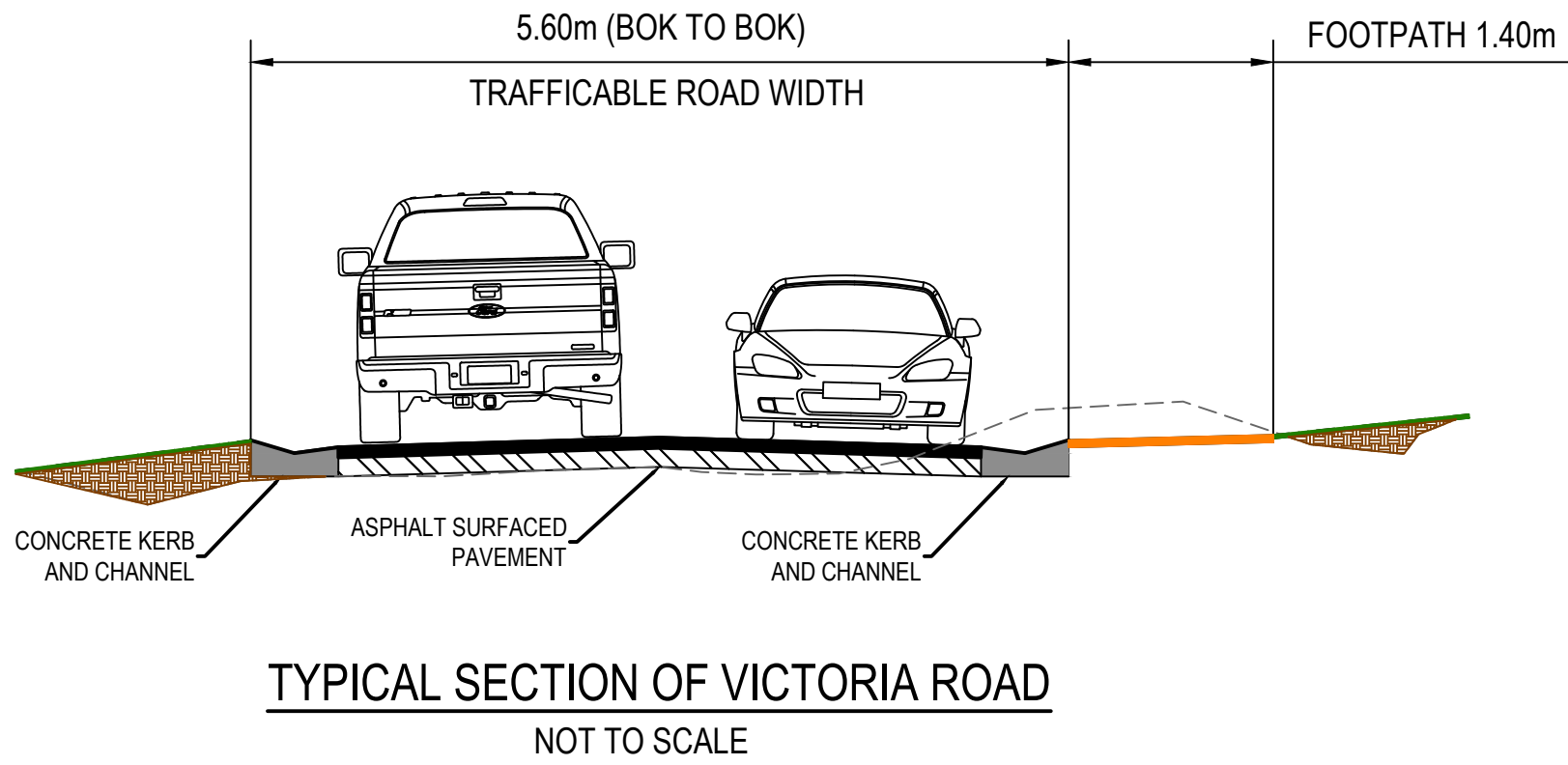
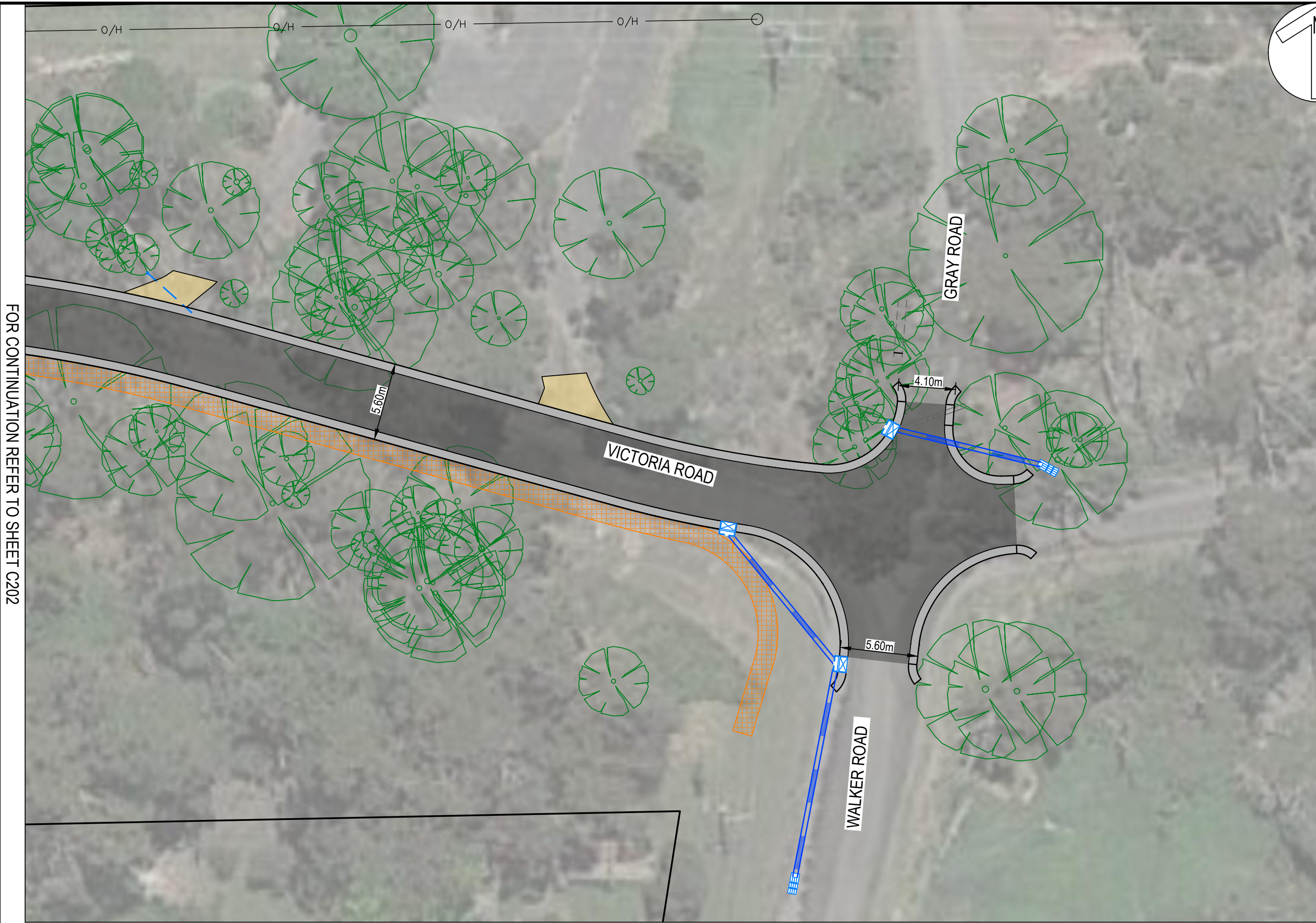
DATE	REVISION	AUTHORISED	VER.	PLAN STATUS:					SCALES:							
01.02.2022	COMMUNITY CONSULTATION	AC	00	CONSULTATION ISSUE (NOT FOR CONSTRUCTION)					AS SHOWN AT A1							
03.02.2022	COUNCIL AMENDMENTS	AC	01													
				<div><div><div>WARNING</div><div>BEWARE - UNDERGROUND SERVICES</div><div>THE LOCATIONS OF EXISTING UNDERGROUND SERVICES ARE APPROXIMATE ONLY AND THEIR EXACT DEPTH AND LOCATION SHOULD BE VERIFIED AND PROVEN ON SITE BY THE APPROPRIATE SERVICE PROVIDERS PRIOR TO ANY SITE EXCAVATION. NO GUARANTEE IS GIVEN THAT ALL EXISTING SERVICES ARE SHOWN. CONTRACTOR TO TAKE PRECAUTIONS TO AVOID CONFLICTS</div></div><div><div>www.dialbeforeyoudig.com.au</div><div></div><div>BEFORE YOU DIG</div></div><div><div></div><div>JCA LAND CONSULTANTS</div><div>The Subdivision Specialists</div><div>Suite 9, 303 Marcondah Highway, Ringwood VIC 3134 Ph 03 8755 4888   <a href="mailto:info@jca.com.au">info@jca.com.au</a>   <a href="http://www.jca.com.au">www.jca.com.au</a></div></div><div><div></div><div>Quality Management System ISO 9001 trustmark.com.au</div></div></div>					SURVEY BY:	JCA	LEVEL DATUM A.H.D.		YARRA RANGES COUNCIL			
									PLAN BY:	Z.GLUYAS (JCA)						
									CHECKED BY:	A.CHARNOCK (JCA)						
									PROJECT ENGINEER:	G.McCARTHY						
									DATE:	01.02.2022						
								CAD FILE:	26665_C2_CC.dwg	COORDINATE DATUM MGA						
												ROAD CONSTRUCTION VICTORIA ROAD, RAILWAY ROAD, AND ENGLISH STREET SEVILLE DETAIL PLANS - No. 440 VICTORIA ROAD - No. 472 VICTORIA ROAD		CHECKED BY XX	SHEET NO. C201	VERSION 01
												APPROVED XX	DRAWING NO. 26665_C2_CC.dwg			
												MANAGER - INFRASTRUCTURE SERVICES	JCA Ref: 26665			



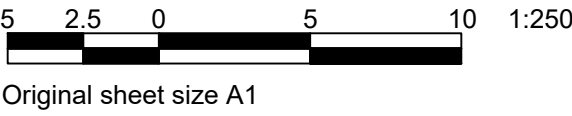




FOR CONTINUATION REFER TO SHEET C202



LEGEND			
	NEW PAVEMENT		NEW DRAIN PIPE
	NEW KERB		EXISTING DRAIN PIPE
	GRAVEL REGRADING		NEW PIT
	BITUMEN REGRADING		EXISTING TREE TO BE REMOVED
	CONCRETE DRIVEWAY		EXISTING POWER POLE
	CRUSHED ROCK FOOTPATH		
	CONCRETE FOOTPATH		
	LINEMARKING		
	EXISTING OVERHEAD CABLE		



ALL EXISTING GRAVEL CROSSINGS TO  
BE REGRADED TO MATCH NEW KERB

DATE	REVISION	AUTHORISED	VER.
01.02.2022	COMMUNITY CONSULTATION	AC	00
03.02.2022	COUNCIL AMENDMENTS	AC	01

PLAN STATUS: CONSULTATION ISSUE (NOT FOR CONSTRUCTION)

**WARNING**  
BEWARE - UNDERGROUND SERVICES  
THE LOCATIONS OF EXISTING UNDERGROUND SERVICES ARE APPROXIMATE ONLY AND THEIR EXACT DEPTH AND LOCATION SHOULD BE VERIFIED AND PROVEN ON SITE BY THE APPROPRIATE SERVICE PROVIDERS PRIOR TO ANY SITE EXCAVATION. NO GUARANTEE IS GIVEN THAT ALL EXISTING SERVICES ARE SHOWN. CONTRACTOR TO TAKE PRECAUTIONS TO AVOID CONFLICTS

www.dialbeforeyoudig.com.au

The Subdivision Specialists  
Suite 9, 303 Marcondah Highway, Ringwood VIC 3134  
Ph 03 8755 4888 | [info@jca.com.au](mailto:info@jca.com.au) | [www.jca.com.au](http://www.jca.com.au)

Quality Management System  
ISO 9001  
trustmark.com.au

SCALES:  
AS SHOWN AT A1

SURVEY BY: JCA  
PLAN BY: Z.GLUYAS (JCA)  
CHECKED BY: A.CHARNOCK (JCA)  
PROJECT ENGINEER: G.McCARTHY  
DATE: 01.02.2022  
CAD FILE: 26665\_C2\_CC.dwg

LEVEL DATUM  
A.H.D.  
COORDINATE DATUM  
MGA

**YARRA RANGES COUNCIL**  
**ROAD CONSTRUCTION**  
VICTORIA ROAD, RAILWAY ROAD, AND ENGLISH STREET  
SEVILLE  
DETAIL PLANS - VICTORIA ROAD / WALKER ROAD  
/ GRAY ROAD INTERSECTION

CHECKED BY  
XX  
APPROVED  
XX  
MANAGER -  
INFRASTRUCTURE SERVICES

SHEET NO.  
C203  
DRAWING NO.  
26665\_C2\_CC.dwg  
JCA Ref: 26665

VERSION  
01



FOR CONTINUATION REFER TO SHEET C201

FOR CONTINUATION REFER ABOVE RIGHT

DATE	REVISION	AUTHORISED	VER.
01.02.2022	COMMUNITY CONSULTATION	AC	00
03.02.2022	COUNCIL AMENDMENTS	AC	01

PLAN STATUS: CONSULTATION ISSUE (NOT FOR CONSTRUCTION)

WARNING

BEWARE - UNDERGROUND SERVICES

THE LOCATIONS OF EXISTING UNDERGROUND SERVICES ARE APPROXIMATE ONLY AND THEIR EXACT DEPTH AND LOCATION SHOULD BE VERIFIED AND PROVEN ON SITE BY THE APPROPRIATE SERVICE PROVIDERS PRIOR TO ANY SITE EXCAVATION. NO GUARANTEE IS GIVEN THAT ALL EXISTING SERVICES ARE SHOWN. CONTRACTOR TO TAKE PRECAUTIONS TO AVOID CONFLICTS

www.dialbeforeyoudig.com.au

JCA LAND CONSULTANTS

The Subdivision Specialists

Suite 9, 303 Marcondah Highway, Ringwood VIC 3134  
Ph 03 9755 4888 | [info@jca.com.au](mailto:info@jca.com.au) | [www.jca.com.au](http://www.jca.com.au)

Quality Management System  
ISO 9001  
trustmark.com.au

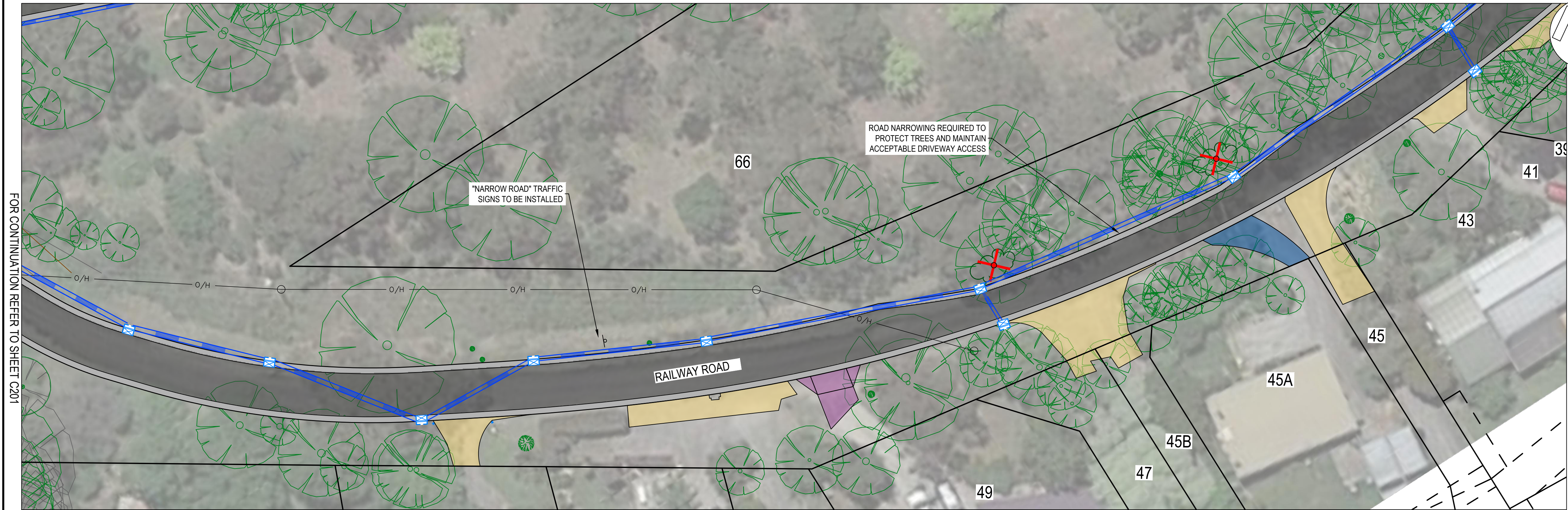
SCALES: AS SHOWN AT A1
SURVEY BY: JCA
PLAN BY: Z.GLUYAS (JCA)
CHECKED BY: A.CHARNOCK (JCA)
PROJECT ENGINEER: G.McCARTHY
DATE: 01.02.2022
CAD FILE: 26665_C2_CC.dwg

LEVEL DATUM A.H.D.
COORDINATE DATUM MGA

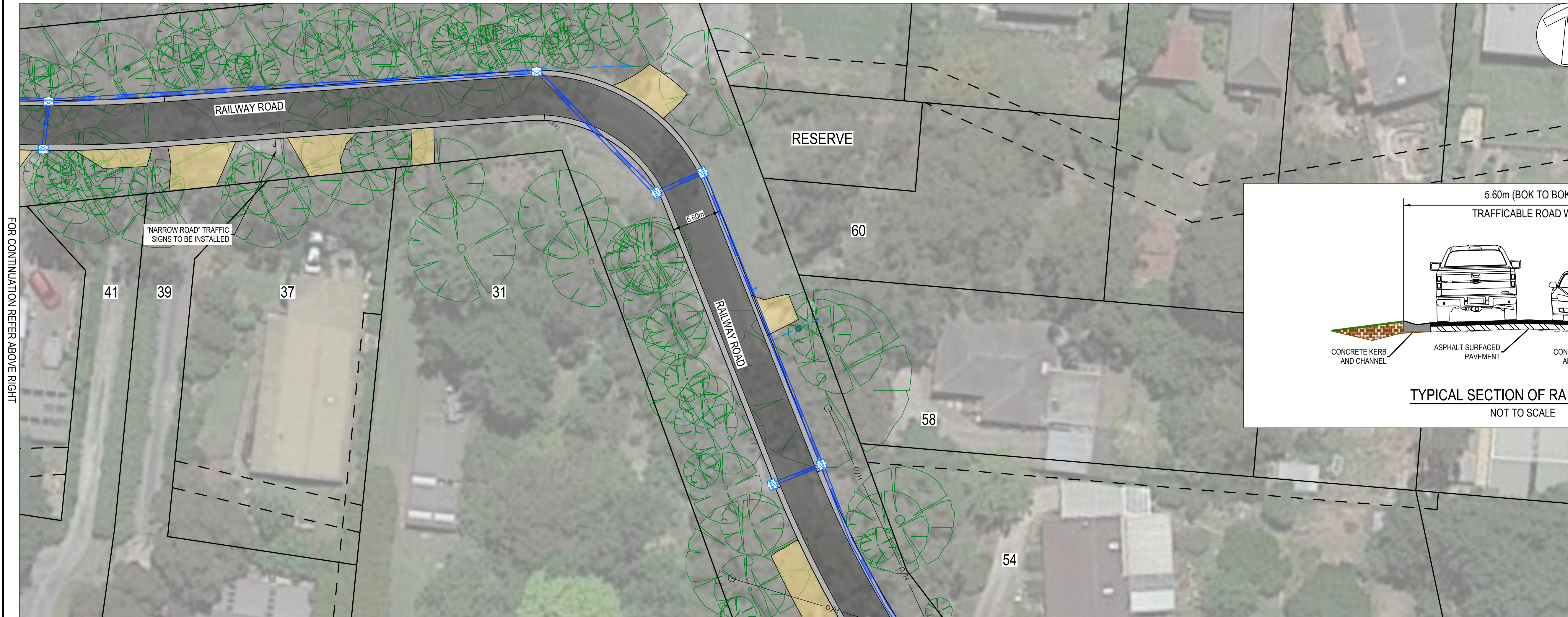
YARRA RANGES COUNCIL

ROAD CONSTRUCTION  
VICTORIA ROAD, RAILWAY ROAD, AND ENGLISH STREET  
SEVILLE  
DETAIL PLANS - No. 78 STATION ROAD -  
No. 54 RAILWAY ROAD

CHECKED BY XX	SHEET NO. C204	VERSION 01
APPROVED XX MANAGER - INFRASTRUCTURE SERVICES	DRAWING NO. 26665_C2_CC.dwg JCA Ref: 26665	



FOR CONTINUATION REFER BELOW LEFT



FOR CONTINUATION REFER TO SHEET C205

LEGEND

NEW PAVEMENT

NEW KERB

GRAVEL REGRADING

BITUMEN REGRADING

CONCRETE DRIVEWAY

CRUSHED ROCK FOOTPATH

CONCRETE FOOTPATH

LINEMARKING

O/H

EXISTING OVERHEAD CABLE

NEW DRAIN PIPE

EXISTING DRAIN PIPE

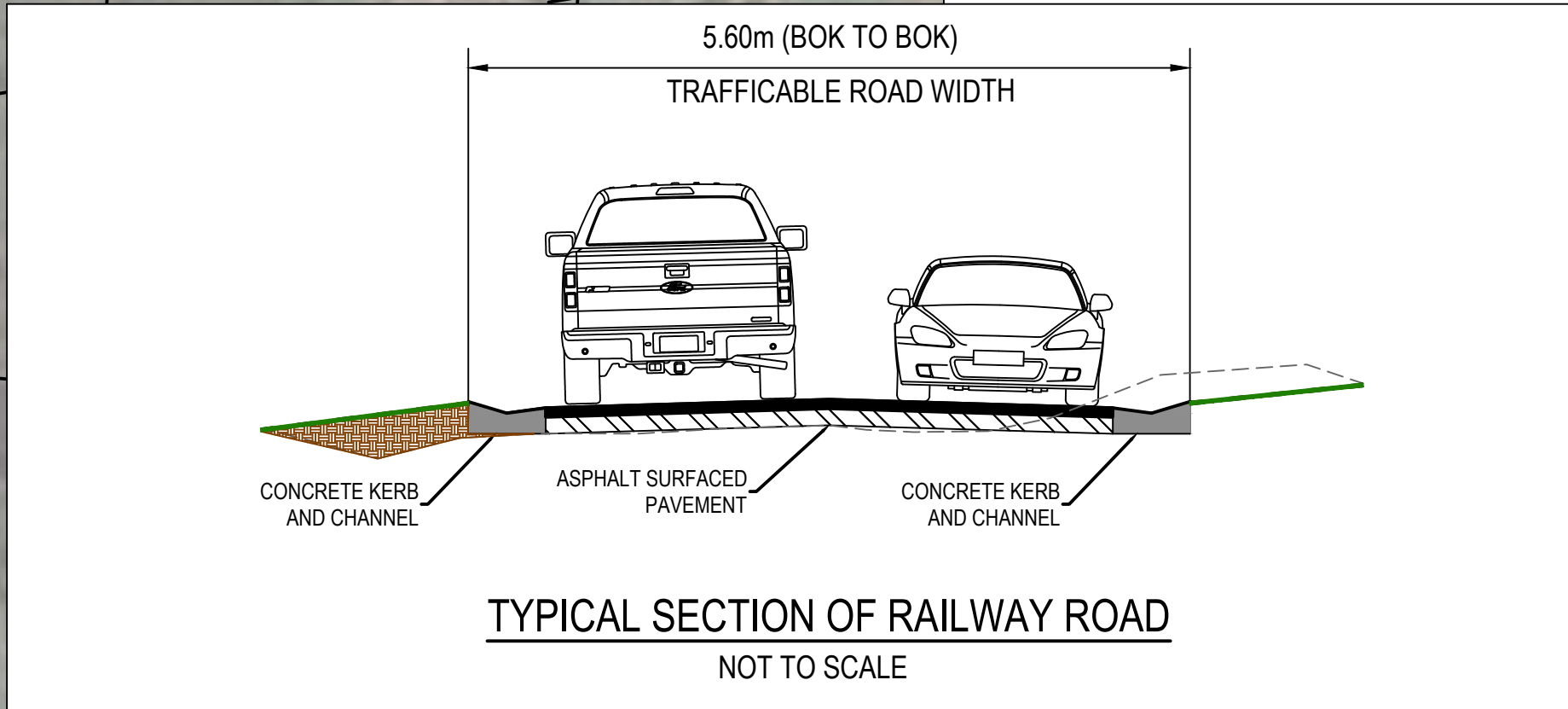
NEW PIT

EXISTING TREE TO BE REMOVED

EXISTING POWER POLE

5 2.5 0 5 10 1:250

Original sheet size A1













FOR CONTINUATION REFER TO SHEET C206

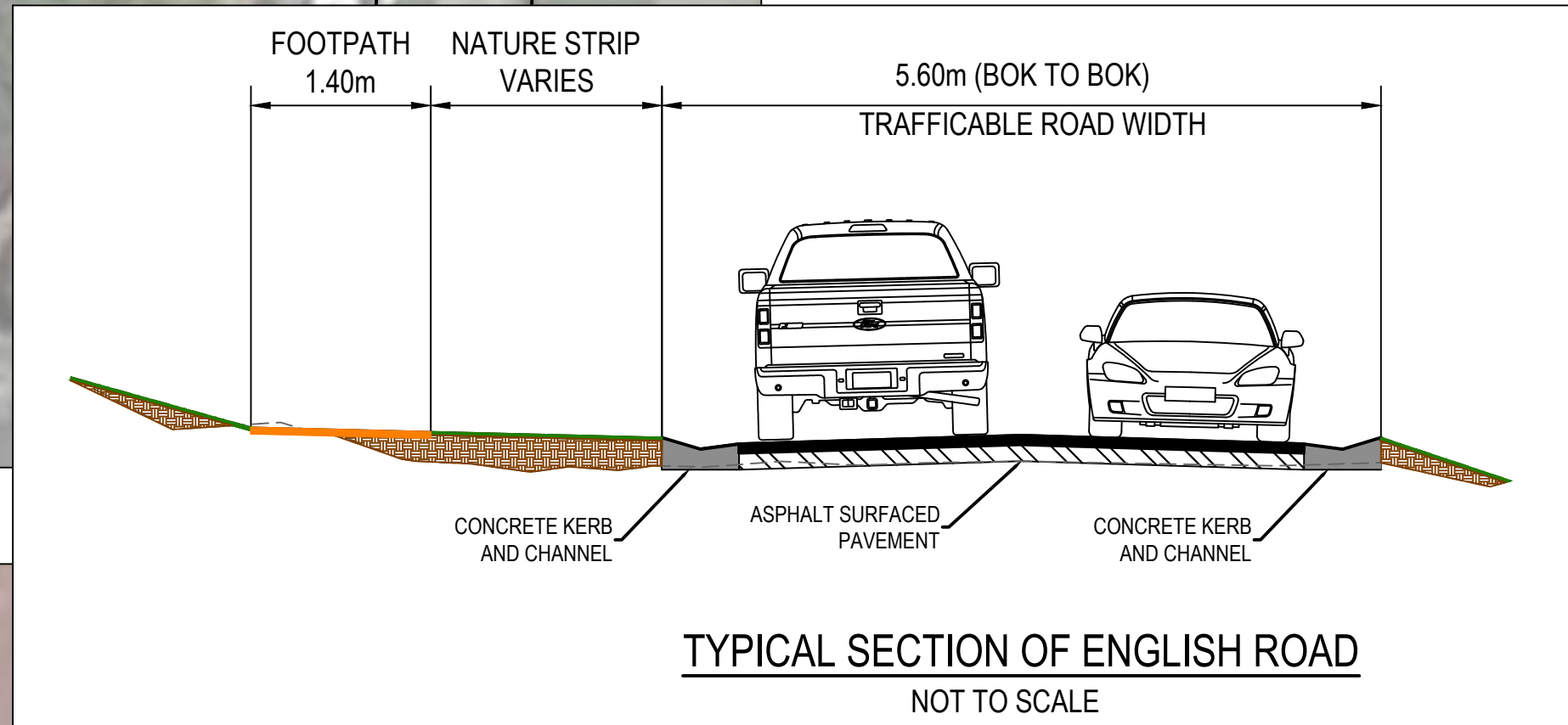
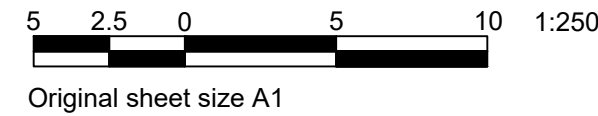
FOR CONTINUATION REFER ABOVE RIGHT

FOR CONTINUATION REFER TO SHEET C202



**LEGEND**

NEW PAVEMENT	NEW DRAIN PIPE
NEW KERB	EXISTING DRAIN PIPE
GRAVEL REGRADING	NEW PIT
BITUMEN REGRADING	EXISTING TREE TO BE REMOVED
CONCRETE DRIVEWAY	EXISTING POWER POLE
CRUSHED ROCK FOOTPATH	
CONCRETE FOOTPATH	
LINEMARKING	
EXISTING OVERHEAD CABLE	



DATE	REVISION	AUTHORISED	VER.
01.02.2022	COMMUNITY CONSULTATION	AC	00
03.02.2022	COUNCIL AMENDMENTS	AC	01

**CONSULTATION ISSUE (NOT FOR CONSTRUCTION)**

**WARNING**  
BEWARE - UNDERGROUND SERVICES  
THE LOCATIONS OF EXISTING UNDERGROUND SERVICES ARE APPROXIMATE ONLY AND THEIR EXACT DEPTH AND LOCATION SHOULD BE VERIFIED AND PROVEN ON SITE BY THE APPROPRIATE SERVICE PROVIDERS PRIOR TO ANY SITE EXCAVATION. NO GUARANTEE IS GIVEN THAT ALL EXISTING SERVICES ARE SHOWN. CONTRACTOR TO TAKE PRECAUTIONS TO AVOID CONFLICTS

[www.dialbeforeyoudig.com.au](http://www.dialbeforeyoudig.com.au)  
**DIAL 1100 BEFORE YOU DIG**

**JCA LAND CONSULTANTS**  
The Subdivision Specialists  
Suite 9, 303 Marcondah Highway, Ringwood VIC 3134  
Ph 03 8755 4888 | Email jca@jca.com.au | www.jca.com.au

Quality Management System ISO 9001  
trustmark.com.au

SCALES: AS SHOWN AT A1
SURVEY BY: JCA
PLAN BY: Z.GLUYAS (JCA)
CHECKED BY: A.CHARNOCK (JCA)
PROJECT ENGINEER: G.McCARTHY
DATE: 01.02.2022
CAD FILE: 26665_C2_CC.dwg

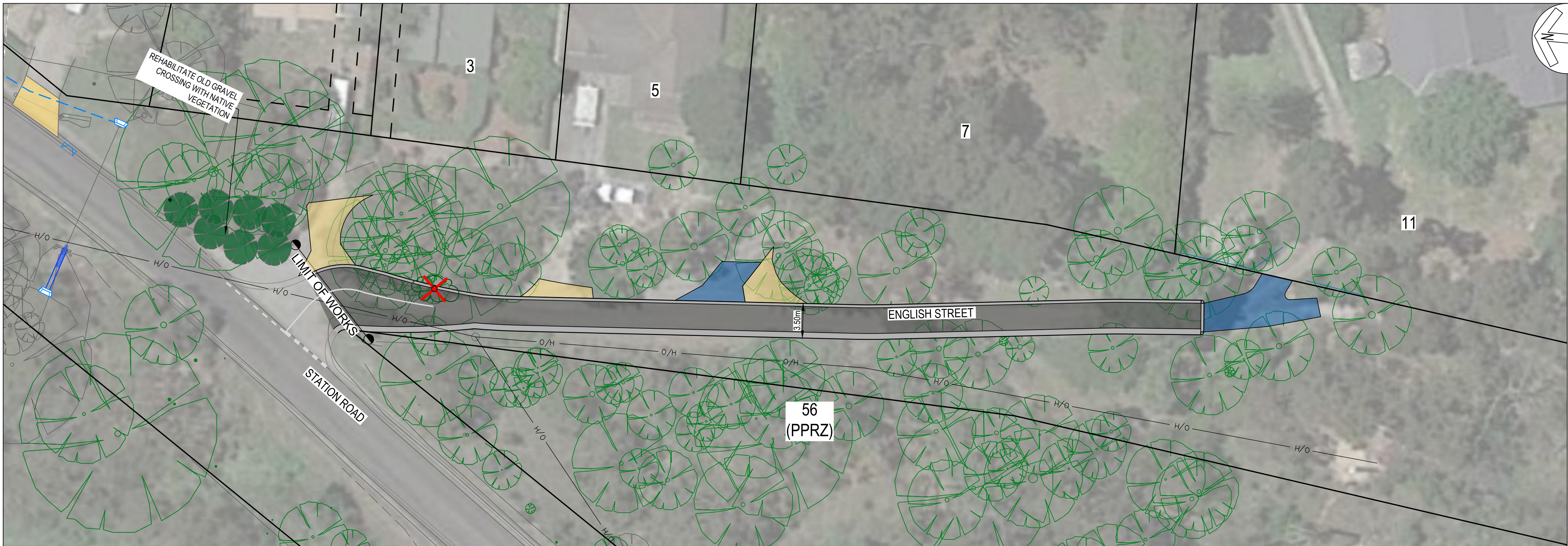
LEVEL DATUM A.H.D.
COORDINATE DATUM MGA

**YARRA RANGES COUNCIL**

**ROAD CONSTRUCTION**  
VICTORIA ROAD, RAILWAY ROAD, AND ENGLISH STREET  
SEVILLE  
DETAIL PLANS - No. 39 ENGLISH STREET -  
No. 76 ENGLISH STREET

CHECKED BY XX	SHEET NO. C207	VERSION 01
APPROVED XX MANAGER - INFRASTRUCTURE SERVICES	DRAWING NO. 26665_C2_CC.dwg JCA Ref: 26665	





LEGEND

NEW PAVEMENT

NEW KERB

GRAVEL REGRADING

BITUMEN REGRADING

CONCRETE DRIVEWAY

CRUSHED ROCK FOOTPATH

CONCRETE FOOTPATH

LINEMARKING

OH

EXISTING OVERHEAD CABLE

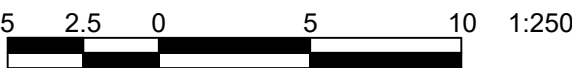
NEW DRAIN PIPE

EXISTING DRAIN PIPE

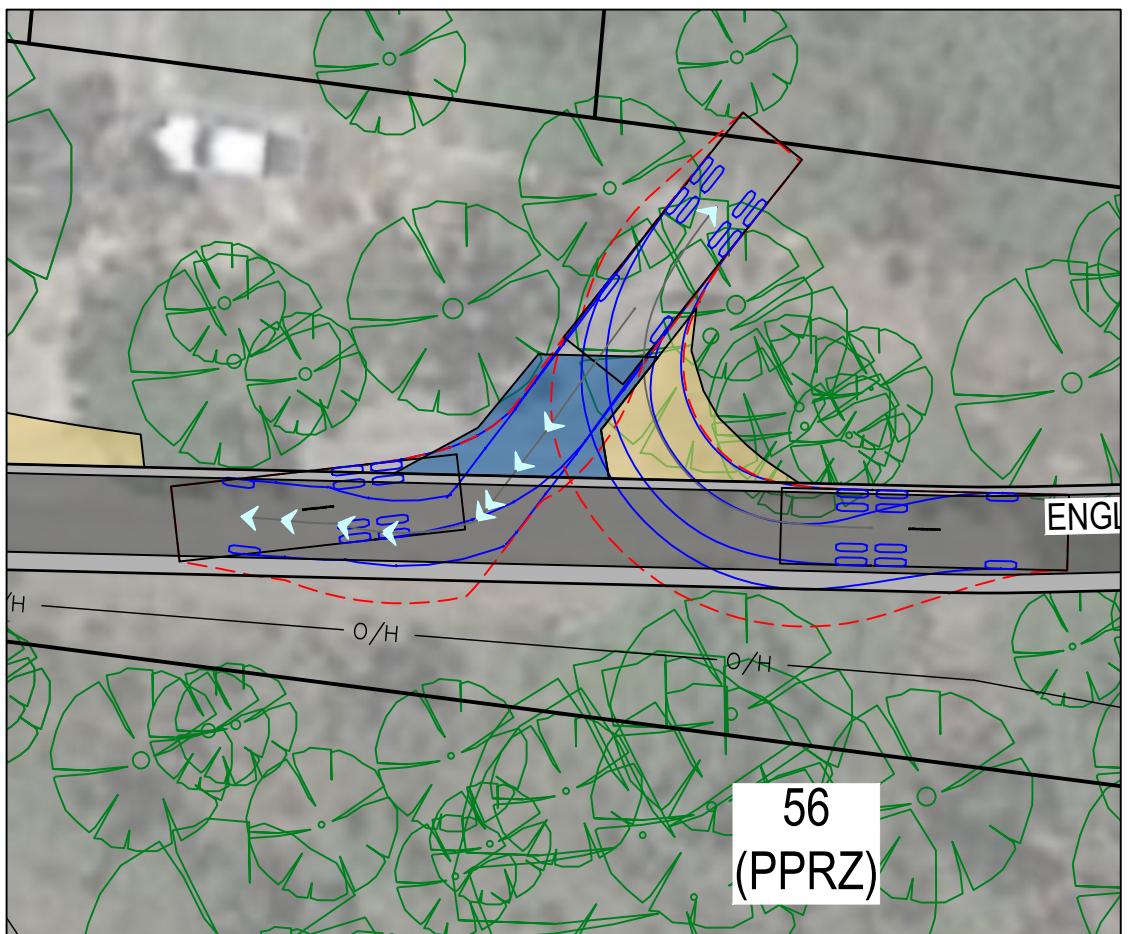
NEW PIT

EXISTING TREE TO BE REMOVED

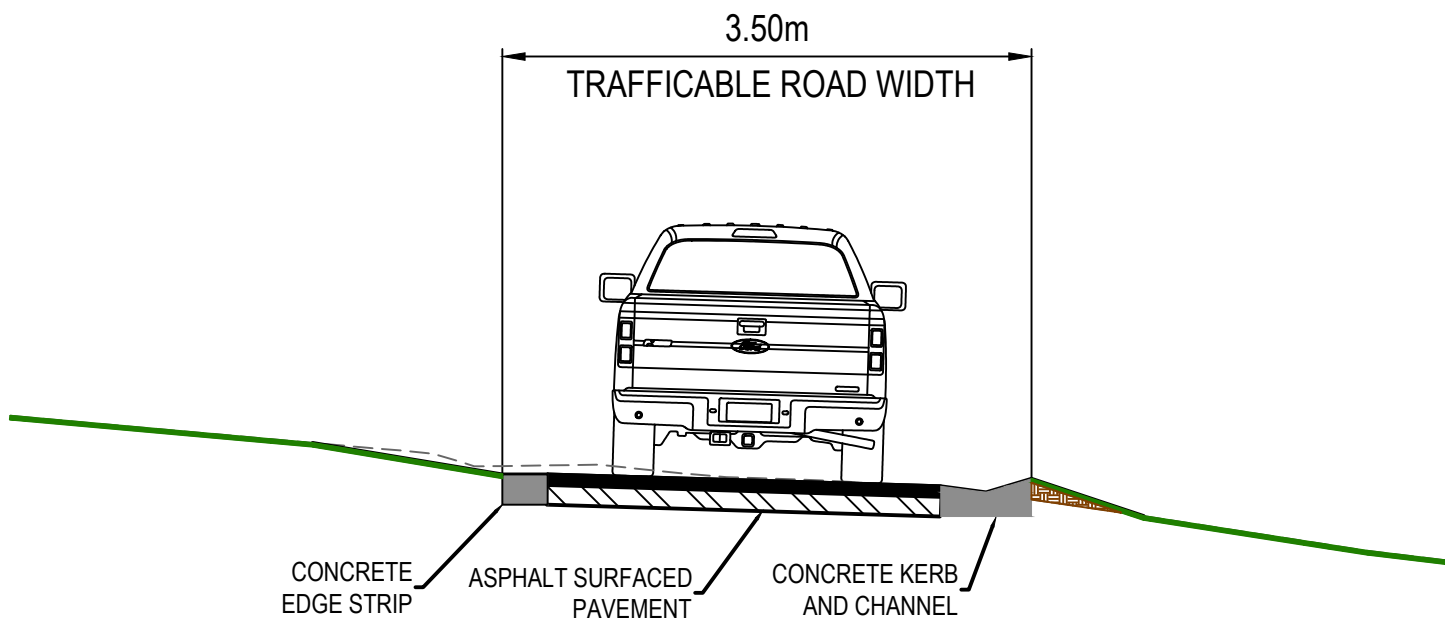
EXISTING POWER POLE



Original sheet size A1



WASTE COLLECTION TURNING PATH



TYPICAL SECTION OF ENGLISH STREET  
NOT TO SCALE

DATE	REVISION	AUTHORISED	VER.
01.02.2022	COMMUNITY CONSULTATION	AC	00
03.02.2022	COUNCIL AMENDMENTS	AC	01

PLAN STATUS: CONSULTATION ISSUE (NOT FOR CONSTRUCTION)

WARNING

BEWARE - UNDERGROUND SERVICES

THE LOCATIONS OF EXISTING UNDERGROUND SERVICES ARE APPROXIMATE ONLY AND THEIR EXACT DEPTH AND LOCATION SHOULD BE VERIFIED AND PROVEN ON SITE BY THE APPROPRIATE SERVICE PROVIDERS PRIOR TO ANY SITE EXCAVATION. NO GUARANTEE IS GIVEN THAT ALL EXISTING SERVICES ARE SHOWN. CONTRACTOR TO TAKE PRECAUTIONS TO AVOID CONFLICTS

www.dialbeforeyoudig.com.au

DIAL 1100  
BEFORE YOU DIG

JCA LAND CONSULTANTS

The Subdivision Specialists

Suite 9, 303 Marcondah Highway, Ringwood VIC 3134  
Ph 03 8755 4888 | [info@jca.com.au](mailto:info@jca.com.au) | [www.jca.com.au](http://www.jca.com.au)

Quality Management System ISO 9001

trustmark.com.au

SCALES: AS SHOWN AT A1
SURVEY BY: JCA
PLAN BY: Z.GLUYAS (JCA)
CHECKED BY: A.CHARNOCK (JCA)
PROJECT ENGINEER: G.McCARTHY
DATE: 01.02.2022
CAD FILE: 26665_C2_CC.dwg

LEVEL DATUM  
A.H.D.

COORDINATE DATUM  
MGA

YARRA RANGES COUNCIL

ROAD CONSTRUCTION  
VICTORIA ROAD, RAILWAY ROAD, AND ENGLISH STREET  
SEVILLE

DETAIL PLANS - No. 76 STATION ROAD -  
No. 11 ENGLISH STREET

CHECKED BY XX	SHEET NO. C208	VERSION 01
APPROVED XX MANAGER - INFRASTRUCTURE SERVICES	DRAWING NO. 26665_C2_CC.dwg JCA Ref: 26665	