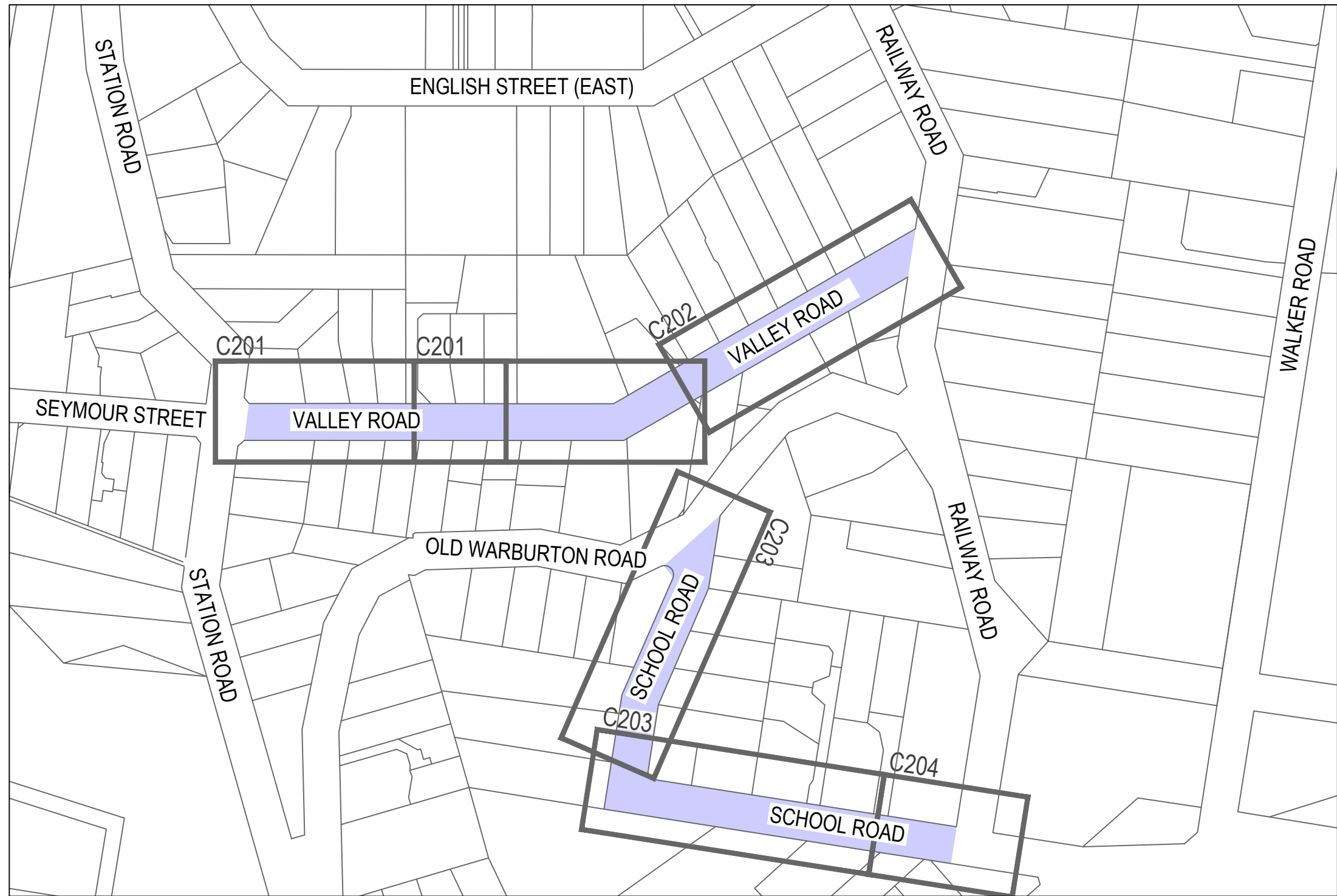
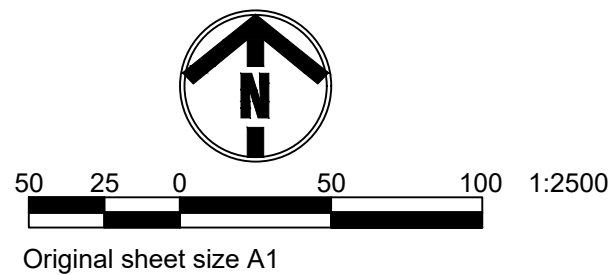


VALLEY ROAD AND SCHOOL ROAD, SEVILLE ROAD CONSTRUCTION WORKS



OVERALL PLAN



DRAWING INDEX	
SHEET NO.	TITLE
C101	OVERALL PLAN, DRAWING INDEX, AND NOTES
C201	DETAIL PLAN - No. 38 STATION ROAD - No. 19 VALLEY ROAD
C202	DETAIL PLAN - No. 21 VALLEY ROAD - No. 17 RAILWAY ROAD
C203	DETAIL PLAN - No. 52 OLD WARBURTON ROAD - No. 3 SCHOOL ROAD
C204	DETAIL PLAN - No. 10 SCHOOL ROAD - SEVILLE PRIMARY SCHOOL

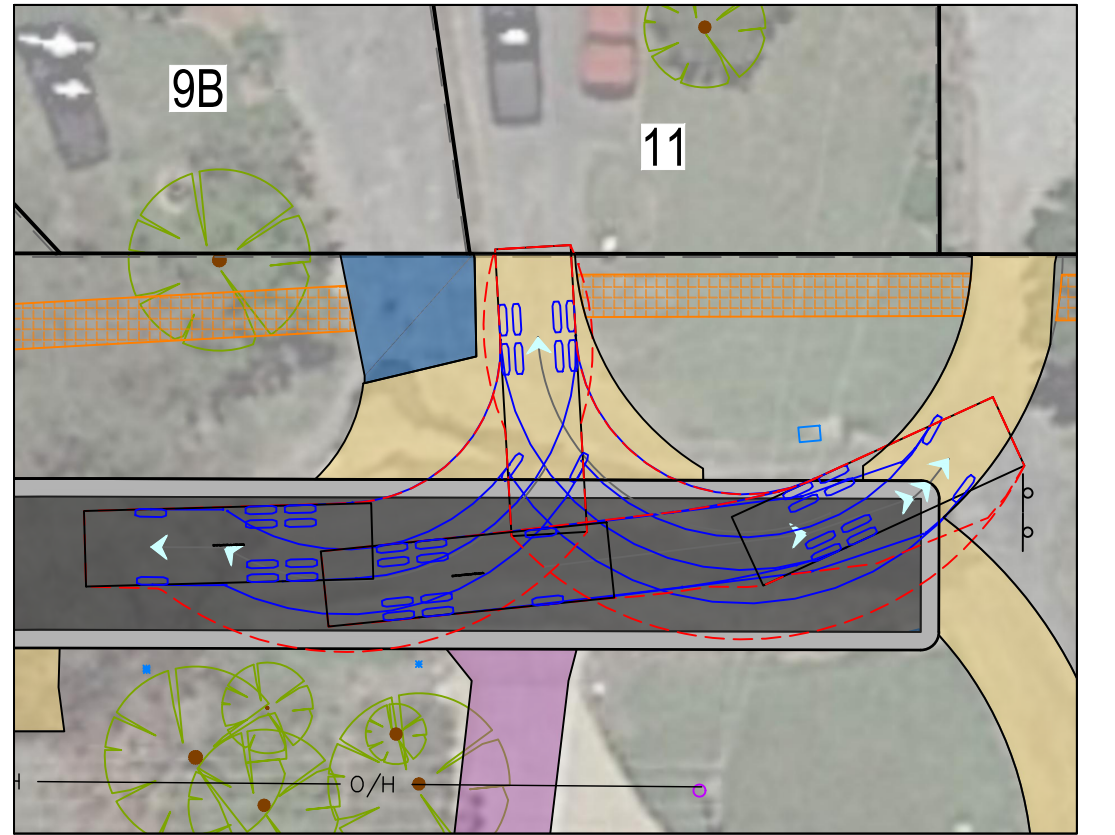
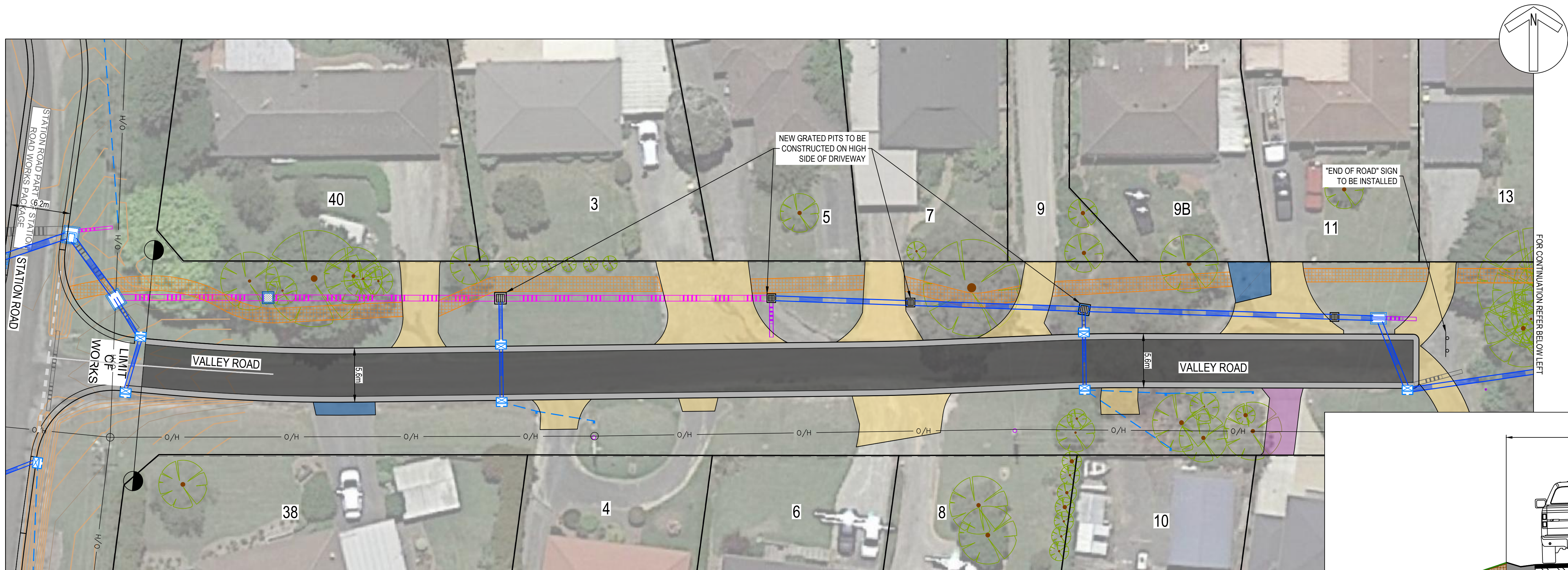


PROJECT SUMMARY

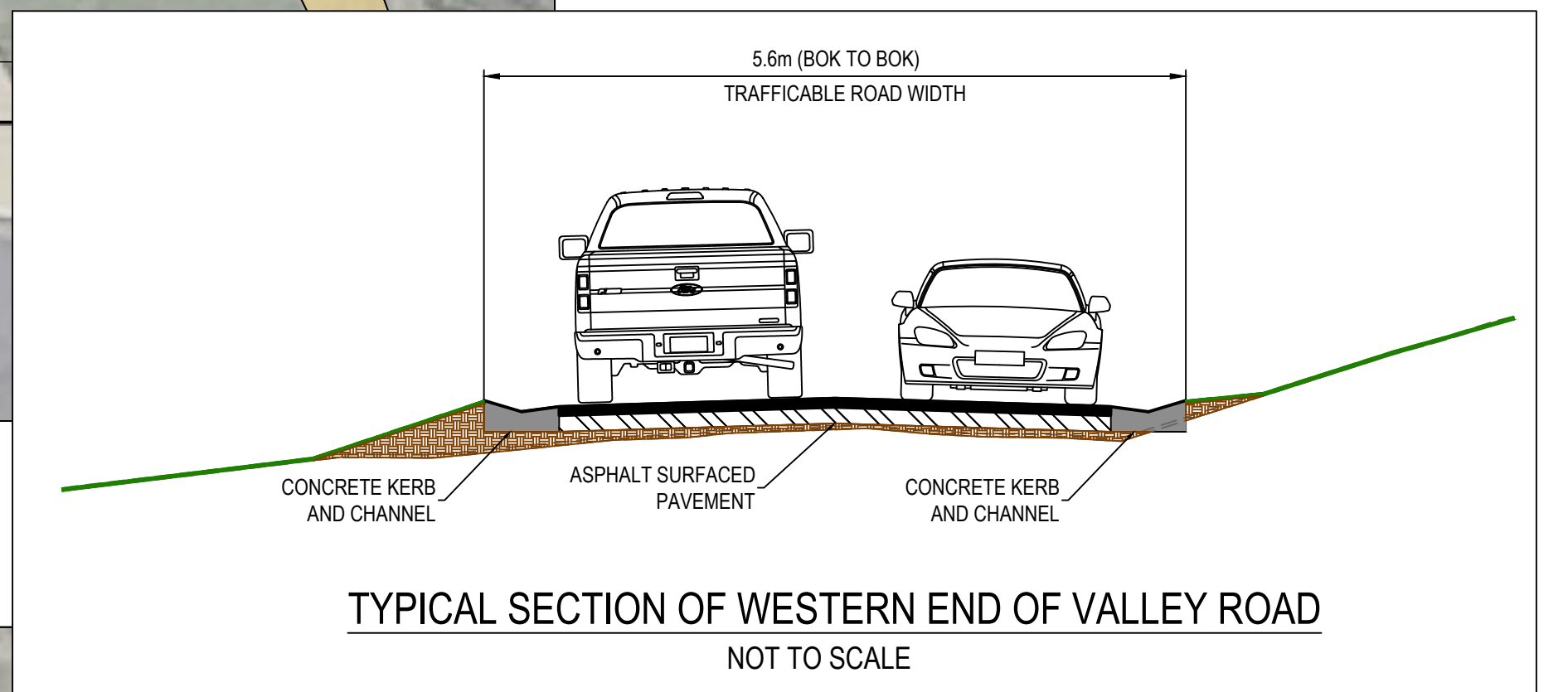
WORKS TO INCLUDE:

- PAVEMENT AND KERB CONSTRUCTION ON VALLEY ROAD AND SCHOOL ROAD
- NARROW SECTIONS ALONG VALLEY ROAD TO IMPROVE DRIVEWAY ACCESS AND PROTECT NATIVE VEGETATION
- ADDITIONAL UNDERGROUND DRAINAGE TO BE INSTALLED. REDUNDANT CULVERTS UNDER DRIVEWAYS TO BE REMOVED
- GRAVEL FOOTPATH ALONG VALLEY ROAD TO BE CONSTRUCTED

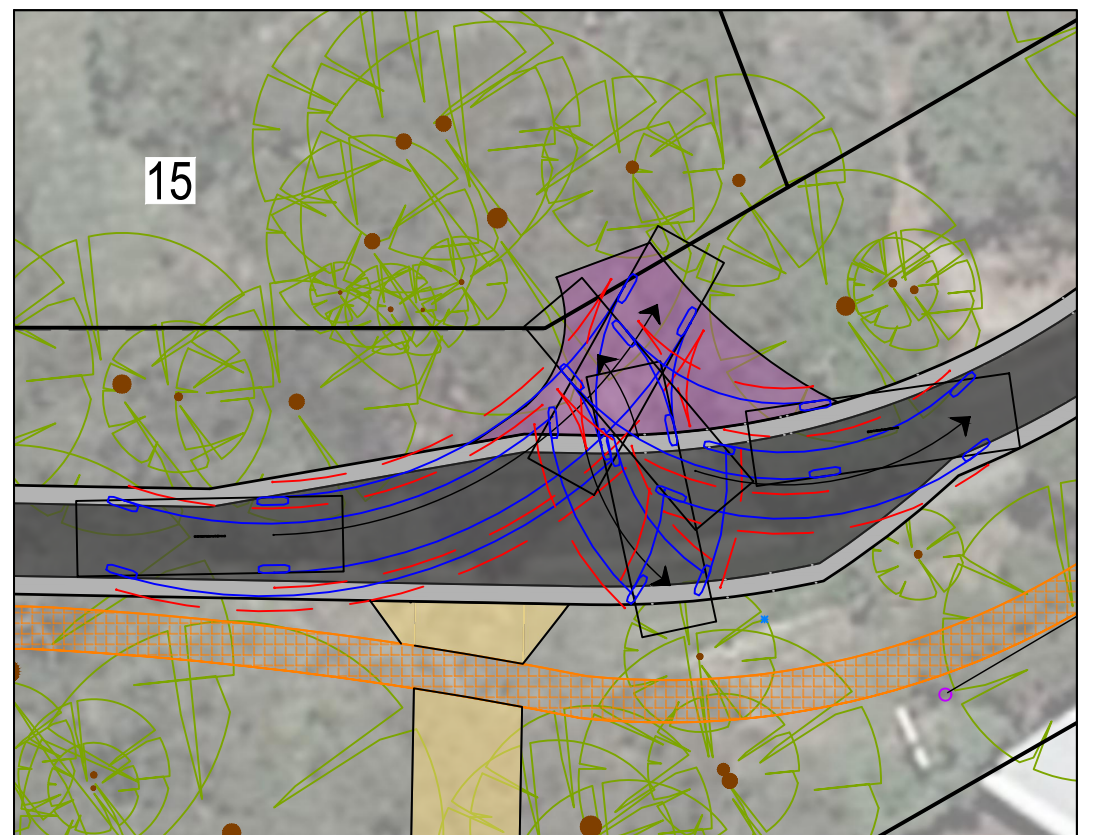
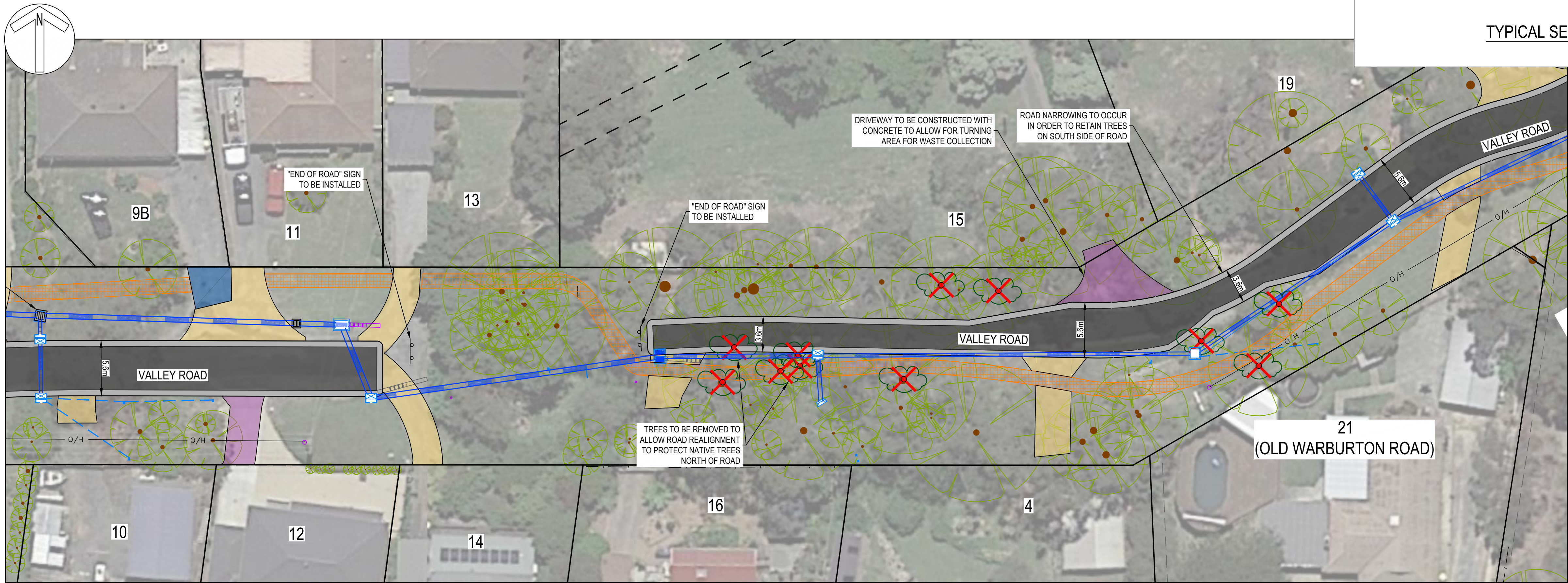
DATE	REVISION	AUTHORISED	VER.	PLAN STATUS:	SCALES:	LEVEL DATUM	COORDINATE DATUM	CHECKED BY	SHEET NO.	VERSION
01.02.22	COMMUNITY CONSULTATION	AC	00	<div>CONSULTATION ISSUE (NOT FOR CONSTRUCTION)</div> <div><div><div>WARNING</div><div>BEWARE - UNDERGROUND SERVICES</div><div>THE LOCATIONS OF EXISTING UNDERGROUND SERVICES ARE APPROXIMATE ONLY AND THEIR EXACT DEPTH AND LOCATION SHOULD BE VERIFIED AND PROVEN ON SITE BY THE APPROPRIATE SERVICE PROVIDERS PRIOR TO ANY SITE EXCAVATION. NO GUARANTEE IS GIVEN THAT ALL EXISTING SERVICES ARE SHOWN. CONTRACTOR TO TAKE PRECAUTIONS TO AVOID CONFLICTS</div></div><div><div>www.dialbeforeyoudig.com.au</div><div></div><div><div>JCA LAND CONSULTANTS</div><div>The Subdivision Specialists</div><div><small>Suite 9, 303 Marcondah Highway, Ringwood VIC 3134 Ph 03 8755 4888 info@jca.com.au www.jca.com.au</small></div><div></div></div></div></div>	AS SHOWN AT A1	A.H.D.	Yarra Ranges Council	XX	C101	01
04.02.22	COUNCIL AMENDMENTS	AC	01		SURVEY BY: JCA			APPROVED		DRAWING NO.
					PLAN BY: Z.GLUYAS (JCA)			XX		XXXX-XXX
					CHECKED BY: A.CHARNOCK (JCA)			MANAGER - INFRASTRUCTURE SERVICES		JCA Ref: 26666
					PROJECT ENGINEER: G.McCARTHY					
					DATE: 01.02.2022					
					CAD FILE: 26666_C1_CC.dwg					



WASTE COLLECTION TURNING PATH
No.9B/11 VALLEY ROAD

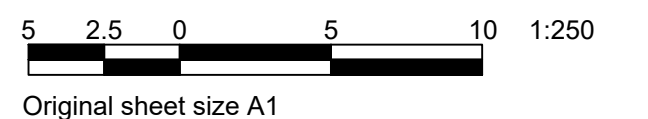




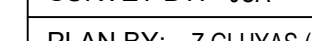

TYPICAL SECTION OF WESTERN END OF VALLEY ROAD
NOT TO SCALE

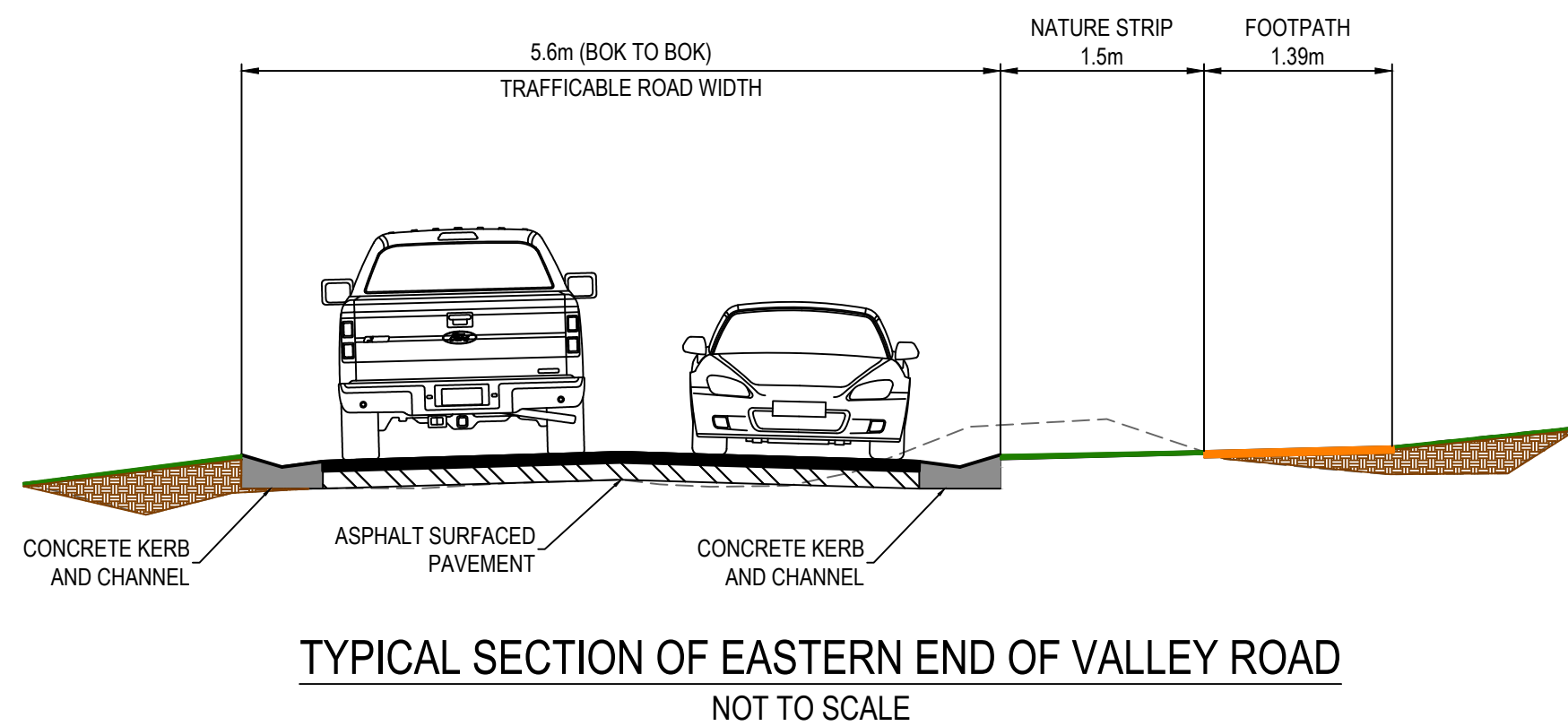
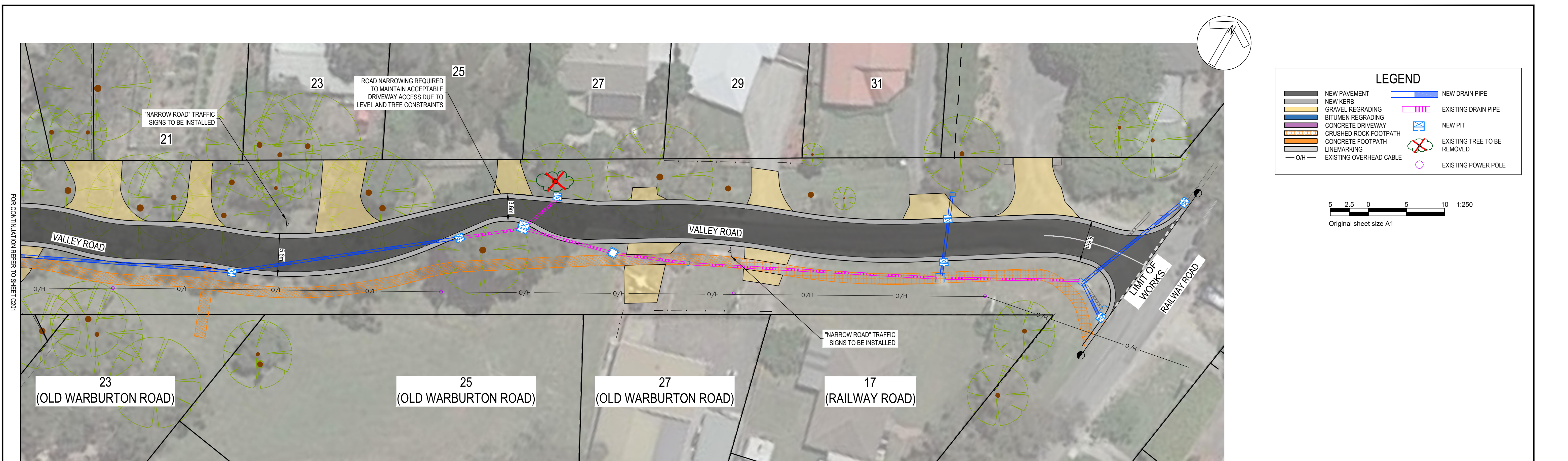


WASTE COLLECTION TURNING PATH
No. 15 VALLEY ROAD

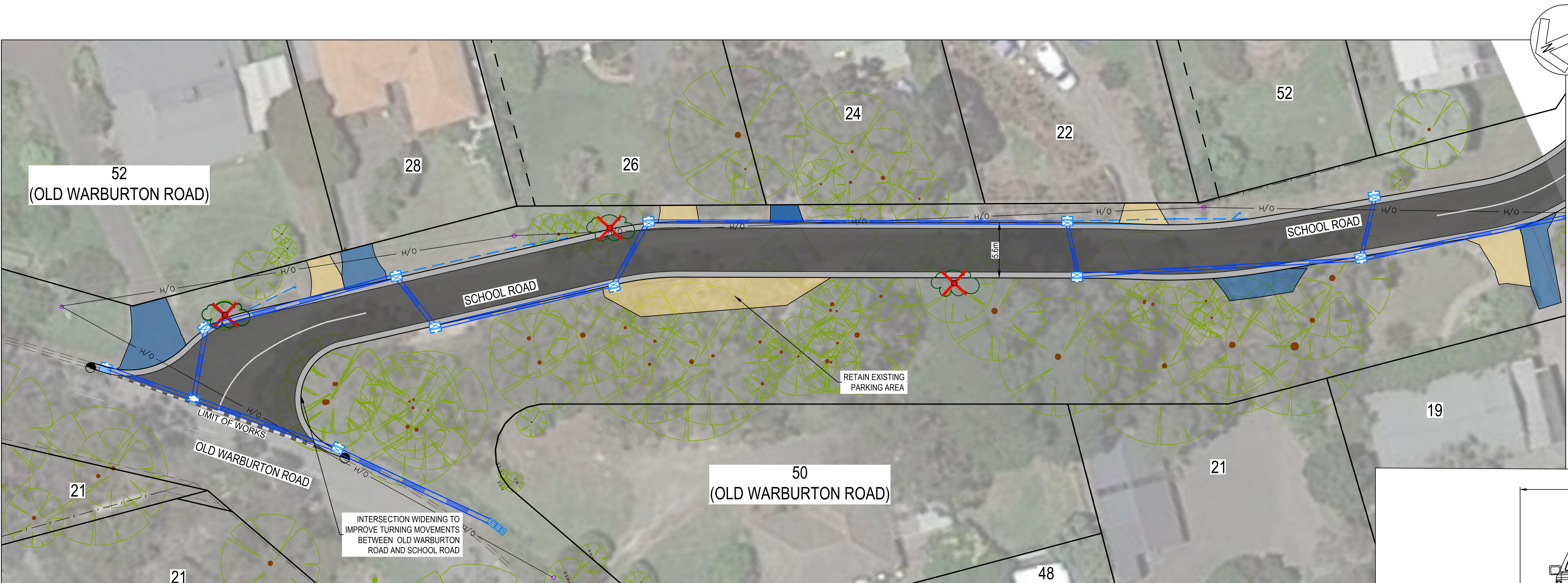
LEGEND	
	NEW PAVEMENT
	NEW KERB
	GRAVEL REGRAING
	BITUMEN REGRAING
	CONCRETE DRIVEWAY
	CRUSHED ROCK FOOTPATH
	CONCRETE FOOTPATH
	LINEMARKING
	EXISTING OVERHEAD CABLE
	NEW DRAIN PIPE
	EXISTING DRAIN PIPE
	NEW PIT
	EXISTING TREE TO BE REMOVED
	EXISTING POWER POLE



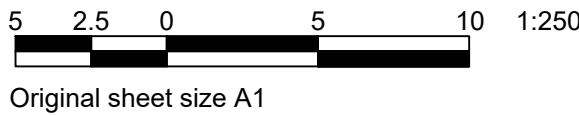
DATE		REVISION		AUTHORISED	VER.	PLAN STATUS:	CONSULTATION ISSUE (NOT FOR CONSTRUCTION)				SCALES:				YARRA RANGES COUNCIL				CHECKED BY	SHEET NO.	VERSION																																																																																																																																																																																																																																																																																																																																																																																																																																																																																																																																																																																																																																																																																																																																																																																																																																																																																																																																																																																																																																																																																																																																																																																																																																																																																																									
01.02.2022		COMMUNITY CONSULTATION		AC	00		<div><div>WARNING</div><div>BEWARE - UNDERGROUND SERVICES</div><div>THE LOCATIONS OF EXISTING UNDERGROUND SERVICES ARE APPROXIMATE ONLY AND THEIR EXACT DEPTH AND LOCATION SHOULD BE VERIFIED AND PROVEN ON SITE BY THE APPROPRIATE SERVICE PROVIDERS PRIOR TO ANY SITE EXCAVATION. NO GUARANTEE IS GIVEN THAT ALL EXISTING SERVICES ARE SHOWN. CONTRACTOR TO TAKE PRECAUTIONS TO AVOID CONFLICTS</div></div>	<div><div>www.dialbeforeyoudig.com.au</div><div></div></div>		<div><div></div><div><div>JCA LAND CONSULTANTS</div><div>The Subdivision Specialists</div><div><div>Suite 9, 303 Marcondan Highway, Ripswood VIC 3134</div><div>T: 03 9025 4444 E: info@jca.com.au www.jca.com.au</div></div></div></div>		<div><div></div><div><div>Quality Management System</div><div>ISO 9001:2015</div><div>trustmark.com.au</div></div></div>		LEVEL DATUM		<div></div>		CHECKED BY		C201		01																																																																																																																																																																																																																																																																																																																																																																																																																																																																																																																																																																																																																																																																																																																																																																																																																																																																																																																																																																																																																																																																																																																																																																																																																																																																																																								
04.02.2022		COUNCIL AMENDMENTS		AC	01								SURVEY BY: JCA		PLAN BY: Z. GLUYAS (JCA)			CHECKED BY: A. CHARNOCK (JCA)		PROJECT ENGINEER: G. MCARTHY		DATE: 01.02.2022		CAD FILE: 26666_C2_CC.dwg		COORDINATE DATUM		MGA		ROAD CONSTRUCTION		VALLEY ROAD AND SCHOOL ROAD		SEVILLE		DETAIL PLANS - VALLEY ROAD		No. 38 STATION ROAD - No. 19 VALLEY ROAD		APPROVED		XXXX-XXX		DRAWING NO.		JCA Ref: 26666																																																																																																																																																																																																																																																																																																																																																																																																																																																																																																																																																																																																																																																																																																																																																																																																																																																																																																																																																																																																																																																																																																																																																																																																																																																																																



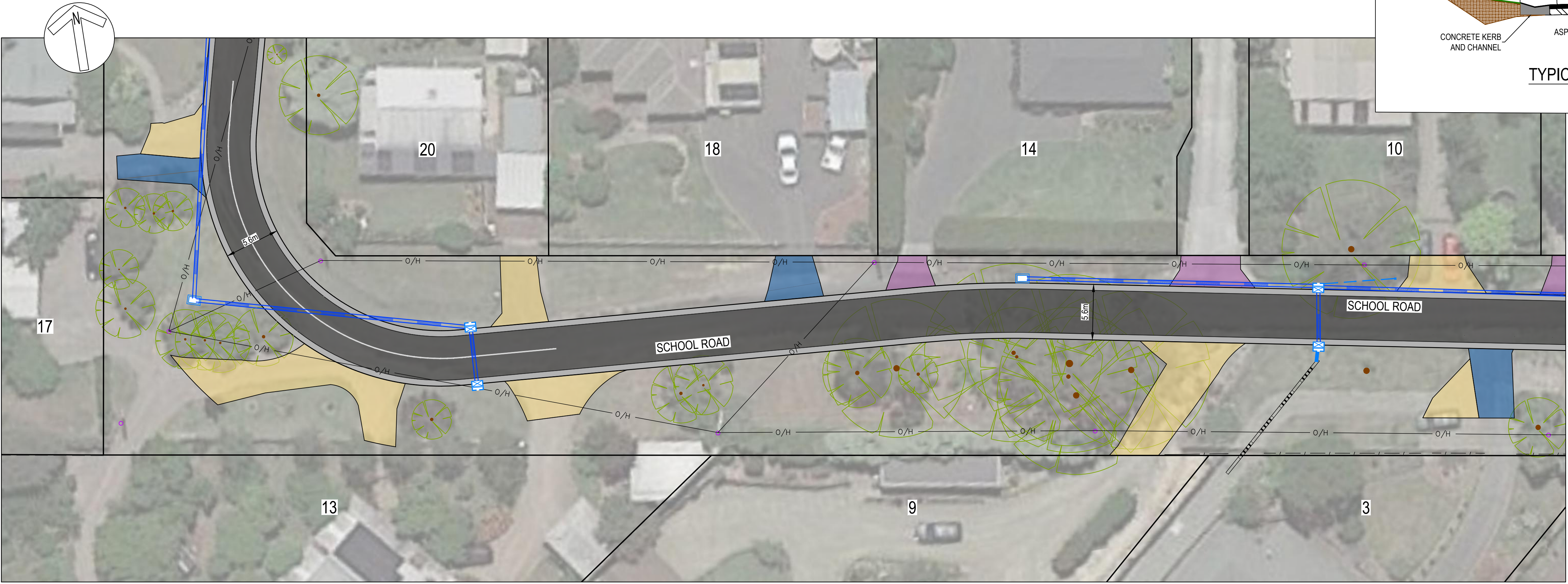
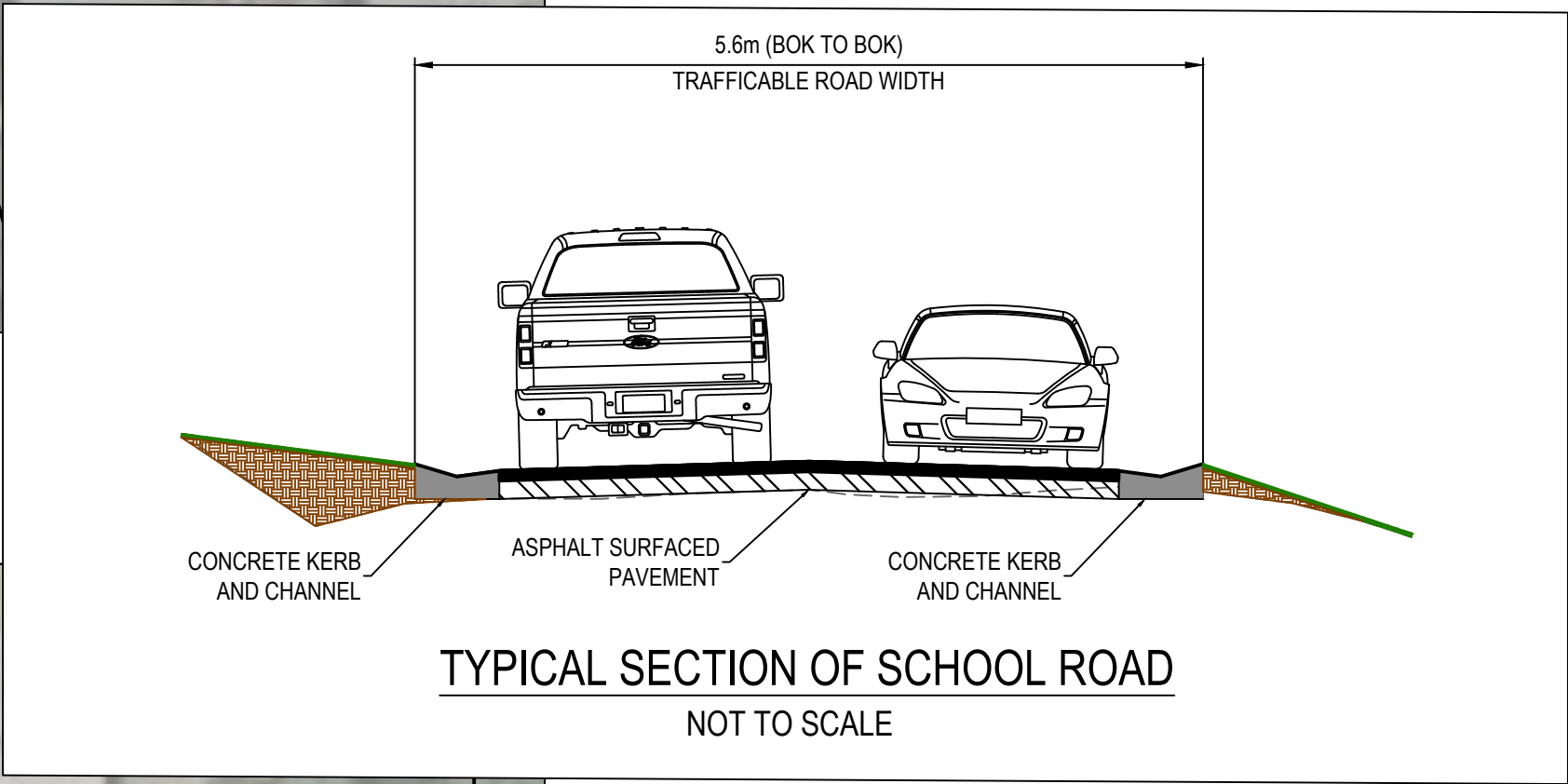
DATE	REVISION	AUTHORISED	VER.	PLAN STATUS:	SCALES:	LEVEL	COORDINATE	YARRA RANGES COUNCIL																																																																																																																																																																																																																																																																																																																																																																																																																																																																																																																																																																																																																																																																																																																																																																																																																																																																																																																																																																																																																																																																																																																																																																																																																																																																																																																																																																																																										
01.02.2022	COMMUNITY CONSULTATION	AC	00	<div><div><div>WARNING</div><div>BEWARE - UNDERGROUND SERVICES</div><div>THE LOCATIONS OF EXISTING UNDERGROUND SERVICES ARE APPROXIMATE ONLY AND THEIR EXACT DEPTH AND LOCATION SHOULD BE VERIFIED AND PROVEN ON SITE BY THE APPROPRIATE SERVICE PROVIDERS PRIOR TO ANY SITE EXCAVATION. NO GUARANTEE IS GIVEN THAT ALL EXISTING SERVICES ARE SHOWN. CONTRACTOR TO TAKE PRECAUTIONS TO AVOID CONFLICTS</div></div><div><div>www.dialbeforeyoudig.com.au</div><div></div></div><div><div>JCA LAND CONSULTANTS The Subdivision Specialists <small>Suite 9, 303 Marcondah Highway, Ringwood VIC 3134 Ph 03 8755 4888 info@jca.com.au www.jca.com.au</small></div><div> <small>ISO 9001 trustmark.com.au</small></div></div></div>	AS SHOWN AT A1	SURVEY BY: JCA	COORINATE DATUM		ROAD CONSTRUCTION VALLEY ROAD AND SCHOOL ROAD SEVILLE DETAIL PLANS - VALLEY ROAD No.21 VALLEY ROAD - No. 17 RAILWAY ROAD	CHECKED BY	SHEET NO.	VERSION																																																																																																																																																																																																																																																																																																																																																																																																																																																																																																																																																																																																																																																																																																																																																																																																																																																																																																																																																																																																																																																																																																																																																																																																																																																																																																																																																																																																						
04.02.2022	COUNCIL AMENDMENTS	AC	01		PLAN BY: Z.GLUYAS (JCA)	A.H.D.	XX			C202	01																																																																																																																																																																																																																																																																																																																																																																																																																																																																																																																																																																																																																																																																																																																																																																																																																																																																																																																																																																																																																																																																																																																																																																																																																																																																																																																																																																																																							
					CHECKED BY: A.CHARNOCK (JCA)																																																																																																																																																																																																																																																																																																																																																																																																																																																																																																																																																																																																																																																																																																																																																																																																																																																																																																																																																																																																																																																																																																																																																																																																																																																																																																																																																																																																													
					PROJECT ENGINEER: G.McCARTHY																																																																																																																																																																																																																																																																																																																																																																																																																																																																																																																																																																																																																																																																																																																																																																																																																																																																																																																																																																																																																																																																																																																																																																																																																																																																																																																																																																																																													
				DATE: 01.02.2022																																																																																																																																																																																																																																																																																																																																																																																																																																																																																																																																																																																																																																																																																																																																																																																																																																																																																																																																																																																																																																																																																																																																																																																																																																																																																																																																																																																																														



LEGEND			
	NEW PAVEMENT		NEW DRAIN PIPE
	NEW KERB		EXISTING DRAIN PIPE
	GRAVEL REGRADING		NEW PIT
	BITUMEN REGRADING		EXISTING TREE TO BE REMOVED
	CONCRETE DRIVEWAY		EXISTING POWER POLE
	CRUSHED ROCK FOOTPATH		
	CONCRETE FOOTPATH		
	LINE MARKING		
	EXISTING OVERHEAD CABLE		

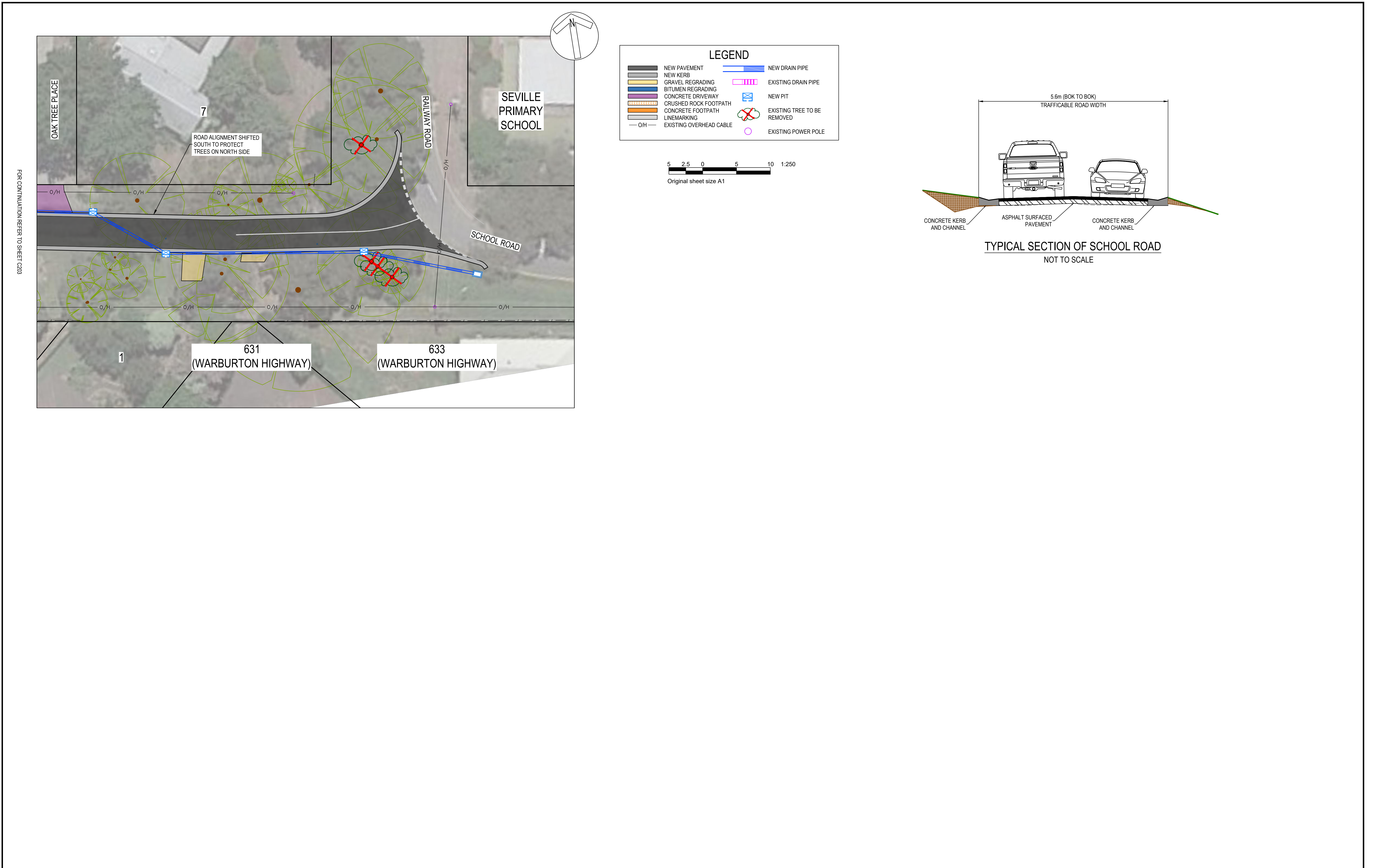


FOR CONTINUATION REFER BELOW LEFT



FOR CONTINUATION REFER ABOVE RIGHT

DATE	REVISION	AUTHORISED	VER.	PLAN STATUS:	SCALES:	LEVEL DATUM	COORDINATE DATUM	YARRA RANGES COUNCIL			
01.02.2022	COMMUNITY CONSULTATION	AC	00	CONSULTATION ISSUE (NOT FOR CONSTRUCTION)	AS SHOWN AT A1	A.H.D.	MGA	ROAD CONSTRUCTION VALLEY ROAD AND SCHOOL ROAD SEVILLE DETAIL PLANS - SCHOOL ROAD No. 52 OLD WARBURTON ROAD - No. 3 SCHOOL ROAD			
04.02.2022	COUNCIL AMENDMENTS	AC	01								
				WARNING BEWARE - UNDERGROUND SERVICES THE LOCATIONS OF EXISTING UNDERGROUND SERVICES ARE APPROXIMATE ONLY AND THEIR EXACT DEPTH AND LOCATION SHOULD BE VERIFIED AND PROVEN ON SITE BY THE APPROPRIATE SERVICE PROVIDERS PRIOR TO ANY SITE EXCAVATION. NO GUARANTEE IS GIVEN THAT ALL EXISTING SERVICES ARE SHOWN. CONTRACTOR TO TAKE PRECAUTIONS TO AVOID CONFLICTS				CHECKED BY XX APPROVED XX MANAGER - INFRASTRUCTURE SERVICES			
								SHEET NO. C203 DRAWING NO. XXXX-XXX JCA Ref: 26666			
								VERSION 01			



DATE		REVISION	AUTHORISED	VER.	PLAN STATUS: CONSULTATION ISSUE (NOT FOR CONSTRUCTION)				SCALES: AS SHOWN AT A1		YARRA RANGES COUNCIL					
01.02.2022		COMMUNITY CONSULTATION	AC	00	<div><div>WARNING</div><div>BEWARE - UNDERGROUND SERVICES</div><div>THE LOCATIONS OF EXISTING UNDERGROUND SERVICES ARE APPROXIMATE ONLY AND THEIR EXACT DEPTH AND LOCATION SHOULD BE VERIFIED AND PROVEN ON SITE BY THE APPROPRIATE SERVICE PROVIDERS PRIOR TO ANY SITE EXCAVATION. NO GUARANTEE IS GIVEN THAT ALL EXISTING SERVICES ARE SHOWN. CONTRACTOR TO TAKE PRECAUTIONS TO AVOID CONFLICTS</div></div> <div><div>www.dialbeforeyoudig.com.au</div><div><div><div></div><div>DIAL 1100</div><div>BEFORE YOU DIG</div></div></div><div><div>JCA LAND CONSULTANTS</div><div>The Subdivision Specialists</div><div><div>Suite 9, 303 Marcondah Highway, Ringwood VIC 3114</div><div>Ph 03 8755 4888</div><div>82 prajapati.com.au</div><div>www.jca.com.au</div></div><div><div>Quality Management System</div><div>ISO 9001</div><div>trustmark.com.au</div></div></div><div><div>SURVEY BY:</div><div>JCA</div></div><div><div>PLAN BY:</div><div>Z.GLUYAS (JCA)</div></div><div><div>CHECKED BY:</div><div>A.CHARNOCK (JCA)</div></div><div><div>PROJECT ENGINEER:</div><div>G.McCARTHY</div></div><div><div>DATE:</div><div>01.02.2022</div></div><div><div>CAD FILE:</div><div>26666_C2_CC.dwg</div></div><div><div>LEVEL DATUM</div><div>A.H.D.</div></div><div><div>COORDINATE DATUM</div><div>MGA</div></div><div><div>Yarra Ranges Council</div></div><div><div>CHECKED BY</div><div>XX</div></div><div><div>APPROVED</div><div>XX</div></div><div><div>MANAGER - INFRASTRUCTURE SERVICES</div></div><div><div>SHEET NO.</div><div>C204</div></div><div><div>VERSION</div><div>01</div></div><div><div>DRAWING NO.</div><div>XXXX-XXX</div></div><div><div>JCA Ref:</div><div>26666</div></div></div>											
04.02.2022		COUNCIL AMENDMENTS	AC	01												